

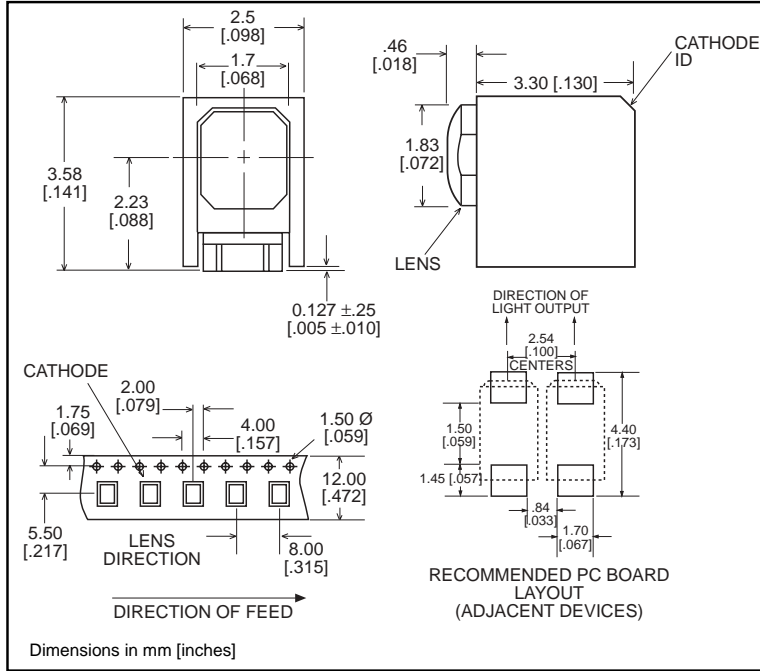
2mm

# Prism® CBI® Circuit Board Indicator Surface Mount LED



## 595-2x01-0xx

1



### Part

### Number\*

### Type

595-2101-0xx	AlGaAs Red	← <b>NEW</b>
595-2201-0xx	High Intensity Green	
595-2301-0xx	High Performance Green	
595-2401-0xx	High Performance Yellow	← <b>NEW</b>
595-2701-0xx	AlInGaP Yellow	

### Features

- Helps to eliminate mixed technology PC boards.
- Unique patented low part count design.
- Compatible with automatic placement equipment.
- Compatible with infrared and vapor phase solder processes.
- Packaged on 12mm tape, 7" or 13" reels per EIA-481-1.
- Black housing enhances contrast ratio.
- 2 mm LED size saves space, allows .100" spacing.
- Housing material meets UL94V-0 flammability rating.
- Lens material meets UL94-HB flammability rating.
- Uses LEDs designed specifically for surface mounting.

U.S. Patent RE 34,254; foreign patents pending

### \* ORDERING INFORMATION

## 595-2x01-0xx

packaging option

02	20 pieces on tape
07	7" reel, 600 pcs/reel
13	13" reel, 2300 pcs/reel