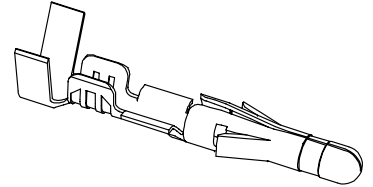
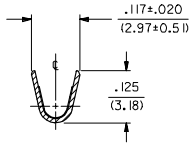
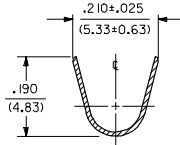
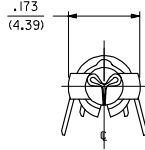
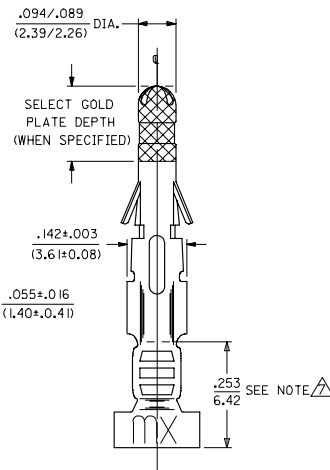
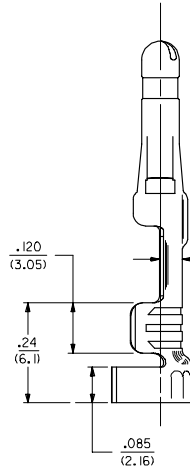
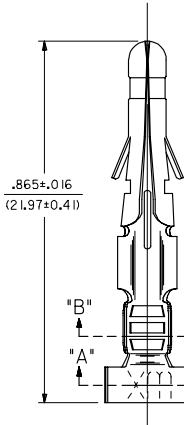


PART NO.	ENG. NO.
02-09-2103	1190-(P901)L
02-09-2101	1190-(P901)
02-09-6110	1190-(591)L
02-09-6101	1190-(591)
02-09-6106	1190-(550)L
02-09-6100	1190-(550)



SECT. "A-A"

SECT. "B-B"

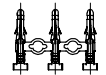


NOTES:

- MATERIAL:
CARTRIDGE BRASS
 - FINISH CODES:
901 HOT TIN DIP .000020/(0.00051) MIN.
591 SELECT GOLD PLATE .000050/(0.00127) MIN. IN CONTACT AREA,
OVER .000050/(0.00127) MIN. NICKEL OVERALL
WITH .000010/(0.00025) MAX. GOLD FLASH OVERALL.
550 SELECT GOLD PLATE .000015/(0.00038) MIN. IN CONTACT AREA,
OVER .000030/(0.00076) MIN. NICKEL OVERALL
WITH .000010/(0.00025) MAX. GOLD FLASH OVERALL.
 - PRODUCT SPECIFICATION: PS-43660-9999
 - TERMINAL FOR USE WITH .093/(2.36) SERIES HOUSINGS AND WILL
ACCEPT 14 THRU 20 AWG WIRE.
 - INSERTION FORCE: 3.5 LBS. MAX. WHEN TERMINAL IS INSERTED
INTO .093 SERIES HOUSING.
 - RETENTION: 20 LBS. MIN. FROM HOUSING.
- △ DIMENSION FROM THE END OF THE TERMINAL TO THE END OF THE BRUSH
ON THE WIRE CRIMPED INTO THE TERMINAL.

LEGEND

1190-(****)*
 P=PREPLATE BLANK=POSTPLATE
 FORM
 BLANK=CHAIN
 L=LOOSE
 FINISH CODE



CHAIN FORM
FULL SCALE

LEAD FREE UPDATE LEC NO: UCP2005-2754 DRAWN: JONE 2005/06/24 CHECKED: RAS 2005/06/24 APPROVED: SMITH 2005/06/24 REV DESCRIPTION	QUALITY SYMBOLS	GENERAL TOLERANCES (UNLESS SPECIFIED)	DIMENSION STYLE	SCALE	DESIGN UNITS	THIRD ANGLE PROJECTION
	▽=0	4 PLACES ± --- ± ---	IN/MM	6:1	INCH	
	▽=0	3 PLACES ± .25 ± .10	DRAWN BY	DATE	TITLE	
		2 PLACES ± .13 ± .04	SEP 10/26/87	DATE	CRIMP TERMINAL, MALE	
	1 PLACE ± 0.13 ± ---	1 PLACE ± 0.13 ± ---	CHECKED BY	DATE	.093/(2.36) DIA.	
	ANGULAR ±1/2°	ANGULAR ±1/2°	RW 10/26/87	DATE	FOR 14 THRU 20 AWG. WIRE	
			APPROVED BY	DATE	Molex MOLEX INCORPORATED	
			RAS 10/26/87	DATE		
			MATERIAL NO.	DOCUMENT NO.	SD-1190-*	SHEET NO.
			SEE CHART			1 OF 1
			SIZE C	THIS DRAWING CONTAINS INFORMATION THAT IS PROPRIETARY TO MOLEX INCORPORATED AND SHOULD NOT BE USED WITHOUT WRITTEN PERMISSION		