

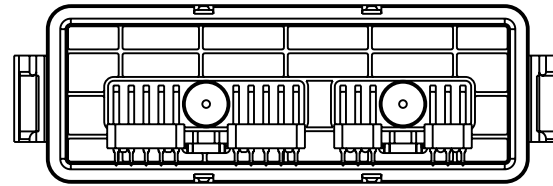
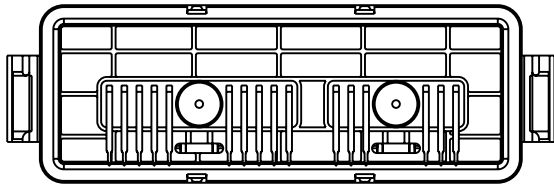
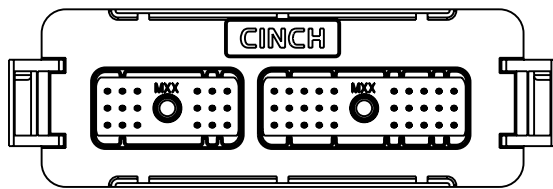
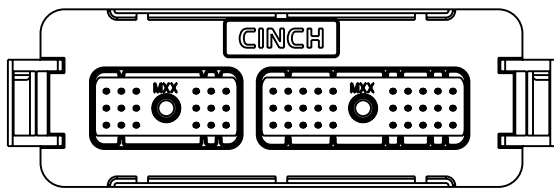
CINCH PART NUMBER MATRIX

P/N: 581 01 48 005

P/N: 581 01 48 007

48-WAY HEADER ASSEMBLY WITH OUT FERRITE FILTERS

48-WAY HEADER ASSEMBLY WITH FERRITE FILTERS



MATES WITH CINCH HARNESS CONNECTORS P/N:
581 01 18 023 (18-WAY) AND 581 01 30 029 (30-WAY)

NOTES:

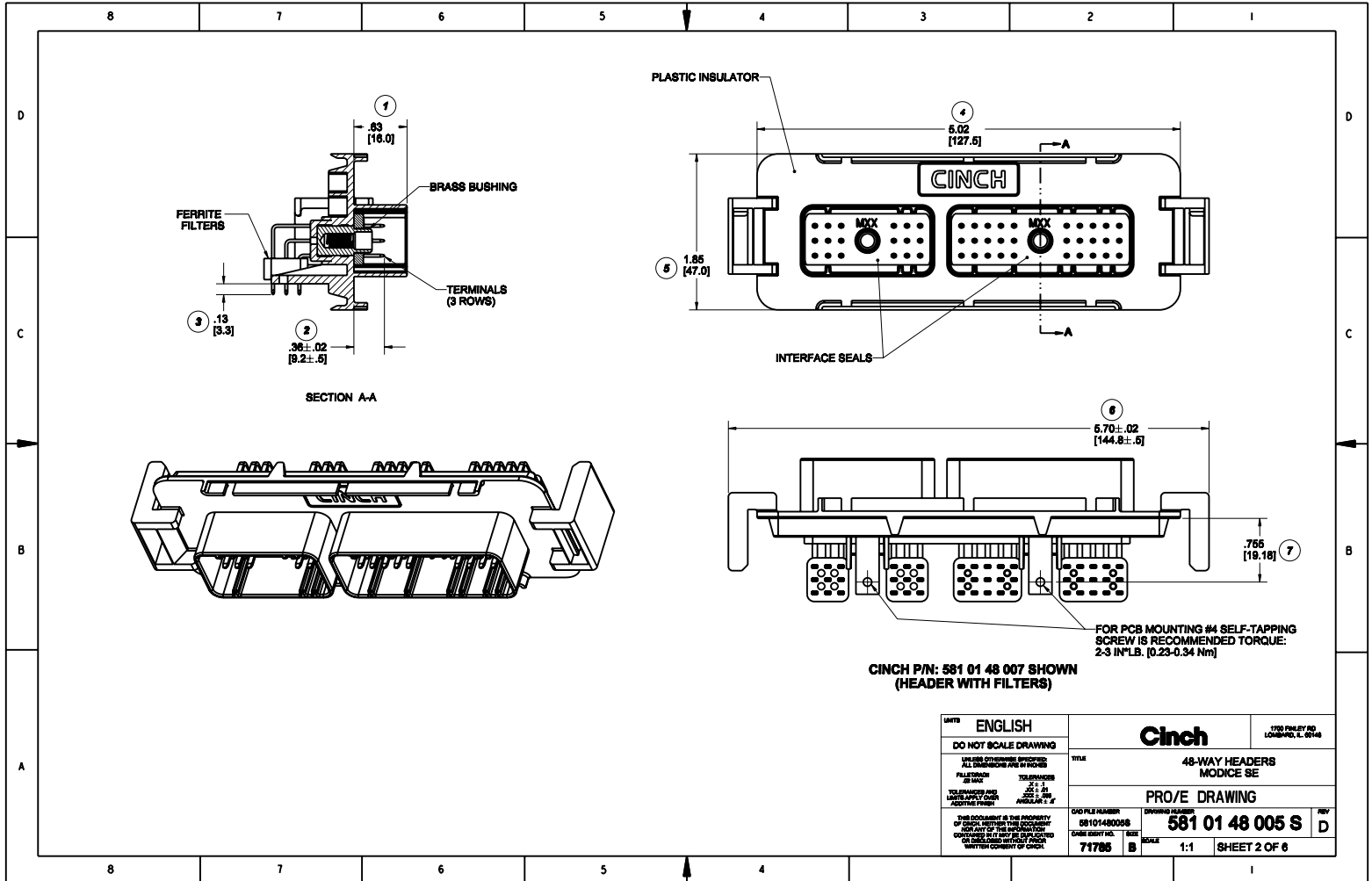
1. ALL DIMENSIONS ARE IN INCHES; DIMENSION INSIDE [X] ARE IN MM, AS REF. ONLY.
2. MATERIALS:
INTERFACE SEAL: SILICONE RUBBER, COLOR BLUE;
INSULATOR: 30 % GLASS FILLED POLYMER, COLOR BLACK;
BUSHING: BRASS ALLOY, UNPLATED 10-24 UNC THREAD;
TERMINAL BLADE: 1.5 MM BRASS WITH TIN OVER NICKEL PLATING;
FILTERS: FERRITE BLOCKS.
3. ALL HEADERS ARE REFLOW OR WAVE SOLDERING PROCESS, ROHS COMPLIANT.
4. MATES WITH CINCH SHS PUSH-TO-SEAT HARNESS CONNECTORS (SEE TABLE ABOVE).
5. THERMALLY CONDUCTIVE ADHESIVE PASTE SOLD SEPARATELY; RECOMMENDED IS LOCTITE 388.
6. MOSFET SPRING PLATES ARE SOLD SEPARATELY (FOR INSTALLATION REFER TO ENCLOSURE ASSEMBLY INSTRUCTIONS) SPRING LABELED AS "L" IS CINCH P/N: 581 00 00 020 AND SPRING LABELED AS "R" IS CINCH P/N: 581 00 00 021.
(IT IS RECOMMENDED THAT THE 4 SLOTS BE PROTECTED DURING CONFORMAL COATING)
7. STANDARD PACKAGE SIZE: 72 PARTS/CARTON BOX.

DRAWING REVISIONS

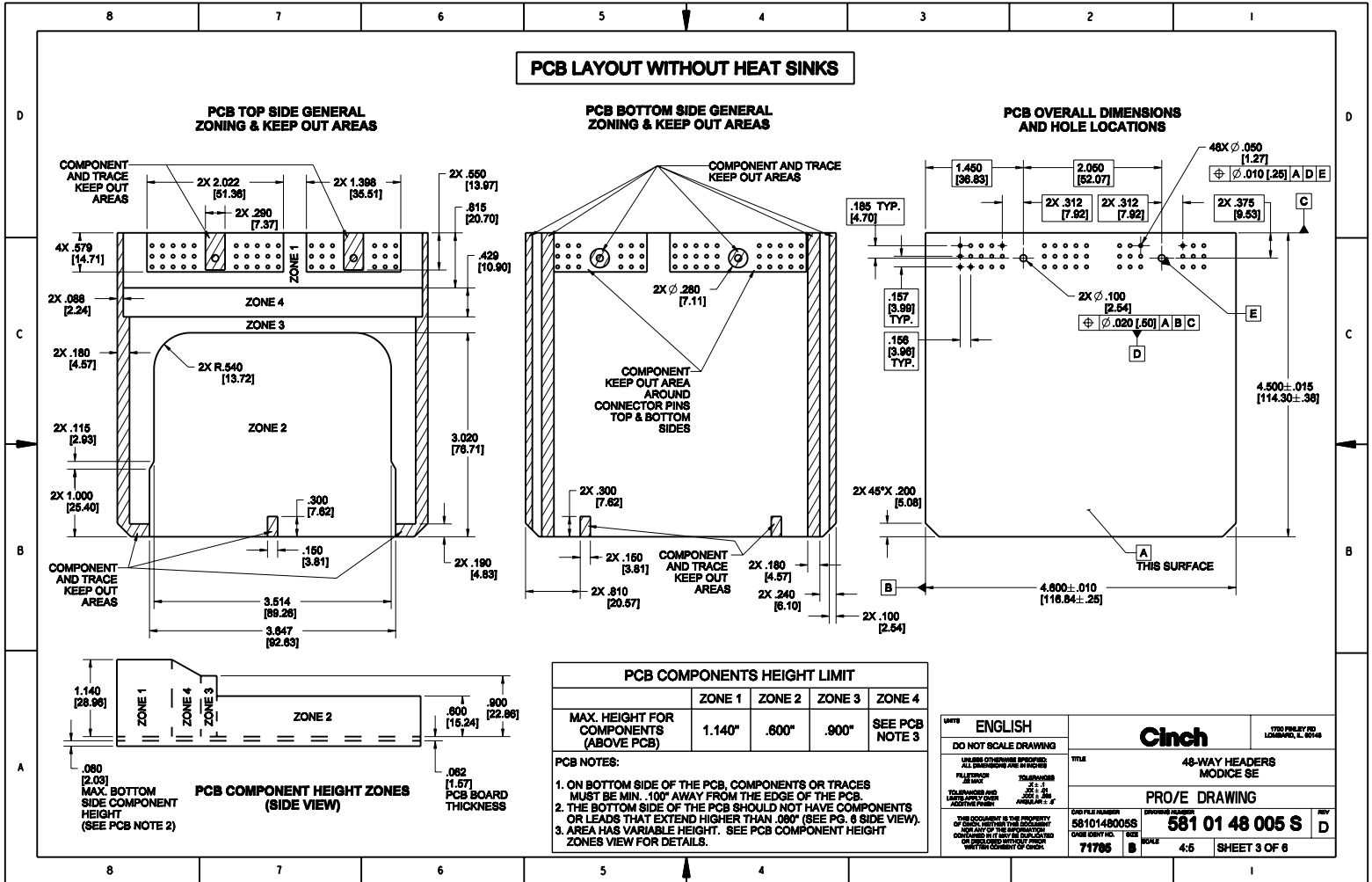
REV	DOCUMENT	APP	DATE
A	REL FOR PRODUCTION D.O. 06-1167	A.C.	7/21/05
B	ECN: 064468 ADDED LEGS AND ADDED SLOTS TO RIBS	A.C.	9/27/05
C	ECN: 064635 ADDED SHEET 6 ADDED SHEET 8 MODIFIED SHEET 3 MODIFIED SHEET 4	A.C.	3/24/06
D	ECN: 064408 REFORMATTED DRAWING FOR LAYOUTS REDRAWN WITH ADDITIONAL KEEP OUT AREAS	A.C.	9/28/06

RoHS COMPLIANT

UNITS	ENGLISH INCHES	PRO/E	DATE	TITLE	1328 FORLEY RD LOMBARD, IL 60148
DO NOT SCALE DRAWING			09/03/04	48-WAY HEADERS MODICE SE	
ALL DIMENSIONS UNLESS OTHERWISE SPECIFIED ARE IN INCHES		B. KOSTIC	09/03/04	MATERIAL	CONTROL SPEC NUMBER
FILETAGS: 28100	TOLERANCES: .0125, .005, .0025, .0015, .001, .0005, .00025, .00015, .0001	A. CAINES	11/18/04	SEE NOTE 2.	PROJECT NUMBER
		R. GARZA	11/18/04	CAD FILE NUMBER	A 14582
		R. QUIROZ	11/18/04	DRAWING NUMBER	581 01 48 005 S
				DATE FIRST SOL. SEE	SCALE SHEET 1 OF 6
				71786 B	1:1 SHEET 1 OF 6



UNITS	ENGLISH	Cinch	FIG. FILED IN
DO NOT SCALE DRAWING			LOWELL, U.S.A.
LET THE DIMENSIONS SPEAK FOR THEMSELVES ALL DIMENSIONS ARE IN INCHES	TOLERANCES	TITLE	48-WAY HEADERS MODICE SE
PLEASURES 32 MAX	± .01	PRO/E DRAWING	
TOLERANCES AND UNLESS SPECIFIED APPLY TO ALL DIMENSIONS	± .005	DWG FILE NUMBER	DRAWING NUMBER
	± .002	581 01 48 000 S	581 01 48 005 S
	± .001	DATE FIRST CAL. REV	71786 B
	± .0005	SCALE	1:1
		SHEET	2 OF 6



PCB LAYOUT WITHOUT HEAT SINKS

PCB TOP SIDE GENERAL ZONING & KEEP OUT AREAS

PCB BOTTOM SIDE GENERAL ZONING & KEEP OUT AREAS

PCB OVERALL DIMENSIONS AND HOLE LOCATIONS

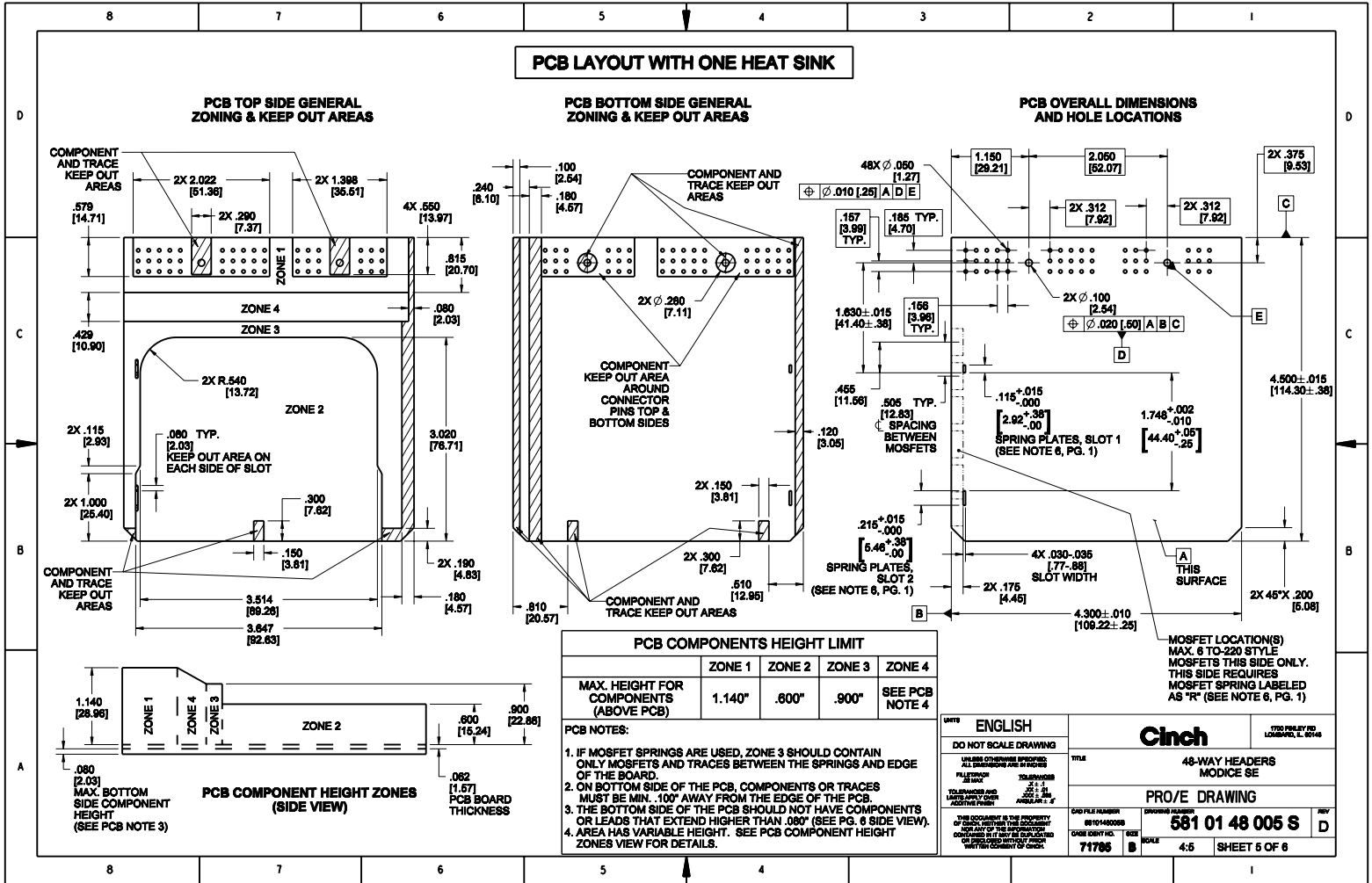
PCB COMPONENTS HEIGHT LIMIT

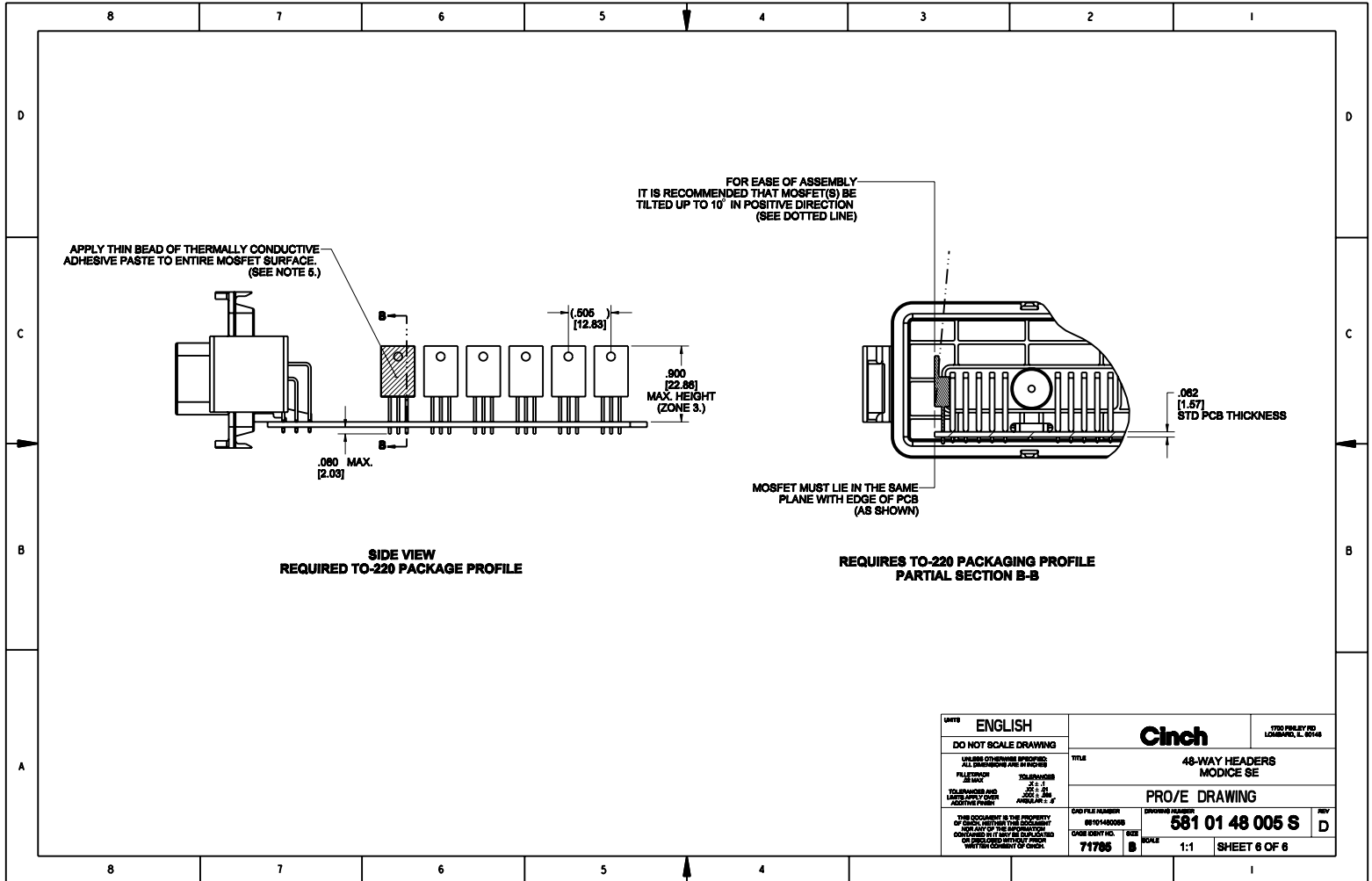
	ZONE 1	ZONE 2	ZONE 3	ZONE 4
MAX. HEIGHT FOR COMPONENTS (ABOVE PCB)	1.140"	.600"	.900"	SEE PCB NOTE 3

PCB NOTES:

1. ON BOTTOM SIDE OF THE PCB, COMPONENTS OR TRACES MUST BE MIN. .100" AWAY FROM THE EDGE OF THE PCB.
2. THE BOTTOM SIDE OF THE PCB SHOULD NOT HAVE COMPONENTS OR LEADS THAT EXTEND HIGHER THAN .080" (SEE PG. 8 SIDE VIEW).
3. AREA HAS VARIABLE HEIGHT. SEE PCB COMPONENT HEIGHT ZONES VIEW FOR DETAILS.

UNITS	ENGLISH	DATE PREPARED	LOWMEYER L. 8/14/86
DO NOT SCALE DRAWING		TITLE	48-WAY HEADERS MODICE SE
UNLESS OTHERWISE SPECIFIED: ALL DIMENSIONS ARE IN INCHES FRACTIONS SHALL BE IN 16ths TOLERANCES AND UNLESS SHOWN OTHERWISE SHALL BE: DIMENSIONS IN INCHES DECIMAL INCHES		DRAWING NUMBER	581 01 48 005 S
THIS DOCUMENT IS THE PROPERTY OF CLINCH. WITHIN THE COMPANY OR ANY OF THE SUBSIDIARIES IT IS TO BE REPRODUCED OR DISCLOSED WITHOUT WRITTEN CONSENT OF CLINCH.		SCALE	4:5
		SHEET	3 OF 6





UNITS	ENGLISH	FILED BY	LOUISIANA, L. 89143
DO NOT SCALE DRAWING		Cinch	
UNLESS OTHERWISE SPECIFIED: ALL DIMENSIONS ARE IN INCHES		TITLE	
FILED BY	TOLERANCES	48-WAY HEADERS	
FILED BY	±.015	MODICE SE	
TOLERANCES AND	±.010	PRO/E DRAWING	
UNLESS SHOWN	±.005	DATE FILED	581 01 48 005 S
AS SHOWN	±.002	DATE	71786
THIS DOCUMENT IS THE PROPERTY OF CINCH. IT IS TO BE USED ONLY FOR THE PURPOSES AND IN THE MANNER SPECIFIED HEREIN. IT IS TO BE RETURNED TO CINCH UPON REQUEST.		SCALE	1:1
		REV	D
		SHEET	6 OF 6