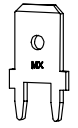
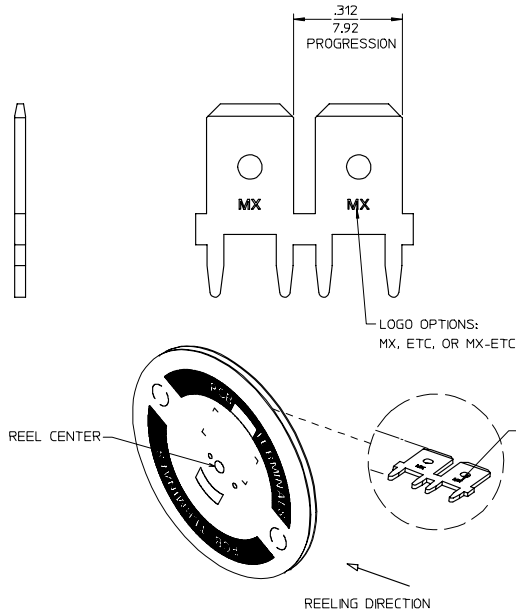
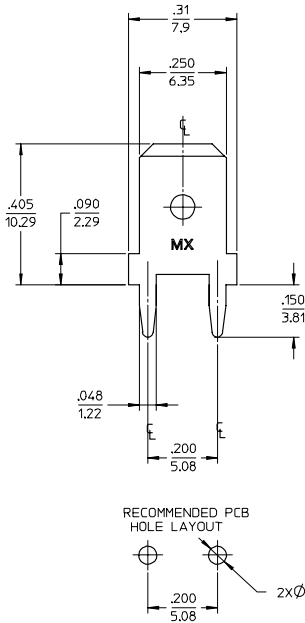


| MATERIAL NUMBER | ENGINEERING NUMBER | CARRIER | LOGO ORIENTATION |
|-----------------|--------------------|---------|------------------|
| 197054303       | 19705-4303         | STRIP   | IN               |
| 197054305       | 19705-4305         | STRIP   | OUT              |
| 197054301       | 19705-4301         | LOOSE   | -                |



SCALE 3:1

- NOTES:
1. BARE EDGES PERMISSIBLE AT CARRIER CUT OFF.
  2. MATERIAL: BRASS C26000 (.032/0.81) THICK.
  3. TAB CONFORMS TO NEMA SPECIFICATIONS.
  4. ALL DIMENSIONS AND NOTES REFERENCE UNLESS OTHERWISE NOTED.
  5. PLATING: MATTE TIN 150µN/3.814µm MINIMUM THICKNESS OVER NICKEL 50µN/1.254µm MINIMUM THICKNESS.
  6. REF: 9,000 MINIMUM PARTS PER REEL. REEL HAS 14" DIAMETER REEL WITH A 1.25" DIAMETER CENTER HOLE.
  7. PART IS ROHS COMPLIANT.

| REVISED PCB HOLE DIA   | QUALITY SYMBOLS | GENERAL TOLERANCES (UNLESS SPECIFIED) |        | DIMENSION STYLE           |             | SCALE                     | DESIGN UNITS | THIRD ANGLE PROJECTION |  |
|--|-----------------|---------------------------------------|--------|---------------------------|-------------|---------------------------|--------------|------------------------|--|
|  |                 | mm                                    | INCH   | IN/MM                     | IN/MM       | INCH                      | INCH         |                        |  |
| REVISED PCB HOLE DIA<br>EC NO. ETC2007-0403<br>DRAWN BY 2007/05/14<br>ORWENHLE<br>CHKD: JIMCONEIL 2007/05/14<br>APPR: JIMCONEIL 2007/05/15 | ▽=0<br>▽=0      | 4 PLACES                              | ± .005 | ± .005                    | DRAWN BY    | 11/08/96                  | 5:1          | INCH                   |  |
|  |                 | 3 PLACES                              | ± .013 | ± .01                     | CHECKED BY  | 11/08/96                  |              |                        |  |
|  |                 | 2 PLACES                              | ± .025 | ± .01                     | APPROVED BY | 11/08/96                  |              |                        |  |
|  |                 | 1 PLACE                               | ± .025 | ± .01                     | RWD         | 11/08/96                  |              |                        |  |
| ANGULAR  |                 | ±1/2°                                 |        |                           |             |                           |              |                        |  |
| DRAFT WHERE APPLICABLE MUST REMAIN WITHIN DIMENSIONS   |                 | SEE CHART                             |        | MATERIAL NO. SD-19705-430 |             | DOCUMENT NO. SD-19705-430 |              | SHEET NO. 1 OF 1       |  |
| THIS DRAWING CONTAINS INFORMATION THAT IS PROPRIETARY TO MOLEX INCORPORATED AND SHOULD NOT BE USED WITHOUT WRITTEN PERMISSION              |                 |                                       |        |                           |             |                           |              |                        |  |

tb\_frame\_C\_P\_AM\_T  
Rev. D 2004/06/28