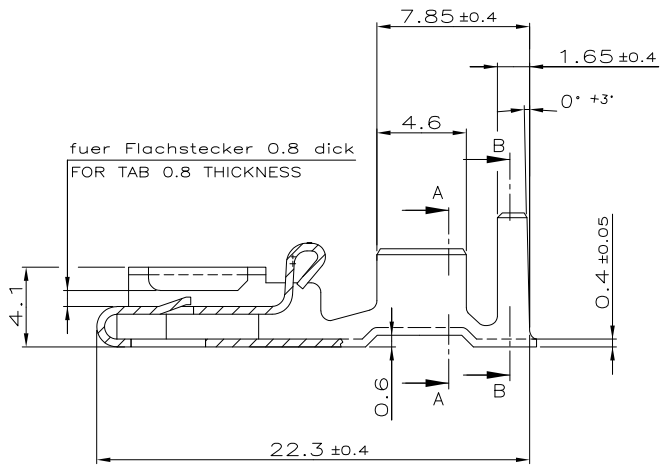


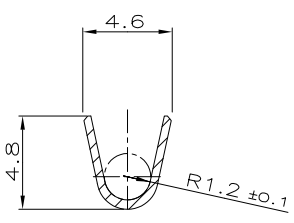
THIS DRAWING IS UNPUBLISHED.
VERTRAULICHE UNVERÖFFENTLICHTE ZEICHNUNG
© COPYRIGHT - By -

RELEASED FOR PUBLICATION
FREI FÜR VERÖFFENTLICHUNG
ALL RIGHTS RESERVED.
ALLE RECHTE VORBEHALTEN

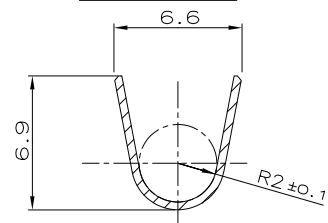
| LOC | | DIST | | REVISIONS | | | |
|-----|-----|--|--|------------|-----|------|--|
| AI | | - | | ÄNDERUNGEN | | | |
| P | LTR | DESCRIPTION | | DATE | DWN | APVD | |
| | | BESCHREIBUNG | | | | | |
| A | | NEW CAD DRAWING CREATED | | 18-AUG-05 | Abr | Goep | |
| A1 | | 928958-4/-6/-9 and 928959-4/-6/-9 ARE OBSOLETE | | 14-SEP-05 | Abr | Goep | |
| A2 | | ECR-10-026307 | | 19-JAN-11 | KK | HMR | |



Schnitt A-A
SECTION A-A



Schnitt B-B
SECTION B-B

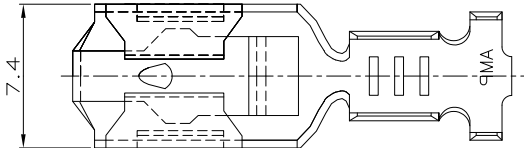


Leitung / WIRE :
Einzelanschlag : FLK Litze / SINGLE CONNECTION : FLK STRANDED WIRE
Doppelanschlag : FLR Litze / DOUBLE WIRE APPL: FLR STRANDED WIRE
FLK Litze (Außer 2.5-1.5 mm²) FLK STRANDED WIRE (OUTSIDE 2.5-1.5 mm²)

Verarbeitung / APPLICATION :
Leiter / WIRE : F-Crimp
Isolation : F- oder Überlappungs crimp / INSULATION : F- OR OVERLAPPING CRIMP
Isolationsdurchmesser / INSULATION DIA. : 3.3-4.7 mm
Drahtgrößenbereich / WIRE SIZE RANGE : >2.5-4.0 mm²

⚠ OBSOLETE

| OBsolete | Part No. | Material | Finish | Part No. | Rev. |
|----------|-----------------------|----------|----------------------|-----------------------|------|
| ⚠ | 0-928959-9 | CuZn30 | versilbert/SILVERED | 0-928958-9 | A |
| ⚠ | 0-928959-8 | CuSn4 | versilbert/SILVERED | 0-928958-8 | A |
| | 0-928959-7 | CuSn4 | vorverzinnt/PRETINED | 0-928958-7 | A |
| OBsolete | 0-928959-6 | CuZn30 | vorverzinnt/PRETINED | 0-928958-6 | A |
| | - | - | - | - | - |
| OBsolete | 0-928959-4 | CuSn4 | verzinnt/ELECTROTIN | 0-928958-4 | A |
| | 0-928959-3 | CuZn30 | verzinnt/ELECTROTIN | 0-928958-3 | A |
| | 0-928959-2 | CuSn4 | blank/PLAIN | 0-928958-2 | A |
| | 0-928959-1 | CuZn30 | blank/PLAIN | 0-928958-1 | A |
| | LOOSE PIECE | MATERIAL | SURFACE COLOR | PART NO | REV. |



| Leitungsquerschnitt in mm ² CROSS SECTION IN mm ² | | 0.5 | 0.75 | 1.0 | 1.5 | 2.0 | 2.5 | 3.0 | 4.0 | 6.0 | - |
|--|-----|-----|------|-----|-----|-----|-----|-----|-----|-----|---|
| Einzel- anschlag SINGLE CONNECTION | 1.0 | | | | | | X | | | | |
| | 1.5 | | | X | X | | X | | | | |
| | 2.5 | | | X | X | | X | | | | |
| | 4.0 | X | | | | | | | | | |
| | - | | | | | | | | | | |

THIS DRAWING IS A CONTROLLED DOCUMENT.
DIESE ZEICHNUNG IST EIN KONTROLLIERTES DOKUMENT.

DIMENSIONS:
DIMENSIONEN:
mm

TOLERANCES UNLESS
OTHERWISE SPECIFIED:
ALLGEMEINERLEGEN

0 PLC ± 0.2
1 PLC ±
2 PLC ±
3 PLC ±
4 PLC ±
ANGLES / WINKEL ±

MATERIAL FINISH / OBERFLÄCHE / FARBE

DWN Abraham, G. 18-AUG-05
CHK Goepdel, C. 22-AUG-05
APVD Bleicher, M. 23-AUG-05

NAME
Positive Lock Steckhuelse
POSITIVE LOCK RECEPTACLE

APPLICATION SPEC
VERARBEITUNGSSPEZ
114-18365

WEIGHT
GEWICHT 1.2 g

SIZE CAGE CODE DRAWING NO
ZEICHNUNGS-NR.
A3 00779 928958

RESTRICTED TO
NUR FÜR

CUSTOMER DRAWING / KUNDENZEICHNUNG SCALE MASSSTAB 5:1 SHEET BLATT 1 OF VON 1 REV A2

STE TE Connectivity