

REVISION K

RECOMMENDED PCB LAYOUT FOR ERF8-XXX-XX.X-X-DV-XXXX-TR

1/4/2011 ECN-145838

DESIGNED & DIMENSIONED
IN MILLIMETERS [INCHES]

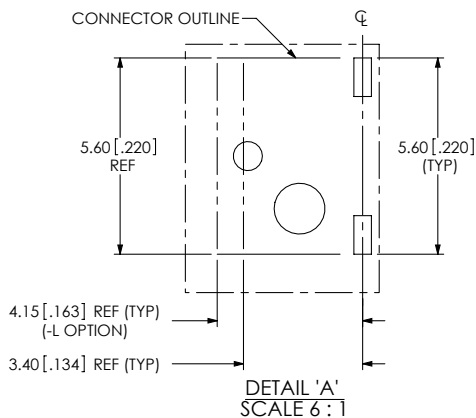
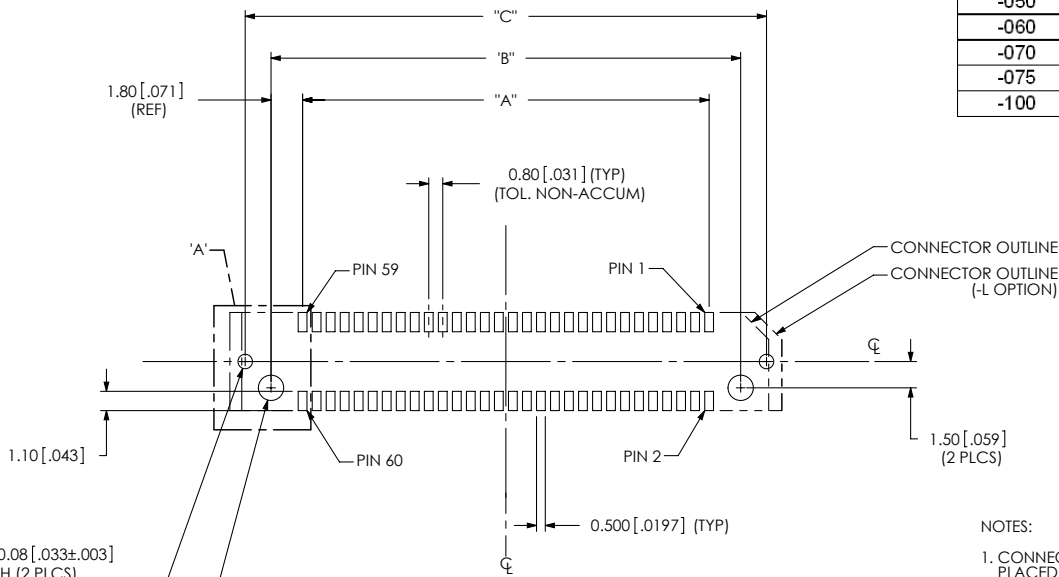


TABLE 1			
POSITION	"A"	"B"	"C"
-005	3.20 [.126]	6.80 [.268]	9.80 [.386]
-010	7.20 [.283]	10.80 [.425]	13.80 [.543]
-011	8.00 [.315]	11.60 [.457]	14.60 [.575]
-013	9.60 [.378]	13.20 [.520]	16.20 [.638]
-020	15.20 [.598]	18.80 [.740]	21.80 [.858]
-023	17.60 [.693]	21.20 [.835]	24.20 [.953]
-025	19.20 [.756]	22.80 [.898]	25.80 [1.016]
-030	23.20 [.913]	26.80 [1.055]	29.80 [1.173]
-035	27.20 [1.071]	30.80 [1.213]	33.80 [1.331]
-040	31.20 [1.228]	34.80 [1.370]	37.80 [1.488]
-049	38.40 [1.512]	42.00 [1.654]	45.00 [1.772]
-050	39.20 [1.543]	42.80 [1.685]	45.80 [1.803]
-060	47.20 [1.858]	50.80 [2.000]	53.80 [2.118]
-070	55.20 [2.173]	58.80 [2.315]	61.80 [2.433]
-075	59.20 [2.331]	62.80 [2.472]	65.80 [2.591]
-100	79.20 [3.118]	82.80 [3.260]	85.80 [3.378]



K
 $\varnothing 0.83 \pm 0.08$ [.033 \pm .003]
 PTH (2 PLCS)
 (-L OPTION ONLY)
 TO BE SOLDERED USING
 PASTE-IN-HOLE TECHNOLOGY
 $\varnothing 1.45 \pm 0.08$ [.057 \pm .003]
 NPTH (2 PLCS)

FIG. 1
 ALL OPTIONS EXCEPT - EGPS
 (-030 POSITION SHOWN)
 (ALL DIMENSIONS ARE SYMMETRIC ABOUT THE CENTERLINE)

F:\DWG\MISC\mk1g\FOOTPRINT\ERF8-XXX-XX.X-X-DV-XXXX-TR-FOOTPRINT.SLDDRW

NOTES:

- CONNECTOR ENVELOPE DIMENSIONS. OTHER COMPONENTS PLACED ON PCB SHALL AVOID THIS ZONE.

PROPRIETARY NOTE
 THIS DOCUMENT CONTAINS INFORMATION
 CONFIDENTIAL AND PROPRIETARY TO
 SAMTEC, INC. AND SHALL NOT BE REPRODUCED
 OR TRANSFERRED TO OTHER DOCUMENTS OR
 DISCLOSED TO OTHERS OR USED FOR ANY
 PURPOSE OTHER THAN THAT WHICH IT WAS
 OBTAINED WITHOUT THE EXPRESSED WRITTEN
 CONSENT OF SAMTEC, INC.

samtec

520 PARK EAST BLVD, NEW ALBANY, IN 47150
 PHONE: 812-944-6733 FAX: 812-948-5047
 e-Mail: info@SAMTEC.com code: 55322

REVISION K

RECOMMENDED STENCIL LAYOUT FOR ERF8-XXX-XX.X-X-DV-XXXX-TR

DESIGNED & DIMENSIONED
IN MILLIMETERS [INCHES]

NOTE:
STENCIL TO BE 0.15 [.006] THICK.

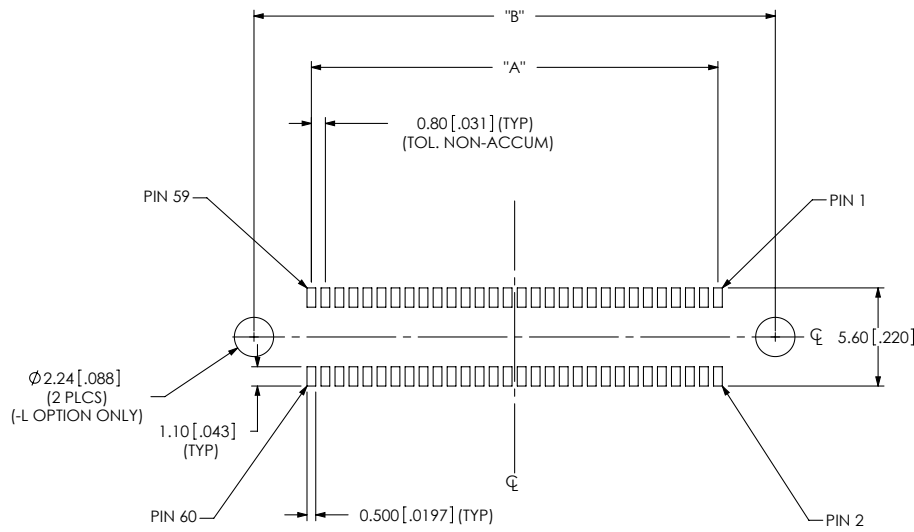


TABLE 2		
POSITION	"A"	"B"
-005	3.20 [.126]	9.80 [.386]
-010	7.20 [.283]	13.80 [.543]
-011	8.00 [.315]	14.60 [.575]
-013	9.60 [.378]	16.20 [.638]
-020	15.20 [.598]	21.80 [.858]
-023	17.60 [.693]	24.20 [.953]
-025	19.20 [.756]	25.80 [1.016]
-030	23.20 [.913]	29.80 [1.173]
-035	27.20 [1.071]	33.80 [1.213]
-040	31.20 [1.228]	37.80 [1.488]
-049	38.40 [1.512]	45.00 [1.772]
-050	39.20 [1.543]	45.80 [1.803]
-060	47.20 [1.858]	53.80 [2.118]
-070	55.20 [2.173]	61.80 [2.433]
-075	59.20 [2.331]	65.80 [2.591]
-100	79.20 [3.118]	85.80 [3.378]

FIG. 2
(-030 POSITION SHOWN)
(ALL DIMENSIONS ARE SYMMETRIC ABOUT THE CENTERLINE)

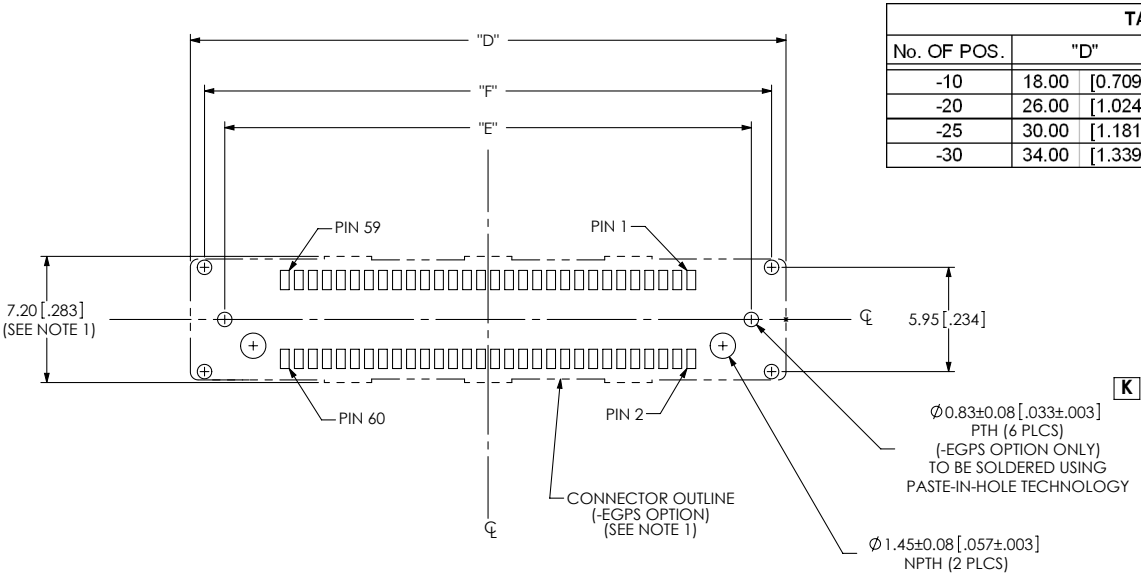
PROPRIETARY NOTE

THIS DOCUMENT CONTAINS INFORMATION
CONFIDENTIAL AND PROPRIETARY TO
SAMTEC, INC. AND SHALL NOT BE REPRODUCED
OR TRANSFERRED TO OTHER DOCUMENTS OR
DISCLOSED TO OTHERS OR USED FOR ANY
PURPOSE OTHER THAN THAT WHICH IT WAS
OBTAINED WITHOUT THE EXPRESSED WRITTEN
CONSENT OF SAMTEC, INC.



520 PARK EAST BLVD, NEW ALBANY, IN 47150
PHONE: 812-944-6733 FAX: 812-948-5047
e-Mail: info@SAMTEC.com code: 55322

F:\DWG\MISC\mk1g\FOOTPRINT\ERF8-XXX-XX.X-X-DV-XXXX-TR-FOOTPRINT.SLDDRW



No. OF POS.	"D"		"E"		"F"	
-10	18.00	[0.709]	14.00	[0.551]	16.36	[0.644]
-20	26.00	[1.024]	22.00	[0.866]	24.36	[0.959]
-25	30.00	[1.181]	26.00	[1.024]	28.36	[1.117]
-30	34.00	[1.339]	30.00	[1.181]	32.36	[1.274]

FIG. 3
 -EGPS OPTION
 (-030 POSITION SHOWN)
 (SAME AS FIG.1, EXCEPT AS SHOWN)
 (ALL DIMENSIONS ARE SYMMETRIC ABOUT THE CENTERLINE)

PROPRIETARY NOTE
 THIS DOCUMENT CONTAINS INFORMATION
 CONFIDENTIAL AND PROPRIETARY TO
 SAMTEC, INC. AND SHALL NOT BE REPRODUCED
 OR TRANSFERRED TO OTHER DOCUMENTS OR
 DISCLOSED TO OTHERS OR USED FOR ANY
 PURPOSE OTHER THAN THAT WHICH IT WAS
 OBTAINED WITHOUT THE EXPRESSED WRITTEN
 CONSENT OF SAMTEC, INC.

samtec
 520 PARK EAST BLVD, NEW ALBANY, IN 47150
 PHONE: 812-944-6733 FAX: 812-948-5047
 e-Mail: info@SAMTEC.com code: 55322

NOTE:
STENCIL TO BE 0.15[.006] THICK.

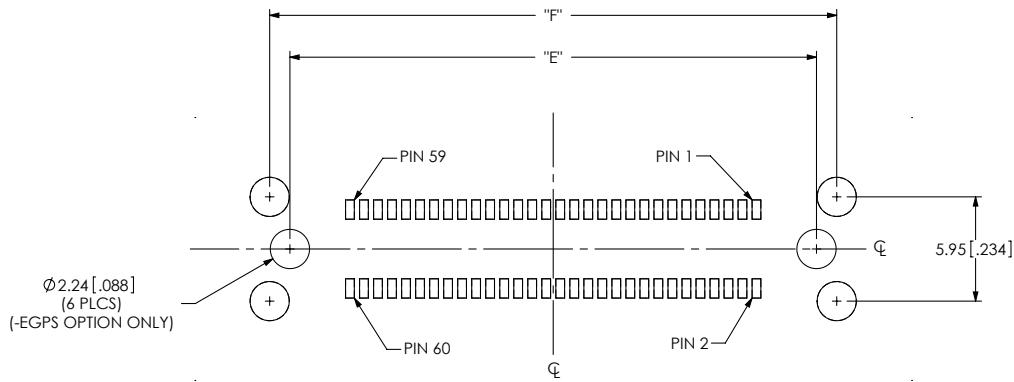


FIG. 4
-EGPS OPTION
(-030 POSITION SHOWN)
(SAME AS FIG.2, EXCEPT AS SHOWN)
(ALL DIMENSIONS ARE SYMMETRIC ABOUT THE CENTERLINE)

PROPRIETARY NOTE
THIS DOCUMENT CONTAINS INFORMATION
CONFIDENTIAL AND PROPRIETARY TO
SAMTEC, INC. AND SHALL NOT BE REPRODUCED
OR TRANSFERRED TO OTHER DOCUMENTS OR
DISCLOSED TO OTHERS OR USED FOR ANY
PURPOSE OTHER THAN THAT WHICH IT WAS
OBTAINED WITHOUT THE EXPRESSED WRITTEN
CONSENT OF SAMTEC, INC.

samtec
520 PARK EAST BLVD, NEW ALBANY, IN 47150
PHONE: 812-944-6733 FAX: 812-948-5047
e-Mail: info@SAMTEC.com code: 55322