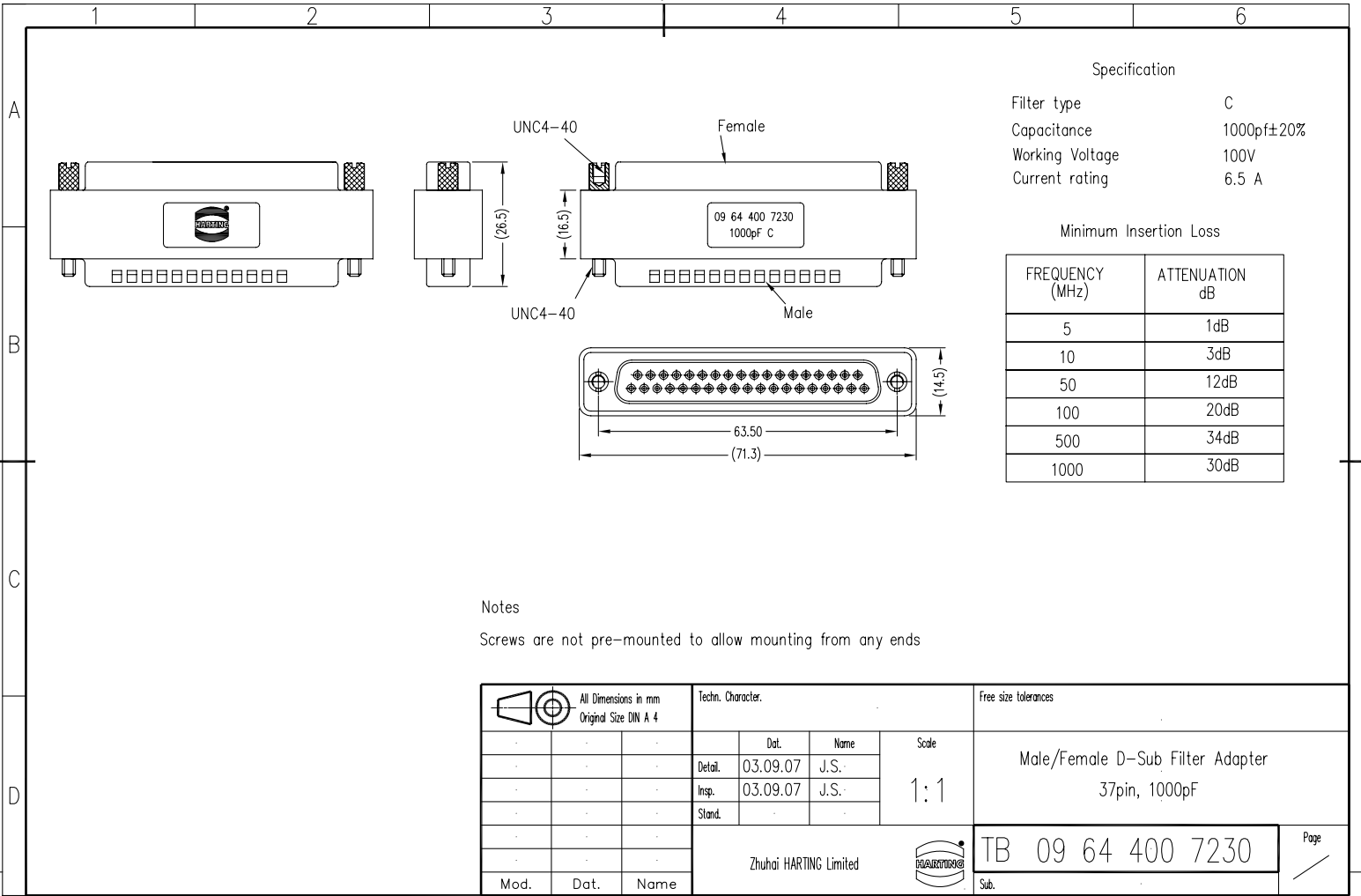


All rights reserved



Specification

Filter type	C
Capacitance	1000pf±20%
Working Voltage	100V
Current rating	6.5 A

Minimum Insertion Loss

FREQUENCY (MHz)	ATTENUATION dB
5	1dB
10	3dB
50	12dB
100	20dB
500	34dB
1000	30dB

Notes

Screws are not pre-mounted to allow mounting from any ends

<p>All Dimensions in mm Original Size DIN A 4</p>	Techn. Character.			Free size tolerances	
		Dat.	Name	Scale	Male/Female D-Sub Filter Adapter 37pin, 1000pF
		03.09.07	J.S.		
		03.09.07	J.S.		
			1:1		
Mod.	Dat.	Name	Zhuhai HARTING Limited		TB 09 64 400 7230
					Sub.

Page