
USB RF Mouse with nRF24L01

nRF24L01 is a single chip RF-transceiver intended for applications in the 2.4 GHz ISM band.

AT89STK-05 is a high-performance Flash version of the 80C51 single-chip 8-bit micro controllers with full speed USB functions.

This application note describes an application using nRF24L01 and AT89STK-05:
USB RF Mouse.

The following document is important to read prior to this application note (available on www.atmel.com):

nRF24L01 software driver for C51 microcontroller:

AT89STK-05 software driver description to control nRF24L01 device.

References

AT89STK-05 data sheet (available on www.atmel.com)

nRF24L01 data sheet (available on www.nordicsemi.no)

Acronyms

USB:
Universal Serial Bus

ISM:
Industrial, Scientific and Medical (radio spectrum)



USB RF Mouse

Application Note

7650A-USB-05/06



RF Mouse Overview

The transmitter board is composed of an nRF24L01 controlled by an AT89STK-05.

The mouse contactors are connected on AT89STK-05 IOs.

The transmitter sends mouse info via the RF part.

The power supply of the transmitter board comes from a battery.

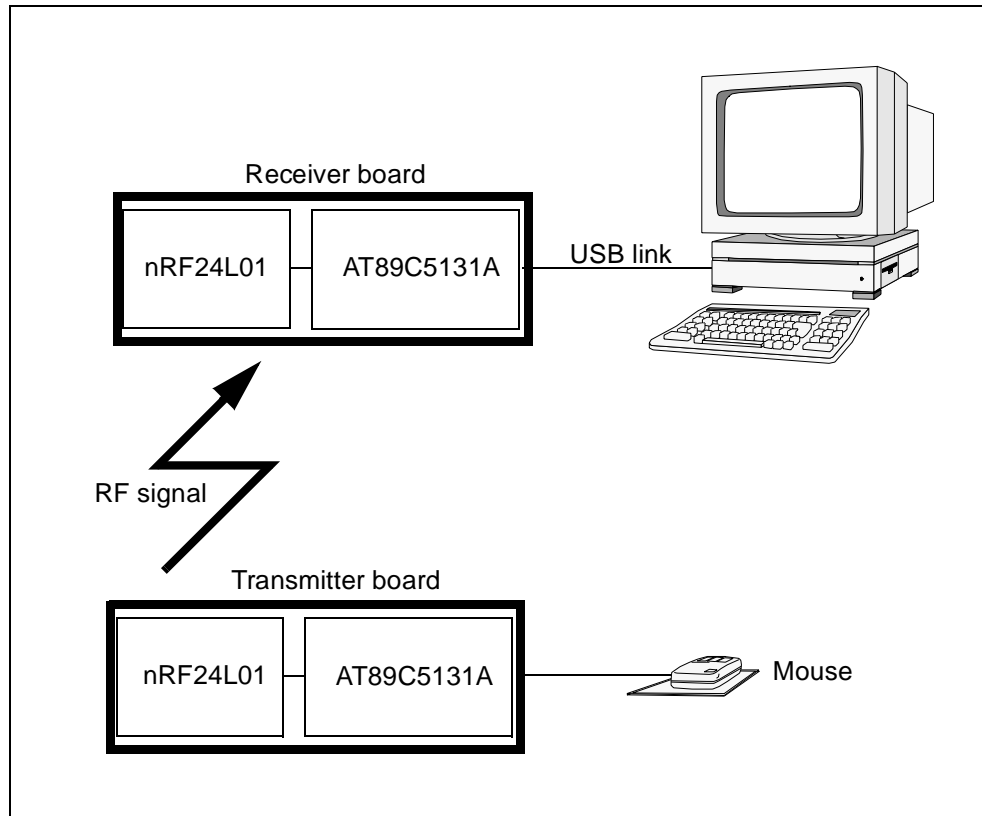
The receiver part decodes the mouse info.

AT89STK-05 is connected to the PC with an USB link.

The USB enumeration is "HID mouse".

The power supply of the receiver board comes from USB (5V to 3V with a linear regulator converter).

Figure 1. Typical Application



The nRF24L01 reference module is connected to AT89STK05 demo board (see www.atmel.com).

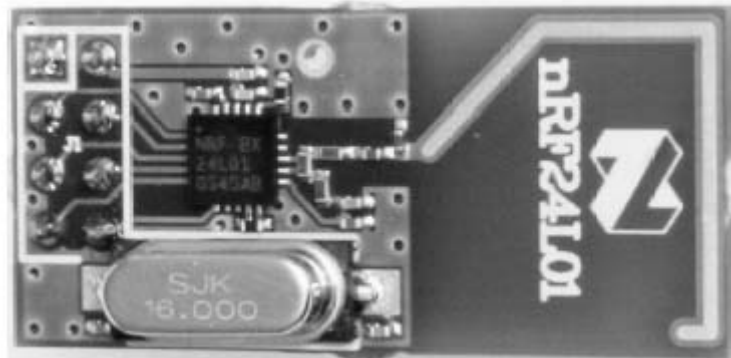
nRF24L01 Reference Module

nRF24L01 reference module is a complete RF-Module, designed to evaluate the RF IC performance and develop custom specific applications.

The RF-Module is included into the nRF24L01-EVKIT but is also available separately.

Two RF-Modules are used, one for the transmitter part and one for the receiver part.

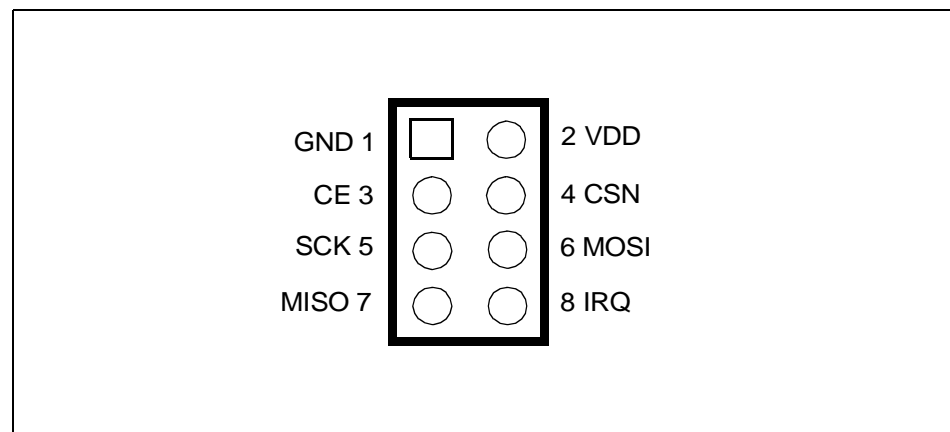
Figure 2. nRF24L01 Reference Module



nRF24L01 is soldered on the board. The antenna is designed on the board. All the signals to control nRF24L01 are on the 8 points connector.

All the documents concerning the board are available on www.nordicsemi.no.

Figure 3. Reference Module Connector (component side)

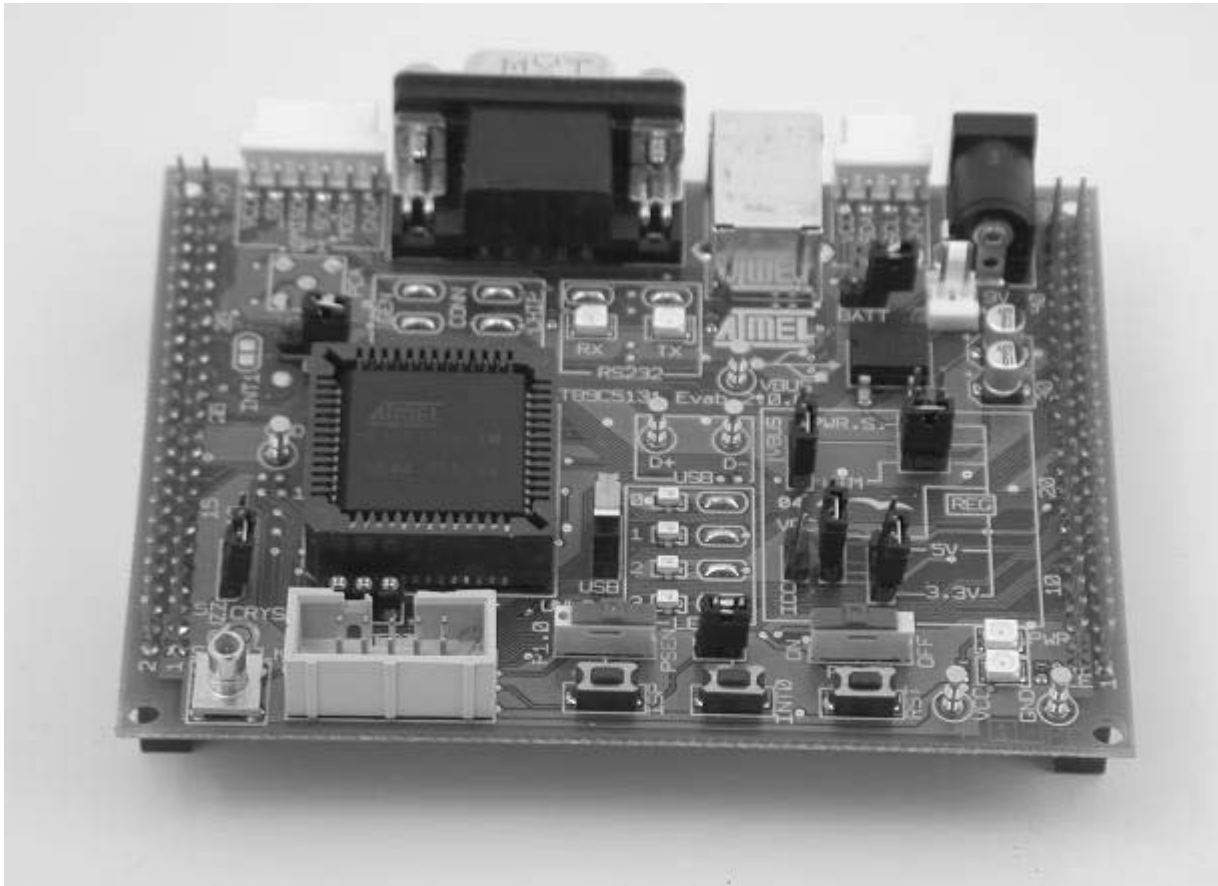


AT89STK-05 Starter kit

AT89STK-05 starter kit is connected on USB bus. AT89C5130 (16K) Flash or AT89C5131 (32K) Flash can be plugged on the PLCC Flash socket depending on the application code size. The power supply of the starter kit comes from USB (5V). The microcontroller can directly run from the USB voltage but the RF device operates from a lower voltage and the C51 has to be powered from the same voltage.

The starter kit allows to operate at different voltage levels and from different sources. For this demonstration it shall be configured at 3.3V in bus power mode as shown in Figure 4.

Figure 4. AT89STK-05 Starter kit



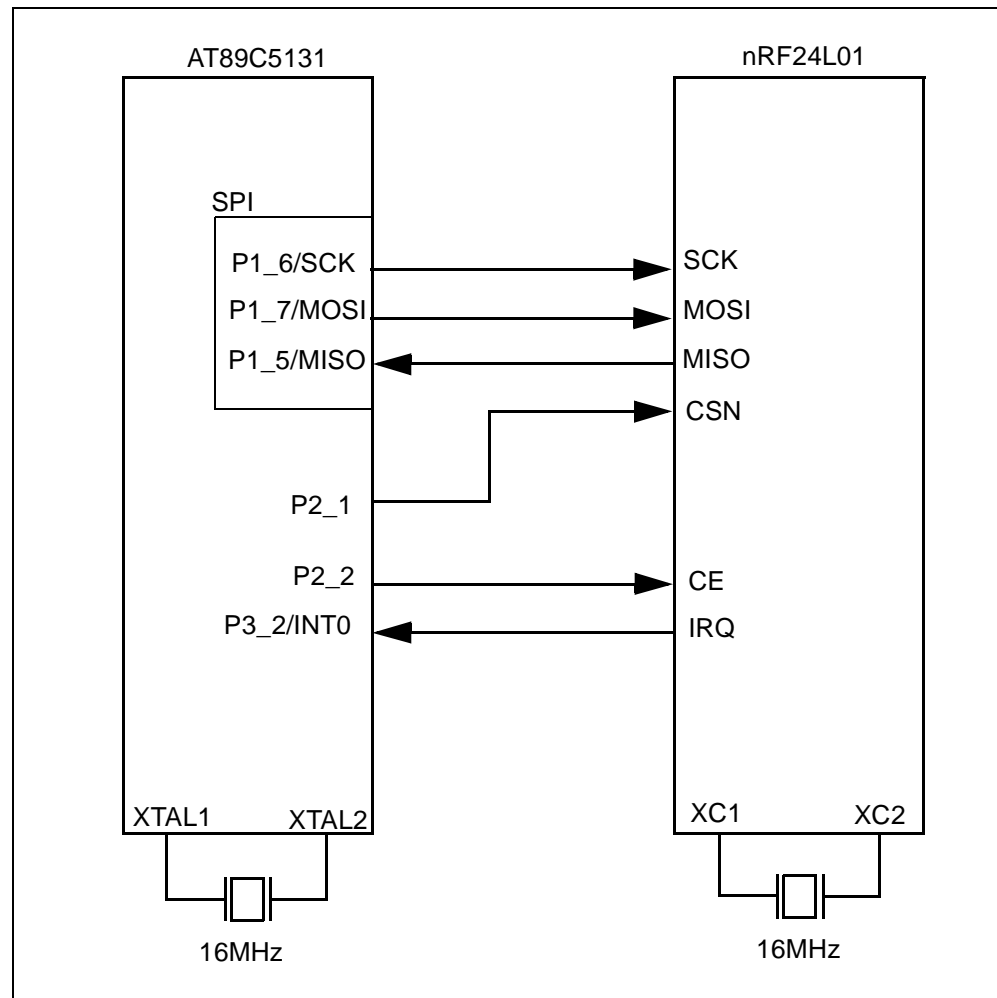
The left connector (J5), the right connector (J6) and the SPI connector (J2) provide the required signals to provide the nRF24L01 module

Hardware Connections

AT89C5131 hardware SPI bus is used to configure nRF24L01. The SPI bus is also used to send /receive data via the RF.

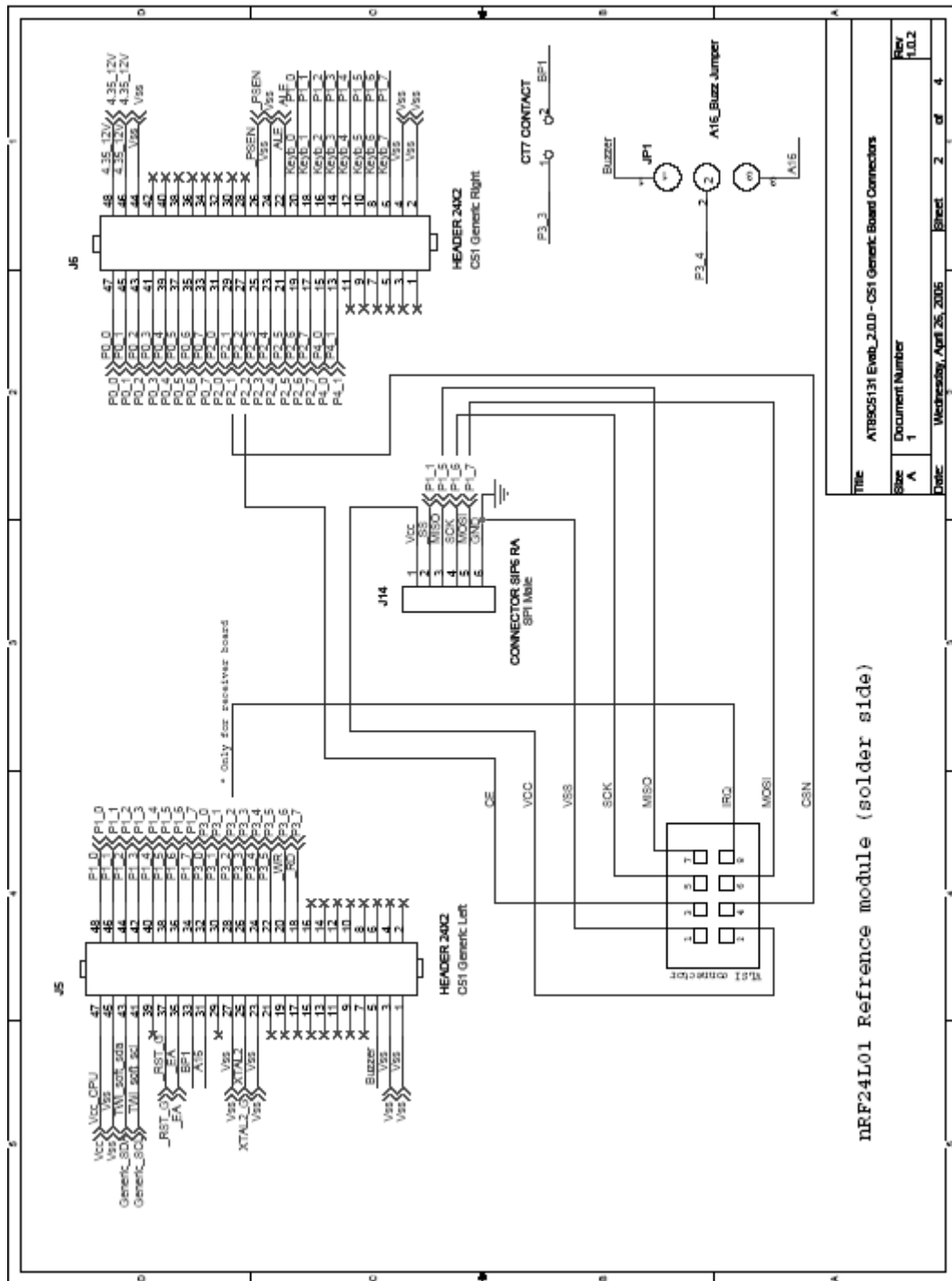
The transmitter and receiver hardware connections are identical.

Figure 5. AT89STK-05 and nRF24L01



Note: Both ICs can share the same crystal if placed on the same PCB.

Figure 6. Connections between AT89STK-05 and nRF24L01 boards



RF Mouse Software

The RF mouse software is divided in two parts:

- transmitter part
- receiver part

Transmitter part

The transmitter part controls the signals from the mouse and send RF data. The default parameters are programmed for data pipe number (Pipe 0) and for frequency channel (RF Channel 2). The TX Payload command is used to send the data byte with mouse information.

In the config.h file, the flag "nRF24L01_TRANSMITTER" must be defined.

The data byte contains on each bit a mouse status (left, right...). This byte is described below in Table 1.

Table 1. Mouse Status

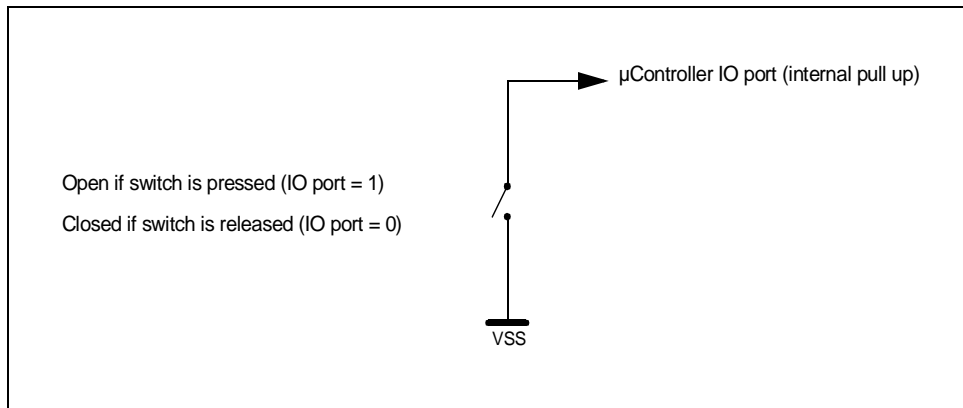
Bit number	Value
7	Unused
6	Unused
5	Cleared if LEFT CLICK pressed
4	Cleared if RIGHT CLICK pressed
3	Cleared if LEFT pressed
2	Cleared if RIGHT pressed
1	Cleared if DOWN pressed
0	Cleared if UP pressed

The mouse switches are connected to standard IOs of AT89STK-05. Table 2 describes the hardware connections between the mouse and the AT89STK-05.

Table 2. AT89C5131 IOs Description

Mouse switch	AT89C5131 pin number
LEFT CLICK	P3_3
RIGHT CLICK	P1_3
LEFT	P3_7
RIGHT	P4_0
DOWN	P3_6
UP	P3_5

Figure 7. Description of Mouse Switch Connection



A message is sent if an event appears on the mouse (press or release).

When a switch is pressed, a message is sent to the receiver part.

When a switch is released, a message is sent to the receiver part.

The result of pressing a button is only two messages, whatever the duration of the press.

Receiver Part

The receiver part controls the USB link (HID mouse enumeration), the reception of RF data and the decoding of data protocol.

The software manages all the mouse movements even diagonals.

In the config.h file, the flag “nRF24L01_RECEIVER” must be defined.

Each polling period, the embedded USB task sends a message to PC with the mouse status. This message contains 4 data bytes:

- usb_mouse_report[0]
- usb_mouse_report[1]
- usb_mouse_report[2]
- usb_mouse_report[3]

Figure 8. usb_mouse_report

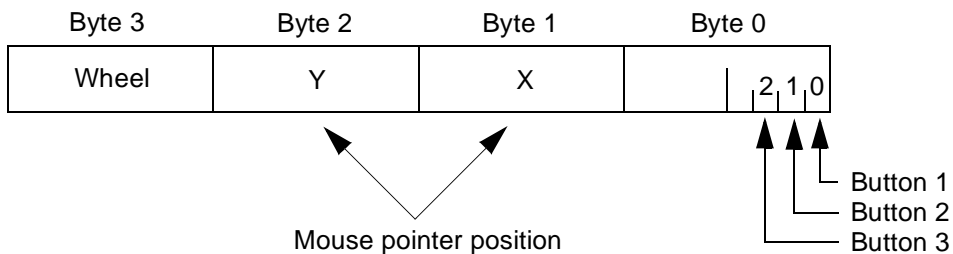


Table 3. usb_mouse_report[0]

Bit number	Value
7	Unused
6	Unused
5	Unused
4	Unused
3	Unused
2	Set if Middle button Not implemented
1	Set if Right button
0	Set if Left button

Table 4. usb_mouse_report[1]

Byte value	Value
0xFD	Move left
0x03	Move right
0x00	Move stop

Table 5. usb_mouse_report[2]

Byte value	Value
0xFD	Move up
0x03	Move down
0x00	Move stop

Table 6. usb_mouse_report[3]

Byte value	Value
1	Scroll up Not implemented
0	Scroll reset Not implemented
-1	Scroll down Not implemented



Atmel Corporation

2325 Orchard Parkway
San Jose, CA 95131, USA
Tel: 1(408) 441-0311
Fax: 1(408) 487-2600

Regional Headquarters

Europe

Atmel Sarl
Route des Arsenaux 41
Case Postale 80
CH-1705 Fribourg
Switzerland
Tel: (41) 26-426-5555
Fax: (41) 26-426-5500

Asia

Room 1219
Chinachem Golden Plaza
77 Mody Road Tsimshatsui
East Kowloon
Hong Kong
Tel: (852) 2721-9778
Fax: (852) 2722-1369

Japan

9F, Tonetsu Shinkawa Bldg.
1-24-8 Shinkawa
Chuo-ku, Tokyo 104-0033
Japan
Tel: (81) 3-3523-3551
Fax: (81) 3-3523-7581

Atmel Operations

Memory

2325 Orchard Parkway
San Jose, CA 95131, USA
Tel: 1(408) 441-0311
Fax: 1(408) 436-4314

Microcontrollers

2325 Orchard Parkway
San Jose, CA 95131, USA
Tel: 1(408) 441-0311
Fax: 1(408) 436-4314

La Chantrerie

BP 70602
44306 Nantes Cedex 3, France
Tel: (33) 2-40-18-18-18
Fax: (33) 2-40-18-19-60

ASIC/ASSP/Smart Cards

Zone Industrielle
13106 Rousset Cedex, France
Tel: (33) 4-42-53-60-00
Fax: (33) 4-42-53-60-01

1150 East Cheyenne Mtn. Blvd.
Colorado Springs, CO 80906, USA
Tel: 1(719) 576-3300
Fax: 1(719) 540-1759

Scottish Enterprise Technology Park
Maxwell Building
East Kilbride G75 0QR, Scotland
Tel: (44) 1355-803-000
Fax: (44) 1355-242-743

RF/Automotive

Theresienstrasse 2
Postfach 3535
74025 Heilbronn, Germany
Tel: (49) 71-31-67-0
Fax: (49) 71-31-67-2340

1150 East Cheyenne Mtn. Blvd.
Colorado Springs, CO 80906, USA
Tel: 1(719) 576-3300
Fax: 1(719) 540-1759

Biometrics/Imaging/Hi-Rel MPU/ High Speed Converters/RF Datacom

Avenue de Rochepleine
BP 123
38521 Saint-Egreve Cedex, France
Tel: (33) 4-76-58-30-00
Fax: (33) 4-76-58-34-80

Literature Requests
www.atmel.com/literature

Disclaimer: The information in this document is provided in connection with Atmel products. No license, express or implied, by estoppel or otherwise, to any intellectual property right is granted by this document or in connection with the sale of Atmel products. **EXCEPT AS SET FORTH IN ATMEL'S TERMS AND CONDITIONS OF SALE LOCATED ON ATMEL'S WEB SITE, ATMEL ASSUMES NO LIABILITY WHATSOEVER AND DISCLAIMS ANY EXPRESS, IMPLIED OR STATUTORY WARRANTY RELATING TO ITS PRODUCTS INCLUDING, BUT NOT LIMITED TO, THE IMPLIED WARRANTY OF MERCHANTABILITY, FITNESS FOR A PARTICULAR PURPOSE, OR NON-INFRINGEMENT. IN NO EVENT SHALL ATMEL BE LIABLE FOR ANY DIRECT, INDIRECT, CONSEQUENTIAL, PUNITIVE, SPECIAL OR INCIDENTAL DAMAGES (INCLUDING, WITHOUT LIMITATION, DAMAGES FOR LOSS OF PROFITS, BUSINESS INTERRUPTION, OR LOSS OF INFORMATION) ARISING OUT OF THE USE OR INABILITY TO USE THIS DOCUMENT, EVEN IF ATMEL HAS BEEN ADVISED OF THE POSSIBILITY OF SUCH DAMAGES.** Atmel makes no representations or warranties with respect to the accuracy or completeness of the contents of this document and reserves the right to make changes to specifications and product descriptions at any time without notice. Atmel does not make any commitment to update the information contained herein. Unless specifically provided otherwise, Atmel products are not suitable for, and shall not be used in, automotive applications. Atmel's products are not intended, authorized, or warranted for use as components in applications intended to support or sustain life.

© Atmel Corporation 2006. All rights reserved. Atmel®, logo and combinations thereof, and Everywhere You Are® are the trademarks or registered trademarks, of Atmel Corporation or its subsidiaries. Other terms and product names may be trademarks of others.



Printed on recycled paper.

7650A-USB-05/06