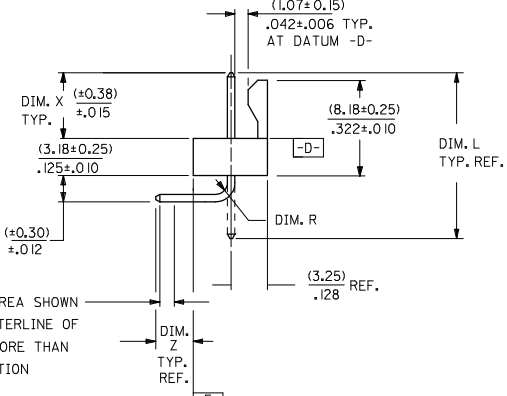
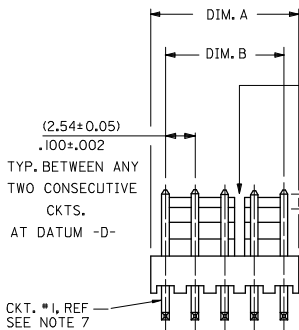
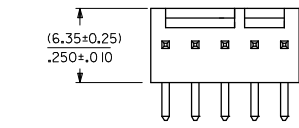


	13	12	11	10	9	8	7	6	5	4	3	2	1
J	28	(71.12 / 70.61) 2.800 / 2.780	(68.58 ± 0.25) 2.700 ± .010	4 , 5 24 , 25									
	27	(68.58 / 68.07) 2.700 / 2.680	(66.04 ± 0.25) 2.600 ± .010	4 , 5 24 , 25									
I	26	(66.04 / 65.53) 2.600 / 2.580	(63.50 ± 0.25) 2.500 ± .010	4 , 5 20 , 21									
	25	(63.50 / 62.99) 2.500 / 2.480	(60.96 ± 0.25) 2.400 ± .010	4 , 5 20 , 21									
H	24	(60.96 / 60.45) 2.400 / 2.380	(58.42 ± 0.25) 2.300 ± .010	4 , 5 20 , 21									
	23	(58.42 / 57.96) 2.300 / 2.282	(55.88 ± 0.23) 2.200 ± .009	4 , 5 20 , 21									
G	22	(55.88 / 55.42) 2.200 / 2.182	(53.34 ± 0.23) 2.100 ± .009	4 , 5 16 , 17									
	21	(53.34 / 52.88) 2.100 / 2.082	(50.80 ± 0.23) 2.000 ± .009	4 , 5 16 , 17									
F	20	(50.80 / 50.34) 2.000 / 1.982	(48.26 ± 0.23) 1.900 ± .009	4 , 5 16 , 17									
	19	(48.26 / 47.80) 1.900 / 1.882	(45.72 ± 0.23) 1.800 ± .009	4 , 5 16 , 17									
E	18	(45.72 / 45.31) 1.800 / 1.784	(43.18 ± 0.20) 1.700 ± .008	4 , 5 12 , 13									
D	17	(43.18 / 42.77) 1.700 / 1.684	(40.64 ± 0.20) 1.600 ± .008	4 , 5 12 , 13									
C	16	(40.64 / 40.23) 1.600 / 1.584	(38.10 ± 0.20) 1.500 ± .008	4 , 5 12 , 13									
B	15	(38.10 / 37.69) 1.500 / 1.484	(35.56 ± 0.20) 1.400 ± .008	4 , 5 12 , 13									
A	14	(35.56 / 35.20) 1.400 / 1.386	(33.02 ± 0.18) 1.300 ± .007	4 , 5 8 , 9									
	13	(33.02 / 32.66) 1.300 / 1.286	(30.48 ± 0.18) 1.200 ± .007	4 , 5 8 , 9									
	12	(30.48 / 30.12) 1.200 / 1.186	(27.94 ± 0.18) 1.100 ± .007	4 , 5 8 , 9									
	11	(27.94 / 27.58) 1.100 / 1.086	(25.40 ± 0.18) 1.000 ± .007	4 , 5 8 , 9									
	10	(25.40 / 25.04) 1.000 / .986	(22.86 ± 0.15) .900 ± .006	4 , 5									
	9	(22.86 / 22.50) .900 / .886	(20.32 ± 0.15) .800 ± .006	4 , 5									
	8	(20.32 / 19.96) .800 / .786	(17.78 ± 0.15) .700 ± .006	4 , 5									
	7	(17.78 / 17.42) .700 / .686	(15.24 ± 0.13) .600 ± .005	4 , 5									
	6	(15.24 / 14.88) .600 / .586	(12.70 ± 0.13) .500 ± .005	4 , 5									
	5	(12.70 / 12.40) .500 / .488	(10.16 ± 0.13) .400 ± .005	NONE									
	4	(10.16 / 9.86) .400 / .388	(7.62 ± 0.13) .300 ± .005	NONE									
	3	(7.62 / 7.32) .300 / .288	(5.08 ± 0.10) .200 ± .004	NONE									
	2	(5.08 / 4.78) .200 / .188	(2.54 ± 0.05) .100 ± .002	NONE									

NOTES:

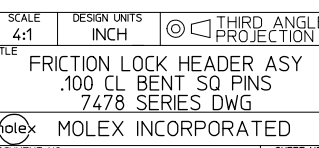
- MATERIAL: NYLON, UL94V-0, COLOR WHITE
- FINISH:
 - (102) - OVERALL TIN: (0.00508)/.000200 MIN., OVERALL COPPER UNDERPLATE: (0.00254)/.000100 MIN.
 - (154) - OVERALL TIN: (0.00254)/.000100 MIN., OVERALL NICKEL UNDERPLATE: (0.00127)/.000050 MIN.
 - (501) - OVERALL GOLD: (0.00051)/.000020 MIN., OVERALL NICKEL UNDERPLATE: (0.00076)/.000030 MIN.
 - (503) - OVERALL GOLD: (0.00076)/.000030 MIN., OVERALL NICKEL UNDERPLATE: (0.00127)/.000050 MIN.
 - (531) - OVERALL GOLD: (0.00038)/.000015 MIN., OVERALL NICKEL UNDERPLATE: (0.00076)/.000030 MIN.
- PARTS CONFORM TO PRODUCT SPECIFICATION PS-10-07.
- PACKAGING INFORMATION: SEE LEGEND.
- PARTS ARE STACKABLE END TO END ON (2.54)/.100 CENTERS.
- PIN PUSH OUT FORCE: 2 LBS. MIN.
- CIRCUIT ONE DESIGNATION IS USED TO DEFINE VOID LOCATION. CIRCUIT ONE MAY OR MAY NOT LINE UP WITH CIRCUIT ONE ON THE HOUSING.
- THIS PART CONFORMS TO CLASS B REQUIREMENTS OF COSMETIC SPECIFICATION PS-45499-002.



SECONDARY OPERATIONS	
CODE	PACKAGE
BLANK	BULK PK-7478-001
T	TUBE PER PK-44743-001

A-7478-N***
 NO. OF CKTS. →
 VERSION LETTER CHANGES WHEN PIN NO. OR PRESS DIM. CHANGES
 PLATING SEE NOTE 2

RECOMMENDED P.C. BOARD HOLE LAYOUT



REMOVE ES-42003 EC NO. UCP2009-0359 DRAWING: GAVRILL 2008/08/12 CHK: CHOKKI PPR 2008/08/14 APPR: ESMITH 2008/08/14	QUALITY SYMBOLS ▽=0 ▽=0	GENERAL TOLERANCES (UNLESS SPECIFIED): mm INCH 4 PLACES ±.010 ±.004 3 PLACES ±.015 ±.005 2 PLACES ±.025 ±.015 1 PLACE ±.038 ±.015 ANGULAR ±1/2°	DIMENSION STYLE: MM/IN DRAWN BY: GUZIC DATE: 1987/07/30 CHECKED BY: PATEL DATE: 1987/07/30 APPROVED BY: LENZ DATE: 1987/07/30	SCALE: 4:1 DESIGN UNITS: INCH THIRD ANGLE PROJECTION
		DRAFT WHERE APPLICABLE MUST REMAIN WITHIN DIMENSIONS	SEE CHART	MATERIAL NO.: SDA-7478 DOCUMENT NO.: SDA-7478 SHEET NO.: 1 OF 7

		13	12	11	10	9	8	7	6	5	4	3	2	1												
J	ENG. NO.	PIN NO.	DIM. L	DIM. X	DIM. Z	DIM. Y	DIM. W	DIM. R								ENG. NO.	PIN NO.	DIM. L	DIM. X	DIM. Z	DIM. Y	DIM. W	DIM. T	J		
	A	A-7478-NA I02	2766-4 (I02)	(18.69) .736	(6.60) .260	(3.58) .141	(3.05) .120	90°	(1.17) .046																	
I	A-7478-NA50I	2766-4 (K50 I)	(18.69) .736	(6.60) .260	(3.58) .141	(3.05) .120	90°	(1.17) .046																		
I	A-7478-NA50IT	2766-4 (K50 I)	(18.69) .736	(6.60) .260	(3.58) .141	(3.05) .120	90°	(1.17) .046																		
I	A-7478-NA I02T	2766-4 (I02)	(18.69) .736	(6.60) .260	(3.58) .141	(3.05) .120	90°	(1.17) .046																		
H																										
H																										
G																										
G																										
F																										
F																										
E																										
E																										
D																										
D																										
C																										
C																										
B								ADD A-7478-NA I02T SEC NO: UCP2006-1815 2006/02/06 DRW: WADERR 2006/02/06 CHK: BELHAG 2006/02/06 APPR: SMITH 2006/02/09		QUALITY SYMBOLS ▽=0 ▽=0	GENERAL TOLERANCES (UNLESS SPECIFIED) 4 PLACES ±--- ±--- 3 PLACES ±--- ±--- 2 PLACES ±--- ±--- 1 PLACE ±--- ±--- ANGULAR ±---°	DIMENSION STYLE IN/MM DRAWN BY SUZIK DATE 1987/07/10 CHECKED BY DATE PATEL 1987/07/10 APPROVED BY LENZ DATE 1987/07/10	SCALE --- DESIGN UNITS INCH THIRD ANGLE PROJECTION	TITLE FRICTION LOCK HEADER ASY .100 CL BENT SQ PINS 7478 SERIES DWG	MATERIAL NO. SEE CHART	DOCUMENT NO. SDA-7478	SHEET NO. 2 OF 7	MOLEX INCORPORATED THIS DRAWING CONTAINS INFORMATION THAT IS PROPRIETARY TO MOLEX INCORPORATED AND SHOULD NOT BE USED WITHOUT WRITTEN PERMISSION	B							
A								DRAFT WHERE APPLICABLE MUST REMAIN WITHIN DIMENSIONS		SIZE C								A								

tb_frame_C_P_ME_T
Rev. D 2004/04/02

	13	12	11	10	9	8	7	6	5	4	3	2	1																										
	A-7478-NA I02		A-7478-NA50 I		A-7478-NA50 I T		A-7478-NA I02 T																																
J	PART NO.	ENG. NO.	PART NO.	ENG. NO.	PART NO.	ENG. NO.	PART NO.	ENG. NO.	PART NO.	ENG. NO.	PART NO.	ENG. NO.	PART NO.	ENG. NO.																									
	22-05-3021	A-7478-2A I02	22-12-2024	A-7478-2A50 I	50-29-1710	A-7478-2A50 I T	50-34-8500	A-7478-2A I02 T																															
	22-05-3031	A-7478-3A I02	22-12-2034	A-7478-3A50 I	50-29-1711	A-7478-3A50 I T	50-34-8501	A-7478-3A I02 T																															
	22-05-3041	A-7478-4A I02	22-12-2044	A-7478-4A50 I	50-29-1705	A-7478-4A50 I T	50-34-8502	A-7478-4A I02 T																															
I	22-05-3051	A-7478-5A I02	22-12-2054	A-7478-5A50 I	50-29-1712	A-7478-5A50 I T																																	
	22-05-3061	A-7478-6A I02	22-12-2064	A-7478-6A50 I	50-29-1713	A-7478-6A50 I T																																	
	22-05-3071	A-7478-7A I02	22-12-2074	A-7478-7A50 I	50-29-1714	A-7478-7A50 I T																																	
	22-05-3081	A-7478-8A I02	22-12-2084	A-7478-8A50 I	50-29-1715	A-7478-8A50 I T																																	
H	22-05-3091	A-7478-9A I02	22-12-2094	A-7478-9A50 I	50-29-1716	A-7478-9A50 I T																																	
	22-05-3101	A-7478-10A I02	22-12-2104	A-7478-10A50 I	50-29-1717	A-7478-10A50 I T																																	
	22-05-3111	A-7478-11A I02	22-12-2114	A-7478-11A50 I	50-29-1718	A-7478-11A50 I T																																	
	22-05-3121	A-7478-12A I02	22-12-2124	A-7478-12A50 I	50-29-1719	A-7478-12A50 I T																																	
	22-05-3131	A-7478-13A I02	22-12-2134	A-7478-13A50 I	50-29-1720	A-7478-13A50 I T																																	
	22-05-3141	A-7478-14A I02	22-12-2144	A-7478-14A50 I	50-29-1721	A-7478-14A50 I T																																	
G	22-05-3151	A-7478-15A I02	22-12-2154	A-7478-15A50 I	50-29-1722	A-7478-15A50 I T																																	
	22-05-3161	A-7478-16A I02	22-12-2164	A-7478-16A50 I	50-29-1723	A-7478-16A50 I T																																	
	22-05-3171	A-7478-17A I02	22-12-2174	A-7478-17A50 I	50-29-1724	A-7478-17A50 I T																																	
	22-05-3181	A-7478-18A I02	22-12-2184	A-7478-18A50 I	50-29-1725	A-7478-18A50 I T																																	
	22-05-3191	A-7478-19A I02	22-12-2194	A-7478-19A50 I	50-29-1726	A-7478-19A50 I T																																	
F	22-05-3201	A-7478-20A I02	22-12-2204	A-7478-20A50 I	50-29-1727	A-7478-20A50 I T																																	
	22-05-3211	A-7478-21A I02	22-12-2214	A-7478-21A50 I	50-29-1728	A-7478-21A50 I T																																	
	22-05-3221	A-7478-22A I02	22-12-2224	A-7478-22A50 I	50-29-1729	A-7478-22A50 I T																																	
	22-05-3231	A-7478-23A I02	22-12-2234	A-7478-23A50 I	50-29-1730	A-7478-23A50 I T																																	
	22-05-3241	A-7478-24A I02	22-12-2244	A-7478-24A50 I	50-29-1731	A-7478-24A50 I T																																	
	22-05-3251	A-7478-25A I02	22-12-2254	A-7478-25A50 I	50-29-1732	A-7478-25A50 I T																																	
	22-05-3261	A-7478-26A I02	22-12-2264	A-7478-26A50 I	50-29-1733	A-7478-26A50 I T																																	
E	22-05-3271	A-7478-27A I02	22-12-2274	A-7478-27A50 I	50-29-1734	A-7478-27A50 I T																																	
	22-05-3281	A-7478-28A I02	22-12-2284	A-7478-28A50 I	50-29-1735	A-7478-28A50 I T																																	
D																																							
C																																							
B																																							
A																																							
	ADD PINS EC NO. UCP2006-1815 2006/02/06 DRW:ADBR 2006/02/06 CHK:BELHAG 2006/02/06 APP:FSMTH 2006/02/09 REV DESCRIPTION		QUALITY SYMBOLS ▽=0 ▽=0		GENERAL TOLERANCES (UNLESS SPECIFIED) <table border="1"> <tr> <td></td> <td>mm</td> <td>INCH</td> </tr> <tr> <td>4 PLACES</td> <td>± .005</td> <td>± .0004</td> </tr> <tr> <td>3 PLACES</td> <td>± .008</td> <td>± .0006</td> </tr> <tr> <td>2 PLACES</td> <td>± .012</td> <td>± .0008</td> </tr> <tr> <td>1 PLACE</td> <td>± .015</td> <td>± .0010</td> </tr> <tr> <td colspan="3">ANGULAR ± .005°</td> </tr> </table>			mm	INCH	4 PLACES	± .005	± .0004	3 PLACES	± .008	± .0006	2 PLACES	± .012	± .0008	1 PLACE	± .015	± .0010	ANGULAR ± .005°			DIMENSION STYLE IN/MM		SCALE ---	DESIGN UNITS INCH	THIRD ANGLE PROJECTION										
	mm	INCH																																					
4 PLACES	± .005	± .0004																																					
3 PLACES	± .008	± .0006																																					
2 PLACES	± .012	± .0008																																					
1 PLACE	± .015	± .0010																																					
ANGULAR ± .005°																																							
DRAWN BY SUZIK		DATE 1987/07/10		TITLE FRICTION LOCK HEADER ASY .100 CL BENT SQ PINS 7478 SERIES DWG.		CHECKED BY PATEL		DATE 1987/07/10		APPROVED BY LENZ		DATE 1987/07/10		MATERIAL NO. SEE CHART		DOCUMENT NO. SDA-7478		SHEET NO. 3 OF 7																					
DRAFT WHERE APPLICABLE MUST REMAIN WITHIN DIMENSIONS																				THIS DRAWING CONTAINS INFORMATION THAT IS PROPRIETARY TO MOLEX INCORPORATED AND SHOULD NOT BE USED WITHOUT WRITTEN PERMISSION																			