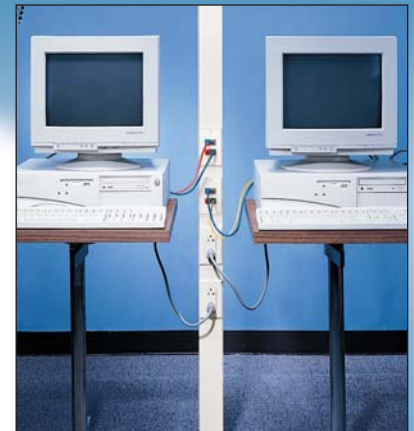


PAN-WAY® PAN-POLE™ **Aluminum Outlet Poles for Power & Communication**

The Aluminum Outlet Poles shall be an aluminum channel with a cross sectional area of 2.90" x 1.77", available in 11 or 13 foot lengths in two standard colors. The Power and Communication Pole shall consist of two compartments and be UL-5 listed and CSA certified to 600V. The pole shall be supplied with a power entry box with 1/2 conduit breakouts and 8" removable plate. One compartment shall be factory wired with two duplex style 20A, 125V NEMA 5-20R grounding-type specification grade receptacles and the second compartment left blank for field installation of telephone, data network or other low voltage cabling. The Communications Only Pole shall consist of one compartment for field installation of telephone, data network or other low voltage cabling. Both pole versions shall be capable of accepting 70mm snap-on faceplates as well as NEMA standard screw mount faceplates and be provided with non-metallic 70mm (2.75") cover, 1" bend radius entry fitting and t-bar mounting bracket, ceiling trim plates and floor end cap with grip pad.



Key Features

Benefits

1" bend radius control	Cables will not exceed the minimum 1" bend radius requirement and degrade performance Meets TIA/EIA standard and many warranty requirements
Dual channel aluminum construction	Provides complete separation of power and data which eliminates the need for two poles
Non-metallic cover	Tamper resistant yet allows access to installer for easy moves, adds and changes; reduces cost to install and is easy to cut and modify
Accepts PAN-WAY® Snap-on Faceplates	Eliminates need for screw-on faceplates and allows for customized placement of data outlets
UL5A/CSA Listed	Meets the latest UL/CSA listing requirements
Available in two colors	Matches a variety of decors
Optimized for use with PAN-NET® Connectivity System Network	Provides a complete network cabling solution

Technical Information

Materials:	Aluminum Base/PVC Cover
Approvals:	UL & CSA Rated to 600V
Color:	International White (IW) or Electric Ivory (EI)

Ordering Information

Part Number	Part Description	Std. Pkg. Color	Qty.
PAN-POLE™ Power and Communication Pole			
PCPA13R20IW	Power/Communications Pole	Off White	1
PCPA11R20IW	Power/Communications Pole	Off White	1
PAN-POLE™ Communication Pole			
PCPA11IW	Communication Pole	Off White	1
PCPA13IW	Communication Pole	Off White	1
PAN-POLE™ Power Pole Extension Kits			
PCPAK22IW	Extension Kit to extend the 11' power pole to 22'	Off White	1
PCPAK16IW	Extension Kit to extend the 13' power pole to 16'	Off White	1
PAN-POLE™ Power Addition Kits & Standard Faceplate Bracket			
PCPAKR20IW	Power Addition Kit with 20A rectangular outlet	Off White	1
PCPAKR1W	Power Addition Kit without 20A rectangular outlet	Off White	1
T70SDB-X	Standard Faceplate Bracket	Gray	1
PAN-POLE™ Aluminum Outlet Pole Replacement Parts			
PCPKITIW	Replacement kit	Off White	1
PCPTPIW	Replacement ceiling trim plate	Off White	1
PCPECIW	Replacement end cap with floor grip pad	Off White	1
PCPBRC	Replacement bend radius control ramp with T-bar bracket	Gray	1

Communication components sold separately. For other colors, replace IW (Off white) with EI (Electric Ivory).

PAN-WAY® PAN-POLE™

Aluminum Outlet Poles for Power & Communication

Fill Capacity

Raceway Type & Configuration	Fill Area (in ²)	Electrical Cables			Data Grade Cables		Data Grade Cables		Coax Cable		Fiber Optic Cable	
		14 AWG	12 AWG	10 AWG	24 AWG/ UTP CM	24 AWG/ UTP CM	RG6	2 Strand				
		THHN/T90			Cat 5e (4pr)	Cat6 (4pr)						
		.105	.122	.153	DIA. = .217	DIA. = .250	DIA. = .275		DIA. = .175			
		FILL			FILL		FILL		FILL		FILL	
		MAX	MAX	MAX	SPEC	MAX	SPEC	MAX	SPEC	MAX	SPEC	MAX
		(UL Temp Rise Test)			(40%)	(60%)	(40%)	(60%)	(40%)	(60%)	(40%)	(60%)
Power & Comm: Snap-on Faceplates (Power)	.47	–	11	–	–	–	–	–	2	4	–	–
Communication	2.75	–	–	–	30	45	22	33	15	22	46	69
Power & Comm: Screw-on Faceplates (Power)	.43	–	11	–	–	–	–	–	2	3	–	–
Communication	2.15	–	–	–	23	35	17	26	11	17	36	54
Communication Only: Snap-on Faceplates	3.47	–	–	–	38	57	28	42	18	28	58	87
Communication Only: Screw-on Faceplates	2.83	–	–	–	31	46	23	34	15	22	48	72

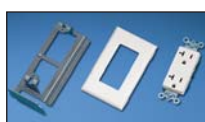
Related Products



PAN-POLE™ Power Pole Extension Kits

PAN-POLE™ Power Pole Extension Kits include a fully assembled 11' or 3' power pole with brace/ coupler,

additional wing and screws. Customer needs to purchase separate standard 11' or 13' pole to make the required 16' or 22' length.



PAN-POLE™ Power Addition Kits & Standard Faceplate Brackets

PAN-POLE™ Power Addition Kits (UL

Listed for field installation) provide for the addition of power outlets to the Power and Communication Pole. This allows for the installation of up to three additional duplex outlets for a total of five.

The Standard Faceplate Bracket (for data) is used to mount NEMA standard single gang screw-on communication faceplates (not for use with snap-on faceplates)



PAN-POLE™ Aluminum Outlet Pole Replacement Parts

PAN-POLE™ Replacement Parts Kit includes bend radius control ramp with two screws,

T-bar brackets with one thumbscrew, one ceiling trim plate, two pieces, and one end cap with floor grip pad. Replacement ceiling trim plates, end caps with floor grip pads and bend radius control ramp with T-bar bracket are also available individually.

WORLDWIDE SUBSIDIARIES AND SALES OFFICES

PANDUIT CANADA
Markham, Ontario
Phone: 800.777.3300

PANDUIT EUROPE LTD.
London, UK
Phone: 44.208.601.7200

PANDUIT ASIA PACIFIC PTE. LTD.
Republic of Singapore
Phone: 65.6379.6700

PANDUIT JAPAN
Tokyo, Japan
Phone: 81.3.3767.7011

PANDUIT LATIN AMERICA
Jalisco, Mexico
Phone: 52.333.666.2501

PANDUIT AUSTRALIA PTY. LTD.
Victoria, Australia
Phone: 61.3.9794.9020

For a copy of PANDUIT product warranties, log on to www.panduit.com/warranty



For more information or to request a catalog

800-777-3300

cs@panduit.com

www.panduit.com

Copyright © PANDUIT Corp. All rights reserved.
Printed in U.S.A.

WW-SRCB03

04/2004