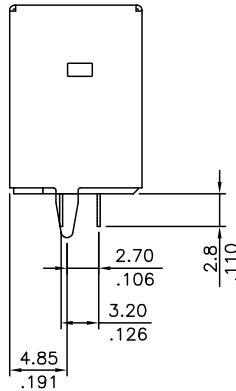
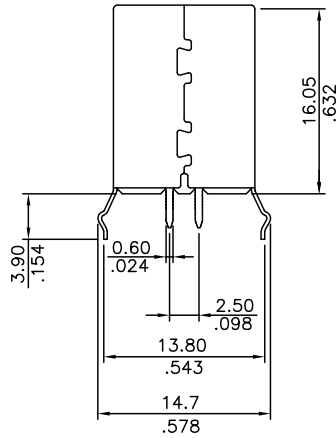


Recommended P.C. Board Layout



SIGN	DATE	DESCRIPTION	APPROVER
THIS IS CAD DRAWING, DO NOT REVISE MANUALLY!!!			

Material

- Insulator: Glass Filled Polyester
- Flammability: UL94V-0
- Contacts: Phosphor Bronze
- Contact Plating: See options
- Shell: Brass
- Shell Plating: 100u" Min. Tin over 40u" Nickel

RATINGS

- Current: 1A
- Voltage: 30V AC(r.m.s.)
- Dielectric Voltage: 750V AC
- Contact Resistance: $\leq 30m\Omega$
- Insulation Resistance: >1,000 MΩ
- Operating Temperature: 0° - +40°
- Storage Temperature: -40° - +60°

RoHS Compliant

PART NUMBER:

USB-B1VSXX

- COLOR: PLATING:
- B: Black 6: Selective Gold Flash (Std.)
 - W: White 8: Selective 30u" Gold



THESE DRAWINGS AND SPECIFICATIONS ARE THE PROPERTY OF ON-SHORE TECHNOLOGY, INC. AND SHALL NOT BE REPRODUCED, COPIED OR USED IN ANY MANNER WITHOUT THE PRIOR WRITTEN CONSENT OF ON-SHORE TECHNOLOGY, INC.

TITLE		USB - B type, Vertical, thru hole				
PART NO.		USB-B1VSXX		DWG NO.		USB-B1VSXX.DWG
APPROVED		CHECKED	DESIGNED	DRAWN		4050
Steven 2007.03.30	Marvin 2007.03.30	Marvin 2007.03.30	Marvin 2007.03.30			Tolerance
						UNIT: mm/inches
						SCALE: NONE
						X* ±1"
						XXX ±0.30/.012
						XXXX ±0.20/.008
						XXXX ±0.10/.004
SHEET: 01/01						REV: A