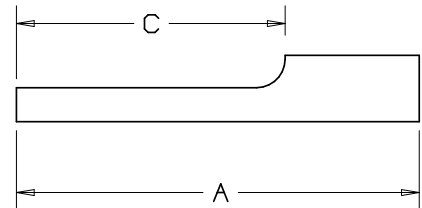
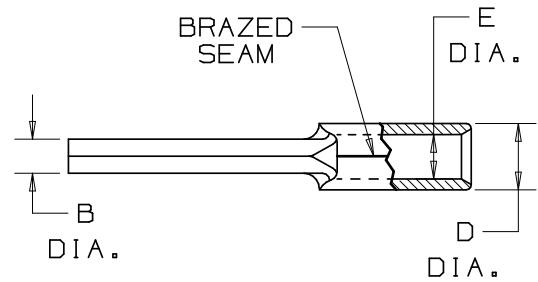


THIS COPY IS PROVIDED ON A RESTRICTED BASIS AND IS NOT TO BE USED IN ANY WAY DETRIMENTAL TO THE INTERESTS OF PANDUIT CORP.

PANDUIT PART NUMBER	WIRE SIZE AWG (mm ²)	DIMENSIONS in.				
		±.020 A (±.5)	±.010(±.3) B DIA.	±.015 C (±.4)	±.010(±.3) D DIA.	±.010(±.3) E DIA.
P18-P47 *	22-18 (.5-1.5)	.75 (19.1)	.07 (1.8)	.49 (12.4)	.14 (3.6)	.06 (1.5)
P14-P47 *	18-14 (2.0-2.5)	.75 (19.1)	.07 (1.8)	.49 (12.4)	.16 (4.1)	.08 (2.0)
P10-P55	12-10 (4.0-6.0)	.79 (20.1)	.11 (2.8)	.55 (14.0)	.22 (5.6)	.15 (3.8)

NOTES:

- RECOMMENDED FOR:
A. SOLID OR STRANDED COPPER WIRE
- MATERIAL:
A. STAMPING - COPPER, TIN PLATED
- PACKAGE QTY: STD. PKG. -C=100
BULK PKG. -M=1000
- DIMENSIONS IN BRACKETS ARE IN mm or mm²
- INSTALLATION TOOLS:
A. PANDUIT APPROVED: CT-100, CT-160, CT-200,
CT-260, CT-1570,
- WIRE STRIP LENGTH: $9/32^{+1/32}_{-0}$ (7.1^{+0.8}₋₀)



RU

* RECOGNIZED
E52164

5	6/06	DAW	DAW	ADDED UL RECOGNIZED MARKING FOR P18-P47 AND P14-P47	TR00142					A41334_05	
4	1/01	EJS	SKB	REMOVED CT-570 FROM TOOL LIST, "A" TOL. WAS .8	08993	--	--				
3	2/99	WB	SKB	UPDATED NOTES & DIMENSIONS	07530	JCJ	TRO				
2	3-95	MS	RS	UPDATED NOTES AND DIMENSIONS	03123	LA	KS				
1	9-88	DW	RJT	REDRAWN WITH REVISIONS							
REV	DATE	BY	CHK	DESCRIPTION	ECN #	CUST	PM	DRAWN BY DAW	CHK'D RLS	SCALE NONE	DRAWING NO. A41334

PANDUIT

CORP.

TINLEY PARK, ILLINOIS

NON-INSULATED PIN TERMINAL