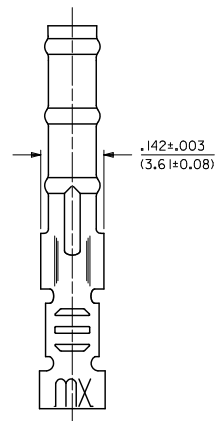
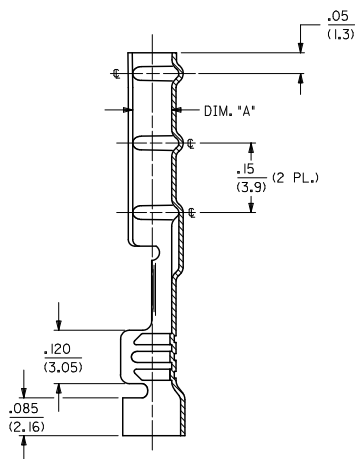
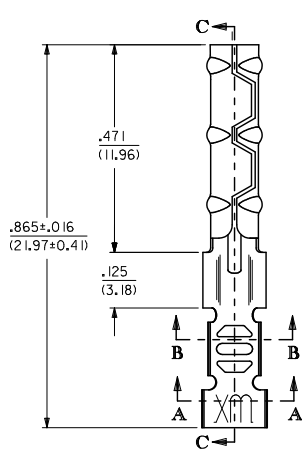
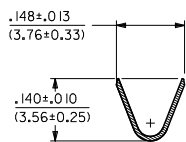


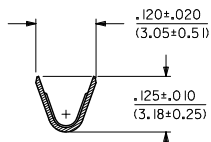
1881-2*** TERMINAL SHOWN (16-24 AWC)
SEE SHEET 2 FOR 1881-3*** TERMINAL



SECTION C-C



SECTION A-A



SECTION B-B

UPDATE REV. LEVELS	DESCRIPTION
EC NO. UCP2011-3131	
DRW: AELHAG 2011/04/11	
CHKD: JBELL 2011/04/11	
APPR: SSMITH 2011/05/23	
REV	

QUALITY SYMBOLS	DESCRIPTION
▽=0	
▽=0	

GENERAL TOLERANCES (UNLESS SPECIFIED)		
	mm	INCH
4 PLACES	±.005	±.0005
3 PLACES	±.010	±.0010
2 PLACES	±0.25	±.014
1 PLACE	±0.36	±.014
ANGULAR ±1/2°		
DRAFT WHERE APPLICABLE MUST REMAIN WITHIN DIMENSIONS		

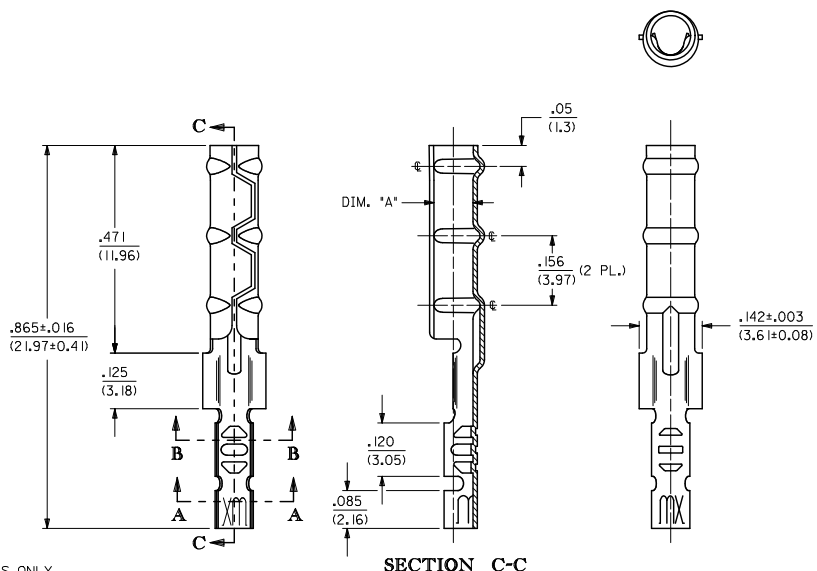
DIMENSION STYLE		SCALE	DESIGN UNITS	THIRD ANGLE PROJECTION
IN/MM		6:1	INCH	☐
DRAWN BY	DATE	TITLE		
AELHAG	2011/04/11	CRIMP TERMINAL SOCKET, CLASP CON		
CHECKED BY	DATE	MATERIAL NO.		
JBELL	2011/04/11	SEE CHART		
APPROVED BY	DATE	DOCUMENT NO.		
		SD-1881-*		

MATERIAL NO.		SD-1881-*	SHEET NO.
DOCUMENT NO.		SD-1881-*	1 OF 2
THIS DRAWING CONTAINS INFORMATION THAT IS PROPRIETARY TO MOLEX INCORPORATED AND SHOULD NOT BE USED WITHOUT WRITTEN PERMISSION			

2	L2
1	L2
SHT/REV	

CHART			
PART NUMBER	ENG. NUMBER	DIMENSION "A" (DIA.)	INTERLEAF PAPER OPTION
02-08-1102	1881-2L1A	.085/.090 (2.16/2.29)	YES
02-08-1101	1881-2C1A		
02-08-5101	1881-2C1A-I		
02-08-1106	1881-2L1B	.083/.088 (2.11/2.24)	OBSOLETE
02-08-1105	1881-2C1B		OBSOLETE
02-08-1104	1881-3L1A	.085/.090 (2.16/2.29)	
02-08-1103	1881-3C1A		
02-08-1107	1881-4C1A	.085/.090 (2.16/2.29)	OBSOLETE
02-08-1108	1881-4L1A		OBSOLETE

1881-3*** TERMINAL SHOWN (24-30 AWG)
SEE SHEET 1 FOR 1881-2*** TERMINAL



LEGEND

1881-***-*

CRIMP STYLE
2 = 16-24 AWG
3 = 24-30 AWG
4 = 22 AWG

FORM
L = LOOSE
C = CHAIN

INTERLEAF PAPER OPTION
BLANK : INTERLEAF PAPER ON FIRST FEW WRAPS ONLY.
I : INTERLEAF PAPER THROUGH OUT REEL.

BARREL I.D.
A = .085/.090 BARREL I.D.

FINISH
(*P* PRECEEDING FINISH NO. DESIGNATES PREPLATED MATERIAL)
1 = P901 - HOT TIN DIP. .000020/(0.0005) MIN.

- NOTES:
- MATERIAL: CARTRIDGE BRASS
 - FINISH: SEE LEGEND
 - PRODUCT SPECIFICATION: N/A
 - PACKAGING SPECIFICATION: N/A
 - 1881 "CLASPCON" SERIES TERMINAL WITH THE STANDARD BARREL I.D. IS INTENDED FOR MATING TO .093/(2.36) DIA. P.C. BOARD PINS.
 - INITIAL EXTRACTION FORCE TO BE 4.0±1.5 LBS. FROM AN .093/.092 / (2.36/2.34) DIA. PIN AND 2 LBS. MIN. AFTER THE 10TH EXTRACTION ON STANDARD BARREL I.D.

ADD P/N 02-08-5101 EC NO. UCP2011-3131 DRW: AELHAG 2011/04/11 CHKD: JBELL 2011/04/11 APPR: ESMTLH 2011/05/23 REV	QUALITY SYMBOLS	GENERAL TOLERANCES (UNLESS SPECIFIED)		DIMENSION STYLE	SCALE	DESIGN UNITS	THIRD ANGLE PROJECTION	
	▽=0	mm	INCH	IN/MM	6:1	INCH		
	▽=0	4 PLACES ±.010	±.010	DRAWN BY	DATE	TITLE		
		3 PLACES ±.014	±.014	AELHAG	2011/04/11	CRIMP TERMINAL SOCKET, CLASPCON		
	2 PLACES ±0.25	±.014	CHECKED BY	DATE				
	1 PLACE ±0.36	±.014	JBELL	2011/04/11				
		±.014	APPROVED BY	DATE				
		ANGULAR ±1/2°						
			DRAFT WHERE APPLICABLE MUST REMAIN WITHIN DIMENSIONS		MATERIAL NO.	DOCUMENT NO.	SHEET NO.	
			SEE CHART			SD-1881-*	2 OF 2	
			THIS DRAWING CONTAINS INFORMATION THAT IS PROPRIETARY TO MOLEX INCORPORATED AND SHOULD NOT BE USED WITHOUT WRITTEN PERMISSION					