

**PART NUMBER CODING**  
**SBH51-LP E-D -S -BK**

**TERMINATION**

M= SURFACE MOUNT W/O GUIDE POSTS

P= SURFACE MOUNT W/ GUIDE POSTS

**NUMBER OF POSITIONS**

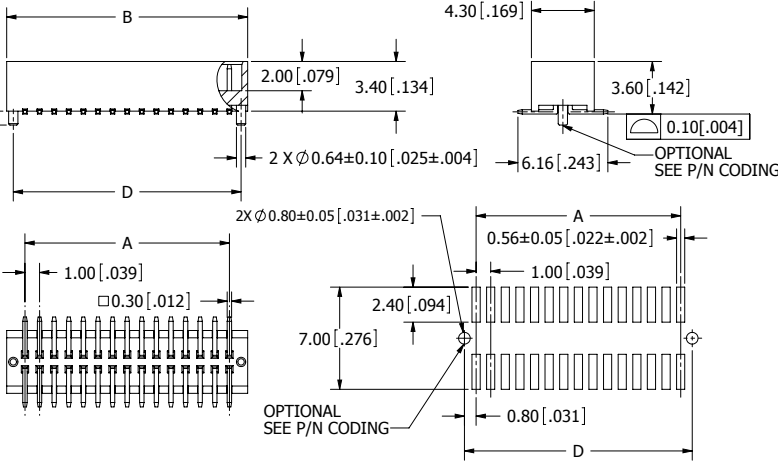
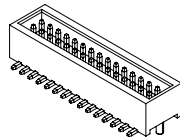
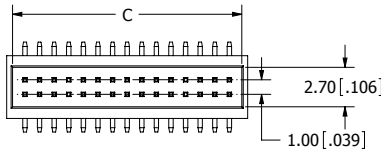
(CONTACTS PER ROW, 03 THRU 50)

**PLATING**

.000030" - .000050" NICKEL UNDERPLATE,

P= GOLD FLASH OVERALL

S= .000010" GOLD OVERALL



**RECOMMENDED PCB LAYOUT**

- NOTES:**
1. INSULATOR MATERIAL: LCP, UL 94V-0, BLACK.
  2. CONTACT MATERIAL: PHOSPHOR BRONZE.
  3. CONTACT PLATING: SEE PART NUMBER CODING.
  4. CURRENT RATING: 1 AMP PER CONTACT.
  5. INSULATOR RESISTANCE: 1000 MEGA OHMS MIN.
  6. CONTACT RESISTANCE: 20 MILLIOHMS MAX.
  7. DIELECTRIC WITHSTANDING: 300V AC.
  8. OPERATING TEMPERATURE: -40° C TO +125° C.
  9. \*PROCESSING TEMP.: 230° C FOR 60 SECS MAX.  
(260° C FOR 10 SECS MAX.)
  10. MATES WITH SFM210 SERIES.

\*INDICATED TEMPERATURE AND TIME IS FOR COMPONENT INSULATOR. HIGHER PROCESSING TEMPERATURES MAY BE USED, PROVIDED HEAT IS APPLIED FROM BACK SIDE OF PCB, AND INSULATOR DOES NOT EXCEED INDICATED TEMPERATURE AND TIME.



RoHS COMPLIANT

REVISIONS				
REV.	ECO. NO	DESCRIPTION	DATE	BY
A	2364	INITIAL RELEASE	06/08/2011	LH

PART NUMBER	POSITIONS/CONTACTS	A		B		C		D	
		INCH	MM	INCH	MM	INCH	MM	INCH	MM
SBH51-LP E-D03-S -BK	03/06	0.079	2.00	0.079	4.50	0.177	3.70	0.146	3.60
SBH51-LP E-D04-S -BK	04/08	0.118	3.00	0.118	5.50	0.217	4.70	0.185	4.60
SBH51-LP E-D05-S -BK	05/10	0.157	4.00	0.157	6.50	0.256	5.70	0.224	5.60
SBH51-LP E-D06-S -BK	06/12	0.197	5.00	0.197	7.50	0.295	6.70	0.264	6.60
SBH51-LP E-D07-S -BK	07/14	0.236	6.00	0.236	8.50	0.335	7.70	0.303	7.60
SBH51-LP E-D08-S -BK	08/16	0.276	7.00	0.276	9.50	0.374	8.70	0.343	8.60
SBH51-LP E-D09-S -BK	09/18	0.315	8.00	0.315	10.50	0.413	9.70	0.382	9.60
SBH51-LP E-D10-S -BK	10/20	0.354	9.00	0.354	11.50	0.453	10.70	0.421	10.60
SBH51-LP E-D11-S -BK	11/22	0.394	10.00	0.394	12.50	0.492	11.70	0.461	11.60
SBH51-LP E-D12-S -BK	12/24	0.433	11.00	0.433	13.50	0.531	12.70	0.500	12.60
SBH51-LP E-D13-S -BK	13/26	0.472	12.00	0.472	14.50	0.571	13.70	0.539	13.60
SBH51-LP E-D14-S -BK	14/28	0.512	13.00	0.512	15.50	0.610	14.70	0.579	14.60
SBH51-LP E-D15-S -BK	15/30	0.551	14.00	0.551	16.50	0.650	15.70	0.618	15.60
SBH51-LP E-D16-S -BK	16/32	0.591	15.00	0.591	17.50	0.689	16.70	0.657	16.60
SBH51-LP E-D17-S -BK	17/34	0.630	16.00	0.630	18.50	0.728	17.70	0.697	17.60
SBH51-LP E-D18-S -BK	18/36	0.669	17.00	0.669	19.50	0.768	18.70	0.736	18.60
SBH51-LP E-D19-S -BK	19/38	0.709	18.00	0.709	20.50	0.807	19.70	0.776	19.60
SBH51-LP E-D20-S -BK	20/40	0.748	19.00	0.748	21.50	0.846	20.70	0.815	20.60
SBH51-LP E-D21-S -BK	21/42	0.787	20.00	0.787	22.50	0.886	21.70	0.854	21.60
SBH51-LP E-D22-S -BK	22/44	0.827	21.00	0.827	23.50	0.925	22.70	0.894	22.60
SBH51-LP E-D23-S -BK	23/46	0.866	22.00	0.866	24.50	0.965	23.70	0.933	23.60
SBH51-LP E-D24-S -BK	24/48	0.906	23.00	0.906	25.50	1.004	24.70	0.972	24.60
SBH51-LP E-D25-S -BK	25/50	0.945	24.00	0.945	26.50	1.043	25.70	1.012	25.60
SBH51-LP E-D26-S -BK	26/52	0.984	25.00	0.984	27.50	1.083	26.70	1.051	26.60
SBH51-LP E-D27-S -BK	27/54	1.024	26.00	1.024	28.50	1.122	27.70	1.091	27.60
SBH51-LP E-D28-S -BK	28/56	1.063	27.00	1.063	29.50	1.161	28.70	1.130	28.60
SBH51-LP E-D29-S -BK	29/58	1.102	28.00	1.102	30.50	1.201	29.70	1.169	29.60
SBH51-LP E-D30-S -BK	30/60	1.142	29.00	1.142	31.50	1.240	30.70	1.209	30.60
SBH51-LP E-D31-S -BK	31/62	1.181	30.00	1.181	32.50	1.280	31.70	1.248	31.60
SBH51-LP E-D32-S -BK	32/64	1.220	31.00	1.220	33.50	1.319	32.70	1.287	32.60
SBH51-LP E-D33-S -BK	33/66	1.260	32.00	1.260	34.50	1.358	33.70	1.327	33.60
SBH51-LP E-D34-S -BK	34/68	1.299	33.00	1.299	35.50	1.398	34.70	1.366	34.60
SBH51-LP E-D35-S -BK	35/70	1.339	34.00	1.339	36.50	1.437	35.70	1.406	35.60
SBH51-LP E-D36-S -BK	36/72	1.378	35.00	1.378	37.50	1.476	36.70	1.445	36.60
SBH51-LP E-D37-S -BK	37/74	1.417	36.00	1.417	38.50	1.516	37.70	1.484	37.60
SBH51-LP E-D38-S -BK	38/76	1.457	37.00	1.457	39.50	1.555	38.70	1.524	38.60
SBH51-LP E-D39-S -BK	39/78	1.496	38.00	1.496	40.50	1.594	39.70	1.563	39.60
SBH51-LP E-D40-S -BK	40/80	1.535	39.00	1.535	41.50	1.634	40.70	1.602	40.60
SBH51-LP E-D41-S -BK	41/82	1.575	40.00	1.575	42.50	1.673	41.70	1.642	41.60
SBH51-LP E-D42-S -BK	42/84	1.614	41.00	1.614	43.50	1.713	42.70	1.681	42.60
SBH51-LP E-D43-S -BK	43/86	1.654	42.00	1.654	44.50	1.752	43.70	1.720	43.60
SBH51-LP E-D44-S -BK	44/88	1.693	43.00	1.693	45.50	1.791	44.70	1.760	44.60
SBH51-LP E-D45-S -BK	45/90	1.732	44.00	1.732	46.50	1.831	45.70	1.799	45.60
SBH51-LP E-D46-S -BK	46/92	1.772	45.00	1.772	47.50	1.870	46.70	1.839	46.60
SBH51-LP E-D47-S -BK	47/94	1.811	46.00	1.811	48.50	1.909	47.70	1.878	47.60
SBH51-LP E-D48-S -BK	48/96	1.850	47.00	1.850	49.50	1.949	48.70	1.917	48.60
SBH51-LP E-D49-S -BK	49/98	1.890	48.00	1.890	50.50	1.988	49.70	1.957	49.60
SBH51-LP E-D50-S -BK	50/100	1.929	49.00	1.929	51.50	2.028	50.70	1.996	50.60

UNLESS OTHERWISE SPECIFIED: DIMENSIONS ARE IN MM(INCHES)	DRAWN	DATE	NAME		TITLE		
		06/08/2011	LH				
	TOLERANCES: ANGULAR: X= .3 [10] XX= .2 [08] XXX= .1 [04]	THE INFORMATION HEREIN CONTAINS PROPRIETARY INFORMATION OF SULLINS ELECTRONICS AND IS NOT TO BE REPRODUCED, USED OR DISCLOSED TO OTHERS FOR ANY PURPOSE EXCEPT AS SPECIFICALLY AUTHORIZED IN WRITING BY AN OFFICER OF SULLINS ELECTRONICS.				PART NUMBER	
		INTERPRET DIMENSIONS AND TOLERANCING PER: ASME Y14.5M-2009					
	SIZE	CAGE CODE	DWG. NO.	REV A			
	C	54453	11775				
	SCALE: 5:1				SHEET 1 OF 1		

FILE NAME: Z:\ECO PENDING\2364 SBH51 BOX HEADER\11775 SBH51-LP E-D -S -BK PRINT: 6/10/2011