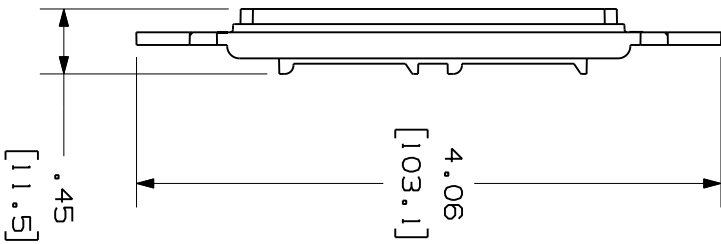
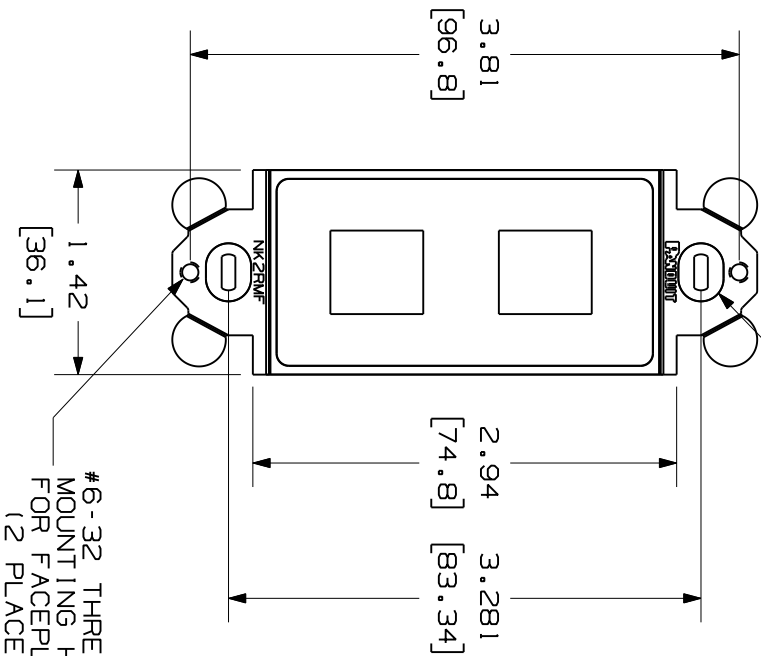


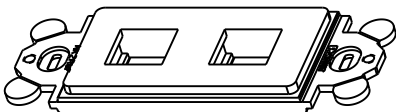
THIS COPY IS PROVIDED ON A RESTRICTED BASIS AND IS NOT TO BE USED IN ANY WAY DETRIMENTAL TO THE INTERESTS OF PANDUIT CORP.

MOUNTING HOLE FOR
#6-32 X 1" PANHEAD SCREW
(2 PLACES)



PANDUIT P/N	WEIGHT
NK2RMF**	.021b EACH PC (10.59 EACH PC)

- NOTES:
- SEE CURRENT CATALOG FOR ADDITIONAL PART NUMBER SUFFIXES TO INDICATE COLOR AND OR PACKAGE QUANTITY.
 - SEE CATALOG FOR COMPLETE LIST OF PARTS APPLICABLE FOR USE WITH THIS PART.
 - DIMENSIONS IN PARENTHESES ARE IN METRIC.
 - (2) #6-32 x 1" PANHEAD SCREWS ARE SUPPLIED.



REV	DATE	BY	CHK	DESCRIPTION	ECN	R	CUST	SUP	OTH
R	6-20-08	JSP		RELEASED TO PRODUCTION	00741-147				

MODEL FILENAME: M00741MG/01
DRAWING FILENAME: M00741MG_DC/01A
SIZE: A

NETKEY 2 POSITION RECTANGULAR MODULE FRAME CUSTOMER DRAWING

PANDUIT TM
TINLEY PARK, ILL. 60477

ALL DIMENSIONS ARE GIVEN IN INCHES, UNLESS OTHERWISE SPECIFIED.
DIMENSIONAL TOLERANCES ARE:
(.X) ± .01
(.XX) ± .001
(.XXX) ± .001
ANGLES ± .31

WORK INSTRUCTION: N/A
SCALE: NONE
PART NO.: NK2RMF**
DRAWING NO.: 00741-147

DATE: 6-20-08
DRAWN BY: JSP
MATERIAL: ABS