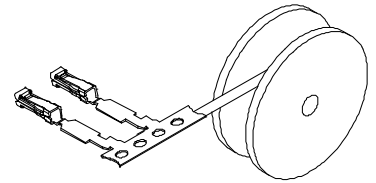
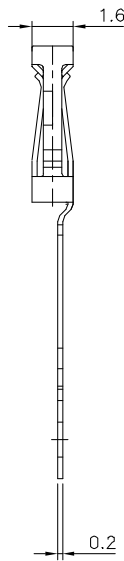
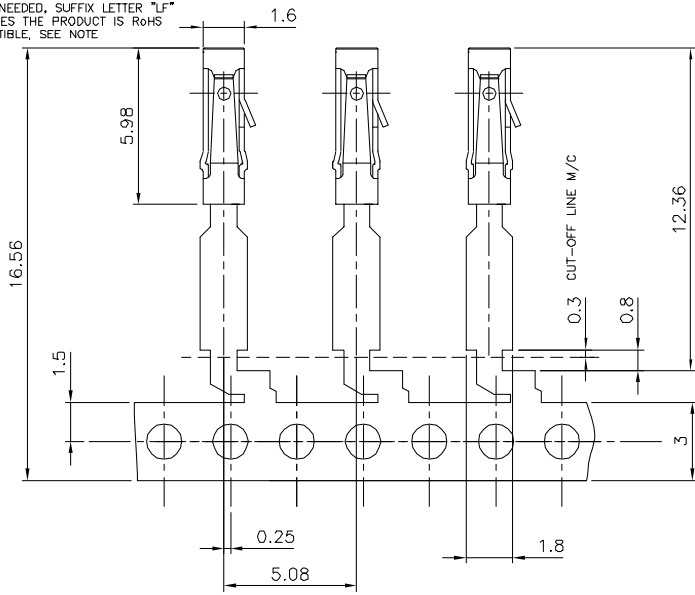


PRODUCT NUMBER	QUANTITY PER REEL	PACKAGING
73348-Y01(LF)	15000	CARDBOARD REEL

WHEN NEEDED, SUFFIX LETTER "LF" INDICATES THE PRODUCT IS ROHS COMPATIBLE, SEE NOTE



REELING AFTER STAMPING

73348-3XXLF	0.76µm GOLD	Sn	0.3N MIN 0.6N MAX
73348-4XXLF	5µm Sn	Sn	0.3N MIN 0.6N MAX
73348-3XX	0.76µm GOLD	SnPb	0.3N MIN 0.6N MAX
73348-4XX	5µm SnPb	SnPb	0.3N MIN 0.6N MAX
PLATING CODE	CONTACT AREA	SOLDER TAIL	WITHDRAWAL FORCE USING SQUARE PIN 0.61
	PLATING THICKNESS OVER 1.27µm Ni		

NOTE:

- MATERIAL: PHOSPHOR BRONZE, EXTRA HARD
- ROHS COMPATIBLE PRODUCT SPECIFICATIONS
- a - PLATING:
 - "LF" MEANS THE PRODUCT IS LEAD-FREE, 2µm MINIMUM MATTE TIN OVER 1.27µm MINIMUM NICKEL UNDERPLATE.
- b - LABELING:
 - MEETS PACKAGING SPECS AS PER GS-14-920
- c - LEGAL STATEMENT: SEE GS-22-008

mat'l code	SEE NOTES	surface	tolerance	projection	product family
177	ecr ns dr date	ISO 180	ISO 44	ISO 180	DUFLEX
D	F04-0373 DLE 04-11-18	mm	mm	mm	DUFLEX TERM.
E	F08-0903 DLE 06-06-20	Line1	Line1	scale 10:1	WITHOUT IDC
F	F07-0271 LMJ 07-12-08	az1	az1		sheet 1 of 1
		dr	D. LEGRAND	0706.08.20	size
		mgr	P. NZZ	06.08.20	A3
		tr	P. NZZ	06.08.20	
		pppl	P. NZZ	06.08.20	
sheet index	revision sheet				61 21 7151 86