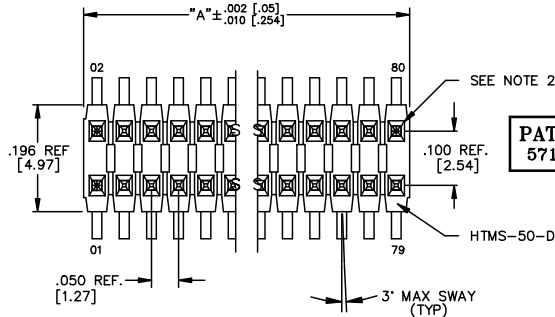


REVISION AQ

DIMENSIONS ARE IN INCHES		TOLERANCES ARE:	
ONE PLACE DECIMALS ± .1 [2.5]	THREE PLACE DECIMALS ± .005 [0.13]	ANGLES	± 2°
TWO PLACE DECIMALS ± .01 [0.25]	FOUR PLACE DECIMALS ± .0020 [0.051]		

TITLE: HI-TEMP TERMINAL MICRO-STRIP (DOUBLE ROW)
 DWG NO: FTR-1XX-XX-XX-D-X-XX
 SHEET 1 OF 2



PATENT NUMBERS
 5713755 / 5961339

FTR-1XX-XX-XX-D-X-XX

BODY LENGTH SPEC
 EXPRESSED IN # POS PER ROW
 (-02 THRU -40)
 "A" = 'XX' x .050 [1.27]

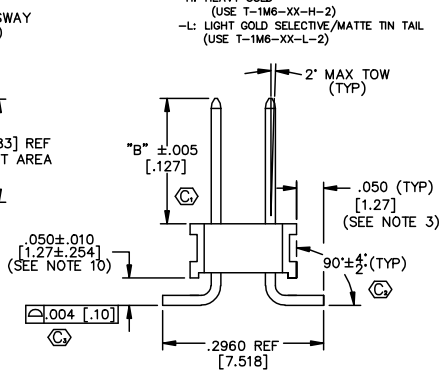
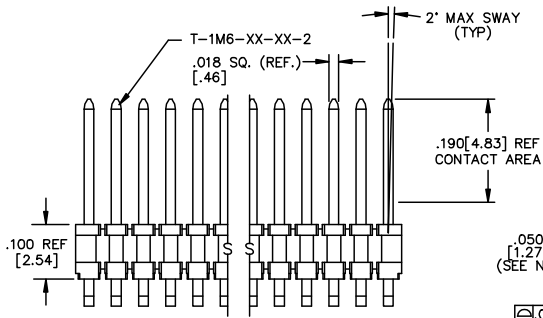
LEAD STYLE SPEC
 SEE TABLE 1

PLATING SPECIFICATION
 -G: GOLD (USE T-1M6-XX-G-2)
 -T: TIN (USE T-1M6-XX-T-2)
 (LEAD STYLES -01, -02, -03, -51, -52 ONLY)
 -S: SELECTIVE (USE T-1M6-XX-S-2)
 (LEAD STYLE -01 ONLY)
 -SM: HEAVY GOLD SELECTIVE, MATTE TIN TAIL
 (USE T-1M6-XX-S-2)
 -TM: MATTE TIN (USE T-1M6-XX-T-2)
 -FM: FLASH GOLD SELECTIVE, MATTE TIN TAIL
 (USE T-1M6-XX-F-2)
 -H: HEAVY GOLD
 (USE T-1M6-XX-H-2)
 -L: LIGHT GOLD SELECTIVE/MATTE TIN TAIL
 (USE T-1M6-XX-L-2)

OPTION
 -XX: POLARIZING SPECIFICATION
 XX INDICATES POS. TO BE OMITTED
 -A: ALIGNMENT PIN (5 POS MIN)
 (SEE FIG 2 & 4, SHT 2)
 SAMTEC DISCRETION ON WHICH
 -A PIN USED
 -LC: STAKED LOCKING CLIP (USE LC-05-TM)
 [BODY SPEC -D ONLY]
 (SEE FIG 4, SHT 2) (SEE NOTE 11)
 -TR: TAPE & REEL PACKAGING

OPTION
 -P: PICK & PLACE PAD
 (USE PPP-22)
 (SEE FIG 3, SHT 2)
 [5 POS MIN]

BODY SPECIFICATION
 -D: DOUBLE (USE HTMS-50-D)



- NOTES:
- TERMINAL PUSHOUT FORCE: 2 lbs. MIN.
 - MAX PIN ROTATION IN BODY: 2°
 - SHEAR TAIL TO DIMENSION GIVEN.
 - NOTE DELETED.
 - ⊙ REPRESENTS A CRITICAL DIMENSION FOR STATISTICAL PROCESS CONTROL USE.
 - TUBE POSITIONS -05 THRU -40; LAYER PACKAGE POSITIONS -02 THRU -04.
 - P OPTION: TUBE POSITIONS -07 THRU -40; ALL OTHERS, TAPE & REEL ONLY.
 - CUT FLASH: .010 [0.25] MAX
 - .003 [0.08] MAX BURR
 - MEASURED AT BEND RADIUS.
 - DUE TO THE HIGH AMOUNT OF INSERTION FORCE NEEDED, THE -LC OPTION IS NOT COMPATIBLE WITH AUTO PLACEMENT. SAMTEC RECOMMENDS MANUAL PLACEMENT FOR ALL ASSEMBLIES WITH THE -LC OPTION.

LEAD STYLE	TERMINAL SPEC.	'B'
-01	T-1M6-13-XX-2	.230 [5.84]
-02	T-1M6-04-XX-2	.100 [2.54]
-03	T-1M6-04-XX-2	.125 [3.18]
-51	T-1M6-13-XX-2	.190 [4.83]
-52	T-1M6-13-XX-2	.205 [5.21]
-53	T-1M6-05-XX-2	.285 [7.24]
-54	T-1M6-15-XX-2	.335 [8.51]
-55	T-1M6-16-XX-2	.390 [9.91]
-56	T-1M6-16-XX-2	.405 [10.29]
-57	T-1M6-16-XX-2	.430 [10.92]

LEAD STYLE	PACKAGING TUBE	PLUG
-01, -02, -03, -51, -52	PT-1-24-02-44 (SEE NOTE 6)	TP-03
-01-P, -02-P, -03-P, -51-P, -52-P	PT-1-24-02-44 (SEE NOTE 7)	TP-03
-53, -54	PT-1-24-01-29 (SEE NOTE 6)	TP-03
-55, -56, -57	PT-1-24-09-29 (SEE NOTE 6)	TP-03
-53-P	PT-1-24-03-44 (SEE NOTE 7)	TP-03
-54-P, -55-P, -56-P, -57-P	PT-1-24-05-44 (SEE NOTE 7)	TP-03

LENGTH	"L"
-04	.505 [12.83]
-05	.705 [17.91]
-13	.625 [15.88]
-15	.755 [19.18]
-16	.825 [20.96]

MATERIAL:
 BODY:
 LIQUID CRYSTAL POLYMER
 COLOR: BLACK
 TERMINAL:
 PHOS BRONZE
 MAX FLASH ALLOWED:
 .004 [0.10]
 MAX GATE VESTIGE
 ALLOWED: .002 [0.05]

* REF FOR PIN LENGTH

EXISPROD/ASSEMBLY/060
 FTR-ASM

samtec

520 PARK EAST BLVD. NEW ALBANY, INDIANA 47150
 PHONE (812) 944-6733 P.O. BOX 1147
 CODE 55322

MADE BY: BRATCHER 2-9-95

FTR-1XX-XX-XX-D-X-XX
 SHEET 1 OF 2

PROPRIETARY NOTE
 THIS DOCUMENT CONTAINS INFORMATION CONFIDENTIAL AND PROPRIETARY TO SAMTEC INC. AND SHALL NOT BE REPRODUCED OR TRANSMITTED IN ANY FORM OR BY ANY MEANS, ELECTRONIC OR MECHANICAL, INCLUDING PHOTOCOPYING, RECORDING, OR BY ANY INFORMATION STORAGE AND RETRIEVAL SYSTEM, WITHOUT THE EXPRESS WRITTEN CONSENT OF SAMTEC INC.