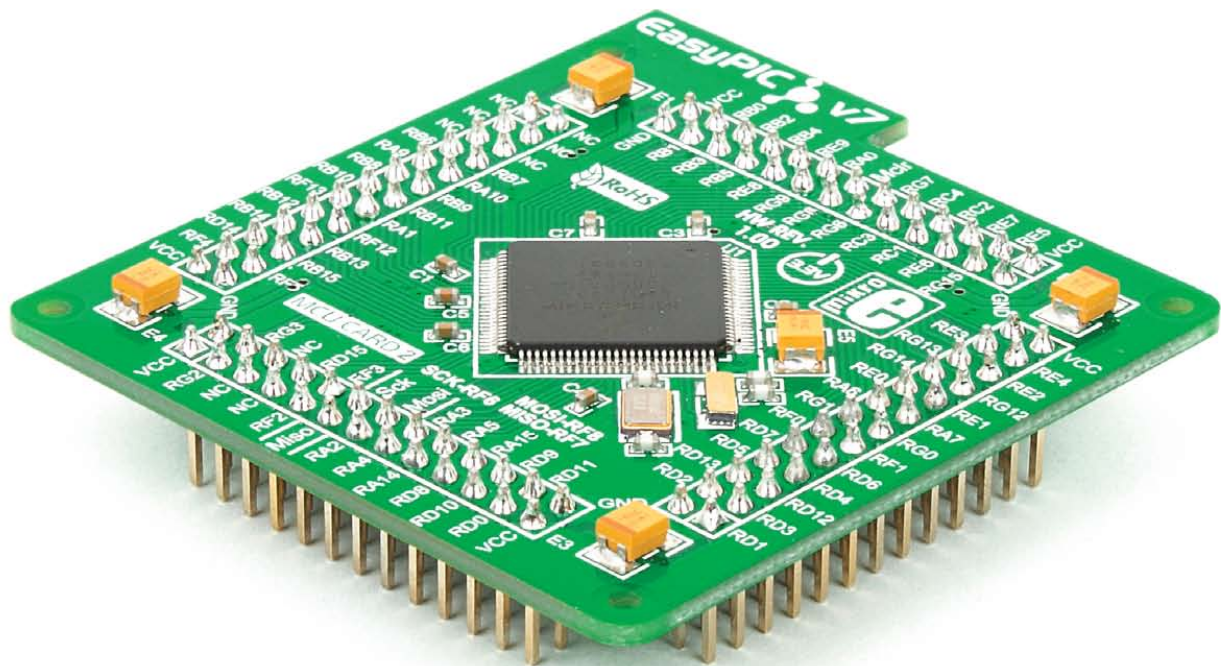


100-pin TQFP PF MCU CARD 2 with dsPIC33FJ256GP710A



Card information

The PF MCU CARD 2 is shown on **Figure 1**. It contains **dsPIC33FJ256GP710A** microcontroller with on-chip peripherals and is a great choice for both beginners and professionals. After testing and building the final program, this card can also be taken out of the board socket and used in your final device.

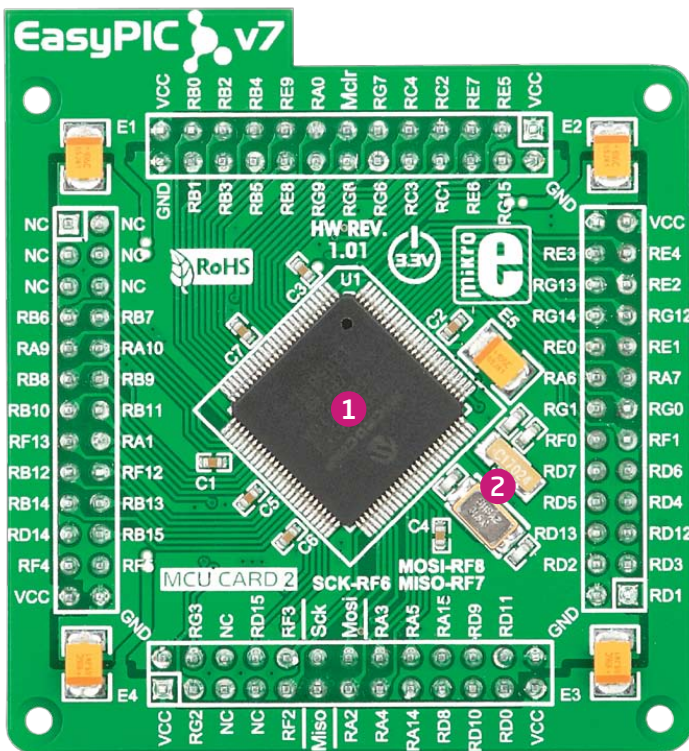


Figure 1: MCU card with dsPIC33FJ256GP710A

- 1 dsPIC33FJ256GP710A** has **40 MIPS** CPU speed, **256K bytes** of program memory (flash), **30K bytes** of data memory. It has 85 General purpose **I/O pins**, **9 16-bit timers**, **2 ADC** (32 ch), **2 UARTs**, internal 7.37 MHz and 512 kHz oscillators, **2 I2C**, **2 SPI** and **2 CAN** controllers. It also contains programming and debugging interface.
- 2 8MHz crystal oscillator.** We carefully chose the most convenient crystal value that provides clock frequency which can be used directly, or with the PLL multipliers to create higher MCU clock value. MCU card also contains 32.768 kHz crystal oscillator which provides external clock waveform for RTCC module.

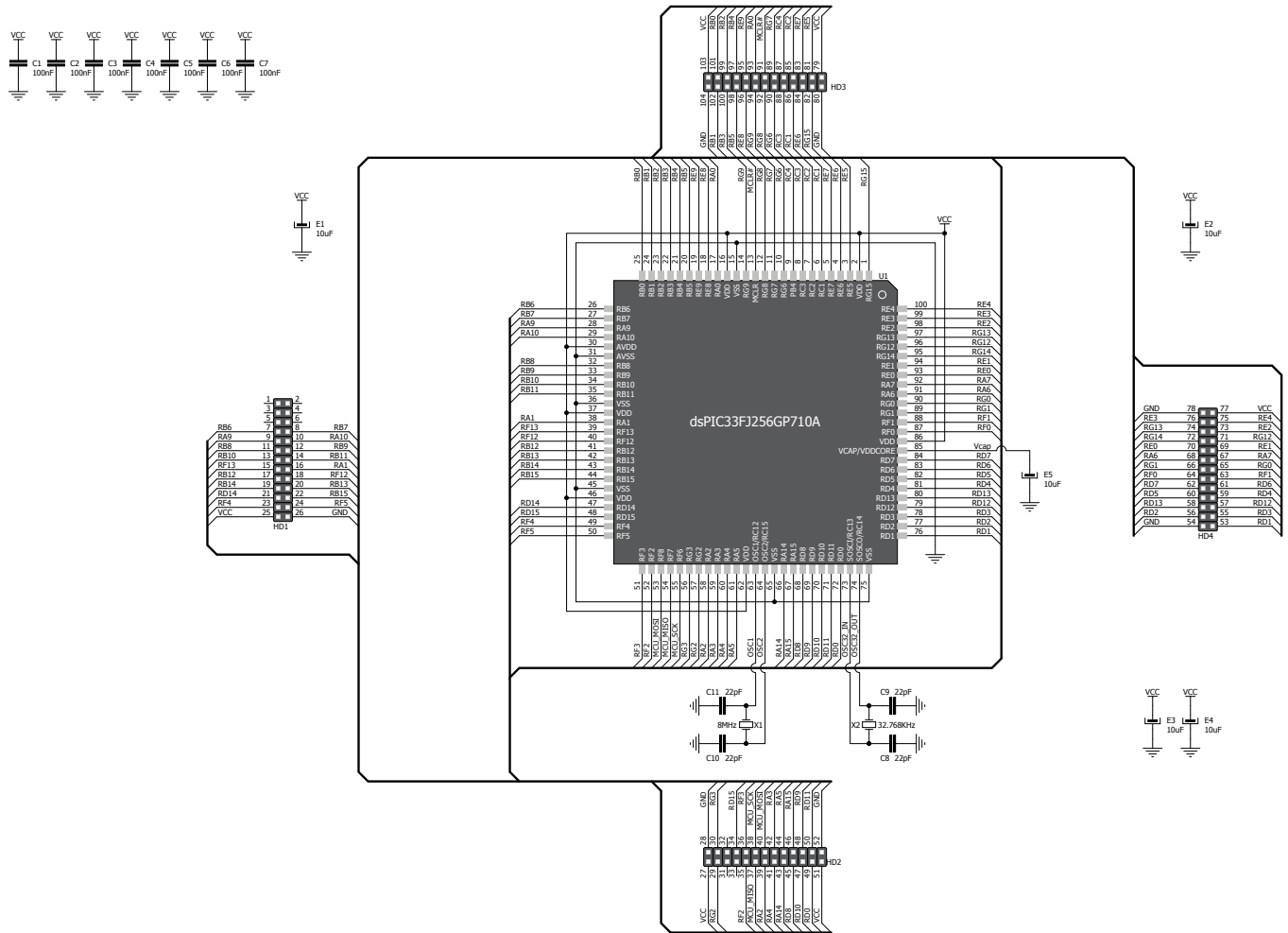


Figure 2: MCU card schematic

Card dimensions

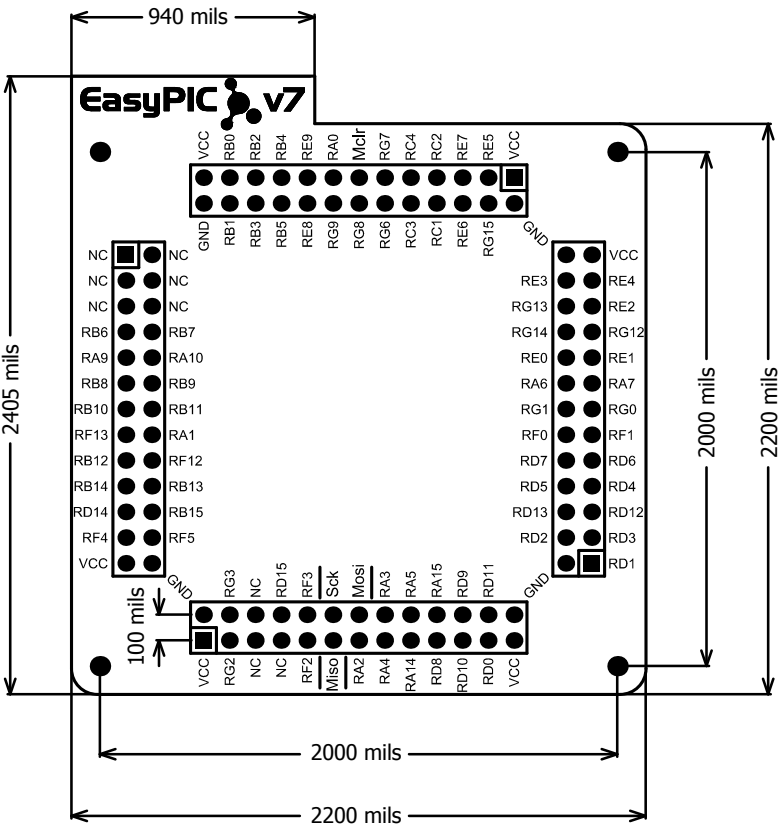
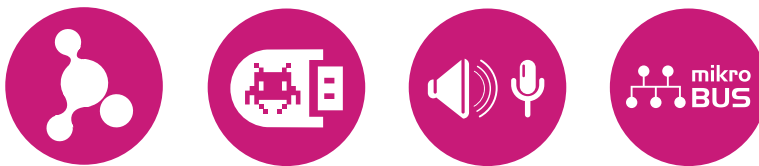


Figure 3: MCU card dimensions.



If you want to learn more about our products, please visit our website at www.mikroe.com

If you are experiencing some problems with any of our products or just need additional information, please place your ticket at www.mikroe.com/esupport

If you have any questions, comments or business proposals,
do not hesitate to contact us at office@mikroe.com