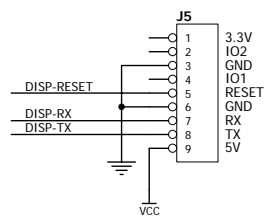
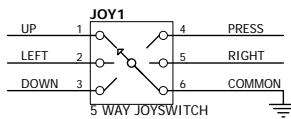


uLCD-144 Display Module

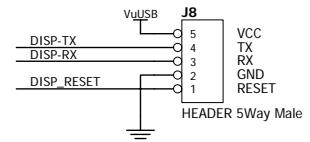


Joystick - 5 Way Switch



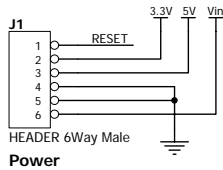
JOYSTICK POSITION:	ARDUINO SIGNAL:
LEFT	D3
RIGHT	D4
UP	D6
DOWN	D2
PRESS	D5
COMMON	GND

micro-USB INTERFACE

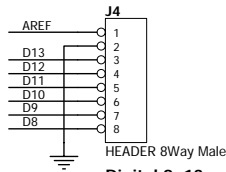


NOTE4: Use uUSB-MB5 or uUSB-CF5 to:
 - program the GOLDELOX with PmmC files
 - download 4DGL code to GOLDELOX

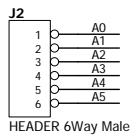
Arduino Interface Headers



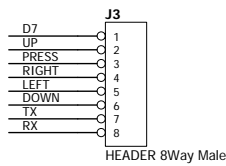
Power



Digital 8..13

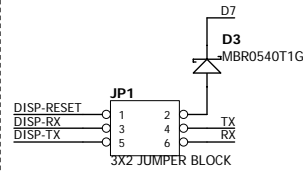


Analog



Digital 0..7

Jumper Selection



NOTE1: Remove all 3 Jumpers when:

- programming the Arduino
- programming the GOLDELOX with PmmC file
- downloading 4DGL code

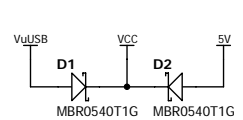
NOTE2:

- Insert TX and RX jumpers when communicating with the Arduino.

NOTE3:

- Arduino D7 controls the Shield RESET. Insert the jumper to enable it.

Power



Title			4Display-Shield-144 for Arduino		
Size	Number	20/07/2010		Revision	Rev1
A4					
Date:	6-Aug-2010			Sheet of	
File:	Y:\Projects\4Duino\Hardware\4Duino.DDBDrawn By:				