

# SX-DS-4000U2

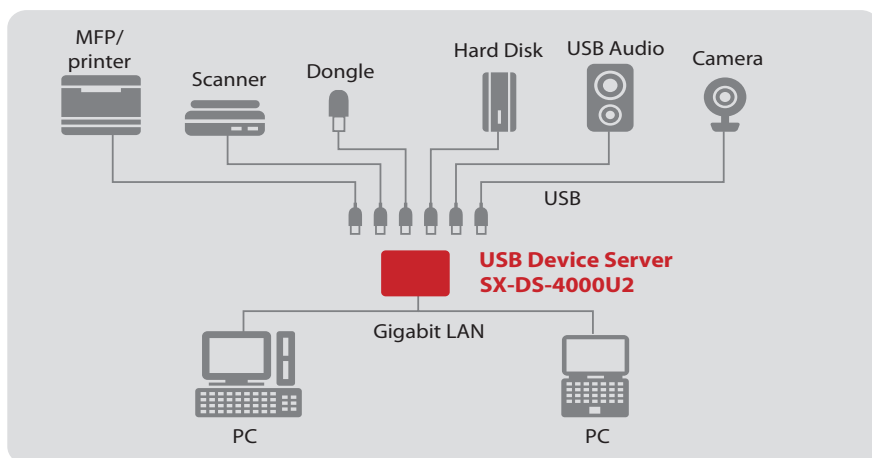
## High-Performance Gigabit USB Device Server



**Easily Connect and Share Virtually any USB Device on a Network**

The SX-DS-4000U2 is a high-performance USB Device Server with an astounding 800 MHz of computing power. The USB Virtual Link technology from silex technology allows virtually any kind of USB device network-capable in the simplest of manners. Printers, scanners, hard drives, dongles and card readers can be used over the network via 2 USB Hi-Speed ports with the SX-DS-4000U2 just as though they were connected to the computer.

### Connection example



### Features

- High-Performance**  
 Higher data throughput due to optimized performance and Gigabit connection: Extremely powerful CPU (800MHz) and two USB 2.0 Hi-Speed ports (TypeA)
- Energy-Saver Mode**  
 When the device server is not used for a certain period of time, the power supply to the USB bus is turned off to save energy. The power supply to the USB bus is automatically turned back on when the server is used again.
- Print Server Function**  
 Supports standard TCP/IP printing (LPR/IPP/RAW)  
 The product supports the general RAW-mode, LPR-mode and IPP-mode network printing protocols. When the product is connected to a printer, the standard Windows print function can be used to print.

#### AutoConnect Feature

The Printer AutoConnect feature allows multiple computers to easily share USB printer over the network by making an automatic connection to the printer. Then automatically disconnecting after the print job is sent making the device server available to the next user.

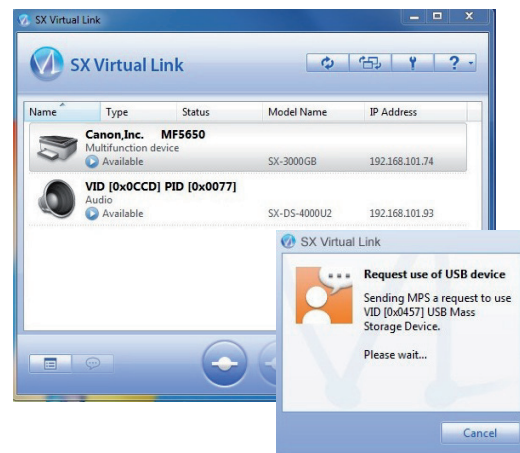
- Isochronous Transfer Mode**  
 USB devices such as Webcams or USB sound cards, which require ongoing data transmission in real time, can also be used in the network environment. Both Full Speed and HiSpeed are supported.

### What is SX Virtual Link?

Silex has created Software for Windows or Macintosh computers called SX-Virtual Link which precisely emulates a USB port on each of the computers that want to access the USB device over the network. The computers think that they are communicating with the device via a direct USB connection, but they are actually communicating over the network with a Silex USB Device Server product.

### What is a USB Device Server?

It is a network device that uses Silex USB Virtual Link technology to allow USB to be connected and shared on a network. Thanks to the USB Virtual Link technology from Silex technology, virtually any USB device can be used on a network, just as though they were connected with a USB cable.



The network is searched for the product and the connected USB devices; the search results are shown in an overview on the main screen.

If another user is using a shared USB device, a request for use can be sent. It can also be specified that failure to respond to this request will automatically lead to a disconnection after a timeout. This makes it easy to share any USB device over a network in home and business environments.

## Features, continued

**With the SX-DS-4000U2, you can connect** a variety of USB devices over the network, like USB dongles, MP3 players, CD/DVD/Zip drives, USB drives and other storage media, scanners, printers, digital cameras, USB sound cards, USB LCD monitors, telescopes, mixing consoles, and many more.

**Virtual environments:** The USB Device Server is compatible with the following virtualization programs and environments: VMware, Citrix, Microsoft Terminal Server and Hyper-V.

**No special drivers or applications** are needed to use the USB devices: The drivers and applications that worked when the USB device is directly connected to the computer will continue to work.

**For manufacturers:** Silex offers manufacturers the USB Virtual Link technology as an OEM product. On the hardware side there is an installation module and on the software there are two powerful SDK systems available to integrate the mature USB Virtual Link technology into any product, such as routers, access points, NAS systems or home gateways.



**2 USB port – with a total of 1000mA of power supply; using an optional USB hub, up to 15 USB connections can be supported**



**Power connection, reset button, Gigabit Ethernet connection**

## Other USB Device Servers

### SX-3000GB USB Device Server with Gigabit support

- Gigabit Ethernet
- 2x USB 2.0 Hi-Speed Ports
- 250 MHz CPU



Win Mac

### SX-DS-3000WAN USB Device Server with up to 300Mbit Dual Band 802.11a/b/g/n WLAN

- 10 BASE-T/100 BASE-TX/1000 BASE-T (automatic detection)
- IEEE802.11a/b/g/n
- 2x USB 2.0 Hi-Speed Ports
- WPS for easy setup



Win Mac

## Technical data

Product name	SX-DS-4000U2
Network interface	10 BASE-T/100 BASE-TX/1000 BASE-T (automatic detection)
Device interface	2 x USB 2.0 Hi-Speed (type A) ports with a total of 1A of power supply
Protocols supports	TCP/IP
Operating systems supported	Windows 7 (32/64bit), Vista (32/64bit), XP, 2000, Windows Server 2008 (32/64bit), Windows Server 2003 (32/64bit). * MacOS X [ PowerPC : Ver 10.3x ~ Ver 10.5x Intel : Ver 10.4.4 ~ Ver 10.7x ] *
Configuration	Setup program, Web browser, telnet
Dimensions	99 x 67 x 30 mm (without rubber feet)
Weight	97 g
Power supply	Power supply 110 V AC, 50/60 Hz
Max. power consumption	.5W (DC5V .5A) up to 7.5W (DC5V 1.5A) including 1A for USB power
Contents of package	Main unit, power supply, CD-ROM (setup program, user manual), setup instructions
Certifications	VCCI class B / FCC class B / IC class B / CE class B

## Gigabit Ethernet USB Device Server



SX-DS-4000U2

## About Silex

Silex Technology America, Inc. is a subsidiary of Silex Technology Inc., a 35-year developer and leading network technology company specializing in network and wireless technology, providing hardware, software, embedded modules and turnkey connectivity products. Silex Technology has regional offices for sales, marketing and development in Japan, United States and Germany. Silex Technology is integrated vertically to support customers from design to production, maintaining the highest quality standards.



ISO 9001  
silex technology, Inc.



ISO 14001  
silex technology, Inc.  
Design & Manufacturing Center

Silex Technology is a registered trademark of silex technology, Inc. Other products or trade names are the registered trademark of their owners. Changes to technical specifications and data may be made with no prior notice. © 2012 Silex Technology America, Inc. All rights reserved.

## Global marketing and support locations:



**USA**  
Silex Technology America, Inc.  
+1-801-748-1199  
www.silexamerica.com  
> contact@silexamerica.com

**Japan**  
Silex Technology, Inc.  
+81-774-98-3782  
www.silex.jp  
> support@silex.jp

**Europe**  
Silex Technology Europe GmbH  
+49-2151-65009-10  
www.silexeurope.com  
> contact@silexeurope.com