



# MAX5893/MAX5894/MAX5895 Evaluation Systems/Evaluation Kits

## General Description

The MAX5893/MAX5894/MAX5895 evaluation kits (EV kits) are fully assembled and tested circuit boards that contain all the components necessary to evaluate the performance of this family of interpolating and modulating dual digital-to-analog converters (DACs). The EV kit boards include circuitry that converts the DAC differential output currents to single-ended voltages. The EV kits also include circuitry that generates a clock signal from an AC sine-wave input signal.

The included evaluation software runs under Windows® 98/2000/XP, providing a graphical user interface (GUI) to exercise the features of the MAX5893/MAX5894/MAX5895 through the use of an SPI™ interface.

The MAX5893/MAX5894/MAX5895 EV kits provide a proven PC board layout to facilitate evaluation of the MAX5893/MAX5894/MAX5895. The EV kits must be interfaced to appropriate timing signals for proper operation. When using the EV kits without the CMOD232 command module, connect the system-side power (V<sub>MOD</sub>), ground-return (GND), and interface (SCLK, CS, DIN, DOUT) signals to the pads on the PC board (see Figure 5). Refer to the MAX5895 data sheet for timing requirements.

The MAX5895 evaluation software runs under Windows 98/2000/XP on an IBM PC, interfacing to the EV system board (CMOD232) through the computer's serial communications port. See the *Quick Start* section for setup and operating instructions.

Order the complete EV system for comprehensive evaluation of the MAX5893/MAX5894/MAX5895 using a personal computer. Order the EV kit if the command module has already been purchased with another Maxim EV system, or for custom use in other microcontroller (μC)-based systems.

The MAX5893/MAX5894/MAX5895 EV kits can be used to evaluate the MAX5893 (12-bit), MAX5894 (14-bit), and the MAX5895 (16-bit) digital-to-analog converters. See the *Ordering Information* table for instructions on how to order the EV kit (and EV system) with these devices preinstalled.

*Windows is a registered trademark of Microsoft Corp.  
SPI is a trademark of Motorola, Inc.*

### MAX5893/MAX5894/MAX5895 EV Kit Files

PROGRAM	DESCRIPTION
INSTALL.EXE	Installs the EV kit software
MAX5895.EXE	Application program
HELPPFILE.HTM	MAX5893/MAX5894/MAX5895 EV kit help file
UNINST.INI	Uninstalls the EV kit software

## Features

- ◆ Proven PC Board Layout
- ◆ SPI 4-Wire Serial Interface
- ◆ On-Board Reference Circuitry
- ◆ On-Board Reset Circuitry
- ◆ Assembled and Tested
- ◆ Include Windows 98/2000/XP-Compatible Software

## Ordering Information

PART	TEMP RANGE*	IC PACKAGE	SPI INTERFACE TYPE
MAX5893EVKIT	0°C to +70°C	68 QFN	Not included
MAX5393EVCMOD2	0°C to +70°C	68 QFN	CMOD232
MAX5894EVKIT	0°C to +70°C	68 QFN	Not included
MAX5894EVCMOD2	0°C to +70°C	68 QFN	CMOD232
MAX5895EVKIT	0°C to +70°C	68 QFN	Not included
MAX5895EVCMOD2	0°C to +70°C	68 QFN	CMOD232

\*EV kit PC board temperature range only.

**Note:** The MAX5895 EV kit software is provided with the MAX5893/MAX5894/MAX5895 EV kits and can be used to evaluate all three parts. The CMOD232 board is required to interface the EV kit to the computer when using the included software.

## Common Component List

DESIGNATION	QTY	DESCRIPTION
C1–C5	5	220μF ±20%, 6.3V tantalum capacitors (C-case) AVX TPSC227M006R0250
C6–C10	0	Not installed (C-case)
C11–C15	5	10μF ±20%, 10V X5R ceramic capacitors (1210) TDK C3225X5R1A106M
C16–C20, C37–C40, C48	10	1.0μF ±20%, 6.3V X5R ceramic capacitors (0402) TDK C1005X5R0J105M
C21–C32, C34, C35, C36, C49, C50	17	0.1μF ±20%, 16V X7R ceramic capacitors (0306) TDK C0816X7R1C104M
C41, C42	2	0.1μF ±20%, 10V X7R ceramic capacitors (0402) TDK C1005X7R1A104M
C43–C46	0	Not installed (0603)
C47	0	Not installed (0402)

Evaluate: MAX5893/MAX5894/MAX5895



For pricing, delivery, and ordering information, please contact Maxim/Dallas Direct! at 1-888-629-4642, or visit Maxim's website at [www.maxim-ic.com](http://www.maxim-ic.com).

# MAX5893/MAX5894/MAX5895 Evaluation Systems/Evaluation Kits

## Common Component List (continued)

DESIGNATION	QTY	DESCRIPTION
J1	1	2 x 20 right-angle female connector
J2, J3	2	Dual-row, right-angle, 40-pin headers
JU3, JU4	2	Jumpers, 2-pin headers
L1-L5	5	Ferrite bead cores (0805) Fair-Rite 2508051217Z0
OUTI, OUTQ, CLK, DATACLK	4	SMA PC-mount connectors
OUTIN, OUTIP, OUTQN, OUTQP	0	Not installed
R1-R4	4	49.9Ω ±0.1% resistors (0603) IRC PFC-W0603R-03-49R9-B or equivalent
R5	1	2kΩ ±0.1% resistor (0603)
R6, R7	2	24.9Ω ±1.0% resistors (0603)
R8, R9	2	100Ω ±0.1% resistors (0603)
R10-R13	0	Not installed (0603)
R14	1	174kΩ ±1% resistor (0603)

DESIGNATION	QTY	DESCRIPTION
R15	1	100kΩ ±1% resistor (0603)
SW1	1	Momentary pushbutton switch (NO)
T1, T2	2	1:1 RF balun transformers Coilcraft TTWB3010-1
T3, T4, T5	3	RF transformers Mini-Circuits ADTL1-12
U1	1	<b>Note:</b> See the <i>EV Kit Specific Component List</i>
U2	1	Maxim MAX6161AESA (8-pin SO) or Maxim MAX6161BESA (8-pin SO)
U3	1	Maxim MAX6392KA29 (SOT23-8) top mark = <b>AAHV</b>
U4, U5	2	Maxim MAX1840EUB (10-pin μMAX®)
None	3	Shunts
None	1	MAX5895 PC board
None	1	Software disk (CD-ROM) MAX5895 EV kit

μMAX is a registered trademark of Maxim Integrated Products, Inc.

## EV Kit Specific Component List

EV KIT PART NUMBER	DESIGNATION	DESCRIPTION
MAX5895EVKIT	U1	Maxim MAX5895EGK (68-pin QFN 10mm x 10mm)
MAX5894EVKIT		Maxim MAX5894EGK (68-pin QFN 10mm x 10mm)
MAX5893EVKIT		Maxim MAX5893EGK (68-pin QFN 10mm x 10mm)

## Component Suppliers

SUPPLIER	PHONE	FAX	WEBSITE
AVX	843-946-0238	843-626-3123	www.avxcorp.com
CoilCraft	847-639-6400	847-639-1469	www.coilcraft.com
IRC	361-992-7900	361-992-3377	www.irctt.com
Mini-Circuits	718-934-4500	718-934-7092	www.minicircuits.com
TDK	847-803-6100	847-390-4405	www.component.tdk.com

**Note:** Indicate that you are using the MAX5893/MAX5894/MAX5895 when contacting these component suppliers.

# MAX5893/MAX5894/MAX5895 Evaluation Systems/Evaluation Kits

Evaluate: MAX5893/MAX5894/MAX5895

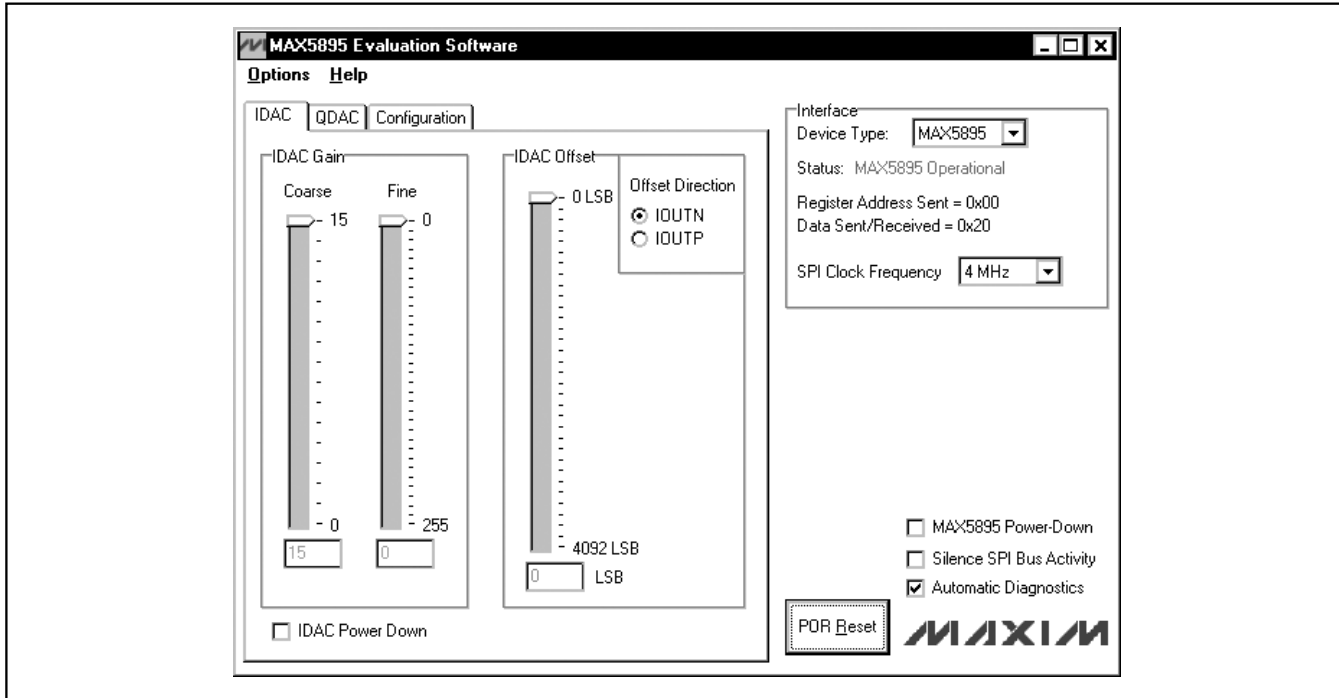


Figure 1. MAX5895 EV Kit Software Main Window (IDAC Tab)

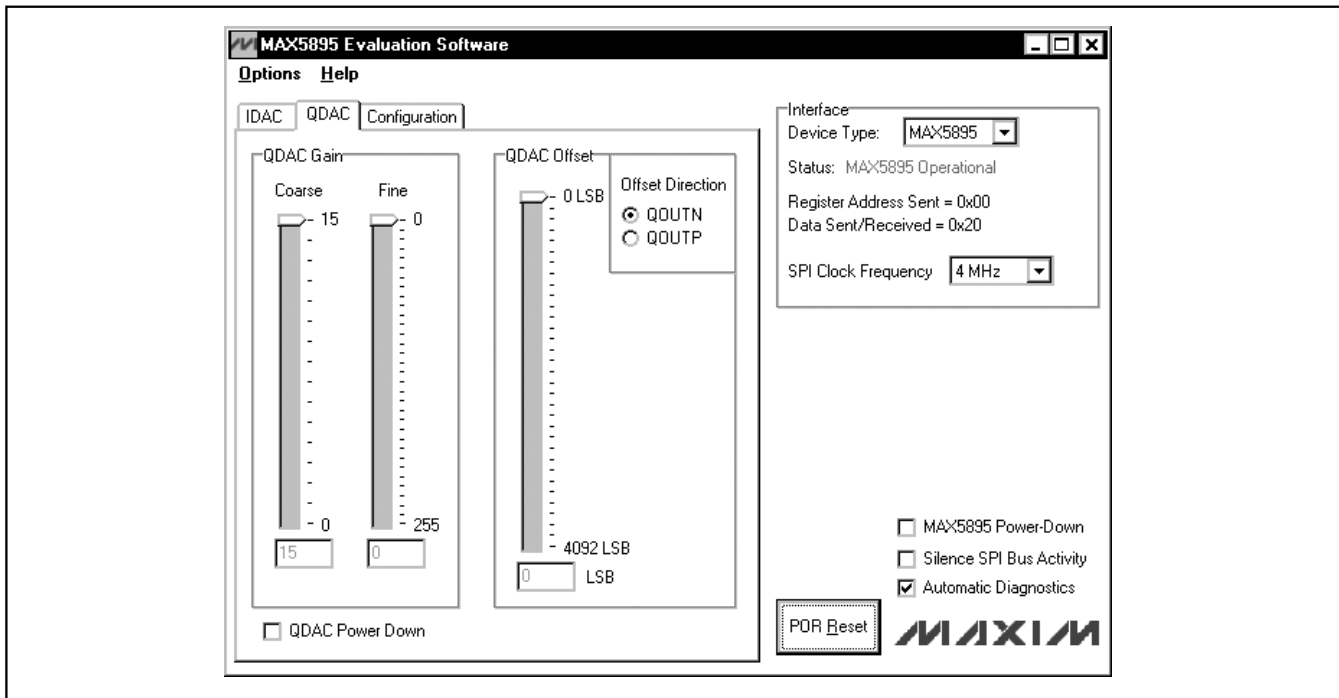


Figure 2. MAX5895 EV Kit Software Main Window (QDAC Tab)

# MAX5893/MAX5894/MAX5895 Evaluation Systems/Evaluation Kits

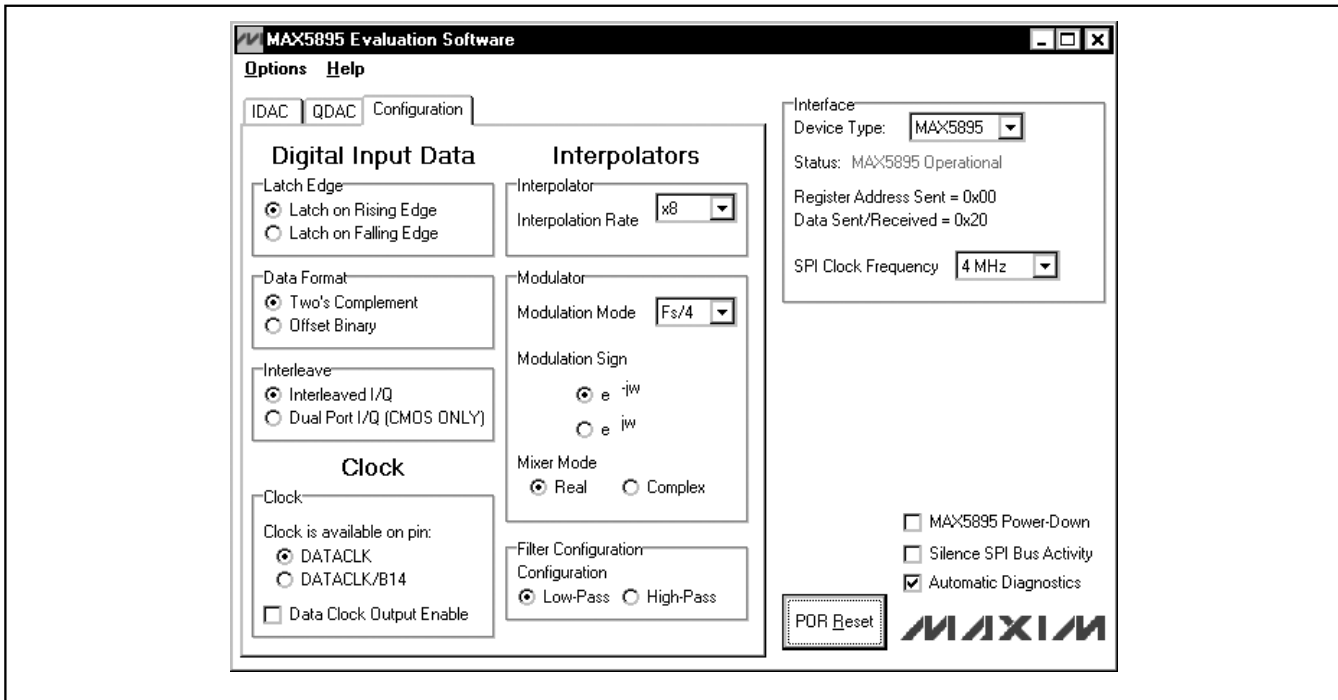


Figure 3. MAX5895 EV Kit Software Main Window (Configuration Tab)

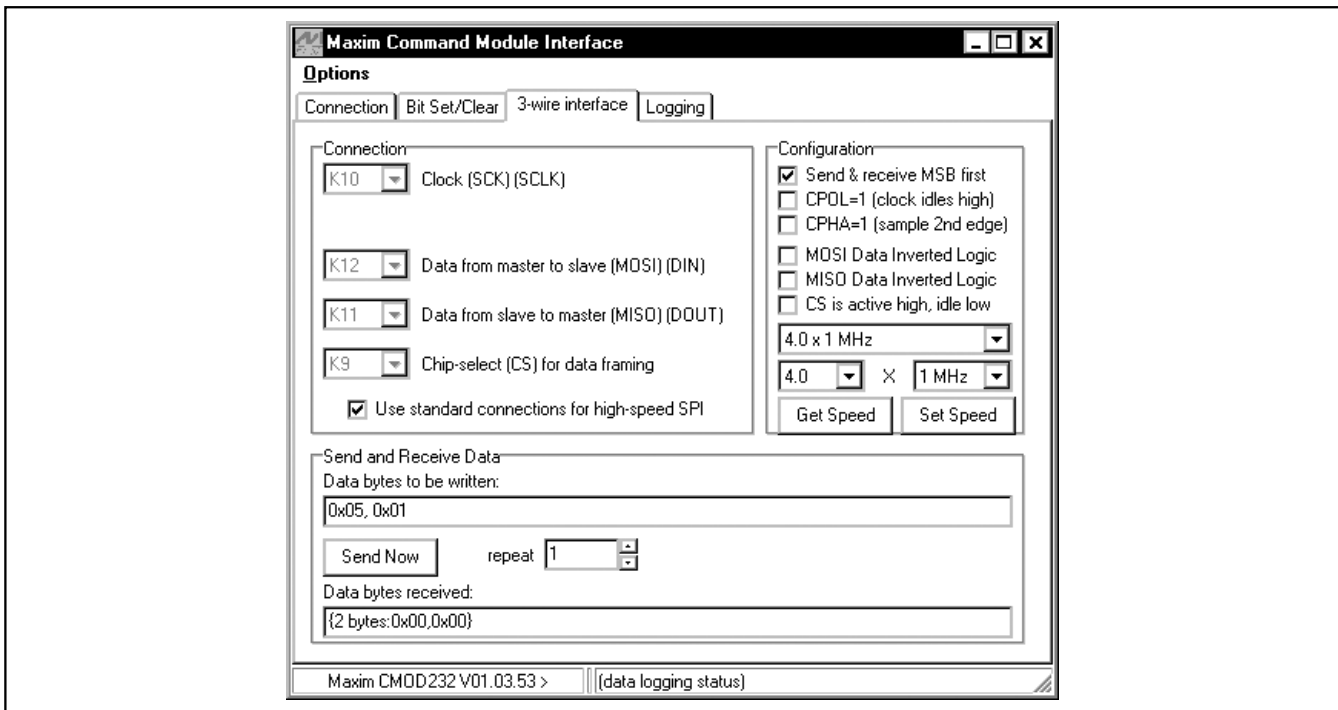


Figure 4. The above example shows a simple SPI transfer operation using the included 3-Wire Interface Diagnostics. In this example, the software is writing data (0x01h) to register address 0x05h. This sets the IDAC coarse gain to 1.

# MAX5893/MAX5894/MAX5895 Evaluation Systems/Evaluation Kits

Evaluate: MAX5893/MAX5894/MAX5895

**Table 1. Digital Input Signals**

PIN	SIGNAL NAME I-CHANNEL			PIN	SIGNAL NAME Q-CHANNEL		
	MAX5893	MAX5894	MAX5895		MAX5893	MAX5894	MAX5895
J2-39	ID11	ID13	<i>ID15</i>	J2-7	SELIQ/QD11	SELIQ/QD13	<i>SELIQ/QD15</i>
J2-37	ID10	ID12	<i>ID14</i>	J2-5	DATACLK/QD1	DATACLK/QD1	<i>DATACLK/QD1</i>
J2-35	ID9	ID11	<i>ID13</i>	J2-3	QD9	QD11	<i>QD13</i>
J2-33	ID8	ID10	<i>ID12</i>	J2-1	QD8	QD10	<i>QD12</i>
J2-31	ID7	ID9	<i>ID11</i>	J3-39	QD7	QD9	<i>QD11</i>
J2-29	ID6	ID8	<i>ID10</i>	J3-37	QD6	QD8	<i>QD10</i>
J2-27	ID5	ID7	<i>ID9</i>	J3-35	QD5	QD7	<i>QD9</i>
J2-25	ID4	ID6	<i>ID8</i>	J3-33	QD4	QD6	<i>QD8</i>
J2-23	ID3	ID5	<i>ID7</i>	J3-31	QD3	QD5	<i>QD7</i>
J2-21	ID2	ID4	<i>ID6</i>	J3-29	QD2	QD4	<i>QD6</i>
J2-19	ID1	ID3	<i>ID5</i>	J3-27	QD1	QD3	<i>QD5</i>
J2-17	ID0	ID2	<i>ID4</i>	J3-25	QD0	QD2	<i>QD4</i>
J2-15	—	ID1	<i>ID3</i>	J3-23	—	QD1	<i>QD3</i>
J2-13	—	ID0	<i>ID2</i>	J3-21	—	QD0	<i>QD2</i>
J2-11	—	—	<i>ID1</i>	J3-19	—	—	<i>QD1</i>
J2-9	—	—	<i>ID0</i>	J3-17	—	—	<i>QD0</i>

**Note:** Pins J3-15, J3-13, J3-9, J3-7, J3-5, J3-3, and J3-1 are not connected. All other pins are connected to GND. Italicized signal names indicate the default EV kit configuration.

### Reference Voltage Options

The MAX5893/MAX5894/MAX5895 require a reference voltage to set the full-scale analog output current. The DACs contain a stable on-chip bandgap reference of 1.2V that is used by default. The internal reference can be overdriven by an external reference to enhance accuracy and drift performance or for gain control.

The MAX5893/MAX5894/MAX5895 EV kits feature multiple reference options. Use the MAX5895 on-chip voltage reference by removing the shunts from jumpers JU3 and JU4. Use an external reference by removing the shunts from jumpers JU3 and JU4 and connecting a stable voltage reference at the REFIO pad. Install shunts on jumpers JU3 and JU4 to use the on-board reference (MAX6161). See Table 2 to configure the shunts across jumpers JU3 and JU4 and select the source of the reference voltage.

### Full-Scale Current

The MAX5893/MAX5894/MAX5895 require an external resistor to set the full-scale output current. The full-scale current is set to 20mA with resistor R5 (2.0kΩ). Replace resistor R5 to adjust the full-scale output current. Refer to the *Reference Input/Output* section in the MAX5895 data sheet to select different values for resistor R5.

**Table 2. Reference Voltage Selection (JU3, JU4)**

SHUNT POSITIONS	VOLTAGE REFERENCE MODE
Installed	External 1.25V reference (U2) connected to MAX5893/MAX5894/MAX5895 REFIO pin.
Not installed	MAX5893/MAX5894/MAX5895 internal 1.2V bandgap reference.
Not installed	User-supplied voltage reference at the REFIO pad (0.125V to 1.25V).

### Differential Output

The MAX5893/MAX5894/MAX5895 complementary current outputs are terminated into a differential 50Ω resistance to generate a voltage signal with a 1V<sub>p-p</sub> differential amplitude. The positive and negative output signals of the differential signal can be measured at the OUTIP/OUTIN and OUTQP/OUTQN probe locations. The differential signal is converted into a 50Ω single-ended signal with transformers T1 and T2 and can be measured at the OUTI/OUTQ SMA connectors.

# MAX5893/MAX5894/MAX5895 Evaluation Systems/Evaluation Kits

## **Reset Circuitry**

The MAX5893/MAX5894/MAX5895 EV kits feature on-board reset circuitry that places the MAX5893/MAX5894/MAX5895 SPI registers in their default state after power-up. After power-up, the registers can be manually reset by pressing switch SW1. *If this button is pressed, click the **POR Reset** button on the MAX5895 EV kit software to synchronize the GUI with the hardware.*

## **Using an Alternative SPI Interface**

The MAX5893/MAX5894/MAX5895 EV kits provide pads that allow an alternative SPI-compatible interface to be

used. Connect the CMOS-compatible interface through the CS, DIN, DOUT, SCLK, and GND pads. The interface is connected to level translators that automatically translate the interface voltages to the MAX5893/MAX5894/MAX5895 system voltages. Apply the positive rail for the input side of the translators to the VMOD pad. Use the GND pad adjacent to DVDD3.3 as the ground reference.

# MAX5893/MAX5894/MAX5895 Evaluation Systems/Evaluation Kits

Evaluate: MAX5893/MAX5894/MAX5895

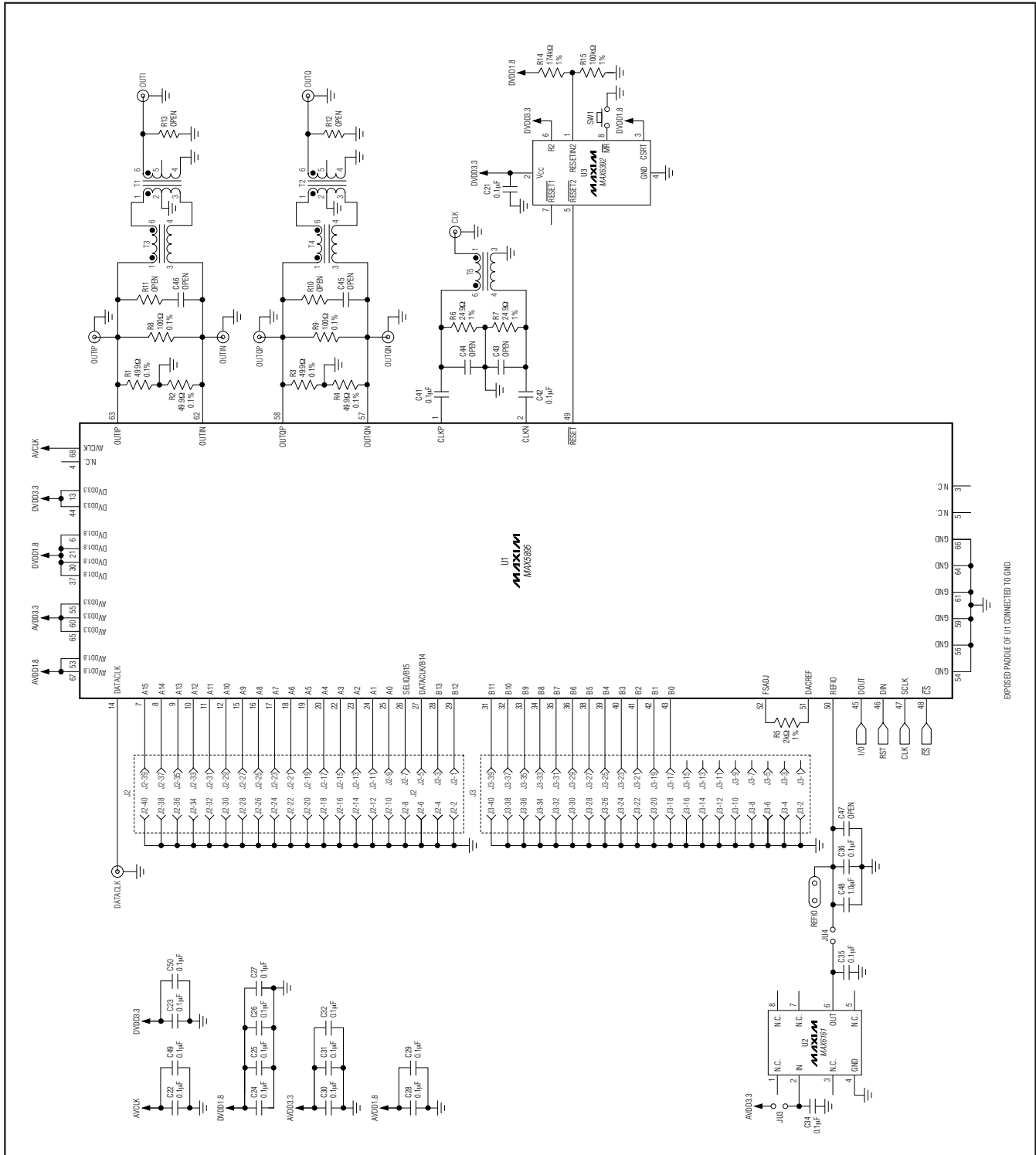


Figure 5a. MAX5895 EV Kit Schematic (Sheet 1 of 2)

# MAX5893/MAX5894/MAX5895 Evaluation Systems/Evaluation Kits

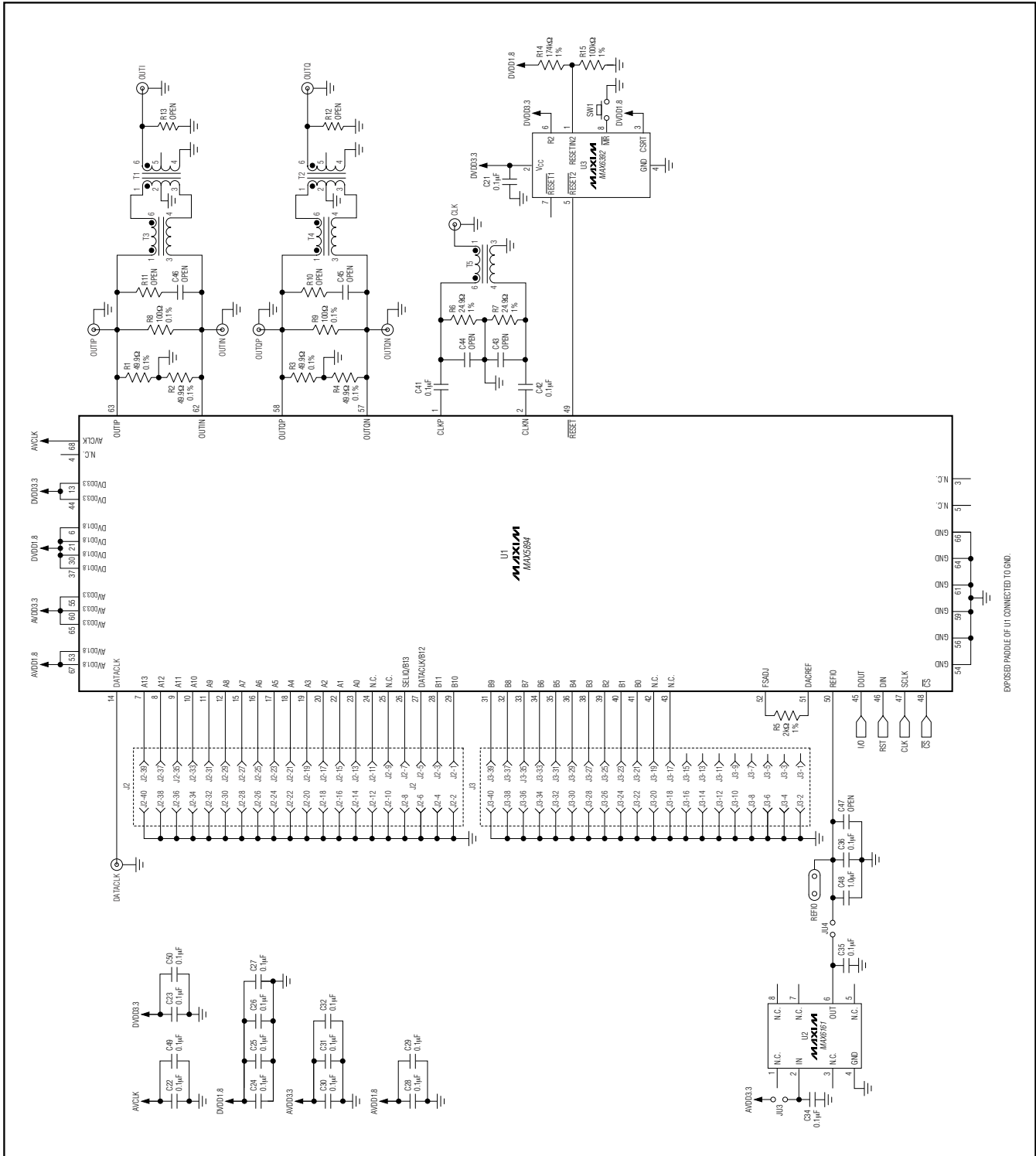


Figure 5b. MAX5894 EV Kit Schematic (Sheet 1 of 2)



# MAX5893/MAX5894/MAX5895 Evaluation Systems/Evaluation Kits

Evaluate: MAX5893/MAX5894/MAX5895

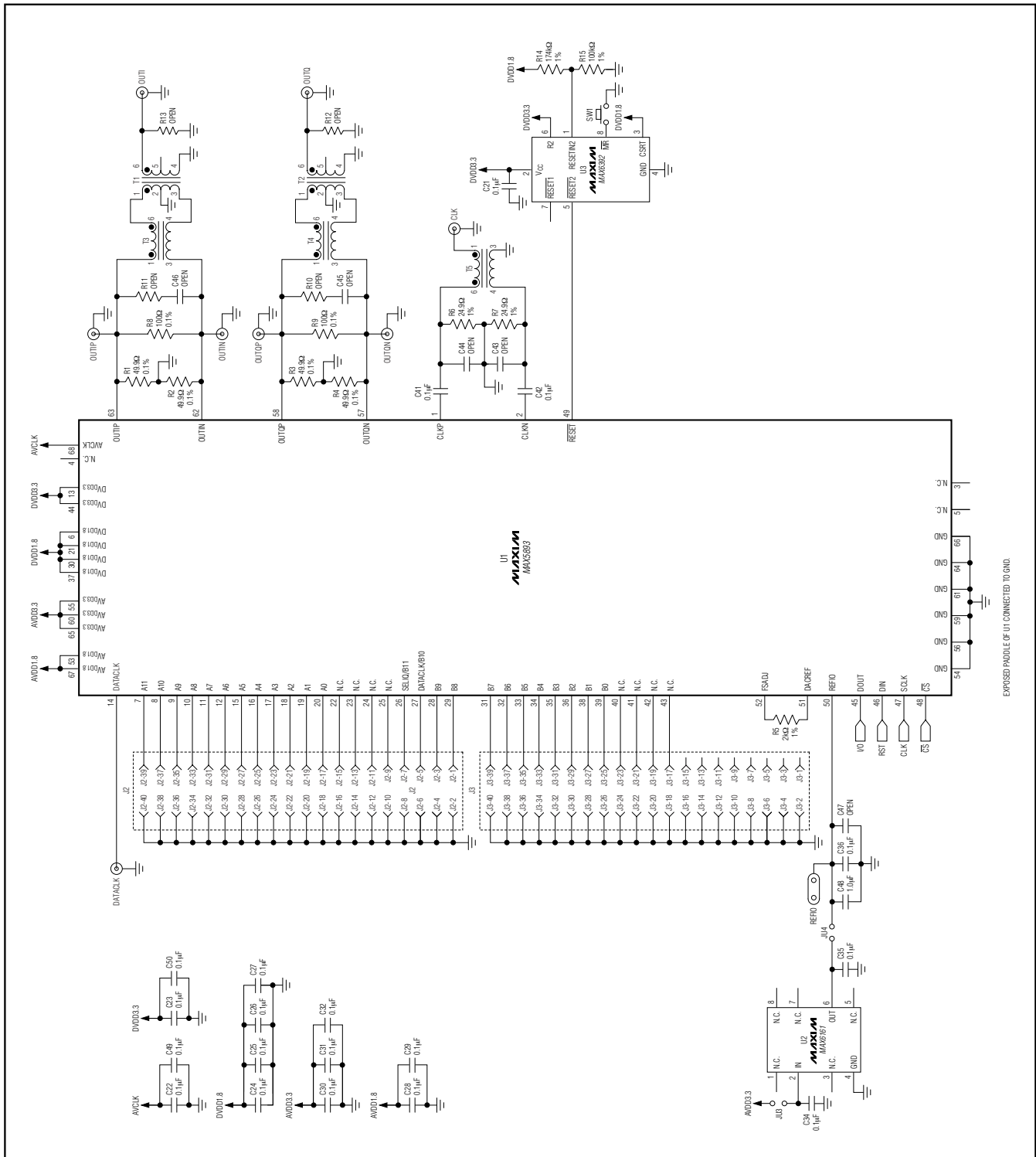


Figure 5c. MAX5893 EV Kit Schematic (Sheet 1 of 2)

# MAX5893/MAX5894/MAX5895 Evaluation Systems/Evaluation Kits

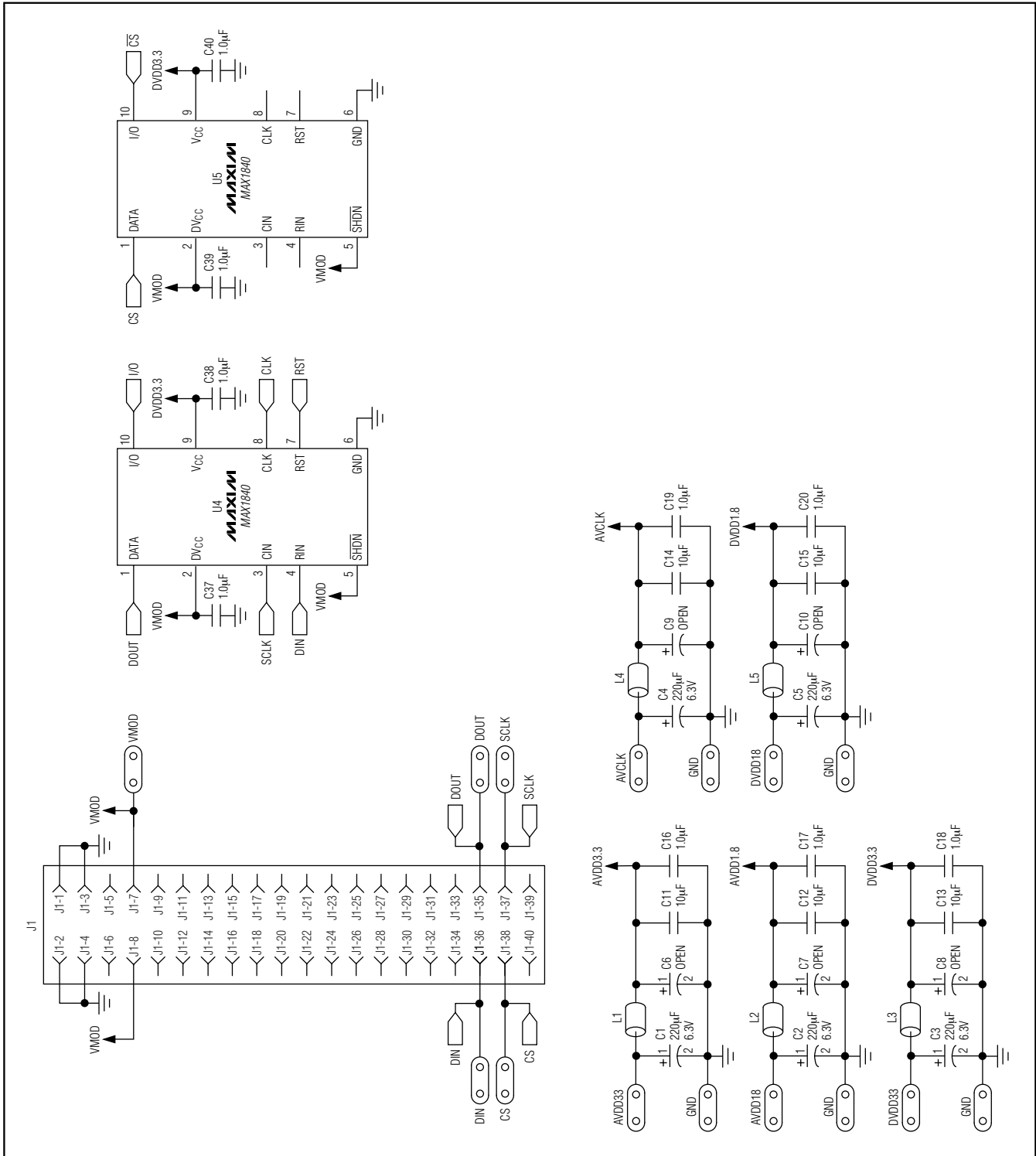


Figure 5d. MAX5893/MAX5894/MAX5895 EV Kit Schematic (Sheet 2 of 2)

# MAX5893/MAX5894/MAX5895 Evaluation Systems/Evaluation Kits

Evaluate: MAX5893/MAX5894/MAX5895

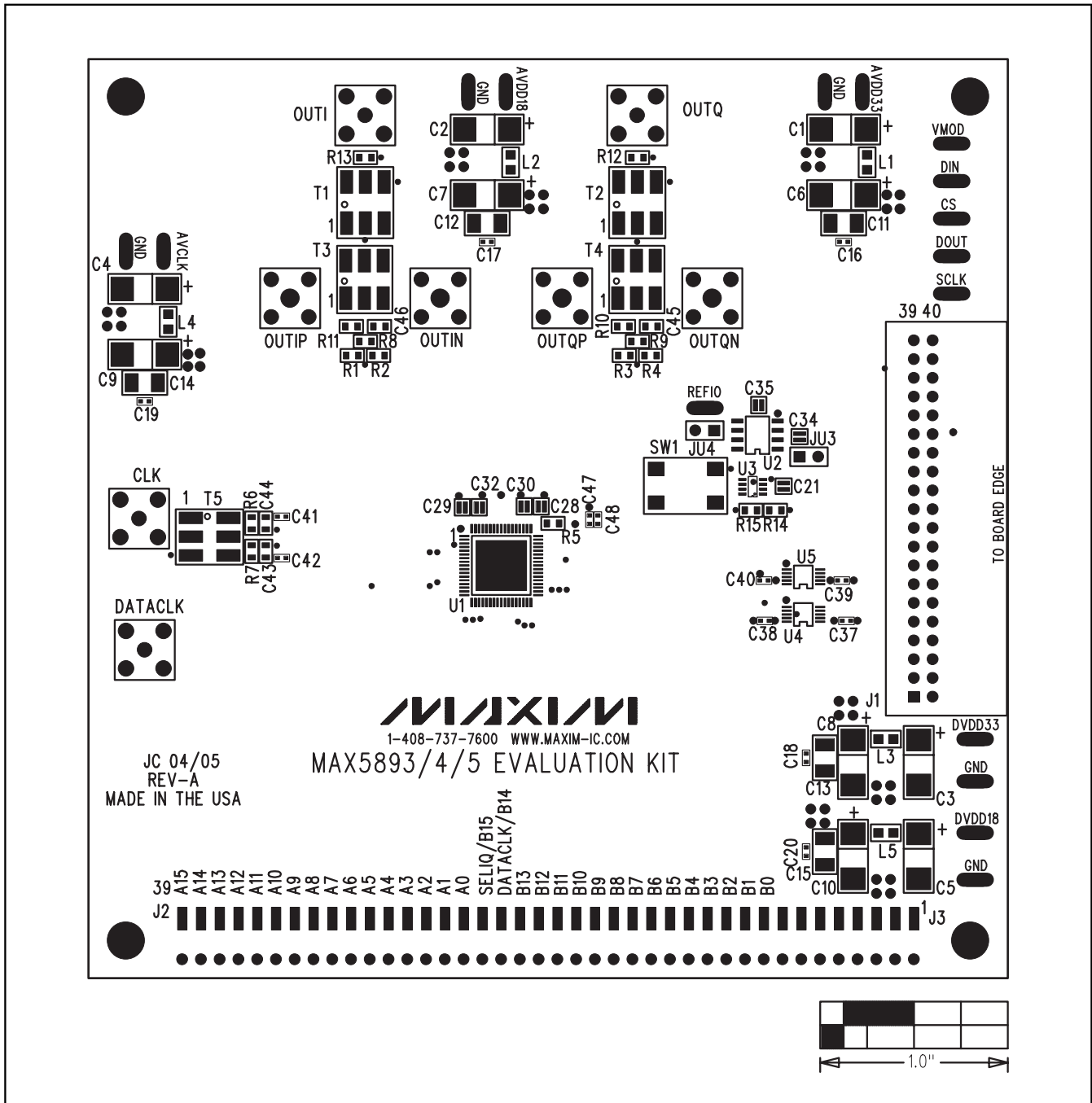


Figure 6. MAX5893/MAX5894/MAX5895 EV Kit Component Placement Guide—Component Side

# MAX5893/MAX5894/MAX5895 Evaluation Systems/Evaluation Kits

**Evaluate: MAX5893/MAX5894/MAX5895**

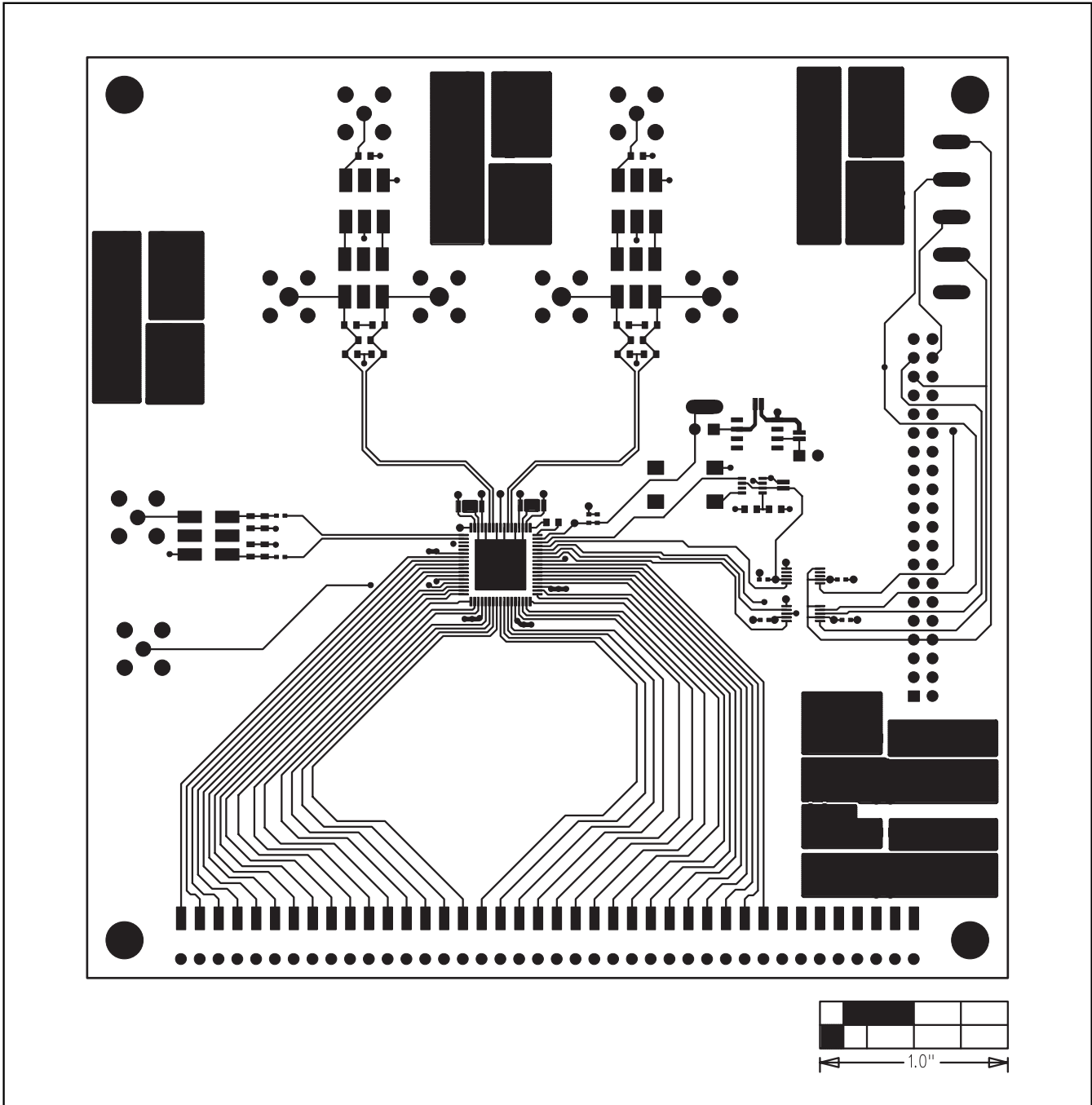


Figure 7. MAX5893/MAX5894/MAX5895 EV Kit PC Board Layout—Component Side

# MAX5893/MAX5894/MAX5895 Evaluation Systems/Evaluation Kits

Evaluate: MAX5893/MAX5894/MAX5895

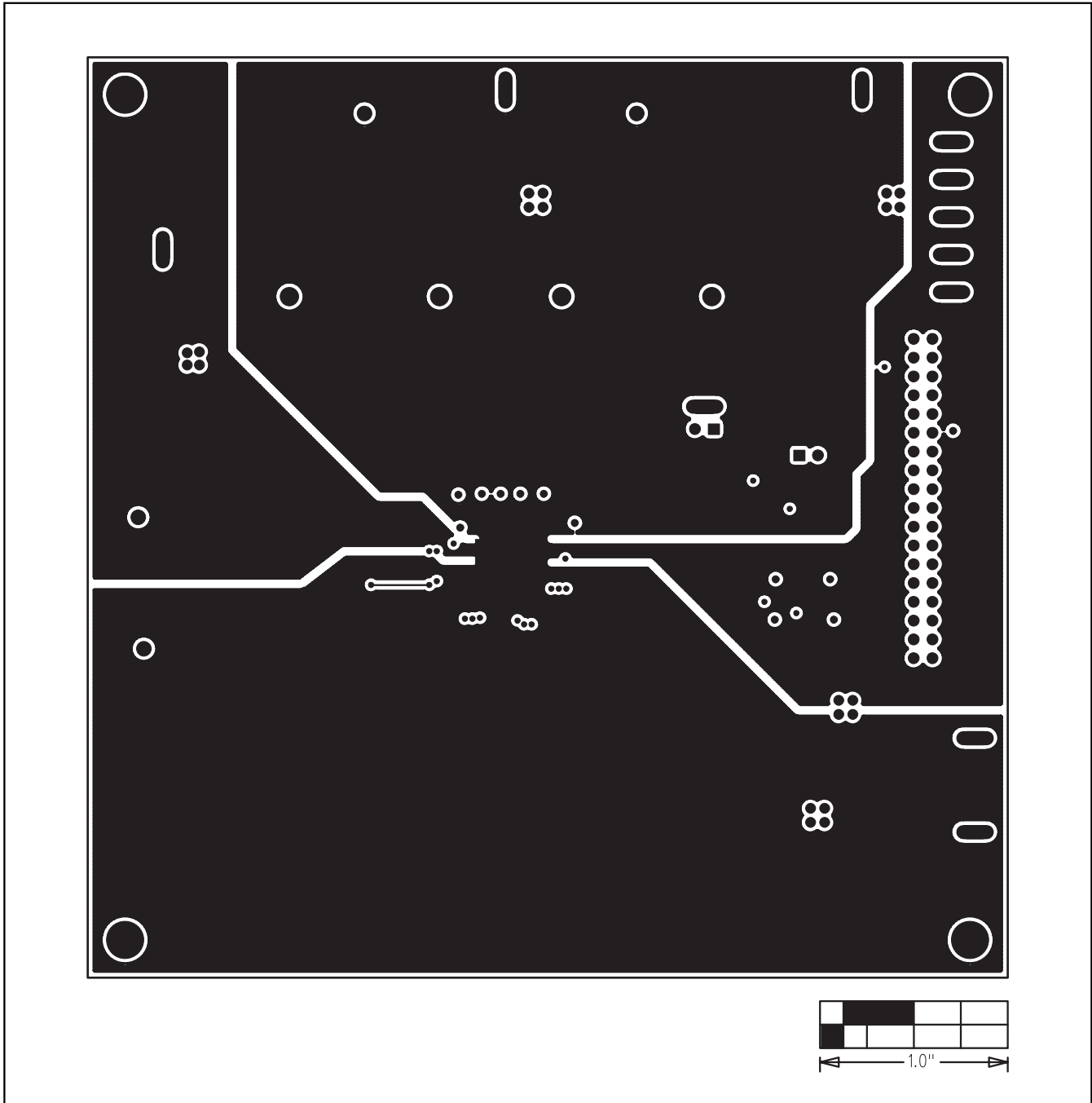


Figure 8. MAX5893/MAX5894/MAX5895 EV Kit PC Board Layout (Inner Layer 2)—Ground Planes

# MAX5893/MAX5894/MAX5895 Evaluation Systems/Evaluation Kits

Evaluate: MAX5893/MAX5894/MAX5895

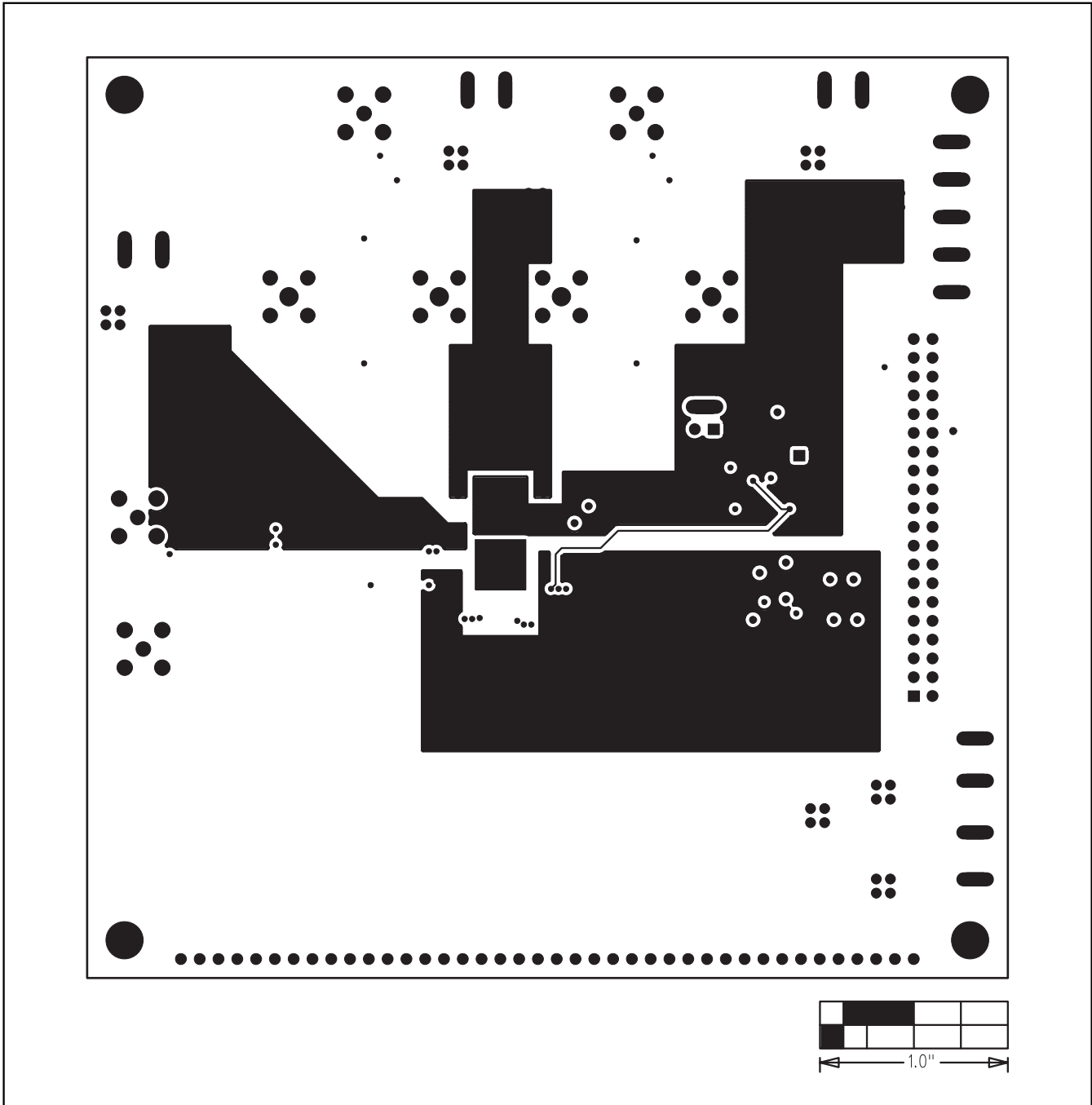


Figure 9. MAX5893/MAX5894/MAX5895 EV Kit PC Board Layout (Inner Layer 3)—Power Planes

# MAX5893/MAX5894/MAX5895 Evaluation Systems/Evaluation Kits

Evaluate: MAX5893/MAX5894/MAX5895

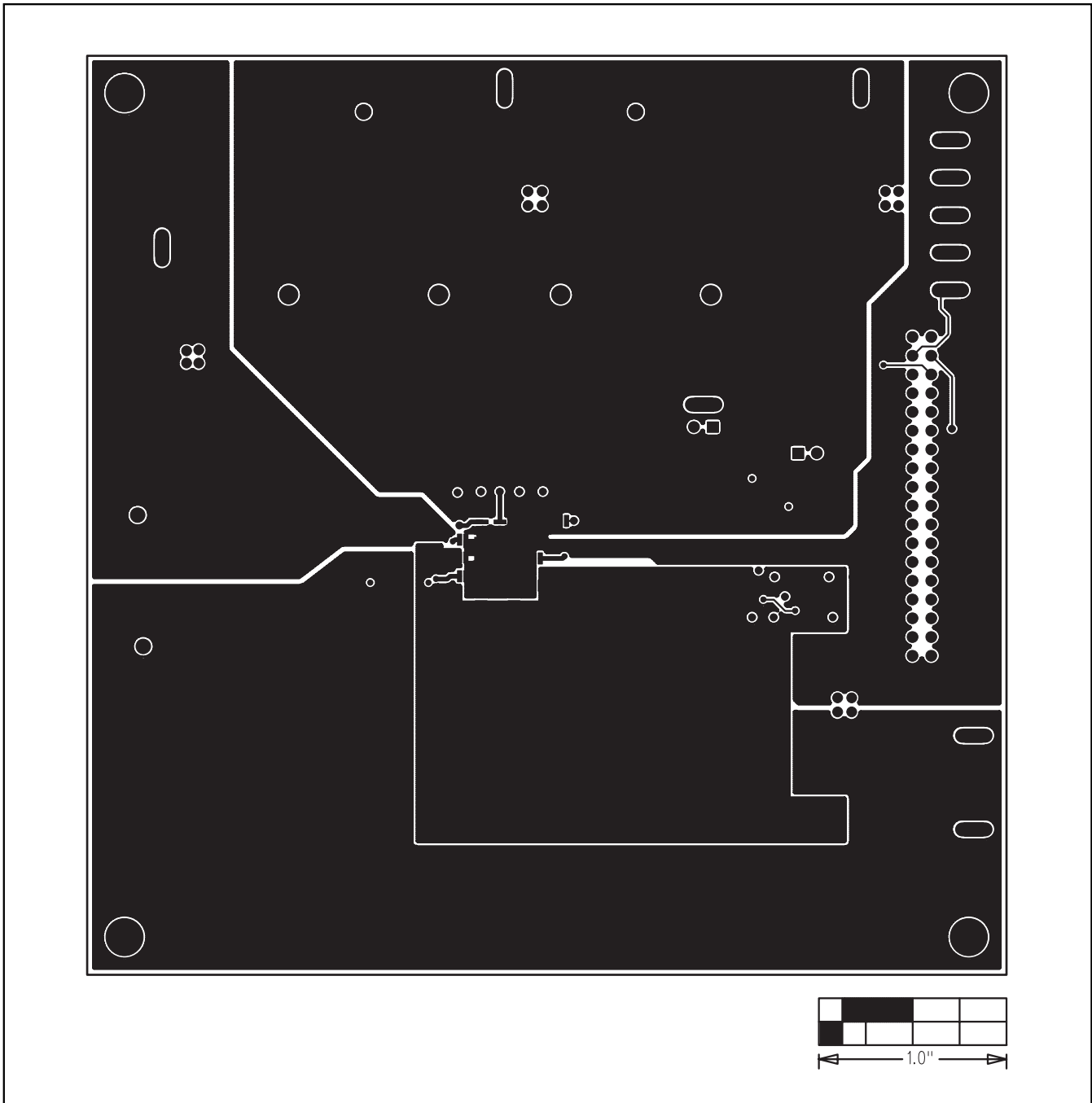


Figure 10. MAX5893/MAX5894/MAX5895 EV Kit PC Board Layout—Solder Side

# MAX5893/MAX5894/MAX5895 Evaluation Systems/Evaluation Kits

Evaluate: MAX5893/MAX5894/MAX5895

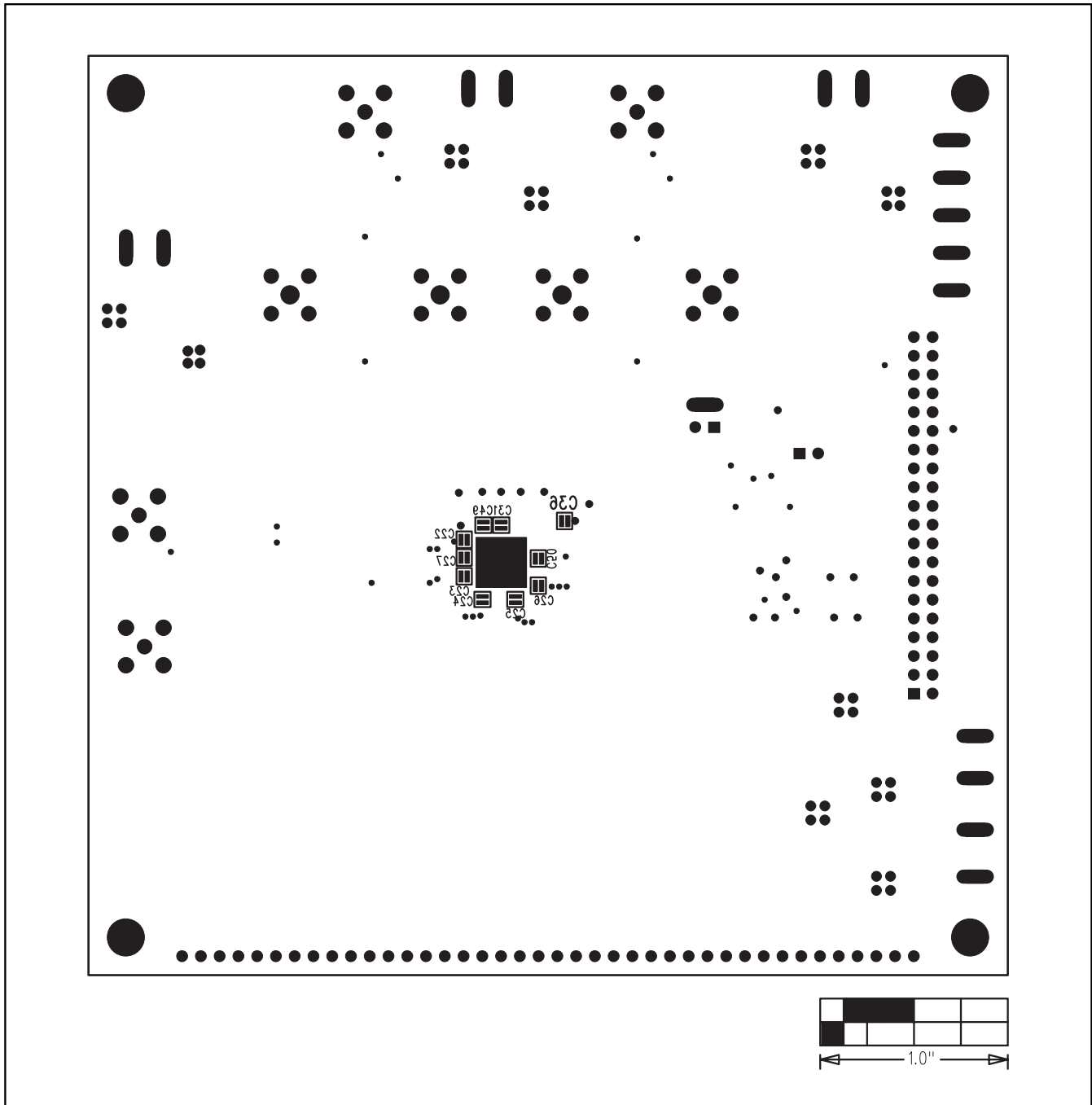


Figure 11. MAX5893/MAX5894/MAX5895 EV Kit Component Placement Guide—Solder Side

Maxim cannot assume responsibility for use of any circuitry other than circuitry entirely embodied in a Maxim product. No circuit patent licenses are implied. Maxim reserves the right to change the circuitry and specifications without notice at any time.

18 **Maxim Integrated Products, 120 San Gabriel Drive, Sunnyvale, CA 94086 408-737-7600**

© 2005 Maxim Integrated Products

Printed USA

**MAXIM** is a registered trademark of Maxim Integrated Products, Inc.