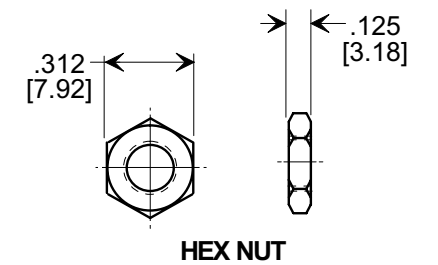
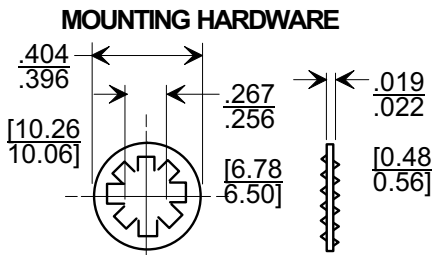
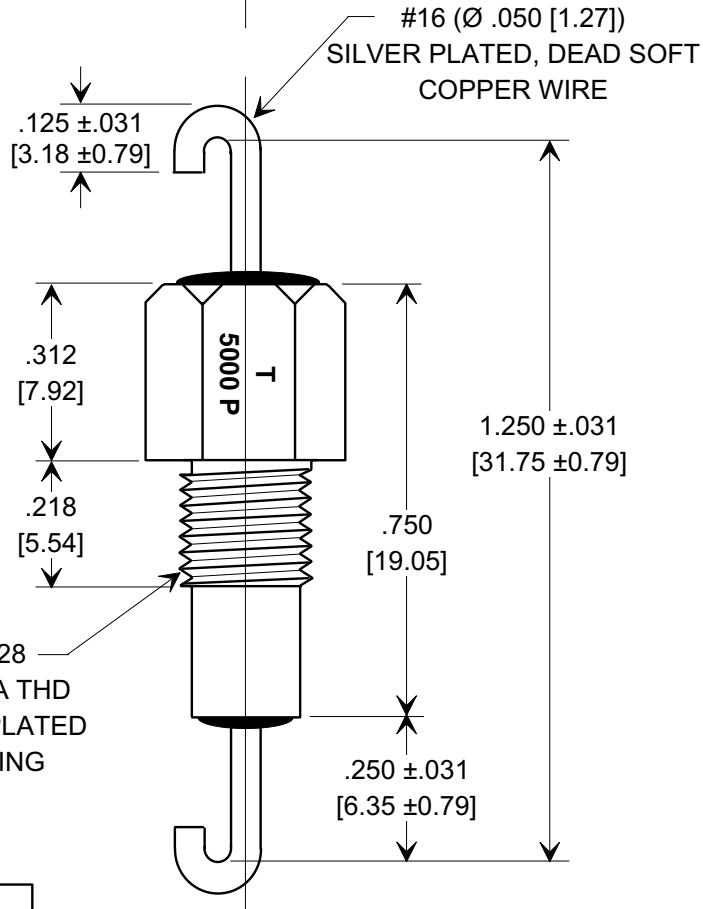
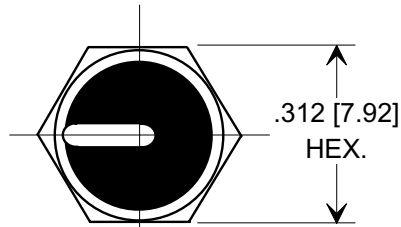
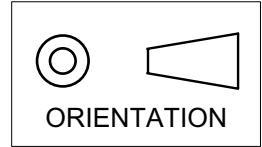


MARKETING SALES DRAWING
DIMENSIONS IN INCHES - DO NOT SCALE THIS DRAWING
DIMENSIONS IN METRIC - []

This drawing is the property of Tusonix, Inc., and may not be used, reproduced, published or disclosed to others without expressed authorization by Tusonix Inc.

Electrical Testing
per Tusonix standard
test plans and Mil-Std-202
Test Methods.



SPECIFICATIONS

| | |
|-----------------------|---------------|
| STYLE: | 327-010 |
| CAPACITANCE | 5000 pF |
| CAP. TOL. | -0% +100 % |
| TEMP. COEF. | X5U |
| WORKING VOLTAGE | 500 VDC @ 85° |
| TEMP. RANGE | -55 TO +85°C |
| I.R. MIN. @ 100 (VDC) | 10 G Ω |
| DWV (VDC) | 1500 |

NOTES:

- TUSONIX STANDARD PART NUMBER: 327-010-X5U0-502P.
TUSONIX RoHS COMPLIANT PART NUMBER: 327-010-X5U0-502P LF.
CUSTOMER MUST SPECIFY STANDARD OR RoHS PART NUMBER WHEN ORDERING.
- PART MARKING: TRADEMARK AND VARIATION NUMBER ON HEX FLATS.
STANDARD PART: BLACK INK. RoHS PART: GREEN INK.
- LOCK WASHER AND HEX NUT ARE SILVER PLATED.

REVISION RECORD

| | |
|--|---|
| Original Release C.O. 20020429-1-01 | 0 |
| ADDED NOTES 1 & 2, I.R. & DWV. S.M. 06-09-06 | 1 |
| 20060605-5-04 | 1 |

| | | |
|--|-------------------------------------|--------------------------|
| --TOLERANCES-- Unless Otherwise Specified | Title FEED-THRU CAPACITOR | |
| DECIMAL ± .015 [0.38] | Drawn S.M. 04-29-02 | Scale 3 X |
| ANGLES ± | Approved T.C. 04-29-02 | |
| TUSONIX TUCSON, ARIZONA | A | 327-010-X5U0-502P |

X-2015 Rev-0