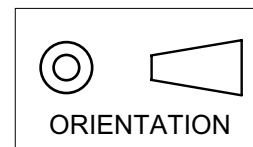
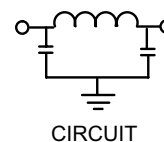
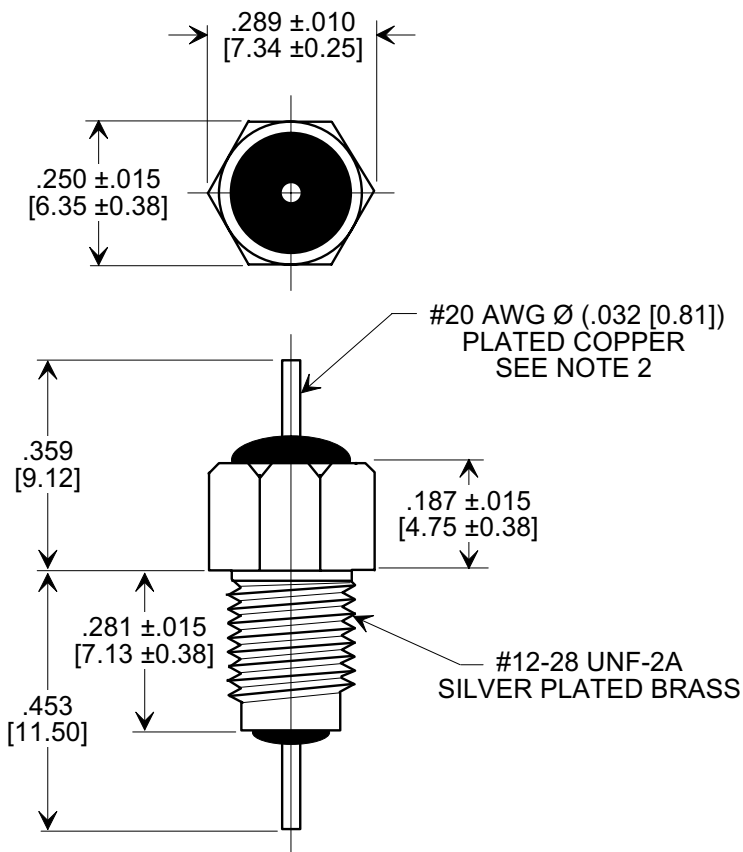


This drawing is the property of Tusonix, Inc., and may not be used, reproduced, published or disclosed to others without expressed authorization by Tusonix Inc.

MARKETING SALES DRAWING
DIMENSIONS IN INCHES - DO NOT SCALE THIS DRAWING
DIMENSIONS IN METRIC - []



Electrical Testing
per Tusonix standard
test plans and Mil-Std-202
Test Methods.



NOTES:

- TUSONIX STANDARD PART NUMBER: 4204-000.
TUSONIX RoHS COMPLIANT PART NUMBER: 4204-000 LF.
CUSTOMER MUST SPECIFY STANDARD OR RoHS PART NUMBER WHEN ORDERING.
- LEAD FINISH: STANDARD PART #: 60/40 SOLDER PLATED COPPER.
RoHS PART #: SILVER PLATED COPPER.
- PART MARKING: TRADEMARK AND VARIATION NUMBER ON HEX FLATS.
STANDARD PART: BLACK INK. RoHS PART: GREEN INK.
- SUPPLIED WITH SILVER PLATED COPPER ALLOY HEX NUT AND INTERNAL TOOTH LOCK WASHER.

MIN. CAP. (pF)	WORKING VOLTAGE (WVdc)		CURRENT IDC (A)	I.R. MIN. @ 100 (VDC)	DWV (VDC)	MINIMUM NO LOAD INSERTION LOSS (dB) AT 25°C PER MIL-STD -220			
	85°C	125 °C				10 MHz	100 MHz	1 GHz	10 GHz
1500	350	200	10	10 G Ω	700	5	45	70	70

X-2015 Rev-0	REVISION RECORD	Original Release C.O. 2898	RDN TO COMP FMT & ADDED METRIC. S.M. 04-11-00	1	ADDED NOTES 1-3, IR & DWV. S.M. 02-02-06	2	20000412-1-01	TOLERANCES unless otherwise specified		Title	
				2 PLC. DECIMAL ± //		BUSHING STYLE EMI FILTER					
				3 PLC. DECIMAL ± .031[.079]							
				ANGLES ± //		Drawn S.M. 04-11-00		Scale 3X			
TUSONIX TUCSON, ARIZONA								Approved B.M. 04-11-00		A	4204-000