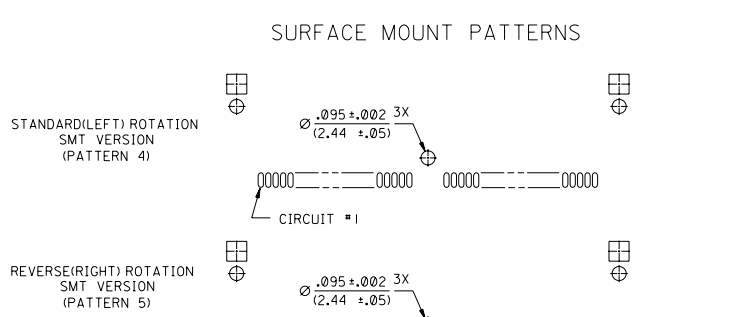
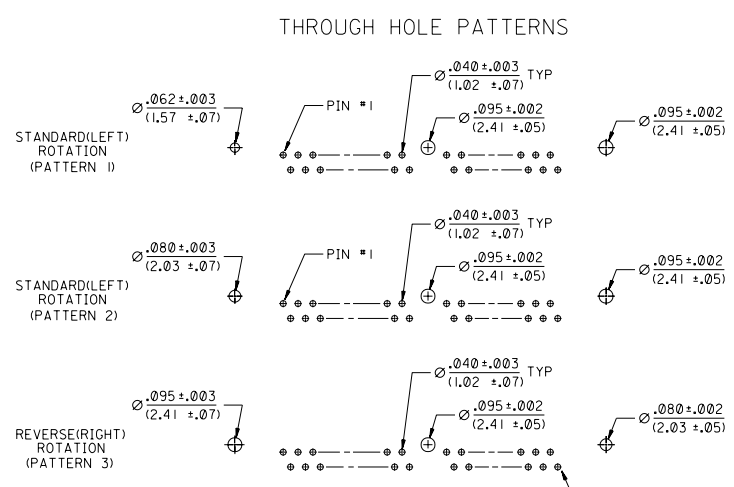


SHEET #	MODULE HEIGHT	LATCH	ROTATION	PCB PATTERN
2	.125	PLASTIC	STANDARD(LEFT)	PATTERN 1
3	.125	PLASTIC	REVERSE(RIGHT)	PATTERN 3
4	.160	PLASTIC	STANDARD(LEFT)	PATTERN 1
5	.160	PLASTIC	STANDARD(LEFT)	PATTERN 2
6	.160	PLASTIC	REVERSE(RIGHT)	PATTERN 3
7	.160	METAL	STANDARD(LEFT)	PATTERN 1
8	.160	METAL	STANDARD(LEFT)	PATTERN 2
9	.160	METAL	REVERSE(RIGHT)	PATTERN 3
10	.190	PLASTIC	STANDARD(LEFT)	PATTERN 1
11	.190	PLASTIC	STANDARD(LEFT)	PATTERN 2
12	.190	PLASTIC	REVERSE(RIGHT)	PATTERN 3
13	.190	METAL	STANDARD(LEFT)	PATTERN 1
14	.190	METAL	STANDARD(LEFT)	PATTERN 2
15	.190	METAL	REVERSE(RIGHT)	PATTERN 3
16	.250	PLASTIC	STANDARD(LEFT)	PATTERN 1
17	.250	PLASTIC	STANDARD(LEFT)	PATTERN 2
18	.250	PLASTIC	REVERSE(RIGHT)	PATTERN 3
19	.250	METAL	STANDARD(LEFT)	PATTERN 1
20	.250	METAL	STANDARD(LEFT)	PATTERN 2
21	.250	METAL	REVERSE(RIGHT)	PATTERN 3
22	.290	PLASTIC	STANDARD(LEFT)	PATTERN 1
23	.290	PLASTIC	STANDARD(LEFT)	PATTERN 2
24	.290	PLASTIC	REVERSE(RIGHT)	PATTERN 3
25	.290	METAL	STANDARD(LEFT)	PATTERN 1
26	.290	METAL	STANDARD(LEFT)	PATTERN 2
27	.290	METAL	REVERSE(RIGHT)	PATTERN 3

SHEET #	MODULE HEIGHT	LATCH	ROTATION	PCB PATTERN
28	.160	METAL	STANDARD(LEFT)	PATTERN 4
29	.160	METAL	REVERSE(RIGHT)	PATTERN 5
30	.190	METAL	STANDARD(LEFT)	PATTERN 4
31	.190	METAL	REVERSE(RIGHT)	PATTERN 5
32	.250	METAL	STANDARD(LEFT)	PATTERN 4
33	.250	METAL	REVERSE(RIGHT)	PATTERN 5
34	.290	METAL	STANDARD(LEFT)	PATTERN 4
35	.290	METAL	REVERSE(RIGHT)	PATTERN 5



### P.C. BOARD HOLE PATTERNS

35	D
34	D
33	D
32	D
31	D
30	D
29	D
28	D
27	D
26	D
25	D
24	D
23	D
22	D
21	D
20	D
19	D
18	D
17	D
16	D
15	D
14	D
13	D
12	D
11	D
10	D
9	D
8	D
7	D
6	D
5	D
4	D
3	D
2	D
1	D

10	D		
9	D		
8	D	D	LEAD FREE LCP2004-1282 RWWHITE 04/03/04
7	D	C1	VOID CKT SIZES ECN #JDT1999-0200 DMORGAN 98/10/07
6	D	C	CHANGED -8403 PER ECN#1091302 SPIEWAK 97/11/15
5	D		
4	D	B	REVISED PER ECN 1090613 GMV 12-22-94
3	D		
2	D	A	RELEASED PER ECR 031660 AMD 11/11/93
1	D		

SALES ASSEMBLY  
.05 PITCH RIGHT ANGLE  
SIMM SOCKET FAMILY

MOLEX INCORPORATED  
1000 W. 14TH AVENUE  
EVANSTON, ILL. 60120

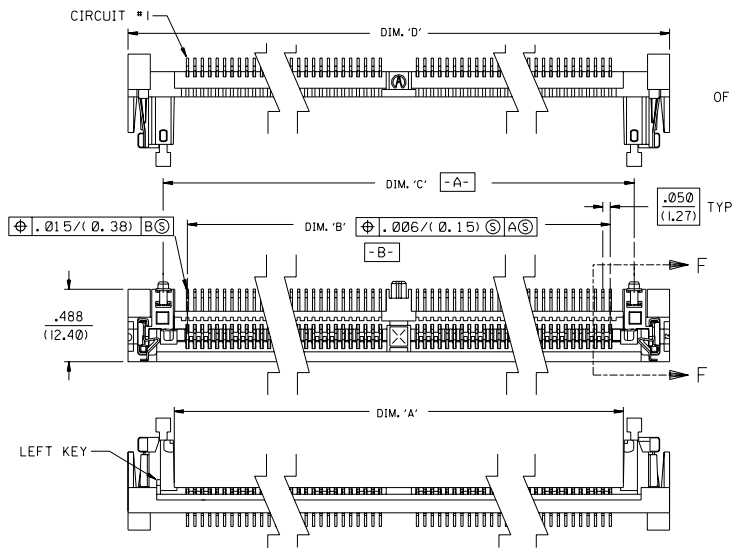
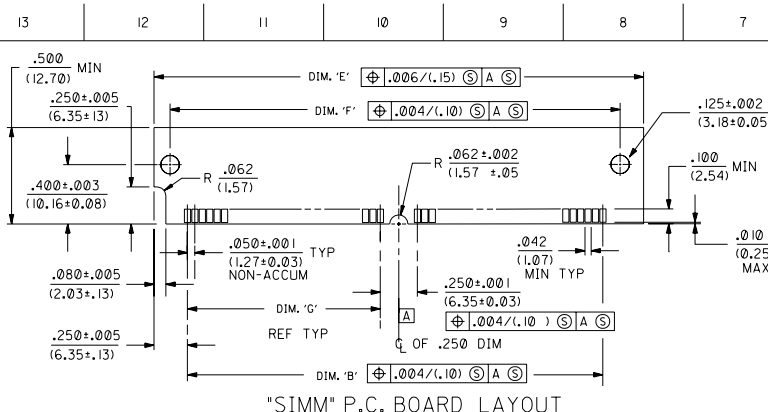
DATE: 11/11/93  
SHEET NO.: 1 OF 35

SEE CHART SDA-78968

SCALE: 2:1

APPD. BY: AMD

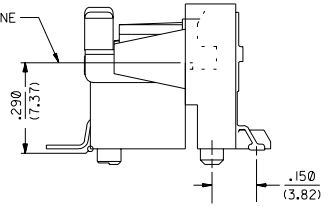
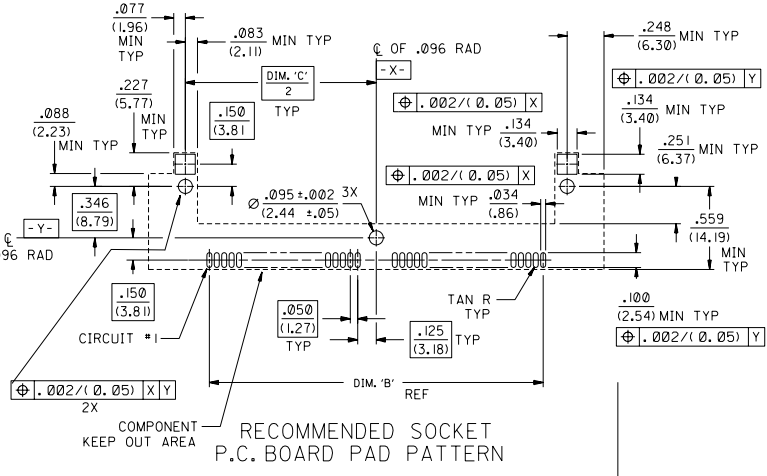
NO DRAWING CONTAINS INFORMATION THAT IS PROPRIETARY TO MOLEX INC. AND SHOULD NOT BE USED WITHOUT WRITTEN PERMISSION.



NOTES:  
 1. CARD SLOT ACCEPTS .050 +.004/-.003 P.C. BOARDS (MEASURED OVER P.C. PADS).  
 2. PRODUCT SPEC PS-78968 APPLIES

MATERIALS:  
 HOUSING- LCP, GLASS FILLED, 94V-0, COLOR: BLACK.  
 TERMINAL- PHOSPHOR BRONZE  
 PLATING- SEE CHART  
 LATCH- STAINLESS STEEL  
 SMT CLIP- PHOSPHOR BRONZE PLATED WITH TIN

\*THE PRIMARY SHIPPING CARTON WILL BE LABELED \*COMPLIANT TO ROHS DIRECTIVE 2002/95/EC AND ELV ANNEX II OF DIRECTIVE 2000/53/EC. CARTONS WITHOUT THIS LABEL MAY CONTAIN PRODUCT WITH LEAD.



CIRCUITS	DIM. 'A'	DIM. 'B'	DIM. 'C'	DIM. 'D'	DIM. 'E'	DIM. 'F'	DIM. 'G'	ENG. NUMBER TIN PLATING	EDP NUMBER TIN PLATING	ENG. NUMBER GOLD PLATING	EDP NUMBER GOLD PLATING
40	2.320/(58.93)	2.150/(54.61)	2.474/(62.84)	2.950/(74.93)	2.650/(67.31)	2.384/(60.55)	.950/(24.13)	-4083	I5-82-1652	-4084	I5-82-1659
64	3.520/(89.41)	3.350/(85.09)	3.674/(93.32)	4.150/(105.41)	3.850/(97.79)	3.584/(91.03)	1.550/(39.37)	-6483	I5-82-1653	-6484	I5-82-1660
68	3.720/(94.49)	3.550/(90.17)	3.874/(98.40)	4.350/(110.49)	4.050/(102.87)	3.784/(96.12)	1.650/(41.91)	-6883	I5-82-1654	-6884	I5-82-1661
72	3.920/(99.57)	3.750/(95.25)	4.074/(103.48)	4.550/(115.57)	4.250/(107.95)	3.984/(101.19)	1.750/(44.45)	-7283	I5-82-1655	-7293	I5-82-0328
80	4.320/(109.73)	4.150/(105.41)	4.474/(113.64)	4.950/(125.73)	4.650/(118.11)	4.384/(111.35)	1.950/(49.53)	-8083	I5-82-1656	-8084	I5-82-1663
84	4.520/(114.81)	4.350/(109.22)	4.674/(118.72)	5.150/(130.81)	4.850/(123.19)	4.584/(116.43)	2.050/(52.07)	-8483	I5-82-1657	-8484	I5-82-1664
100	5.320/(135.13)	5.150/(130.81)	5.474/(139.04)	5.950/(151.13)	5.650/(143.51)	5.384/(136.75)	2.450/(62.23)	-1083	I5-82-1658	-1084	I5-82-1665

ENG. NUMBER TIN PLATING	EDP NUMBER TIN PLATING	ENG. NUMBER GOLD PLATING	EDP NUMBER GOLD PLATING
-4083	I5-82-1652	-4084	I5-82-1659
-6483	I5-82-1653	-6484	I5-82-1660
-6883	I5-82-1654	-6884	I5-82-1661
-7283	I5-82-1655	-7293	I5-82-0328
-8083	I5-82-1656	-8084	I5-82-1663
-8483	I5-82-1657	-8484	I5-82-1664
-1083	I5-82-1658	-1084	I5-82-1665

D D SEE SHEET I

A A SEE SHEET I

MFG, SHL, REV, LTR, REVISIONS

REVISIONS

REVISION ONLY ON CAD SYSTEM

TITLE: SALES ASSM, METAL LATCH 290 MOD. HGT., LEFT (STD.) KEY, RIGHT ANGLE SMT SIMM SOCKET

MOLEX INCORPORATED

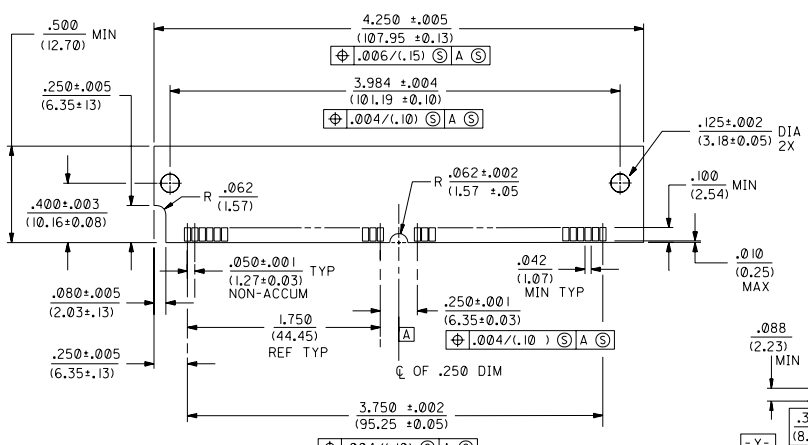
DA C

SEE CHART SDA-78968

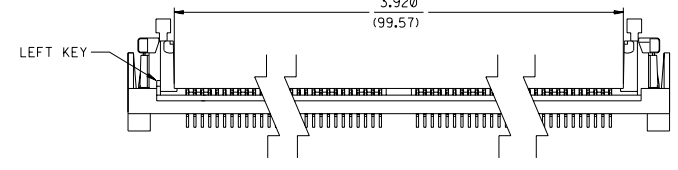
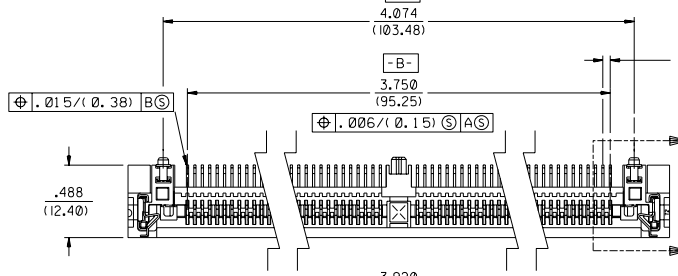
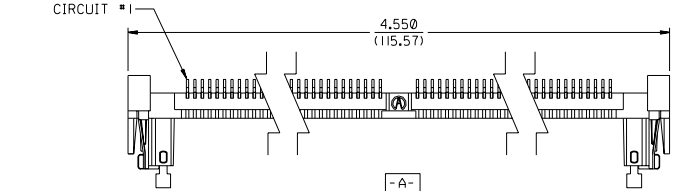
DATE: 11/11/93

SCALE: 2:1

13 12 11 10 9 8 7 6 5 4 3 2 1



"SIMM" P.C. BOARD LAYOUT

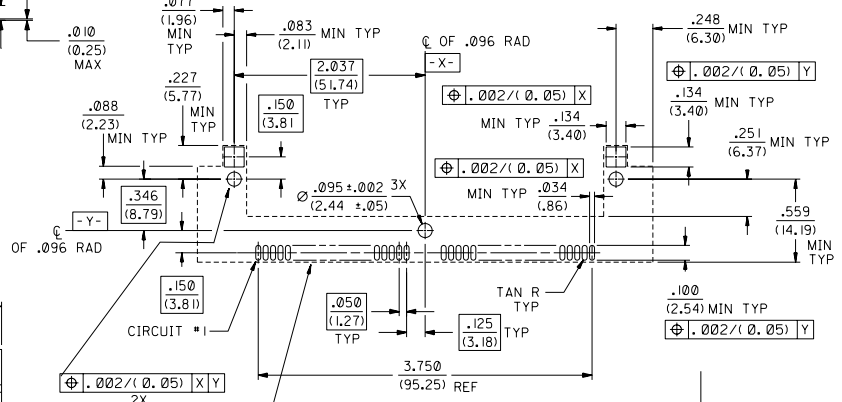


NOTES:  
 1. CARD SLOT ACCEPTS .050 +.004/-.003 P.C. BOARDS (MEASURED OVER P.C. PADS).  
 2. PRODUCT SPEC PS-78968 APPLIES

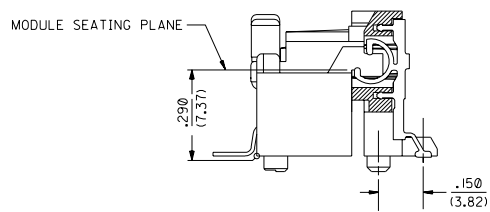
MATERIALS:  
 HOUSING- LCP , GLASS FILLED, 94V-0, COLOR: BLACK.  
 TERMINAL- PHOSPHOR BRONZE, POST PLATED  
 30 μ IN. (1760 μ M) MINIMUM GOLD IN CONTACT AREA AND  
 150 μ IN. (13810 μ M) MINIMUM TIN IN TAIL AREA OVER  
 75 μ IN. (1910 μ M) MINIMUM NICKEL OVERALL.

LATCH- STAINLESS STEEL  
 SMT CLIP- PHOSPHOR BRONZE PLATED WITH .000200/(.00508) MINIMUM  
 TIN OVER .000050/(.00127) MINIMUM NICKEL OVERALL.

\*THE PRIMARY SHIPPING CARTON WILL BE LABELED \*COMPLIANT TO  
 ROHS DIRECTIVE 2002/95/EC AND ELV ANNEX II OF DIRECTIVE  
 2000/53/EC. CARTONS WITHOUT THIS LABEL MAY CONTAIN PRODUCT WITH LEAD.



RECOMMENDED SOCKET P.C. BOARD PAD PATTERN



SECTION 'F'-'F'  
SCALE 4:1

C	LEAD FREE UCP2004-1582 RWHITE 04/03/04
B	REVISED PER ECR U30019 CMT 8-2-95
A	ADD EDP # PER ECR U31533 AMD 10-20-93
I	X-RELEASE PER ECR U31378 AMD 9-27-93

MFG. SHL. REV. LTR. REVISIONS	
REVISION ONLY ON CAD SYSTEM	
DIMENSIONS SHOWN IN METRIC INCH	
UNLESS OTHERWISE SPECIFIED	
TOLERANCES: ANGULAR ± 1/2°	
3 PLACE	± .010
2 PLACE	± .014 ± 0.25
1 PLACE	± 0.36
DRAFT WHERE APPLICABLE MUST REMAIN WITHIN DIMENSIONS	
DRWG. NO.	15-82-0328
FILE NAME	SDA-78968-7293
APPD. BY	DA
SCALE	2:1

13 12 11 10 9 8 7 6 5 4 3 2 1