

Please note that the data given here has been taken from the online catalog. For comprehensive information and data, please refer to the user documentation at <http://www.download.phoenixcontact.com>. The General Terms and Conditions of Use apply to Internet downloads.

► Extract from the online catalog



Attachment plug with Lambda/4 technology as surge protection for coaxial signal interfaces. Connection: N connectors on 7/16 female connector/male connector

The illustration shows a combination of versions C7/16-LAMBDA/- 4-2.0-BS-SET, -4-2.0-BB-SET and CN-LAMBDA/4-2.0-BB

Order No.	2839046
Ord designation	C7/16-LAMBDA/4-2.0-BS-SET
EAN	4017918177256
Pack	1 Pcs.
Customs tariff	85363010
Catalog page information	Page 136 (TT-2005)

► Technical data

General

Color	Nickel
Ambient temperature (operation)	-40 ° C ... 100 ° C
Mounting type	Adapter
Design	Attachment plug
Degree of protection	IP55
Direction of action	Ader-Schirm/Erde

Protective circuit

IEC category	C2
IEC category	C3
IEC category	D1
VDE requirement class	C2
VDE requirement class	C3
VDE requirement class	D1
Nominal current I_N	5 A
Nominal discharge surge current I_n (8/20) μ s (Core-Earth)	20 kA
Output voltage limitation at 1 kV/ μ s (Core-Earth) spike	≤ 10 V
Output voltage limitation at 1 kV/ μ s (Core-Shield) spike	≤ 10 V
Output voltage limitation at 1 kV/ μ s (Core-Earth) static	≤ 10 V
Residual voltage at I_n , (conductor-ground)	≤ 20 V
Protection level Up (Core-Earth)	≤ 20 V
Input attenuation aE, asym.	0.3 dB (from 1.7 to 2.3 GHz 50 system)
Standing wave ratio SWR (50 Ohm system)	≤ 1.7 MHz ... 2.3 MHz
Permissible HF power $P_{max.}$ at SWR=xx (50 Ohm system)	≤ 400 W (when SWR = 1.2 in 50-Ohm system)
Permissible HF power $P_{max.}$ at SWR=xx (50 Ohm system)	≤ 500 W (when SWR = 1.0 in 50 Ohm system (2 GHz))

General

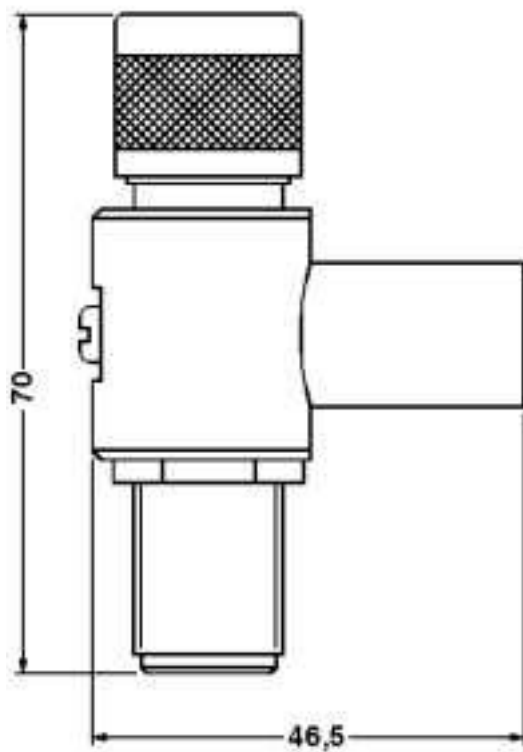
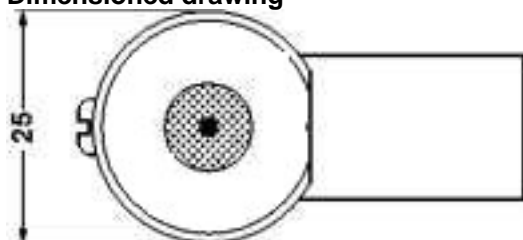
Type of connection	7/16 connector
Connection type IN	7/16 connector
Connection type OUT	7/16 connector

Connection, protective circuit

Standards/regulations	Draft IEC 64644-1
Standards/regulations	E VDE 0845-3-1

► Drawings

Dimensioned drawing





► **Additional products**

Item	Designation	Description
Assembly		
2818135	CN-UB/MP	Mounting plate for CN-UB...

► Address

PHOENIX CONTACT GmbH & Co. KG
Flachsmarktstr. 8
32825 Blomberg
Germany
Phone +49 5235 3 00
Fax +49 5235 3 1200
<http://www.phoenixcontact.com>
Phoenix Contact
Technical modifications reserved;