

PRODUCT NUMBER
10007607-YXX-XXLF

WHEN REQUIRED, ADD SUFFIX LETTER "LF"
INDICATES THE PRODUCT IS RoHS COMPATIBLE
SEE NOTE 5

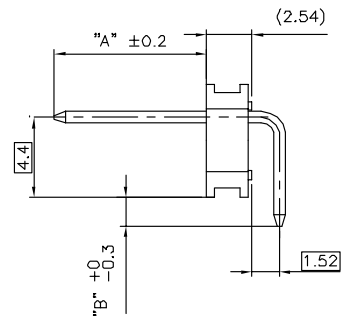
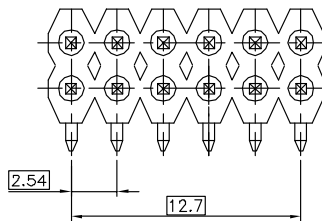
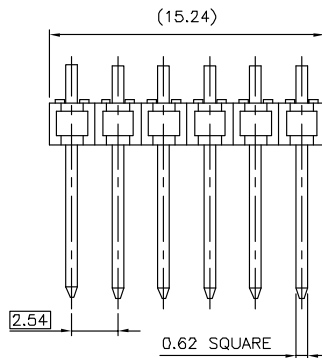
TOTAL NB OF POSITIONS 02 TO 36

STYLE	DIM "A"	DIM "B"
01	5.8	2.5
02	8.5	1.6
03	11.0	2.5

PLATING

8 = 0.38µm GOLD/GXT ON CONTACT AREA
3.81µm TIN-LEAD ON TAIL
4 = 2.0µm TIN MIN FULL PLATED

- WHEN "LF" IS REQUIRED, 2µm MATTE
TIN OVER 1.27µm MIN NICKEL IS
PROVIDED INSTEAD OF TIN-LEAD



NOTES:

- HOUSING MAT'L : HIGH TEMPERATURE THERMOPLASTIC. UL94V-0 COLOR: BLACK
- PIN MATERIAL : PHOSPHOR BRONZE
- 12N MIN RETENTION IN EITHER DIRECTION
- PRODUCT PACKAGED IN POLY BAGS.
- RoHS COMPATIBLE PRODUCT SPECIFICATIONS

a - MANUFACTURING PROCESS COMPATIBILITY

- THE HOUSING WILL WITHSTAND EXPOSURE TO 260°C ±5°C SOLDER BATH TEMPERATURE FOR 5 SECONDS IN A WAVE SOLDER APPLICATION WITH A 1.6mm MIN THICK CIRCUIT BOARD.

b - LABELLING:

- MEETS PACKAGING SPECS AS PER GS-14-920

c - LEGAL STATEMENT : SEE GS-22-008

mat'l. code		surface		tolerance		projection	product family		
		ISO 1302	ISO 446	ISO 1101	ISO 1101		BSTIK		
Ltr	ecn no	dr	date		tolerances unless otherwise specified		title		
A	F06-0109	LMU	06.01.17		angles linear		HDR SR RA		
B	F06-0207	LMU	06.07.27		mm		BODY DR		
C	F07-0182	LMU	07.05.09		scale 5:1		dwg no		
D	F08-0148	RTR	08.03.31	dr	L.MULIN	02.09.23	sheet 1 of 1 size		
E	F10-0059	LMU	10.05.31	engr	J.COMPAGNON	02.09.23	A3		
sheet index		revision sheet		chr		appd		type	
								CUSTOMER Drawing	

PDM: Rev:E

STATUS: Released

Printed: Jun 02, 2010



FCIconnect.com

Copyright FCI

form: A3