

**Tyco / Electronics**  
**Raychem Circuit Protection**  
 308 Constitution Drive  
 Menlo Park, CA 94025-1164  
 Phone: 800-227-4856  
 Fax: 800-227-4866

**PolySwitch®**  
**PTC Devices**  
 Overcurrent Protection Device

**PRODUCT: TS250-130-RC-B-0.5**

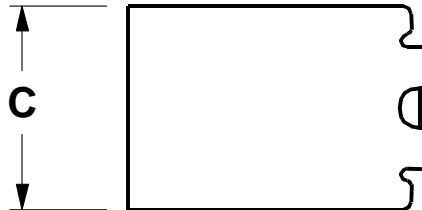
DOCUMENT: SCD 23195  
 PCN: 938478  
 REV LETTER: G  
 REV DATE: MARCH 19, 2003  
 PAGE NO.: 1 OF 1

**Specification Status: RELEASED**

**Max Electrical Rating at 20°C**

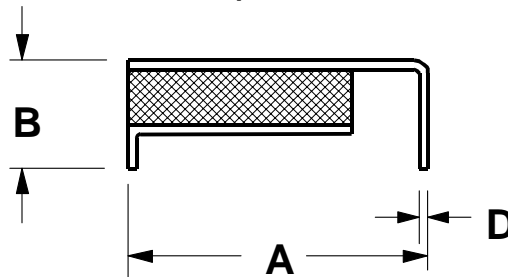
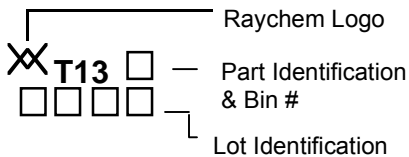
Operating Voltage: 60V<sub>DC</sub>  
 Fault Voltage: 250V<sub>RMS</sub> / 600V<sub>RMS</sub>  
 Interrupt Current: 3A<sub>RMS</sub> / 1A<sub>RMS</sub>

**Terminal Material:** Tin Plated Brass

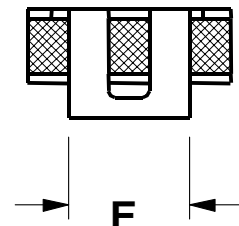


Top View

**Marking:**



Side View



End View

**TABLE I. DIMENSIONS:**

	A		B		C		D	E
	MIN	MAX	MIN	MAX	MIN	MAX	NOM	NOM
mm:	8.5	9.4	--	3.4	--	7.4	0.3	3.8
in:	(0.335)	(0.370)	--	(0.135)	--	(0.290)	(0.011)	(0.150)

**TABLE II. PERFORMANCE RATINGS @ 20°C (unless otherwise noted):**

I HOLD (A)	RESISTANCE (Ω)			TIME TO TRIP(s) @ 1A		OPERATING TEMPERATURE (°C)		POWER DISSIPATION (W)
	R MIN	R MAX	R <sub>1 MAX</sub> *	TYP	MAX	MIN	MAX	TYP
20°C	7.0	10.0	17.0	1.1	2.0	-40	85	1.1

\*Maximum device resistance at 20°C measured 1 hour post trip.

**Additional Ratings @ 20°C**

Resistance Matched: 0.5 Ohm  
 Lightning Withstand: ITU at 1.5kV

Agency Recognition: UL, CSA, TUV  
 Reference Documents: PS300

Precedence: This specification takes precedence over documents referenced herein.  
 Effectivity: Reference documents shall be the issue in effect on the date of invitation for bid.

CAUTION: Operation beyond the rated voltage or current may result in rupture, electrical arcing or flame.