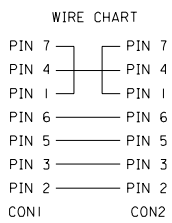


NOTE:  
 PHYSICAL  
 1. INNER MOLD WITH PE RESIN 887800008;  
 OUTER MOLD WITH BLACK PVC RESIN 887800019.  
 2. INNER MOLD WITH PE RESIN 887800008;  
 OUTER MOLD WITH BLACK PVC RESIN 887800042.  
 ELECTRICAL PERFORMANCE:  
 3. DIELECTRONIC STRENGTH:500V DC  
 4. INSULATION RESISTANCE:100M OHMS Min.  
 5. CONDUCTIVE RESISTOR: 2 OHMS Max.

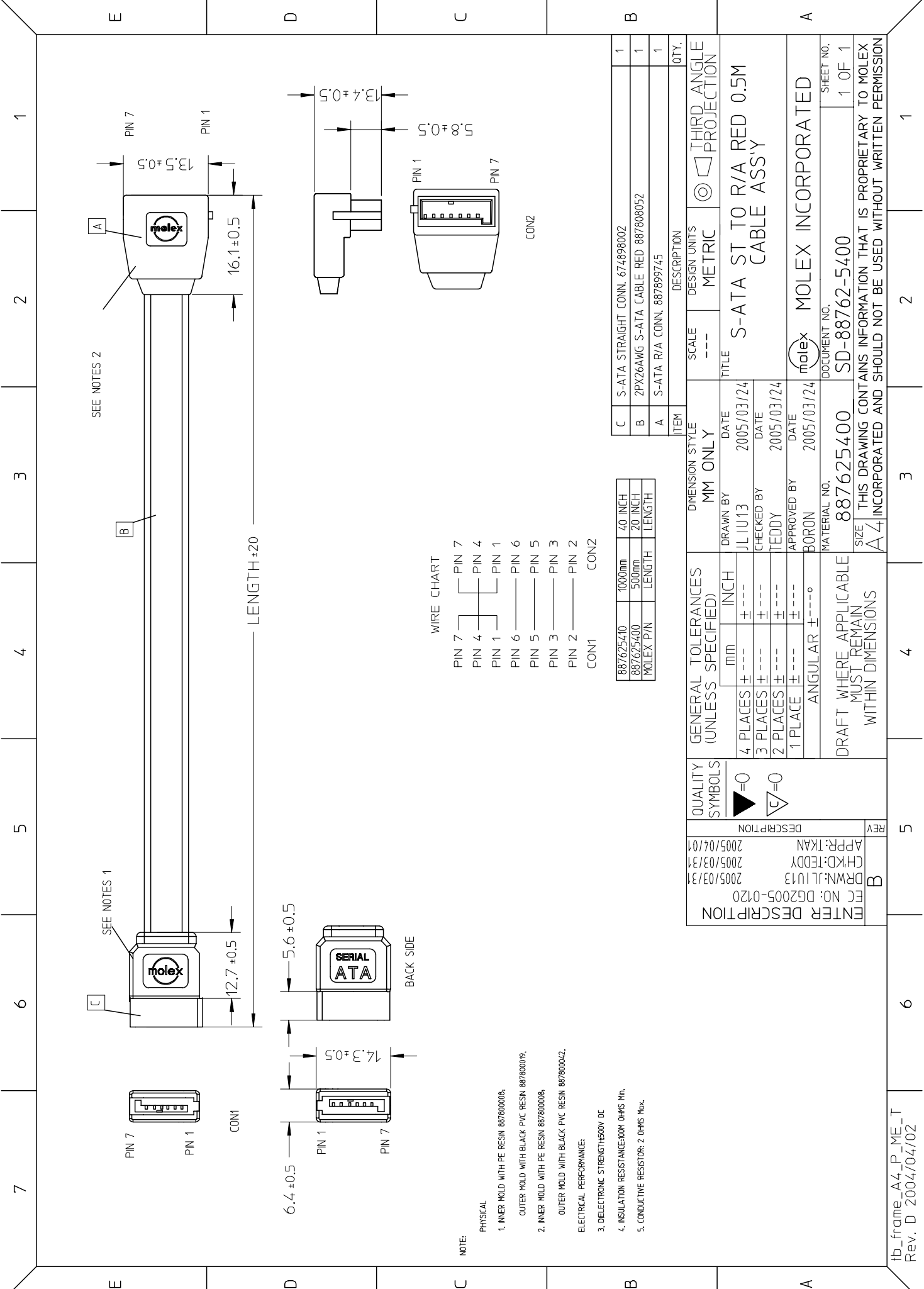


887625410	1000mm	40 INCH
887625400	500mm	20 INCH
MOLEX P/N	LENGTH	LENGTH

C	S-ATA STRAIGHT CONN. 675380001		I
B	2PX26AWG S-ATA CABLE RED 887808052	N/A	I
A	S-ATA R/A CONN. 887899745		I
ITEM	DESCRIPTION	L	QTY.

EC NO. DRWN: Louis 04/02/17 CHK: APPR:	DESCRIPTION	QUALITY SYMBOLS	GENERAL TOLERANCES: (UNLESS SPECIFIED)	SCALE N.T.S	DESIGN UNITS <input checked="" type="checkbox"/> mm <input type="checkbox"/> INCH	<input checked="" type="checkbox"/> THIRD ANGLE <input type="checkbox"/> PROJECTION	DIMENSIONS: <input checked="" type="checkbox"/> mm <input type="checkbox"/> INCH <input type="checkbox"/> mm ONLY	SHT	REV
		MAJOR ▼ = 0	4 PLACES ±0.1	mm	INCH	DRAWN BY & DATE Louis Chen 03/11/24	TITLE: S-ATA STRAIGHT TO RIGHT ANGEL SIGNAL RED CABLE, 0.5M, 1M	REVISE ON CAD ONLY	
		CRITICAL ▽ = 0	3 PLACES ±0.1		CHECKED BY & DATE Luky Xu 03/11/24	MOLEX INCORPORATED			
			2 PLACES ±0.1		APPROVED BY & DATE Stepher Guo 03/11/24		MATERIAL NO. 8876254XX	DRAWING NO. SD-88755-009	SHEET NO. 1 OF 1
A	REV		1 PLACE ±0.1	ANGULAR: ± 0	CAD FILENAME J6254-XX .DGN	THIS DRAWING CONTAINS INFORMATION THAT IS PROPRIETARY TO MOLEX INCORPORATED AND SHOULD NOT BE USED WITHOUT WRITTEN PERMISSION.		SIZE A4	

WBORD\_A.BOR REV A  
 97/05/14 LEVEL 3



88762540	1000mm	40 INCH
887625400	500mm	20 INCH
MOLEX P/N	LENGTH	LENGTH

ITEM	DESCRIPTION	SCALE	DESIGN UNITS	THIRD ANGLE PROJECTION
C	S-ATA STRAIGHT CONN. 674898002	---	METRIC	☉
B	2PX26AWG S-ATA CABLE RED 887808052			
A	S-ATA R/A CONN. 887899745			

GENERAL TOLERANCES (UNLESS SPECIFIED)	DIMENSION STYLE	TITLE
4 PLACES ± 0.15	MM ONLY	S-ATA ST TO R/A RED 0.5M CABLE ASSY
3 PLACES ± 0.25		
2 PLACES ± 0.40		
1 PLACE ± 0.75		
ANGULAR ± 0.5°		

QUALITY SYMBOLS	REVISION
▶=0	REVISION DESCRIPTION
∇=0	

ENTER DESCRIPTION	DATE
FC NO: DG2005-0120	2005/03/31
DRWN: JLIU13	2005/03/31
CHKD: TEDDY	2005/03/31
APPR: TKAN	2005/04/01

DRAFT WHERE APPLICABLE MUST REMAIN WITHIN DIMENSIONS	MATERIAL NO.	DOCUMENT NO.	SHEET NO.
	887625400	SD-88762-5400	1 OF 1
THIS DRAWING CONTAINS INFORMATION THAT IS PROPRIETARY TO MOLEX INCORPORATED AND SHOULD NOT BE USED WITHOUT WRITTEN PERMISSION			

NOTE:

PHYSICAL

- INNER MOLD WITH PE RESIN 887800008,
- OUTER MOLD WITH BLACK PVC RESIN 887800019,
- INNER MOLD WITH PE RESIN 887800008,
- OUTER MOLD WITH BLACK PVC RESIN 887800042.

ELECTRICAL PERFORMANCE:

- DELECTRONIC STRENGTH<math>E\_{500V}</math> DC
- INSULATION RESISTANCE<math>100M</math> OHMS Min.
- CONDUCTIVE RESISTOR: 2 OHMS Max.