

NOTES :

1- MATERIAL:

-HOUSING: LCP FIBER GLASS FILLED UL 94-V0
COLOR BLACK.

-TERMINAL: PHOSPHOR BRONZE.

PLATING:

POST PLATE 0.00127-0.00152/.000050-.000060 GOLD IN CONTACT AREA , 0.00190/.000075 MIN PURE TIN IN TAIL AREA BOTH OVER 0.00127/.000050 MIN NICKEL OVERALL.

-SHIELD: BRASS PLATED WITH 0.0020/.00078 TIN

2- JACK FOR MATING WITH F.C.C. 68 SHIELDED PLUGS (95043 MOLEX SERIES).

3- PRODUCT SPECIFICATION PS-95540-002 AND PS-85505-001 (SECTION 5.2).

4- PACKAGING SPECIFICATION PK-95022 (TRAY PACKAGING).

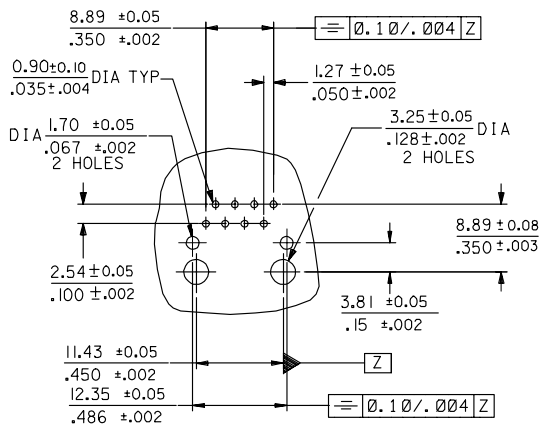
5- EXCEEDS CATEGORY 5E PERFORMANCE.

6- PC BOARD THICKNESS: 1.57/.062

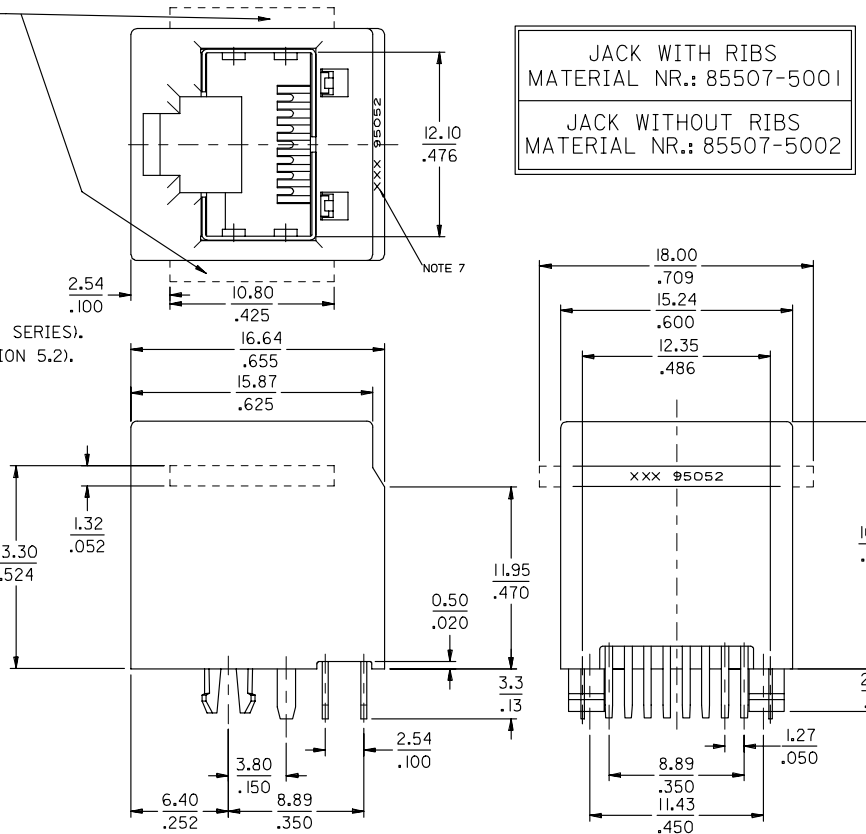
7- MANUFACTURING I.D. CAN BE MG, MXF OR MXI.

8- APPLICATION SPECIFICATION: AS-85513-001

P.C.B. MOUNTING PATTERN
(see from component side)
SCALE 2:1



OPTIONAL RIBS



ADDED NOTE: EC NO: E2007-0766 DRAWN BY: DRW:JBYRNES CHKD: CHIKO APPR: EDMAHONY 2007/04/02 2007/04/02 2007/04/04	QUALITY SYMBOLS ▽=0 ▽=0	GENERAL TOLERANCES (UNLESS SPECIFIED) 4 PLACES ± .15 ± .010 3 PLACES ± .15 ± .010 2 PLACES ± .15 ± .010 1 PLACE ± .25 ± .010 ANGULAR ± 2 °	DIMENSION STYLE MM/IN DRAWN BY: FB DATE: 98/08/05 CHECKED BY: FM DATE: 98/08/05 APPROVED BY: FB DATE: 98/08/05	SCALE: 4:1 DESIGN UNITS: METRIC THIRD ANGLE PROJECTION	TITLE: TOP ENTRY HIGH SPEED SHIELDED MODULAR JACK THROUGH HOLE 8 CIRCUIT MOLEX INCORPORATED
	DRAFT WHERE APPLICABLE MUST REMAIN WITHIN DIMENSIONS	MATERIAL NO.: SEE CHART SIZE: A3	DOCUMENT NO.: SD-85507-501 SHEET NO.: 1 OF 1	THIS DRAWING CONTAINS INFORMATION THAT IS PROPRIETARY TO MOLEX INCORPORATED AND SHOULD NOT BE USED WITHOUT WRITTEN PERMISSION	