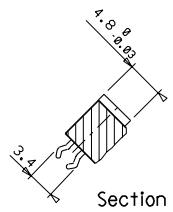
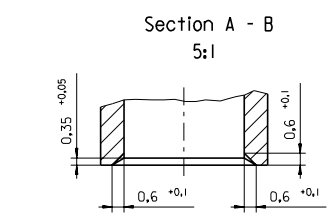
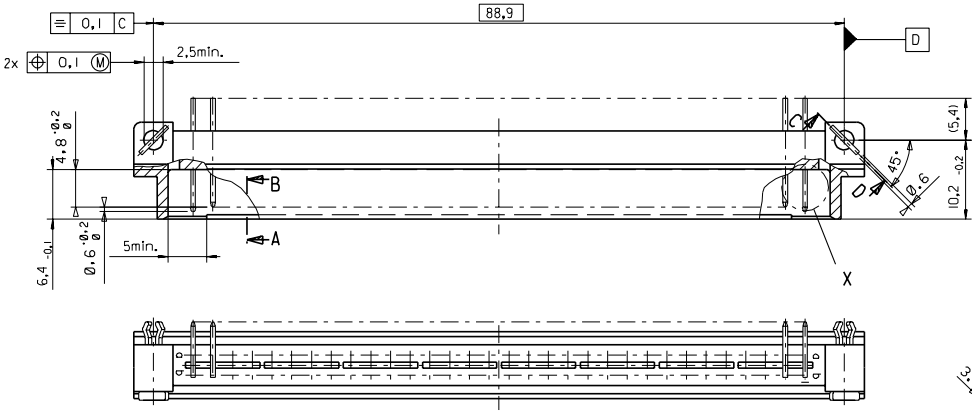
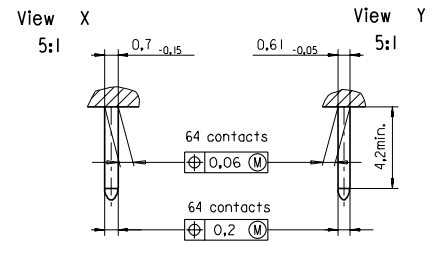
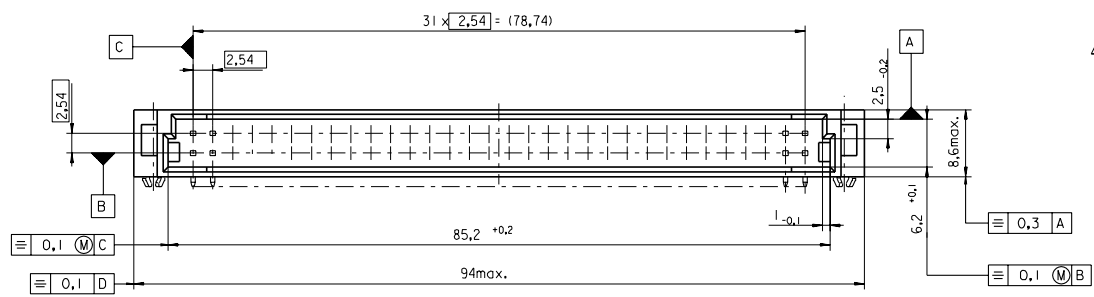


PART NO.
DMC NO.



7132-1283									
FIRST ANGLE PROJECTION									
REVISE ONLY ON CAD SYSTEM									
SH. REV.									
first release see ECN No. 1687 UNLESS OTHERWISE SPECIFIED TOLERANCES: ANGULAR ± 2° INCH METRIC 3 PLACE ± * ± 2 PLACE ± * ± 1 PLACE ± * ± DRAFT WHERE APPLICABLE MUST REMAIN WITHIN DIMENSIONS DESIGN DIMENSION <input checked="" type="checkbox"/> MM <input type="checkbox"/> IN. EQUIVALENT DIMENSION <input type="checkbox"/> MM <input type="checkbox"/> IN. IF TWO DIMENSIONS ARE SHOWN, THE UPPER IS THE DESIGN DIMENSION, LOWER IS SECONDARY.									
DRWG BY Ca CHK'D BY KN APP'D BY SCALE 2:1									
CAD/CAM PROJECT NAME 85001000 811 THIS DRAWING CONTAINS INFORMATION THAT IS PROPRIETARY TO MOLEX INC. & SHOULD NOT BE USED WITHOUT WRITTEN PERMISSION TITLE 64 pos. Male connector acc. DIN 41612 style B Dimensions MOLEX MOLEX EUROPE SHEET NO. 1 OF 1 DATE 95/06/06 PART NO. SDA-85001-0001 DWG NO. SIZE B									
7132-1283									

VIEW ON TERMINATION SIDE

∞	Y	B	B	B	B	B	B	B	B	B	B	B	B	B	B	B	B	B	B	B	B	B	B	Y
<	Z	A	A	A	A	A	A	A	A	A	A	A	A	A	A	A	A	A	A	A	A	A	A	Z

∞ 0 1 2 3 4 5 6 7 8 9 A B C D E F G H I J K L M N O P Q R S T U V W X Y Z

- A = 28 STANDARD CONTACTS L=3
- B = 28 STANDARD CONTACTS L=3
- Z = 4 FMLB CONTACTS •Ø.6 L=3
- Y = 4 FMLB CONTACTS •Ø.6 L=3
- S = 64 TOTAL NUMBER OF CONTACTS

Marking	Standard
Performance level	G2/0 = Contact area level2 / Termination fin
Flux proof	no
Fixing clip	no
Dimensions	SDA-85001-0001 sht.1
Technical Data	PS-85003-0001

Y	G2/0	b1,2,3,132.
Z	G2/0	a1,2,3,132
B	G2/0	b3-30
A	G2/0	a3-30

Contact symbol Perform. level
Contact position number

96/07/18 Cd see ECN No. 2204	REVISIONS		FOR PREVIOUS REVISIONS SEE MRI LIST
	LTR		
	UNLESS OTHERWISE SPECIFIED TOLERANCES: ANGULAR ± 2°	DRWG BY Ca	SIGN
	3 PLACE ± . INCH	CHK'D BY	SIGN
	2 PLACE ± .	APPRO'D BY	SCALE
	1 PLACE ± . METRIC		
	DRAFT WHERE APPLICABLE MUST REMAIN WITHIN DIMENSIONS		
	DESIGN DIMENSION <input type="checkbox"/> MM <input type="checkbox"/> IN.		
	EQUIVALENT DIMENSION <input type="checkbox"/> MM <input type="checkbox"/> IN.		
	IF TWO DIMENSIONS ARE SHOWN THE UPPER IS THE DESIGN DIMENSION, LOWER IS SECONDARY		
	REVISE ONLY ON CAD SYSTEM		SH. REV.
	CAD/CAM PROJECT NAME: 85500103	THIS DRAWING CONTAINS INFORMATION THAT IS PROPRIETARY TO MOLEX INC. & SHOULD NOT BE USED WITHOUT WRITTEN PERMISSION	
	TITLE: 64 pos. Male connector acc. DIN 41612 style B contacts arrangement		SHEET NO. DATE
	MOLEX MOLEX EUROPE		1 OF 1 95/05/24
	PART NO. 85001-0385	DWG NO. SDA-85001-0385	SIZE A