

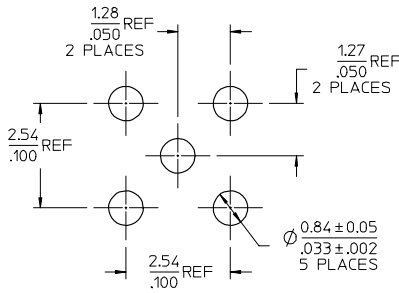
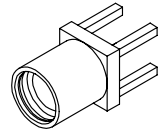
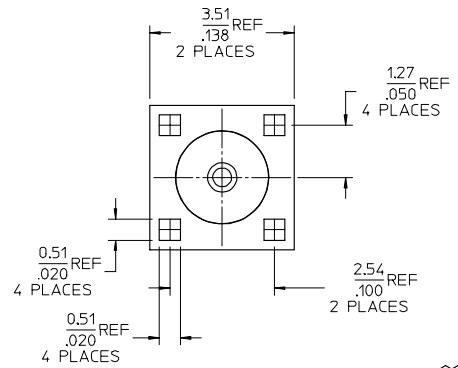
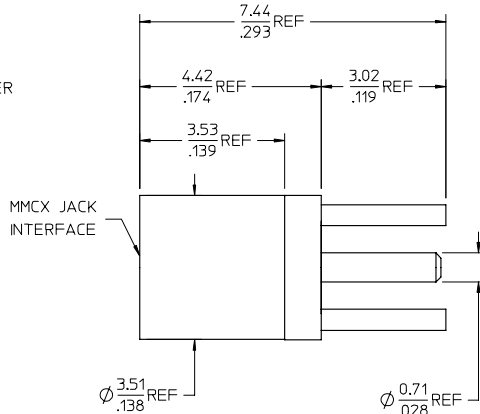
MATERIALS AND FINISHES

BODY SEE TABLE
PLATED SEE TABLE

CENTER CONTACT BERYLLIUM COPPER
PLATED GOLD

INSULATOR TEFLON

NOTE
PART # 73415-1473 IS
(NON-MAGNETIC)



RECOMMENDED PCB LAYOUT

73415-1474	TRAY	BRASS/GOLD(PER COMMERCIAL REQUIREMENT)
73415-1473	BULK	BeCu/GOLD (NON MAGNETIC)
73415-1472	P/N 73415-1471. ONE PER BAG	BRASS/GOLD(PER COMMERCIAL REQUIREMENT)
73415-1471	BULK	BRASS/GOLD(PER COMMERCIAL REQUIREMENT)
73415-1470	BULK	BRASS/GOLD(PER MILITARY REQUIREMENT)
	PART NO.	PACKAGING
		MATERIAL/PLATING

ES-73599-0000-016	INTERFACE
PS-89675-1910	ELECTRO/MECH PER.
SPECIFICATION	DESCRIPTION

CHG: ADDED P/N 73415-1474 EC NO. URF 2008-0076 2007/08/09 DRW: WJH/CH/MS 2007/08/10 CHK: JH/MS 2007/08/10 APPR: JH/MS 2007/08/10	QUALITY SYMBOLS ▽=0 ▽=0	GENERAL TOLERANCES (UNLESS SPECIFIED)		DIMENSION STYLE MM/IN		SCALE	DESIGN UNITS METRIC	THIRD ANGLE PROJECTION
		4 PLACES ± --- ± --- 3 PLACES ± --- ± --- 2 PLACES ± --- ± --- 1 PLACE ± --- ± --- ANGULAR ± 2 °	DRAWN BY DATE TEF 2000/01/14 CHECKED BY DATE TEF 2000/01/14 APPROVED BY DATE GMH 2000/01/14	TITLE	MMCX JACK, PCB MOUNT 50 OHMS, EWR-1968 MMCX-J/PCB	MATERIAL NO. SEE TABLE	DOCUMENT NO. SD-73415-147	SHEET NO. 1 OF 1
DRAFT WHERE APPLICABLE MUST REMAIN WITHIN DIMENSIONS		THIS DRAWING CONTAINS INFORMATION THAT IS PROPRIETARY TO MOLEX INCORPORATED AND SHOULD NOT BE USED WITHOUT WRITTEN PERMISSION						