

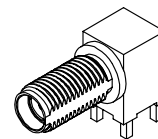
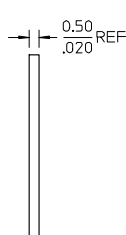
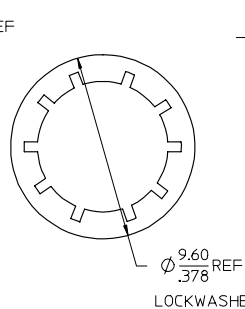
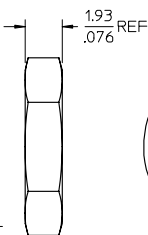
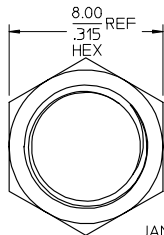
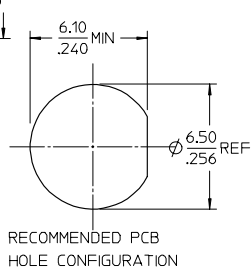
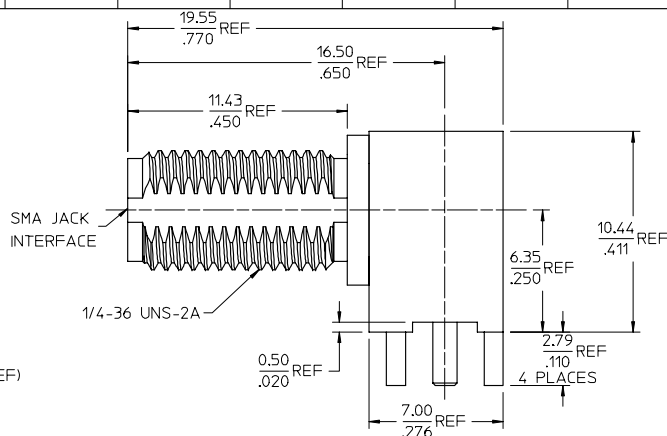
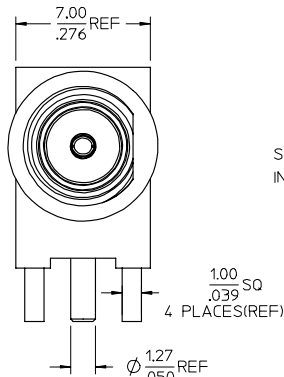
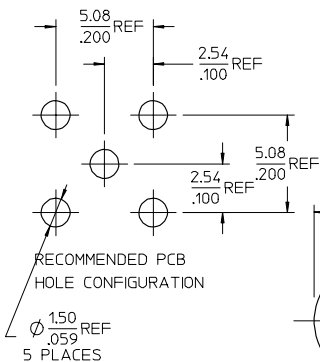
MATERIALS AND FINISHES

BODY, JAM NUT BRASS
PLATED SEE TABLE

CENTER CONTACT BERYLLIUM COPPER
PLATED GOLD

INSULATOR TEFLON

LOCKWASHER PHOSPHOR BRONZE
PLATING SEE TABLE



73251-2202	73251-2201 BY TRAY (20 CAV.)
73251-2201	GOLD
73251-2200	NICKEL
PART NO. PALTING (BODY, NUT, LOCKWASHER)	

PS-73598-0460	ELECTRO/MECH PERFORM.
SPECIFICATION	DESCRIPTION

CHANGE PRODUCT SPEC. EC NO. URF2008-0146 2007/10/08 DORWHELIN 2007/10/09 CHFKC 2007/10/11 APPR:PHUANG 2007/10/11	QUALITY SYMBOLS ▽=0 ▽=0	GENERAL TOLERANCES (UNLESS SPECIFIED)	DIMENSION STYLE MM/IN	SCALE	DESIGN UNITS METRIC	THIRD ANGLE PROJECTION
	4 PLACES ± --- ± ---	mm INCH	DRAWN BY CLAIRE LEE	DATE 2003/08/29	TITLE SMA JACK, R/A PCB SMA-J/RA/PCB	
	3 PLACES ± --- ± ---		CHECKED BY	DATE		
	2 PLACES ± --- ± ---		APPROVED BY	DATE		
1 PLACE ± --- ± ---		ANGULAR ± 2 °				
	DRAFT WHERE APPLICABLE MUST REMAIN WITHIN DIMENSIONS		MATERIAL NO. SEE TABLE	DOCUMENT NO. SD-73251-220	SHEET NO. 1 OF 1	
			SIZE C	THIS DRAWING CONTAINS INFORMATION THAT IS PROPRIETARY TO MOLEX INCORPORATED AND SHOULD NOT BE USED WITHOUT WRITTEN PERMISSION		