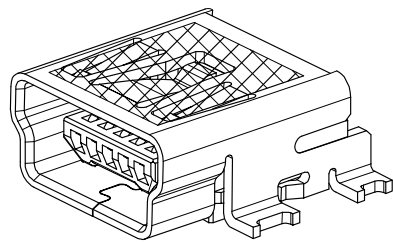
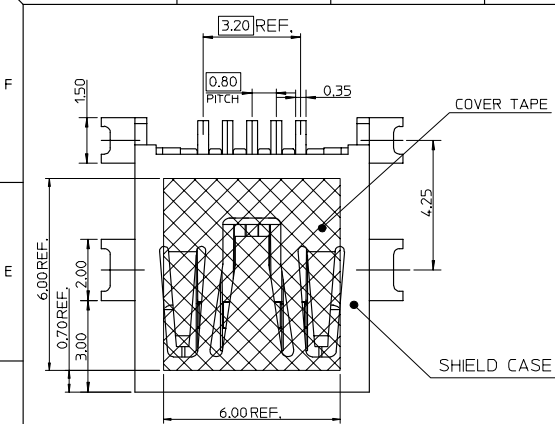
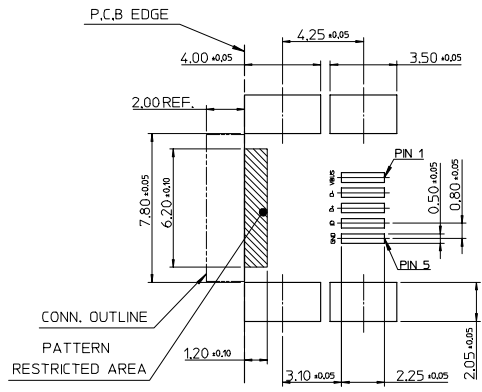
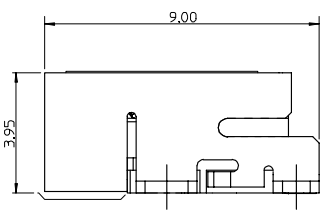
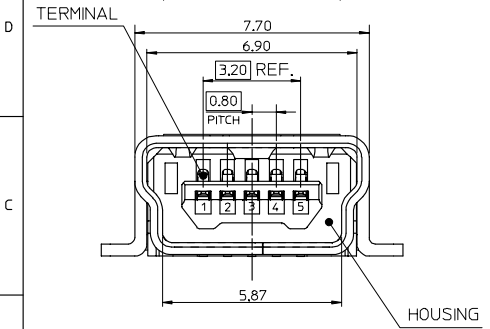


10 9 8 7 6 5 4 3 2 1



NOTE :

- MATERIAL :
HOUSING : NYLON GLASS FILLED , BLACK,UL94V-0
TERMINAL : COPPER ALLOY THICKNESS = 0.2 MM
SHIELD CASE : COPPER ALLOY THICKNESS = 0.4 MM
- PLATING :
TERMINAL:
CONTACT AREA : GOLD 0.75 MICROMETER MINIMUM.
SOLDER TAIL AREA : PURE TIN 3.8 MICROMETER MINIMUM.
UNDER PLATING : NICKEL 1.25 MICROMETER MINIMUM.
SHIELD CASE :
PURE TIN: 1-3 MICROMETER .
UNDER PLATING : NICKEL 1.0 MICROMETER MINIMUM.
- TAIL & NAIL COPLANARITY 0.1 mm MAXIMUM.
- PRODUCT SPECIFICATION REFER TO PS-67803-001.
- PACKAGING INFORMATION REFER TO PK-67503-001.



RECOMMENDED P.C.B. PATTERN LAYOUT

NEW RELEASE EC NO. SH2005-0155 DRW: LXWANG 2005/01/04 CHK: HARVEY 2005/01/05 APPR: YTYAP 2005/01/05	QUALITY SYMBOLS ▽=0 ▽=0	GENERAL TOLERANCES (UNLESS SPECIFIED)		DIMENSION STYLE MM ONLY		SCALE 8:1	DESIGN UNITS METRIC	THIRD ANGLE PROJECTION	
		mm	INCH	DRAWN BY LXWANG	DATE 2004/11/12	TITLE USB SERIES MINI-B REC. REC. ASS'Y FOR SMT W/O BACKOVER&PEG(LEAD-FREE) MOLEX INCORPORATED			
		4 PLACES ± ---	± ---	CHECKED BY HARVEY	DATE 2004/11/12				
		3 PLACES ± ---	± ---	APPROVED BY YTYAP	DATE 2004/11/12				
2 PLACES ± 0.25	± ---	MATERIAL NO. 67503-1230	DOCUMENT NO. SD-67503-011						
1 PLACE ± 0.25	± ---	ANGULAR ± 3 °		DRAFT WHERE APPLICABLE MUST REMAIN WITHIN DIMENSIONS		SHEET NO. 1 OF 1			
REV		SIZE A3		THIS DRAWING CONTAINS INFORMATION THAT IS PROPRIETARY TO MOLEX INCORPORATED AND SHOULD NOT BE USED WITHOUT WRITTEN PERMISSION					

fb_frame_A3_P_AM_T Rev. D 2004/06/28 9 8 7 6 5 4 3 2 1