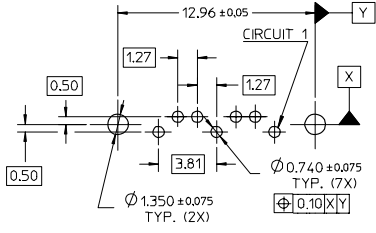
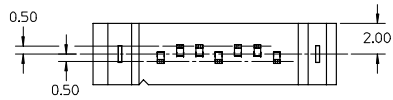
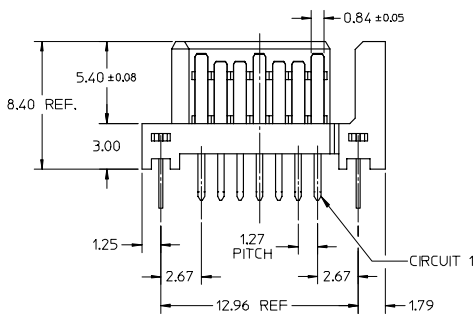
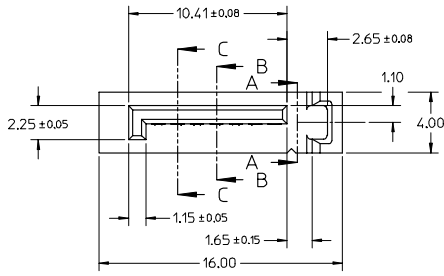
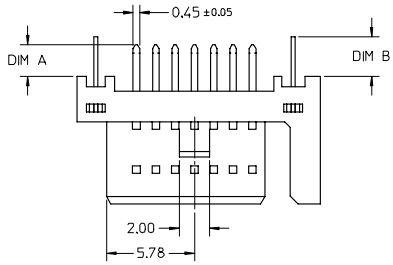
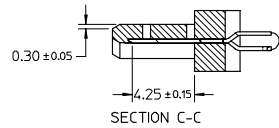
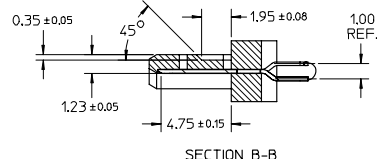
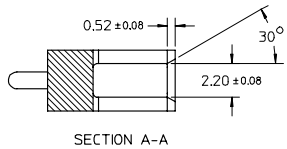


10 9 8 7 6 5 4 3 2 1

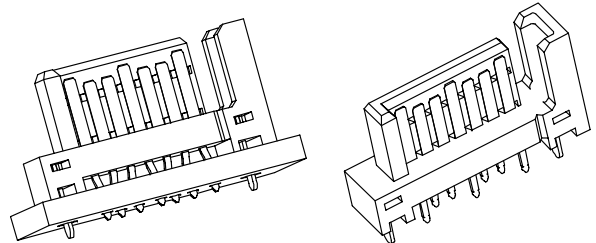


RECOMMENDED P.C.B. LAYOUT (T=1.6mm/2.0mm/2.4mm)



NOTES:

- MATERIAL:  
HOUSING: THERMAL PLASTIC, UL94V-0, COLOR: SEE SHEET 2  
TERMINAL/PEG: COPPER ALLOY, THICKNESS=0.25MM
- TERMINAL PLATING:  
CONTACT AREA: (a) GOLD FLASH  
(b) 0.76 MICRON GOLD PLATED  
(c) 0.38 MICRON GOLD PLATED  
SOLDER TAIL:  
1.27 MICRON MIN. MATTE TIN PLATED  
UNDER PLATE:  
1.27 MICRON MIN. NICKEL PLATED
- PEG PLATING:  
1.27 MICRON MIN. MATTE TIN PLATED OVERALL  
1.27 MICRON MIN. NICKEL UNDER PLATED
- PACKAGING SPECIFICATION REFER TO PK-67491-001
- PRODUCT SPECIFICATION REFER TO PS-67491-001
- MATING PART: 67489
- RECOMMENDED PROCESS: WAVE SOLDERING



ADD PART NUMBER EC NO. SH2007-0895 DRAWN: CHEN26 CHECKED: JIAN APPR: JICHEN DATE: 2007/06/15 DATE: 2007/06/18 DATE: 2007/06/22	QUALITY SYMBOLS ▽=0 ▽=0	GENERAL TOLERANCES (UNLESS SPECIFIED)		DIMENSION STYLE MM ONLY	SCALE 4:1	DESIGN UNITS METRIC	THIRD ANGLE PROJECTION		
		4 PLACES ± --- ± ---	3 PLACES ± --- ± ---	2 PLACES ± 0.15 ± ---	1 PLACE ± 0.25 ± ---	DRAWN BY GRATE MA DATE 2004/02/02	CHECKED BY YA JUN DATE 2004/02/02	APPROVED BY SAM DATE 2004/02/02	TITLE 1.27MM HIGH SPEED PLUG VERTICAL TYPE
		ANGULAR ± 3 °		DRAFT WHERE APPLICABLE MUST REMAIN WITHIN DIMENSIONS		MATERIAL NO. SEE SHEET 2	DOCUMENT NO. SD-67491-001	SHEET NO. 1 OF 2	
		THIS DRAWING CONTAINS INFORMATION THAT IS PROPRIETARY TO MOLEX INCORPORATED AND SHOULD NOT BE USED WITHOUT WRITTEN PERMISSION							

9 8 7 6 5 4 3 2 1

	10	9	8	7	6	5	4	3	2	1		
	P/N	PLATING TYPE	DIM 'A'	DIM 'B'	COLOR	SOLDE AREA PLATING						
F	67491-0020	SEE NOTE 2(a)	2.05	2.57	BLACK	PURE TIN MATTE FINISH	▽ <sub>G</sub>					
	67491-0021	SEE NOTE 2(b)										
	67491-0022	SEE NOTE 2(c)										
	67491-0025	SEE NOTE 2(a)	2.35									
	67491-0026	SEE NOTE 2(b)										
67491-0027	SEE NOTE 2(c)											
E	67491-2020	SEE NOTE 2(a)	2.05	3.20	BLUE PANTONE NO. 293C ΔE<3							
	67491-2021	SEE NOTE 2(b)										
	67491-2022	SEE NOTE 2(c)										
	67491-2025	SEE NOTE 2(a)	2.35									
	67491-2026	SEE NOTE 2(b)										
67491-2027	SEE NOTE 2(c)											
D	67491-3010	SEE NOTE 2(a)	3.00	3.20	BLACK							
	67491-3011	SEE NOTE 2(b)										
	67491-3012	SEE NOTE 2(c)										
	67491-3110	SEE NOTE 2(a)	3.00									
	67491-3111	SEE NOTE 2(b)										
67491-3112	SEE NOTE 2(c)											

ADD PART NUMBER EC NO. SH2007-0895 DRAWN BY: DRW:WARCHEN26 CHECKED BY: CHIKO:JITIAN APPR: JINCHEN DATE: 2007/06/15 DATE: 2007/06/18 DATE: 2007/06/22	QUALITY SYMBOLS	GENERAL TOLERANCES (UNLESS SPECIFIED)	DIMENSION STYLE	SCALE	DESIGN UNITS	THIRD ANGLE PROJECTION
	▽=0	mm INCH	MM ONLY	4:1	METRIC	
	▽=0	4 PLACES ± --- ± ---	DRAWN BY DATE	TITLE		
		3 PLACES ± --- ± ---	GRATE MA 2004/02/02	1.27MM HIGH SPEED PLUG VERTICAL TYPE		
	2 PLACES ± 0.15 ± ---	CHECKED BY DATE	MOLEX INCORPORATED			
	1 PLACE ± 0.25 ± ---	YA JUN 2004/02/02	SD-67491-001			
	ANGULAR ± 3 °	APPROVED BY DATE	SHEET NO. 2 OF 2			
		SAM 2004/02/02	INCORPORATED AND SHOULD NOT BE USED WITHOUT WRITTEN PERMISSION			
		MATERIAL NO.				
		DOCUMENT NO.				
		SEE TABLE				
		SIZE A3				
		THIS DRAWING CONTAINS INFORMATION THAT IS PROPRIETARY TO MOLEX INCORPORATED AND SHOULD NOT BE USED WITHOUT WRITTEN PERMISSION				

fb\_frame\_A3\_P\_AM.T  
Rev. D 2004/06/28