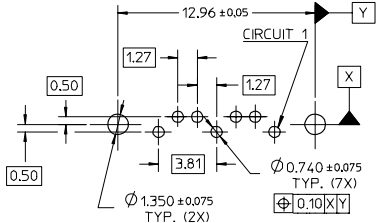
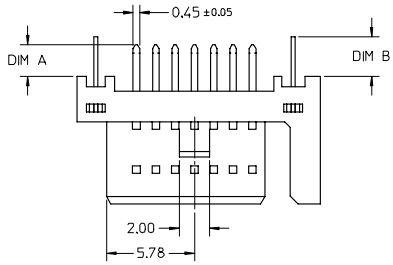
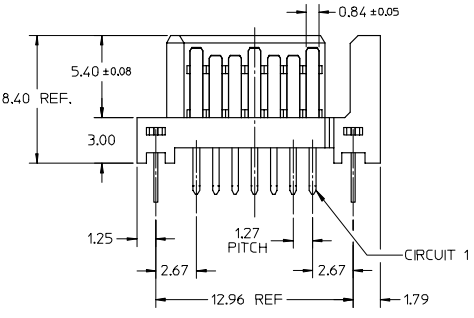
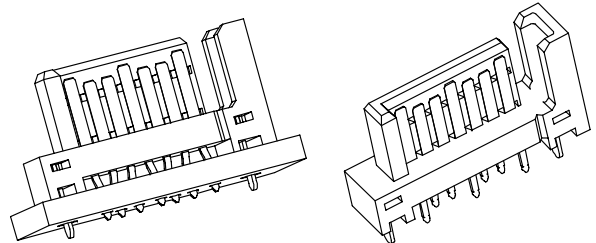
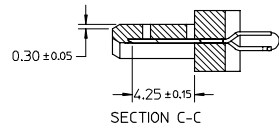
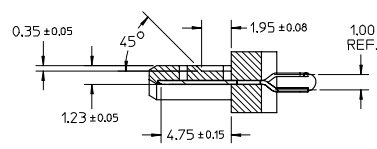
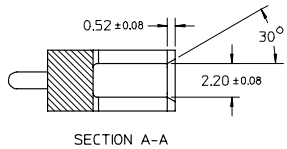
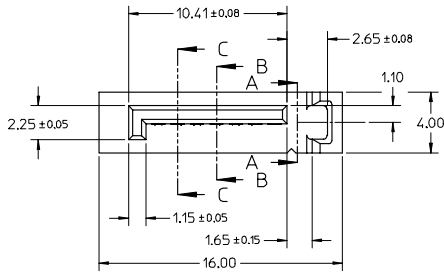


10 9 8 7 6 5 4 3 2 1



RECOMMENDED P.C.B. LAYOUT (T=1.6mm/2.0mm/2.4mm)

- NOTES:
- MATERIAL:
HOUSING: THERMAL PLASTIC, UL94V-0, COLOR: SEE SHEET2
TERMINAL/PEG: COPPER ALLOY, THICKNESS=0.25MM
 - TERMINAL PLATING:
CONTACT AREA: (a) GOLD FLASH
(b) 0.76 MICRON GOLD PLATED
(c) 0.38 MICRON GOLD PLATED
 - SOLDER TAIL:
1.27 MICRON MIN. MATTE TIN PLATED
UNDER PLATE:
1.27 MICRON MIN. NICKEL PLATED
 - PEG PLATING:
1.27 MICRON MIN. MATTE TIN PLATED OVERALL
1.27 MICRON MIN. NICKEL UNDER PLATED
 - PACKAGING SPECIFICATION REFER TO PK-67491-001
 - PRODUCT SPECIFICATION REFER TO PS-67491-001
 - MATING PART: 67489
 - RECOMMENDED PROCESS: WAVE SOLDERING



OBSOLETE PART EC NO. SH2006-0566 TIDRW:HCN26 CHIKOGRATE MA APPR: JINCHEN 2006/05/29 2006/05/30	QUALITY SYMBOLS	GENERAL TOLERANCES (UNLESS SPECIFIED)	DIMENSION STYLE	SCALE	DESIGN UNITS	THIRD ANGLE PROJECTION
	▽=0 ▽=0	mm INCH 4 PLACES ± --- ± --- 3 PLACES ± --- ± --- 2 PLACES ± 0.15 ± --- 1 PLACE ± 0.25 ± --- ANGULAR ± 3 °	MM ONLY	4:1	METRIC	DRAWN BY DATE GRATE MA 2004/02/02 CHECKED BY DATE YA JUN 2004/02/02 APPROVED BY DATE SAM 2004/02/02
	TITLE 1.27MM HIGH SPEED PLUG VERTICAL TYPE	MATERIAL NO. SEE SHEET 2	DOCUMENT NO. SD-67491-001	MOLEX INCORPORATED	SHEET NO. 1 OF 2	
	DRAFT WHERE APPLICABLE MUST REMAIN WITHIN DIMENSIONS	SIZE A3	THIS DRAWING CONTAINS INFORMATION THAT IS PROPRIETARY TO MOLEX INCORPORATED AND SHOULD NOT BE USED WITHOUT WRITTEN PERMISSION			

9 8 7 6 5 4 3 2 1

P/N	PLATING TYPE	DIM 'A'	DIM 'B'	COLOR	SOLDE AREA PLATING	
67491-0020	SEE NOTE 2(a)	2.05	2.57	BLACK	PURE TIN MATTE FINISH	
67491-0021	SEE NOTE 2(b)					
67491-0022	SEE NOTE 2(c)					
67491-0025	SEE NOTE 2(a)					
67491-0026	SEE NOTE 2(b)					
67491-0027	SEE NOTE 2(c)					
67491-2020	SEE NOTE 2(a)	2.05	2.57	BLUE PANTONE NO. 293C $\Delta E < 3$	PURE TIN MATTE FINISH	
67491-2021	SEE NOTE 2(b)					
67491-2022	SEE NOTE 2(c)					
67491-2025	SEE NOTE 2(a)	2.35	2.57	BLUE PANTONE NO. 293C $\Delta E < 3$		PURE TIN MATTE FINISH
67491-2026	SEE NOTE 2(b)					
67491-2027	SEE NOTE 2(c)					
67491-3010	SEE NOTE 2(a)	3.00	3.20	BLACK	PURE TIN MATTE FINISH	
67491-3011	SEE NOTE 2(b)					
67491-3012	SEE NOTE 2(c)					



OBSOLETE PART EC NO. SH2006-0566 T1 DRW: HCHEN26 2006/05/29 CHIKO: GRATE MA 2006/05/29 APPR: JINCHEN 2006/05/30	QUALITY SYMBOLS	GENERAL TOLERANCES (UNLESS SPECIFIED)	DIMENSION STYLE	SCALE	DESIGN UNITS	THIRD ANGLE PROJECTION																		
	$\nabla = 0$ $\nabla = 0$	<table border="1"> <thead> <tr> <th></th> <th>mm</th> <th>INCH</th> </tr> </thead> <tbody> <tr> <td>4 PLACES</td> <td>± 0.15</td> <td>± 0.005</td> </tr> <tr> <td>3 PLACES</td> <td>± 0.20</td> <td>± 0.008</td> </tr> <tr> <td>2 PLACES</td> <td>± 0.25</td> <td>± 0.010</td> </tr> <tr> <td>1 PLACE</td> <td>± 0.30</td> <td>± 0.012</td> </tr> <tr> <td colspan="3">ANGULAR ± 3°</td> </tr> </tbody> </table>		mm	INCH	4 PLACES	± 0.15	± 0.005	3 PLACES	± 0.20	± 0.008	2 PLACES	± 0.25	± 0.010	1 PLACE	± 0.30	± 0.012	ANGULAR ± 3°			MM ONLY	4:1	METRIC	
		mm	INCH																					
	4 PLACES	± 0.15	± 0.005																					
3 PLACES	± 0.20	± 0.008																						
2 PLACES	± 0.25	± 0.010																						
1 PLACE	± 0.30	± 0.012																						
ANGULAR ± 3°																								
DESCRIPTION			DRAWN BY DATE	TITLE																				
			GRATE MA 2004/02/02	1.27MM HIGH SPEED PLUG VERTICAL TYPE																				
			CHECKED BY DATE																					
			YA JUN 2004/02/02																					
			APPROVED BY DATE																					
			SAM 2004/02/02																					
			MATERIAL NO.	MOLEX	MOLEX INCORPORATED																			
			SEE TABLE	DOCUMENT NO.	SD-67491-001	SHEET NO. 2 OF 2																		
			SIZE A3	THIS DRAWING CONTAINS INFORMATION THAT IS PROPRIETARY TO MOLEX INCORPORATED AND SHOULD NOT BE USED WITHOUT WRITTEN PERMISSION																				