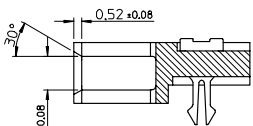
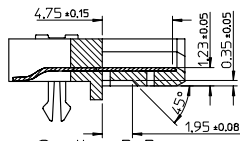


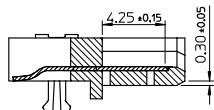
P/N	CONTACT AREA PLATING	REMARK
67490-0220	GOLD FLASH	
67490-0221	0.76 MICRONS GOLD PLATED	TIN-LEAD
67490-0225	0.38 MICRONS GOLD PLATED	
67490-3220	GOLD FLASH	
67490-3221	0.76 MICRONS GOLD PLATED	PURE TIN
67490-3225	0.38 MICRONS GOLD PLATED	



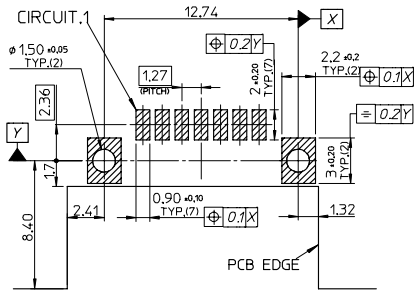
Section A-A



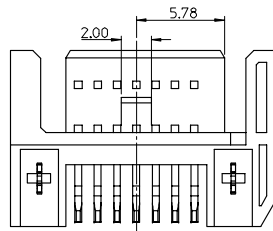
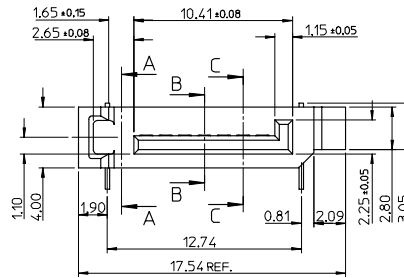
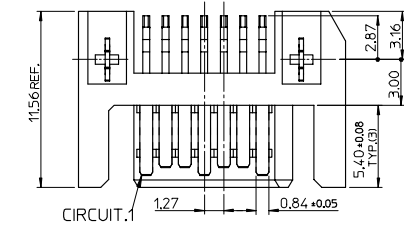
Section B-B



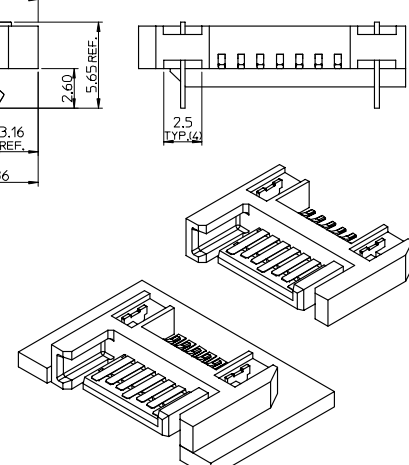
Section C-C



RECOMMEND PCB LAYOUT (t=1.6)



- NOTES:
- MATERIAL:  
HOUSING: HIGH TEMPERATURE THERMAL PLASTIC, GLASS FILLED, UL94V-0, COLOR : BLACK  
TERMINAL/FORKLOCK: COPPER ALLOY  
MYLAR: ADHESIVE MYLAR 4.5MMX15.5MM
  - TERMINAL PLATING:  
CONTACT AREA: GOLD PLATED  
SOLDERING TAIL: 1.27 MICRONS MINIMUM TIN-LEAD OR TIN PLATED UNDER PLATE NICKEL 1.27 MICRONS MINIMUM NICKEL PLATED
  - FORKLOCK PLATING :  
1.27 MICRONS MINIMUM TIN-LEAD OR TIN PLATED OVERALL 1.27 MICRONS MINIMUM NICKEL UNDER-PLATED
  - PACKAGING SPECIFICATION REFER TO PK-67490-001
  - PRODUCT SPECIFICATION REFER TO PS-67490-001
  - MATING PART: 67538, 67489



IEC NO. SH2005-0091 DRAWN: GRMA 2004/10/13 CHKD: YTYAP 2004/10/14 APPR: YTYAP 2004/10/14	QUALITY SYMBOLS	GENERAL TOLERANCES (UNLESS SPECIFIED)	SCALE 4:1	DESIGN UNITS METRIC	THIRD ANGLE PROJECTION	REVISE ON CAD ONLY	
	0 0	4 PLACES ± --- ± --- 3 PLACES ± --- ± --- 2 PLACES ± 0.15 ± --- 1 PLACE ± 0.25 ± --- ANGULAR ± 3 °	DIMENSION STYLE MM ONLY	DRAWN BY RICHARD DATE '01/05/28 CHECKED BY VINCENT DATE '01/05/28 APPROVED BY ERICK DATE '01/05/28	TITLE SATA SYSTEM PLUG R/A REVERSE TYPE	MATERIAL NO. SEE TABLE DOCUMENT NO. SD-67490-001	SHEET NO. 1 OF 1
	DRAFT WHERE APPLICABLE MUST REMAIN WITHIN DIMENSIONS	THIS DRAWING CONTAINS INFORMATION THAT IS PROPRIETARY TO MOLEX INCORPORATED AND SHOULD NOT BE USED WITHOUT WRITTEN PERMISSION	MOLEX INCORPORATED				
	A3						