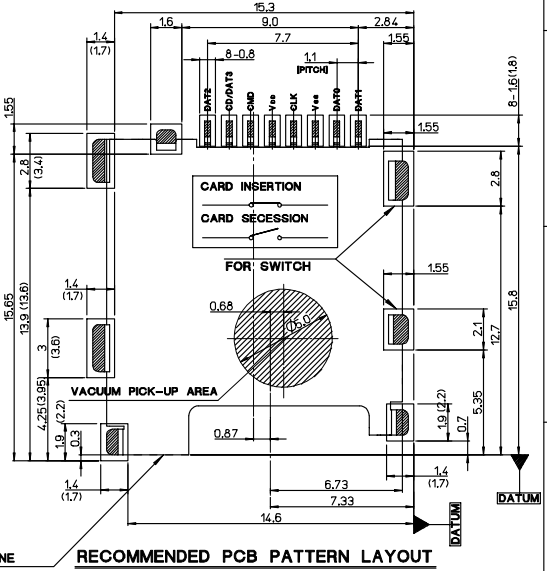
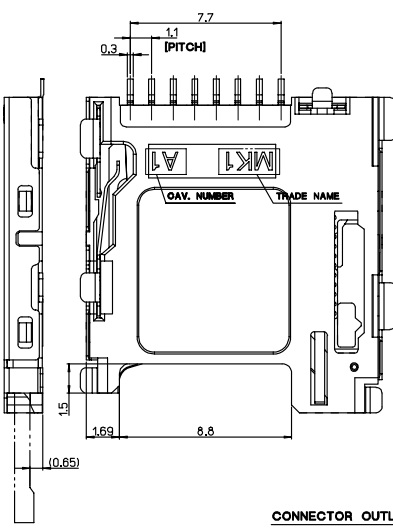
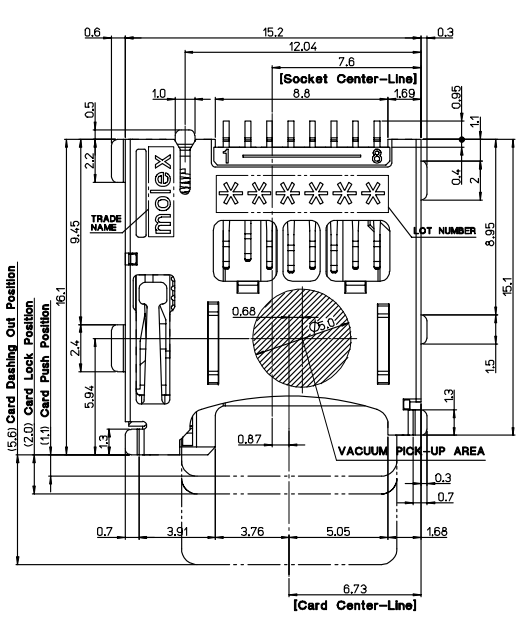


PROJECT NO. SD-49225-201  
 DWG. NO.  
 SIMILAR ITEM  
 DO NOT SCALE DRAWING DIMENSION IN METRIC



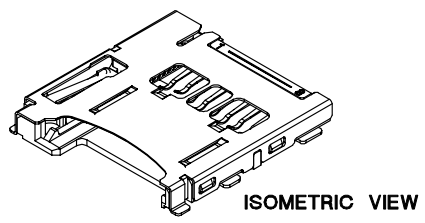
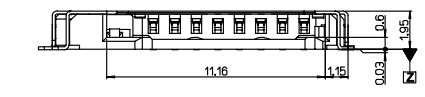
**CONNECTOR OUTLINE**      **RECOMMENDED PCB PATTERN LAYOUT**  
**TOLERANCE : ± 0.05**

\* Normal DIM : Limited  
 \* ( DIM. ) : Recommend

This connector has been tested for compatibility with both TransFlash and microSD cards, however, as this standard is in transition some specifications from different card makers may differ. Please contact Molex Korea before any design-in to discuss card compatibility issues

**NOTES**

1. MATERIALS: SEE TABLE
2. FINISHES: SEE TABLE
3. PRODUCT SPECIFICATION : PS-49225-001
4. COPLANARITY OF SOLDER TAILS : 0.1mm MAX.  
 MISALIGNMENT OF SOLDER TAIL FROM "Z"  
 UPPER DIRECTION 0.05 MAX., LOWER DIRECTION 0.1MAX.
5. PACKAGING SPECIFICATION : PK-49225-201



**ISOMETRIC VIEW**

492250821	49225-0821
<b>MATERIAL NO.</b>	<b>ENGINEERING NO.</b>
DIMENSIONS: <input type="checkbox"/> mm <input type="checkbox"/> INCH <input checked="" type="checkbox"/> mm ONLY	
SHT REV	
REVISE ON CAD ONLY	

<b>NEW RELEASE</b> ECN NO. KOR2007-0077 DRWN: S.H.JOO 06/12/28 CHK: APPR: S.J.SEH	QUALITY SYMBOLS MAJOR = 0 CRITICAL = 0	GENERAL TOLERANCES: (UNLESS SPECIFIED)		SCALE 5 / 1	DESIGN UNITS <input checked="" type="checkbox"/> mm <input type="checkbox"/> INCH	TITLE: <b>microSD MEMORY CARD SOCKET</b> PUSH-PUSH / REVERSE TYPE / WITH SWITCH ( LOW RETENTION FORCE VERSION )
		4 PLACES ±0.15	±	DRAWN BY & DATE S.H.JOO 05/09/14	THIRD ANGLE PROJECTION	
		3 PLACES ±0.15	±	CHECKED BY & DATE		
2 PLACES ±0.15	±	APPROVED BY & DATE S.J.SEH		MOLEX INCORPORATED		
1 PLACE ±0.2	±	CAD FILENAME SD49225002.MI		MATERIAL NO. SEE TABLE	DRAWING NO. SD-49225-201	SHEET NO. 1 OF 2
DRAFT WHERE APPLICABLE MUST REMAIN WITHIN DIMENSIONS		THIS DRAWING CONTAINS INFORMATION THAT IS PROPRIETARY TO MOLEX INCORPORATED AND SHOULD NOT BE USED WITHOUT WRITTEN PERMISSION.				SIZE B

9	SPRING	49225-9001	STAINLESS STEEL	
8	PIN ROD	49225-9002	STAINLESS STEEL	
7	STOPPER TERMINAL	49772-8003	PHOS.-BRONZE	PURE-Sn over Ni
6	GND. TERMINAL	49771-8003	PHOS.-BRONZE	Selective-Au over Ni
5	SWITCH TERMINAL	49770-8003	PHOS.-BRONZE	Selective-Au over Ni
4	HEART CAM	49355-0001	LIQUID CRYSTAL POLYMER	Natural Color
3	HOUSING	49225-0891	LIQUID CRYSTAL POLYMER	
2	METAL SHELL	49769-5003	STAINLESS STEEL	Selective-Au over Ni
1	CONTACT TERMINAL 1,2,3	49768-8*30	PHOS.-BRONZE	Selective-Au over Ni
NO.	DESCRIPTION	ENGINEERING NO.	MATERIALS	FINISHES

DWG. NO. SD-49225-201  
 SIMILAR ITEM  
 PROJECT NO. C  
 B  
 DO NOT SCALE DRAWING DIMENSION IN METRIC

F  
 E  
 D  
 C  
 B  
 A

<b>NEW RELEASE</b> ECN NO. KOR2007-0077 DRWN: S.H.JOO 06/12/29 CHK: APPR: S.J.SEH	QUALITY SYMBOLS MAJOR = 0 CRITICAL = 0 DESCRIPTION REV	GENERAL TOLERANCES: (UNLESS SPECIFIED)		SCALE 5 / 1	DESIGN UNITS <input checked="" type="checkbox"/> MM <input type="checkbox"/> INCH	THIRD ANGLE PROJECTION <input type="checkbox"/> <input checked="" type="checkbox"/>	DIMENSIONS: <input type="checkbox"/> INCH <input type="checkbox"/> INCH <input checked="" type="checkbox"/> MM <input type="checkbox"/> MM ONLY		SHT REV				
		4 PLACES ±0.1	3 PLACES ±0.1	2 PLACES ±0.15	1 PLACE ±0.2	ANGULAR: ± °	DRAWN BY & DATE S.H.JOO 05/09/14		CHECKED BY & DATE S.H.JOO		APPROVED BY & DATE S.J.SEH		TITLE: microSD MEMORY CARD SOCKET PUSH-PUSH / REVERSE TYPE / WITH SWITCH ( LOW RETENTION FORCE VERSION )
DRAFT WHERE APPLICABLE MUST REMAIN WITHIN DIMENSIONS		THIS DRAWING CONTAINS INFORMATION THAT IS PROPRIETARY TO MOLEX INCORPORATED AND SHOULD NOT BE USED WITHOUT WRITTEN PERMISSION.		CAD FILENAME SD49225002.MI		MATERIAL NO. SEE TABLE		DRAWING NO. SD-49225-201		SHEET NO 1 OF 2		SIZE B	

492250821	49225-0821
MATERIAL NO.	ENGINEERING NO.

KOREA MX-A3