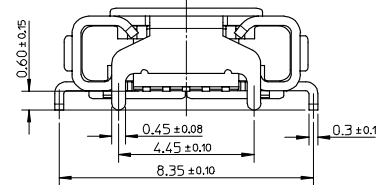
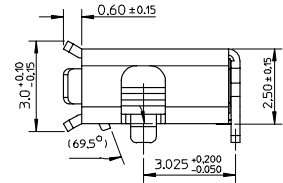
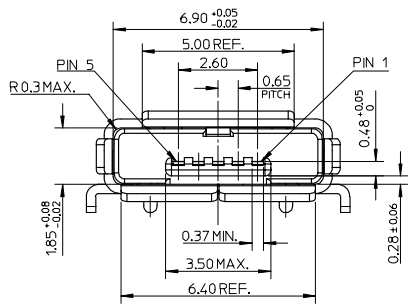
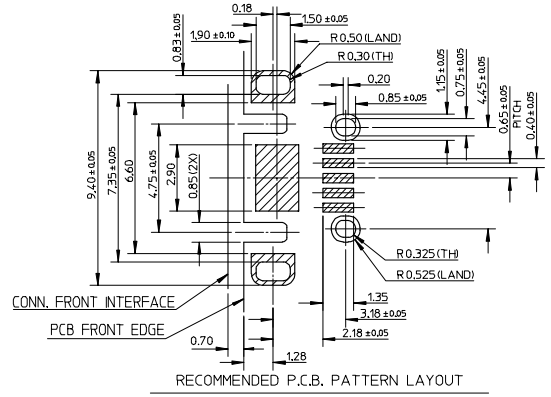
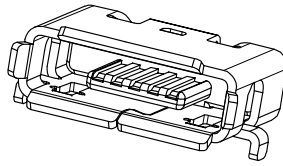
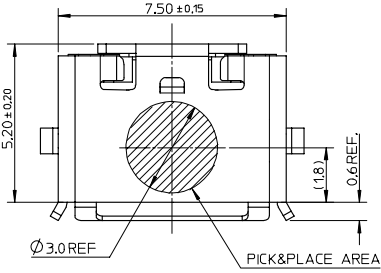
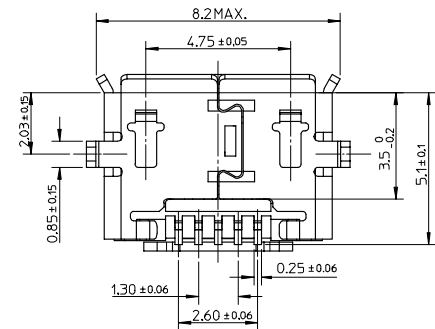


10 9 8 7 6 5 4 3 2 1



NOTE :

- MATERIAL :
HOUSING : LCP.BLACK.UL94V-0
TERMINAL : COPPER ALLOY THICKNESS = 0.15 MM
SHIELD CASE : STAINLESS STEEL THICKNESS = 0.30 MM
- PLATING :
TERMINAL : CONTACT AREA : GOLD FLASH (0.11 MICRON MIN.) OVER MINIMUM 0.75 MICRON Pd/Ni.
SOLDER TAIL AREA : GOLD FLASH (0.05 MICRON MIN.),
UNDER PLATING : NICKEL 2.0 MICROMN MINIMUM.
SHIELD : MATTE TIN 1.27 MICRON MINIMUM.
UNDER PLATING : NICKEL 1.27 MICRON MINIMUM.
- TAIL COPLANARITY 0.08 MM MAXIMUM.
- COMPLIANT TO RoHS DIRECTIVE 2002/95/EC AND ELV IDRECTIVE 2000/53/EC.



NEW RELEASE EC NO. SH2008-0069 DRAWN BY: XJ SONG CHECKED BY: JTIAN APPROVED BY: JINCHEN DATE: 2007/08/07 DATE: 2007/08/07 DATE: 2007/08/30	QUALITY SYMBOLS	GENERAL TOLERANCES (UNLESS SPECIFIED)	DIMENSION STYLE	SCALE	DESIGN UNITS	THIRD ANGLE PROJECTION
	▽=0 ▽=0	mm INCH 4 PLACES ± --- ± --- 3 PLACES ± --- ± --- 2 PLACES ± 0.15 ± --- 1 PLACE ± 0.25 ± --- ANGULAR ± 3 °	MM ONLY	1:1	METRIC	
			DRAWN BY: XJ SONG	DATE: 2007/03/15	TITLE: MICRO USB AB REC. TOP MOUNT ASS'Y	
			CHECKED BY: JTIAN	DATE: 2007/03/15	APPROVED BY: JINCHEN	
			DATE: 2007/03/15	MATERIAL NO. 47590-0001		DOCUMENT NO. SD-47590-001
		DRAFT WHERE APPLICABLE MUST REMAIN WITHIN DIMENSIONS	SIZE: A3	THIS DRAWING CONTAINS INFORMATION THAT IS PROPRIETARY TO MOLEX INCORPORATED AND SHOULD NOT BE USED WITHOUT WRITTEN PERMISSION		