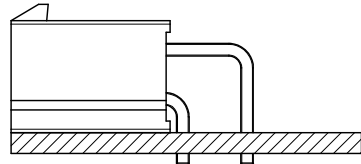


CKT SIZE	MATERIAL NUMBER	DIM 'A'	DIM 'B'
4	46991-1004	.38/9.6	.165/4.20
6	46991-1006	.54/13.8	.331/8.40
8	46991-1008	.71/18.0	.496/12.60
10	46991-1010	.87/22.2	.661/16.80
12	46991-1012	1.04/26.4	.827/21.00
X 14	46991-1014	1.21/30.6	.992/25.20
X 16	46991-1016	1.37/34.8	1.160/29.40
X 18	46991-1018	1.54/39.0	1.323/33.60
X 20	46991-1020	1.70/43.2	1.488/37.80
X 22	46991-1022	1.87/47.4	1.654/42.00
X 24	46991-1024	2.03/51.6	1.819/46.20

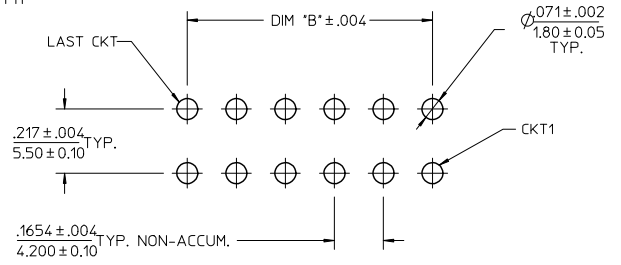
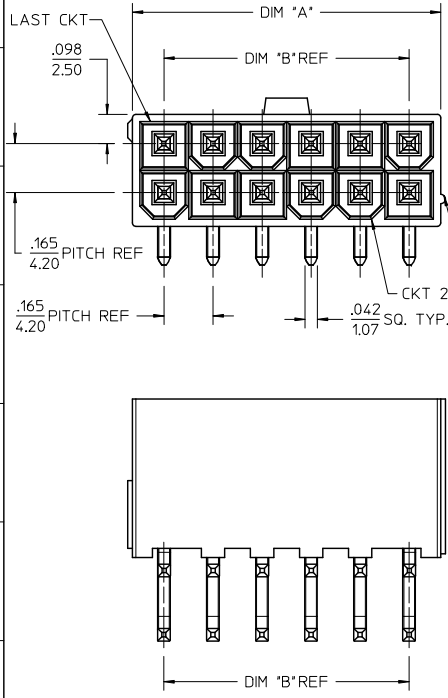
X DESIGNATES NOT TOOLED



SEE NOTE 10

NOTES:

- MATERIAL:
HOUSING - LIQUID CRYSTAL POLYMER (LCP), COLOR: BLACK.
TERMINAL - BRASS
- TERMINAL PLATING: .000100/0.00254 MATTE TIN OVER
.000050/0.00127 NICKEL OVERALL
- PRODUCT SPECIFICATION: PS-46207-001.
- PACKAGING SPECIFICATION: TRAY PACKED PER PK-5569-003.
- PART MATES WITH MINIFIT JR RECEPTACLE SERIES 5557
- DISCOLORIZATION IN THE BANDOLIER CARRIER AREA OF THE PIN IS INHERENT TO THE PLATING PROCESS AND IS DUE TO THE MASKING EFFECT OF THE CARRIER. THIS DISCOLORIZATION IS A NON-FUNCTIONAL AREA OF THE PIN AND WILL NOT AFFECT THE PERFORMANCE OF THE HEADER ASSEMBLY.
- CONNECTORS ARE NOT TO BE MATED OR UNMATED WHILE CIRCUITS ARE LIVE.
- PARTS ARE NOT DESIGNED FOR CURRENT SHARING.
- PART IS INTENDED FOR PIN IN PASTE REFLOW SOLDER ONLY.
- TO AVOID INTERFERENCE BETWEEN THE RECEPTACLE AND PCB, HEADER MUST BE PLACED AT THE EDGE OF PCB AS SHOWN.
- PIN RETENTION IN HOUSING IS 2.2LBS/1KG MIN. BOTH DIRECTIONS.
- THIS PART CONFORMS TO CLASS B REQUIREMENTS OF COSMETIC SPECIFICATION PS-45499-002.



RECOMMENDED PCB HOLE LAYOUT FOR .070/1.78 MAX THICK P.C. BOARD VIEWED FROM COMPONENT SIDE

CORRECT PCB LAYOUT EC NO.: LCP2009-1761 DRAWN BY: JKL CHECKED BY: JSMITH APPROVED BY: JSMITH DATE: 2009/01/28 DATE: 2009/01/29	QUALITY SYMBOLS	GENERAL TOLERANCES (UNLESS SPECIFIED)	DIMENSION STYLE IN/MM	SCALE 4:1	DESIGN UNITS METRIC	THIRD ANGLE PROJECTION
	▽=0	mm INCH	DRAWN BY JKLOSTERMEIE DATE 2008/12/19	TITLE	MINIFIT JR RIGHT ANGLE HEADER ASSEMBLY W/O MOUNTING PEGS	
	▽=0	4 PLACES ± --- ± ---	CHECKED BY JSMITH DATE 2008/12/10	MOLEX INCORPORATED		
		3 PLACES ± --- ± .010	APPROVED BY FSMITH DATE 2008/12/15	MATERIAL NO. SEE CHART	DOCUMENT NO. SD-46991-001	SHEET NO. 1 OF 1
DRAFT WHERE APPLICABLE MUST REMAIN WITHIN DIMENSIONS		THIS DRAWING CONTAINS INFORMATION THAT IS PROPRIETARY TO MOLEX INCORPORATED AND SHOULD NOT BE USED WITHOUT WRITTEN PERMISSION				