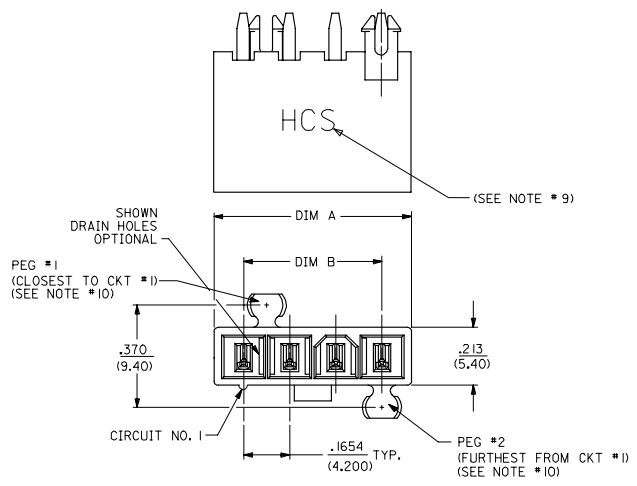
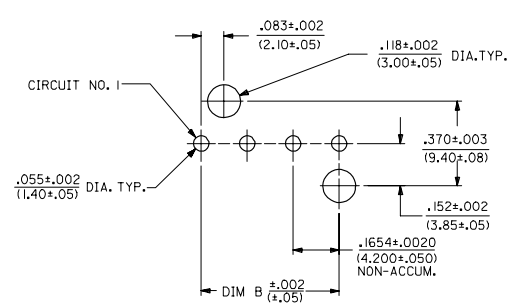
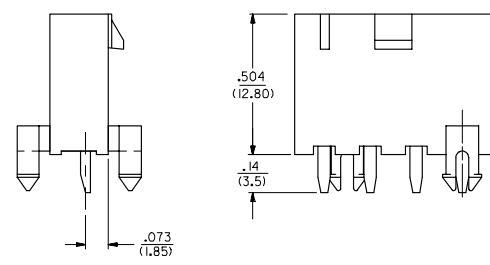


CKT SIZE	DIM A	DIM B
4	.709 (18.00)	.496 (12.60)
5	.874 (22.20)	.661 (16.80)
6	1.039 (26.40)	.827 (21.00)
7	1.205 (30.60)	.992 (25.20)
8	1.370 (34.80)	1.157 (29.40)
9	1.535 (39.00)	1.323 (33.60)
10	1.701 (43.20)	1.488 (37.80)
11	1.866 (47.40)	1.654 (42.00)
12	2.031 (51.60)	1.819 (46.20)



- NOTES:
- MATERIALS:
HOUSING:
*1"-NYLON 6/6, UL94 V-2, COLOR: NATURAL
*2"-NYLON 6/6, UL94 V-0, COLOR: NATURAL
*3"-NYLON 6/6, UL94 V-2, COLOR: BLACK
TERMINALS:
COPPER ALLOY
 - TERMINAL PLATING:
*T"=.000100/(0.00254) MIN. BRIGHT TIN OVER
.000050/(0.00127) MIN. NICKEL
*W"=.000030/(0.00076) MIN. SELECT GOLD AND
.000100/(0.00254) MIN. SELECT MATTE TIN
OVER .000050/(0.00127) MIN. NICKEL OVERALL
*3"=.000100/(0.00254) MIN. MATTE TIN OVER
.000050/(0.00127) MIN. NICKEL
*THE PRIMARY SHIPPING CARTON WILL BE LABELED
"ELV AND ROHS COMPLIANT", CARTONS WITHOUT THIS
LABEL MAY CONTAIN PRODUCT WITH TIN-LEAD PLATING.
 - PRODUCT SPECIFICATION: PS-44476-001
 - PACKAGING: SEE CHARTS
 - PART MATES WITH MINI-FIT JR. RECEPTACLE NO. 5557.
 - PART IS NOT DESIGNED FOR CURRENT SHARING.
 - PARTS ARE NOT TO BE MATED OR UN-MATED WHILE CIRCUITS ARE LIVE.
 - 44472-2470 ONLY FOR WIDER LOCKING RAMP.
 - PARTS PRODUCED AFTER JULY 1, 2004 WILL HAVE "HCS" MARKING INSTEAD OF BLACK STRIPE.
 - SEE CHART FOR PARTS WITH PEGS REMOVED.
 - PART CONFORMS TO CLASS 'B' REQUIREMENTS OF COSMETIC SPECIFICATION PS-45499-002.



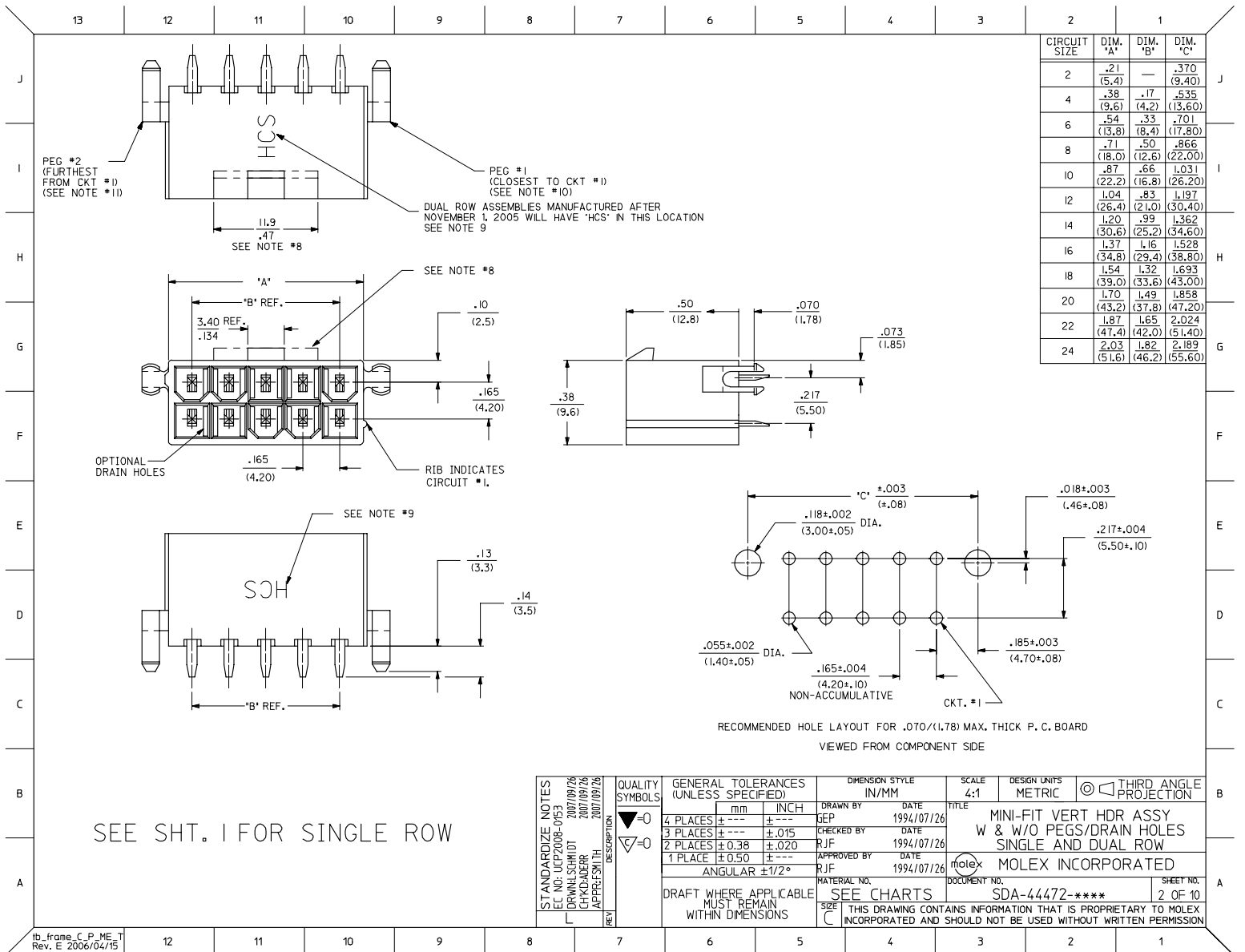
RECOMMENDED HOLE LAYOUT FOR
.070/(1.78) MAX. THICK P. C. BOARD
VIEWED FROM COMPONENT SIDE

REV	DESCRIPTION
10	L
9	L
8	L
7	L
6	L
5	L
4	L
3	L
2	L
1	L

LEGEND:
44472 - ** **
CIRCUIT SIZE
(04-12 FOR SINGLE ROW)
(02-24 FOR DUAL ROW)
ASSEMBLY VERSION
(01 THRU 49 FOR SINGLE ROW)
(50 THRU 99 FOR DUAL ROW)

SEE SHT. 2 FOR DUAL ROW
• THE CHART FOR SINGLE ROW PRODUCT IS ON PAGE 7

STANDARDIZE NOTES	QUALITY SYMBOLS	GENERAL TOLERANCES (UNLESS SPECIFIED)		DIMENSION STYLE	SCALE	DESIGN UNITS	THIRD ANGLE PROJECTION
		mm	INCH	IN/MM	4:1	METRIC	
EC NO: UCP2008-0163 DRW:LSCHMIDT 2007/09/26 CHK:RADER 2007/09/26 APPR:SMITH 2007/09/26	▽=0 ▽=0	4 PLACES ±.005 ±.005	3 PLACES ±.015 ±.015	DRAWN BY SEP	DATE 1994/07/25	MINI-FIT VERT HDR ASSY W & W/O PEGS/DRAIN HOLES SINGLE AND DUAL ROW MOLEX INCORPORATED	SHEET NO. 1 OF 10
		2 PLACES ±0.38 ±.020	1 PLACE ±0.50 ±.020	CHECKED BY R/JF	DATE 1994/07/25		
		ANGULAR ±1/2°		APPROVED BY R/JF	DATE 1994/07/25		
		DRAFT WHERE APPLICABLE MUST REMAIN WITHIN DIMENSIONS		MATERIAL NO. SEE CHARTS	DOCUMENT NO. SDA-44472-****		
THIS DRAWING CONTAINS INFORMATION THAT IS PROPRIETARY TO MOLEX INCORPORATED AND SHOULD NOT BE USED WITHOUT WRITTEN PERMISSION							



CIRCUIT SIZE	DIM. 'A'	DIM. 'B'	DIM. 'C'
2	.21 (5.4)	—	.370 (9.40)
4	.38 (9.6)	.17 (4.2)	.535 (13.60)
6	.54 (13.8)	.33 (8.4)	.701 (17.80)
8	.71 (18.0)	.50 (12.6)	.866 (22.00)
10	.87 (22.2)	.66 (16.8)	1.031 (26.20)
12	1.04 (26.4)	.83 (21.0)	1.197 (30.40)
14	1.20 (30.6)	.99 (25.2)	1.362 (34.60)
16	1.37 (34.8)	1.16 (29.4)	1.528 (38.80)
18	1.54 (39.0)	1.32 (33.6)	1.693 (43.00)
20	1.70 (43.2)	1.49 (37.8)	1.858 (47.20)
22	1.87 (47.4)	1.65 (42.0)	2.024 (51.40)
24	2.03 (51.6)	1.82 (46.2)	2.189 (55.60)

STANDARDIZE NOTES EC NO. UCP2008-0163 DRAWN/SCHMIDT 2007/09/26 CHK/ADDER 2007/09/26 APPR/SMITH 2007/09/26	QUALITY SYMBOLS	GENERAL TOLERANCES (UNLESS SPECIFIED)	DIMENSION STYLE IN/MM	SCALE 4:1	DESIGN UNITS METRIC	THIRD ANGLE PROJECTION	
	▽=0	4 PLACES ± .005 ± .005	DRAWN BY SEP	DATE 1994/07/26	TITLE MINI-FIT VERT HDR ASSY W & W/O PEGS/DRAIN HOLES SINGLE AND DUAL ROW		
	▽=0	3 PLACES ± .015 ± .015	CHECKED BY R/JF	DATE 1994/07/26	MOLEX INCORPORATED		
	▽=0	2 PLACES ± 0.38 ± .020	APPROVED BY R/JF	DATE 1994/07/26	MATERIAL NO. SEE CHARTS	DOCUMENT NO. SDA-44472-****	SHEET NO. 2 OF 10
REV	DESCRIPTION	ANGULAR ±1/2°	DRAFT WHERE APPLICABLE MUST REMAIN WITHIN DIMENSIONS				THIS DRAWING CONTAINS INFORMATION THAT IS PROPRIETARY TO MOLEX INCORPORATED AND SHOULD NOT BE USED WITHOUT WRITTEN PERMISSION

tb_frame_C_P_ME_T
Rev. E 2006/04/15

	13	12	11	10	9	8	7	6	5	4	3	2	1																					
J	PLATING: 1 (SEE NOTE 2) DRAINS: WITHOUT DRAIN HOLES PEGS: WITH PEGS MAT'L: 94V-2 [NATURAL] PACKAGING: PK-44472-001			PLATING: 1 (SEE NOTE 2) DRAINS: WITHOUT DRAIN HOLES PEGS: WITH PEGS MAT'L: 94V-0 [NATURAL] PACKAGING: PK-44472-001			PLATING: 1 (SEE NOTE 2) DRAINS: WITH DRAIN HOLES PEGS: WITH PEGS MAT'L: 94V-2 [NATURAL] PACKAGING: PK-44472-001			PLATING: 1 (SEE NOTE 2) DRAINS: WITH DRAIN HOLES PEGS: WITH PEGS MAT'L: 94V-0 [NATURAL] PACKAGING: PK-44472-001			J																					
I	ITEM NO.		CKTS	ITEM NO.		CKTS	ITEM NO.		CKTS	ITEM NO.		CKTS																						
	44472-0250		2	44472-0251		2	44472-0252		2	44472-0253		2																						
	44472-0450		4	44472-0451		4	44472-0452		4	44472-0453		4																						
	44472-0650		6	44472-0651		6	44472-0652		6	44472-0653		6																						
	44472-0850		8	44472-0851		8	44472-0852		8	44472-0853		8																						
	44472-1050		10	44472-1051		10	44472-1052		10	44472-1053		10																						
	44472-1250		12	44472-1251		12	44472-1252		12	44472-1253		12																						
	44472-1450		14	44472-1451		14	44472-1452		14	44472-1453		14																						
	44472-1650		16	44472-1651		16	44472-1652		16	44472-1653		16																						
H	44472-1850		18	44472-1851		18	44472-1852		18	44472-1853		18																						
	44472-2050		20	44472-2051		20	44472-2052		20	44472-2053		20																						
	44472-2250		22	44472-2251		22	44472-2252		22	44472-2253		22																						
	44472-2450		24	44472-2451		24	44472-2452		24	44472-2453		24																						
G	PLATING: 1 (SEE NOTE 2) DRAINS: WITHOUT DRAIN HOLES PEGS: WITHOUT PEGS MAT'L: 94V-2 [NATURAL] PACKAGING: PK-44472-001			PLATING: 1 (SEE NOTE 2) DRAINS: WITHOUT DRAIN HOLES PEGS: WITHOUT PEGS MAT'L: 94V-0 [NATURAL] PACKAGING: PK-44472-001									G																					
F	ITEM NO.	HOUSING NO.	CKTS	ITEM NO.		CKTS							F																					
	44472-0254		2	44472-0255		2																												
	44472-0454		4	44472-0455		4																												
	44472-0654		6	44472-0655		6																												
	44472-0854		8	44472-0855		8																												
	44472-1054		10	44472-1055		10																												
	44472-1254		12	44472-1255		12																												
	44472-1454		14	44472-1455		14																												
	44472-1654		16	44472-1655		16																												
	44472-1854		18	44472-1855		18																												
	44472-2054		20	44472-2055		20																												
	44472-2254		22	44472-2255		22																												
	44472-2454		24	44472-2455		24																												
D	• ITEMS PRECEDED BY AN *X* ARE NOT AVAILABLE.												D																					
C													C																					
B													B																					
A													A																					
PLATING NOTE EC NO: UCP2008-0163 DRW:LSCHMIDT 2007/09/26 CHK:ADDER 2007/09/26 APP:FSMITH 2007/09/26													QUALITY SYMBOLS ▽=0 ▽=0	GENERAL TOLERANCES (UNLESS SPECIFIED) <table border="1"> <tr> <td></td> <td>mm</td> <td>INCH</td> </tr> <tr> <td>4 PLACES</td> <td>±.005</td> <td>±.0005</td> </tr> <tr> <td>3 PLACES</td> <td>±.005</td> <td>±.0005</td> </tr> <tr> <td>2 PLACES</td> <td>±.005</td> <td>±.0005</td> </tr> <tr> <td>1 PLACE</td> <td>±.005</td> <td>±.0005</td> </tr> </table> ANGULAR ±1/2°		mm	INCH	4 PLACES	±.005	±.0005	3 PLACES	±.005	±.0005	2 PLACES	±.005	±.0005	1 PLACE	±.005	±.0005	DIMENSION STYLE IN/MM DRAWN BY LEM DATE 1999/02/22 CHECKED BY MAB DATE 1999/02/22 APPROVED BY RRE DATE 1999/02/22	SCALE --- DESIGN UNITS METRIC THIRD ANGLE PROJECTION	TITLE MINI-FIT VERT HDR ASSY W & W/O PEGS/DRAIN HOLES SINGLE AND DUAL ROW MOLEX MOLEX INCORPORATED	MATERIAL NO. SEE CHART DOCUMENT NO. SDA-44472-**** SHEET NO. 3 OF 10	THIS DRAWING CONTAINS INFORMATION THAT IS PROPRIETARY TO MOLEX INCORPORATED AND SHOULD NOT BE USED WITHOUT WRITTEN PERMISSION
	mm	INCH																																
4 PLACES	±.005	±.0005																																
3 PLACES	±.005	±.0005																																
2 PLACES	±.005	±.0005																																
1 PLACE	±.005	±.0005																																
ib_frame_C_P_ME_T Rev. E 2006/04/15	12	11	10	9	8	7	6	5	4	3	2	1																						