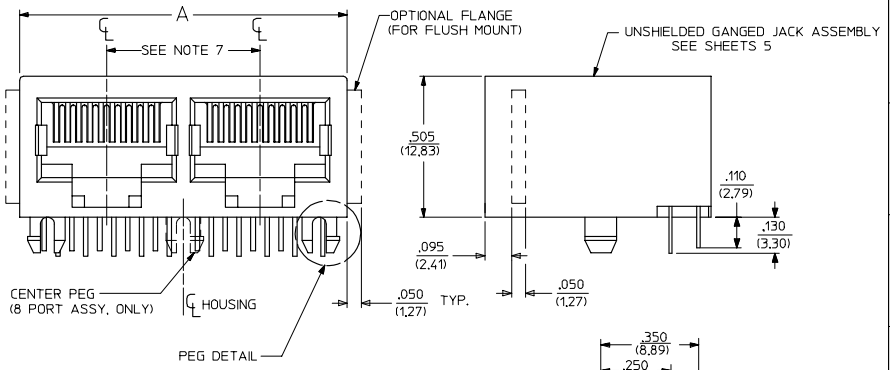
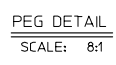
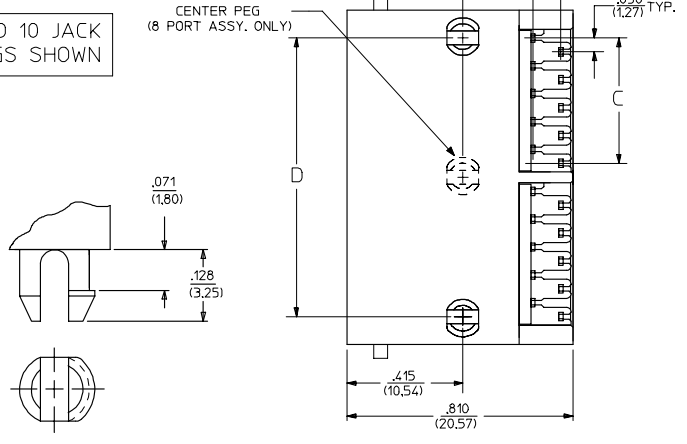


- NOTES:
- 1) MATERIAL:
HOUSING: GLASS FILLED NYLON, UL94V-0, COLOR: BLACK
INSULATOR: GLASS FILLED NYLON, UL94V-0, COLOR: BLACK
TERMINALS: PHOSPHOR BRONZE: .012/(0,30) THICK
 - 2) FINISH:
TERMINALS:
SELECT GOLD IN CONTACT AREA: 50 MICRONS MIN.
*SELECT TIN IN PC TAIL AREA: 100 MICRONS MIN.
WITH OVERALL NICKEL UNDERPLATE: 50 MICRONS MIN.
*THE PRIMARY SHIPPING CARTON WILL BE LABELED 'COMPLIANT TO ROHS DIRECTIVE 2002/95/EC AND ELV ANNEX II OF DIRECTIVE 2000/53/EC'. CARTONS WITHOUT THIS LABEL MAY CONTAIN PRODUCT WITH TIN-LEAD IN THE PC TAIL AREA.
 - 3) PRODUCT SPECIFICATION AND PROCESSING PARAMETERS: PS-43223-001.
 - 4) ASSEMBLES TO BE PACKAGED IN TRAYS, UNLESS OTHERWISE SPECIFIED.
 - 5) SEE SHEETS 7-9 FOR P.C. BOARD LAYOUTS.
 - 6) SEE SHEET 3 FOR THE SHIELDED JACK ASSEMBLY.
 - 7) FOR 6 CIRCUIT JACKS CENTERLINE TO CENTERLINE SPACING IS .448/(11,38). FOR 8 CIRCUIT JACKS CENTERLINE TO CENTERLINE SPACING IS .550/(13,97).
 - 8) ALL UNTOLERANCED DIMENSIONS ARE SHOWN FOR REFERENCE ONLY.



2 PORT 8 LOADED 10 JACK W/ SNAP-FIT PEGS SHOWN



6 CIRCUIT HOUSING

CIRCUIT SIZE	NO. OF PORTS	DIM. A	DIM. C	DIM. D
6	2	.985 (25,02)	.250 (6,35)	.848 (21,54)
4	2	.985 (25,02)	.150 (3,81)	.848 (21,54)
2	2	.985 (25,02)	.050 (1,27)	.848 (21,54)
6	3	1.433 (36,40)	.250 (6,35)	1.296 (32,92)
4	3	1.433 (36,40)	.150 (3,81)	1.296 (32,92)
2	3	1.433 (36,40)	.050 (1,27)	1.296 (32,92)
6	4	1.881 (47,78)	.250 (6,35)	1.744 (44,30)
4	4	1.881 (47,78)	.150 (3,81)	1.744 (44,30)
2	4	1.881 (47,78)	.050 (1,27)	1.744 (44,30)
6	5	2.329 (59,16)	.250 (6,35)	2.192 (55,68)
4	5	2.329 (59,16)	.150 (3,81)	2.192 (55,68)
2	5	2.329 (59,16)	.050 (1,27)	2.192 (55,68)
6	6	2.777 (70,54)	.250 (6,35)	2.640 (67,06)
4	6	2.777 (70,54)	.150 (3,81)	2.640 (67,06)
2	6	2.777 (70,54)	.050 (1,27)	2.640 (67,06)
6	8	3.673 (93,29)	.250 (6,35)	3.536 (89,81)
4	8	3.673 (93,29)	.150 (3,81)	3.536 (89,81)
2	8	3.673 (93,29)	.050 (1,27)	3.536 (89,81)

8 CIRCUIT HOUSING

CIRCUIT SIZE	NO. OF PORTS	DIM. A	DIM. C	DIM. D
10	2	1.200 (30,48)	.250 (6,35)	1.000 (25,40)
8	2	1.200 (30,48)	.150 (3,81)	1.000 (25,40)
6	2	1.200 (30,48)	.050 (1,27)	1.000 (25,40)
10	3	1.750 (44,45)	.250 (6,35)	1.550 (39,37)
8	3	1.750 (44,45)	.150 (3,81)	1.550 (39,37)
6	3	1.750 (44,45)	.050 (1,27)	1.550 (39,37)
10	4	2.300 (58,42)	.250 (6,35)	2.100 (53,34)
8	4	2.300 (58,42)	.150 (3,81)	2.100 (53,34)
6	4	2.300 (58,42)	.050 (1,27)	2.100 (53,34)
10	5	2.850 (72,39)	.250 (6,35)	2.650 (67,31)
8	5	2.850 (72,39)	.150 (3,81)	2.650 (67,31)
6	5	2.850 (72,39)	.050 (1,27)	2.650 (67,31)
10	6	3.400 (86,36)	.250 (6,35)	3.200 (81,28)
8	6	3.400 (86,36)	.150 (3,81)	3.200 (81,28)
6	6	3.400 (86,36)	.050 (1,27)	3.200 (81,28)
10	8	4.500 (114,30)	.250 (6,35)	4.300 (109,22)
8	8	4.500 (114,30)	.150 (3,81)	4.300 (109,22)
6	8	4.500 (114,30)	.050 (1,27)	4.300 (109,22)

ADD TUBE PKG OPT EC NO: UCP2004-1271 DRAWN: NIKAMARAL004/01/14 CHKD: NIKAMARAL004/01/14 APPR: BMRKUS 2004/01/14	QUALITY SYMBOLS 0 0	GENERAL TOLERANCES (UNLESS SPECIFIED)	SCALE 4:1	DESIGN UNITS INCH	THIRD ANGLE PROJECTION	REVISE ON CAD ONLY
		4 PLACES ± --- ± --- 3 PLACES ± --- ± --- 2 PLACES ± --- ± --- 1 PLACE ± --- ± ---	DIMENSION STYLE IN/MM	TITLE LOW PROFILE GANGED, RIGHT ANGLE MODULAR JACK ASSEMBLY		
DESCRIPTION	ANGULAR ±1/2°	DRAFT WHERE APPLICABLE	DRAWN BY JTR	DATE 10/18/1993	CHECKED BY JTR	DATE 10/18/1993
REV	MUST REMAIN WITHIN DIMENSIONS	APPROVED BY RAS	DATE 10/18/1993	MATERIAL NO. SEE SHEET 5	DOCUMENT NO. SDA-43223	SHEET NO. 1 OF 9
THIS DRAWING CONTAINS INFORMATION THAT IS PROPRIETARY TO MOLEX INCORPORATED AND SHOULD NOT BE USED WITHOUT WRITTEN PERMISSION						

9	H
8	H
7	H
6	H
5	H
4	J
3	J
2	J
1	J
SH	REV

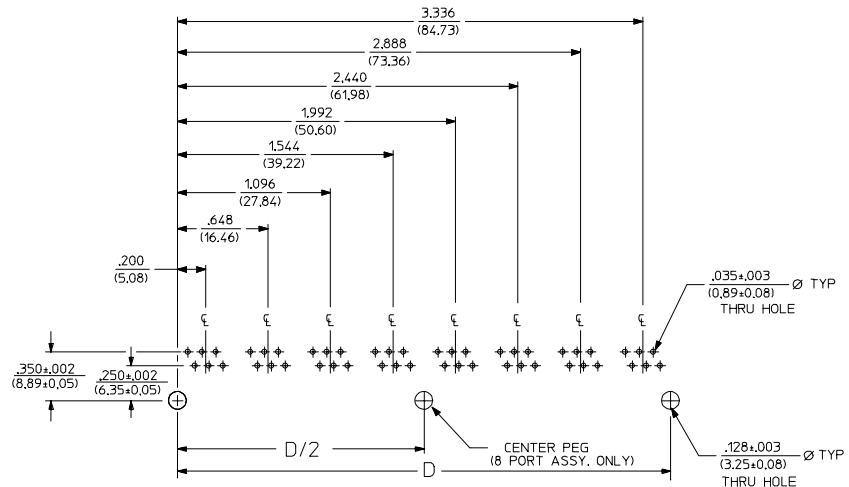
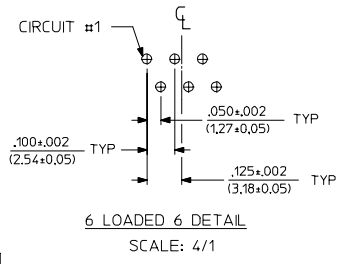
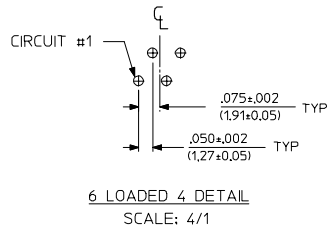
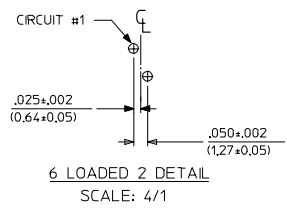
FLUSH MOUNT (UNSHIELDED)							FLANGELESS (UNSHIELDED)						
ASSEMBLY NUMBER	CONNECTOR SIZE	NUMBER OF CIRCUITS	NUMBER OF PORTS	PACKAGING STYLE	PACKAGING SPECIFICATION		ASSEMBLY NUMBER	CONNECTOR SIZE	NUMBER OF CIRCUITS	NUMBER OF PORTS	PACKAGING STYLE	PACKAGING SPECIFICATION	
43223-6001	6	6	2	TRAY	PK-43249-004		43223-6101	6	6	2	TRAY	PK-43249-004	
43223-6004	6	6	3				43223-6104	6	6	3			
43223-6007	6	6	4				43223-6107	6	6	4			
43223-6010	6	6	5				43223-6110	6	6	5			
43223-6013	6	6	6				43223-6113	6	6	6			
43223-6019	6	6	8				43223-6119	6	6	8			
43223-6022	6	4	2				43223-6122	6	4	2			
43223-6025	6	4	3				43223-6125	6	4	3			
43223-6028	6	4	4				43223-6128	6	4	4			
43223-6031	6	4	5				43223-6131	6	4	5			
43223-6034	6	4	6				43223-6134	6	4	6			
43223-6040	6	4	8				43223-6140	6	4	8			
43223-6043	6	2	2				43223-6143	6	2	2			
43223-6046	6	2	3				43223-6146	6	2	3			
43223-6049	6	2	4				43223-6149	6	2	4			
43223-6052	6	2	5				43223-6152	6	2	5			
43223-6055	6	2	6				43223-6155	6	2	6			
43223-6058	6	2	8	TRAY	PK-43249-004		43223-6158	6	2	8	TRAY	PK-43249-004	
43223-8001	8	10	2	TRAY	PK-43249-004		43223-8101	8	10	2	TRAY	PK-43249-004	
43223-8004	8	10	3				43223-8104	8	10	3			
43223-8007	8	10	4				43223-8107	8	10	4			
43223-8010	8	10	5				43223-8110	8	10	5			
43223-8013	8	10	6				43223-8113	8	10	6			
43223-8019	8	10	8				43223-8119	8	10	8			
43223-8022	8	8	2				43223-8122	8	8	2			
43223-8025	8	8	3				43223-8125	8	8	3			
43223-8028	8	8	4				43223-8131	8	8	4			
43223-8031	8	8	5				43223-8140	8	8	4			
43223-8034	8	8	6				43223-8149	8	8	5			
43223-8040	8	8	8				43223-8158	8	8	6			
43223-8041	8	4	5				43223-8176	8	8	8	TRAY	PK-43249-004	
43223-8042	8	6	3	TRAY	PK-43249-004								

FLANGELESS (SHIELDED)							
ASSEMBLY NUMBER	DIMENSION 'B'	CONNECTOR SIZE	NUMBER OF CIRCUITS	NUMBER OF PORTS	NUMBER OF REAR SHIELD GROUND TABS	PACKAGING STYLE	PACKAGING SPECIFICATION
43223-8128	.180	8	8	2	1		
43223-8146	.180	8	8	4	3	TRAY	PK-44150-004
43223-8164	.180	8	8	6	5		
43223-8182	.180	8	8	8	7		
43223-8185	.180	8	8	8	1		
43223-8188	.180	8	8	4	1		
43223-8194	.180	8	2	8	7	TRAY	PK-44150-004
43223-8301	.145	8	8	2	1	TRAY	PK-44150-004
43223-8302	.145	8	8	4	3		
43223-8303	.145	8	8	6	5		
43223-8304	.145	8	8	8	7		
43223-8305	.145	8	8	8	1		
43223-8306	.145	8	8	4	1		
43223-8307	.145	8	2	8	7	TRAY	PK-44150-004

43223-8191		8	6	2	TUBE	PK-43249-005
43223-8192		8	4	4	TUBE	PK-43249-005
43223-8193		8	4	3	TUBE	PK-43249-005
43223-8195		8	8	2	TUBE	PK-43249-005
43223-8196		8	8	3	TUBE	PK-43249-005
43223-8197		8	8	4	TUBE	PK-43249-005

SNAP FIT PEG VERSIONS

SEE SHEET ONE IEC NO. UCP2004-0870 DRAWN: LSCHMIDT 2004/01/02 CHKD: LSCHMIDT 2004/01/02 APPR: F SMITH 2004/01/03	QUALITY SYMBOLS	GENERAL TOLERANCES (UNLESS SPECIFIED)	SCALE 4:1	DESIGN UNITS INCH	THIRD ANGLE PROJECTION	REVISE ON CAD ONLY
	▽ .0	4 PLACES ± .005 ± .005	DIMENSION STYLE IN/MM		LOW PROFILE RIGHT ANGLE GANGED MODULAR JACK ASSEMBLY	
	▽ .0	3 PLACES ± .005 ± .005	DRAWN BY JTR DATE 10/12/1993		MOLEX INCORPORATED	
		2 PLACES ± .005 ± .005	CHECKED BY JTR DATE 10/12/1993		MATERIAL NO. SEE CHART	DOCUMENT NO. SDA-43223
	1 PLACE ± .005 ± .005	ANGULAR ±1/2°	APPROVED BY RAS DATE 10/12/1993	THIS DRAWING CONTAINS INFORMATION THAT IS PROPRIETARY TO MOLEX INCORPORATED AND SHOULD NOT BE USED WITHOUT WRITTEN PERMISSION		
		DRAFT WHERE APPLICABLE				
		MUST REMAIN WITHIN DIMENSIONS				



SUGGESTED P.C. BOARD LAYOUT
COMPONENT SIDE OF BOARD
8 PORT, 6 LOADED 6, LAYOUT SHOWN
(SNAP-FIT & PRESS-FIT VERSIONS)

NUMBER OF PORTS	DIM. D
2	.848 (21.54)
3	1.296 (32.92)
4	1.744 (44.30)
5	2.192 (55.68)
6	2.640 (67.06)
8	3.536 (89.81)

SEE SHEET ONE EC NO. UCP2004-0870 DRAWN:LSCHMIDT 2004/01/02 CHKD:LSCHMIDT 2004/01/02 APPR:FSMITH 2004/01/03	QUALITY SYMBOLS ▽ .0 ▽ .0	GENERAL TOLERANCES (UNLESS SPECIFIED) 4 PLACES ± --- ± --- 3 PLACES ± --- ± .005 2 PLACES ± .13 ± .01 1 PLACE ± 0.25 ± --- ANGULAR ±1/2°	SCALE 2:1 DESIGN UNITS INCH DIMENSION STYLE IN/MM	THIRD ANGLE PROJECTION REVISE ON CAD ONLY
	DRAFT WHERE APPLICABLE MUST REMAIN WITHIN DIMENSIONS	DRAWN BY JTR DATE 10/12/1993 CHECKED BY JTR DATE 10/12/1993 APPROVED BY RAS DATE 10/12/1993	TITLE LOW PROFILE RIGHT ANGLE GANGED MODULAR JACK ASSEMBLY MOLEX INCORPORATED	MATERIAL NO. SEE SHT 5.6 DOCUMENT NO. SDA-43223 SHEET NO. 7 OF 9

tb_frame_C_P_ME_T Rev. C 2002/05/05