

FEATURES AND SPECIFICATIONS

Features and Benefits

- Snap-in peg locks header to PCB for optimum retention
- Fully polarized to mating receptacle
- Surface Mount Compatible

Reference Information

Product Specification: PS-43045
 Packaging: Tray
 UL File No.: E29179
 CSA File No.: LR19980
 TUV License No.: R95107
 Mates With: 43025
 Designed In: Millimeters

Electrical

Voltage: 250V
 Current: 5.0A max.
 Contact Resistance: 10mΩ max.
 Dielectric Withstanding Voltage: 1500V AC
 Insulation Resistance: 1000 MΩ min.

Mechanical

Insertion Force to PCB: 7.5kgf max. (16.5 lb)

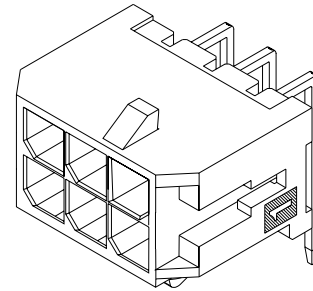
Physical

Housing: High temperature LCP, UL 94V-0
 Contact: Brass
 Plating: Tin or Gold

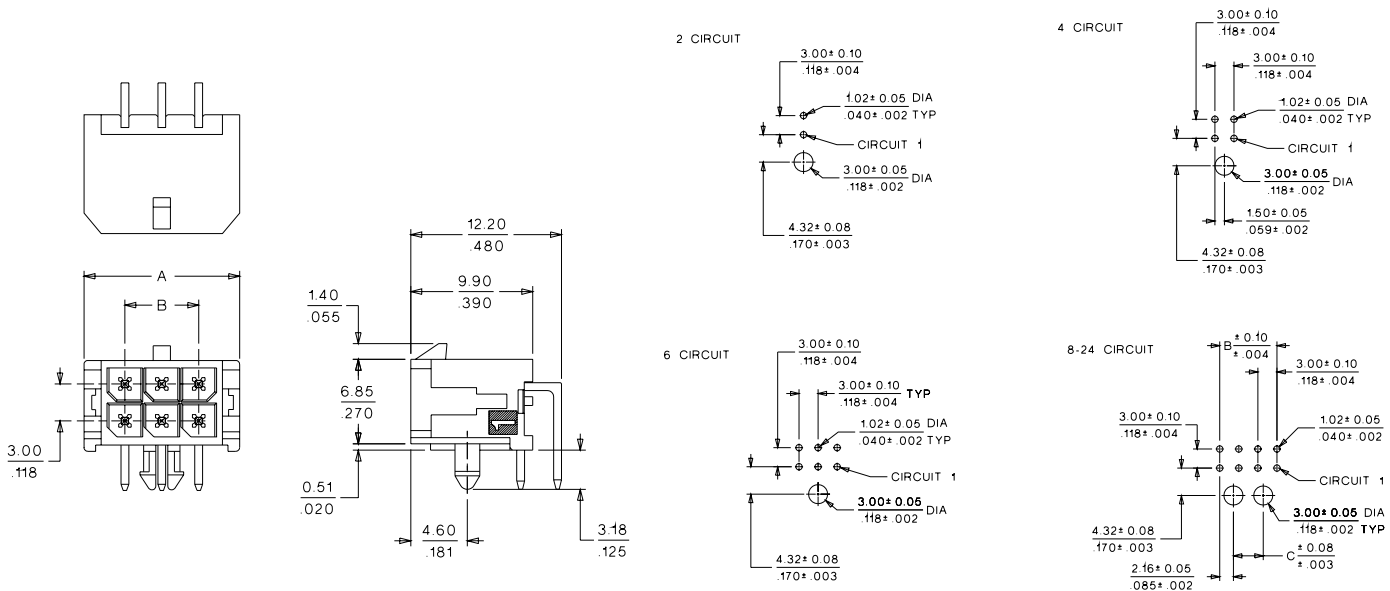


**3.00mm (.118") Pitch
 Micro-Fit 3.0™
 Wire-to-Board
 Header**

**43045
 Dual Row
 Right Angle**



CATALOG DRAWING (FOR REFERENCE ONLY)



ORDERING INFORMATION AND DIMENSIONS

Circuits	Order No.			Dimension		
	Tin	15μ" Gold	30μ" Gold	A	B	C
2	• 43045-0200	43045-0201	• 43045-0202	6.65 (.262)		
4	• 43045-0400	43045-0401	• 43045-0402	9.65 (.380)	3.00 (.118)	
6	• 43045-0600	43045-0601	• 43045-0602	12.65 (.498)	6.00 (.236)	
8	• 43045-0800	43045-0801	• 43045-0802	15.65 (.616)	9.00 (.354)	4.70 (.185)
10	• 43045-1000	43045-1001	• 43045-1002	18.65 (.734)	12.00 (.472)	7.70 (.303)
12	• 43045-1200	43045-1201	• 43045-1202	21.65 (.852)	15.00 (.591)	10.70 (.421)
14	• 43045-1400	43045-1401	• 43045-1402	24.65 (.970)	18.00 (.709)	13.70 (.539)
16	• 43045-1600	43045-1601	• 43045-1602	27.65 (1.088)	21.00 (.827)	16.70 (.657)
18	• 43045-1800	43045-1801	• 43045-1802	30.65 (1.206)	24.00 (.945)	19.70 (.776)
20	• 43045-2000	43045-2001	• 43045-2002	33.65 (1.325)	27.00 (1.063)	22.70 (.894)
22	• 43045-2200	43045-2201	• 43045-2202	36.65 (1.443)	30.00 (1.181)	25.70 (1.012)
24	• 43045-2400	43045-2401	• 43045-2402	39.65 (1.561)	33.00 (1.299)	28.70 (1.130)

• US Standard Product, available through Molex franchised distributors