

# .375" PCB Barrier Terminal Strip

## Description

The series 72 PCB terminal strip is a workhorse and our most popular product series. The product can be configured from 15 to 25 Amps and from 150 to 300 Volts.

The product is available in standard and tri-barrier construction and can be configured with a broad selection of screws, hardware, mounting and terminal options.

Made in the USA, all Beau terminal blocks embody the highest quality standards in the industry-using the finest materials and world class manufacturing processes. They meet or exceed all applicable industry standards.

## Features

- **Standard and Tri-barrier construction** is available to provide the packaging options you need.
- **Robust and durable**, 72 series screw terminals are ultrasonically welded into the thermoplastic insulator, eliminating terminal twisting and associated solder joint failure.
- **Molded to exact length**, with no ugly saw cuts, Beau terminal strips make your products look more professional.
- **Wide variety of options.** Our broad range of screw, terminal, hardware and mounting options allows us to save you assembly costs and improve interconnect performance.



## PRODUCT RATINGS

### #6-32 BINDING HEAD SCREW

<b>UL</b>	Class B	15 Amps @ 300 V 14 AWG
	Class C	15 Amps @ 150 V 14 AWG
<b>CSA</b>	Class B	20 Amps @ 300 V 14 AWG
	Class C	20 Amps @ 300 V 14 AWG

### #6-32 WIRE CLAMP SCREW

<b>UL</b>	Class B	20 Amps @ 300 V 12 AWG
	Class C	20 Amps @ 150 V 12 AWG
<b>CSA</b>	Class B	25 Amps @ 300 V 12 AWG
	Class C	25 Amps @ 300 V 12 AWG

NOTE: 3.5M screws carry #6-32 screw ratings.

## TECHNICAL SPECIFICATIONS

### ELECTRICAL

DWV	10500 VDC
IR	>5000 Megohms

### MECHANICAL

Tightening torque	12 in.-lbs.
Maximum torque	13 in.-lbs.
Wire strip length	5/16"
Wire range	12 to 24 AWG

### ENVIRONMENTAL

Continuous Use Temp	
RTI electrical	110°C
RTI mechanical w/o impact	110°C

## OPTIONS

-45	Slotted screw
-47	Screws up, wire ready
-49	Brass, phillips/slotted screw
-45-56	Stainless steel screw, slotted
-50	Clamp washer, phillips/slotted screw
-58	No screws, barrier only
-59	Screws supplied unassembled
-C	No mounting ends
-E	Solid mounting ends
-F	Rap-attach mounts
-M	3.5 M screw, slotted
-P	.040" standoff pads
-V	130°C insulator

## AGENCY LISTINGS

<b>UL</b>	File No. E48521
	Guide No. XCFR2
<b>CSA</b>	File No. 025562

## MATERIALS

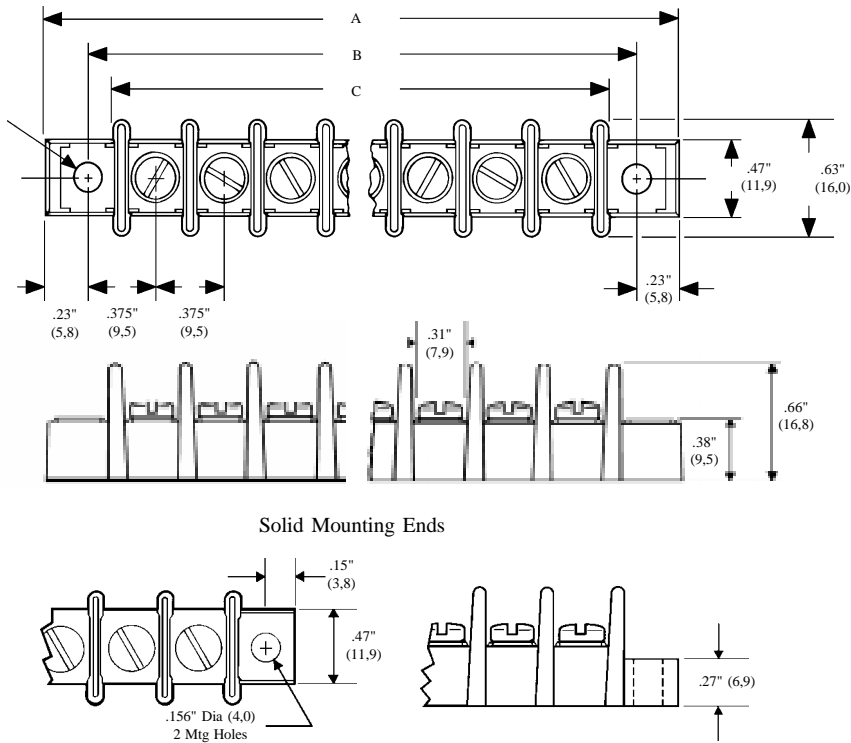
Insulator	Thermoplastic, UL94V-0, black
Terminal	Brass, tin-lead plate
Screws	#6-32, phillips/slotted, steel, zinc chromate plate

## HOW TO ORDER

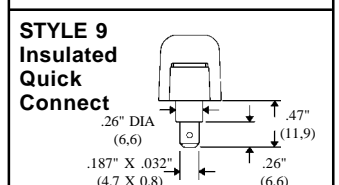
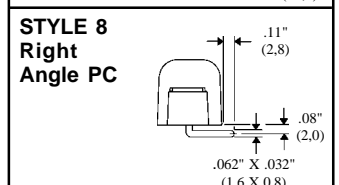
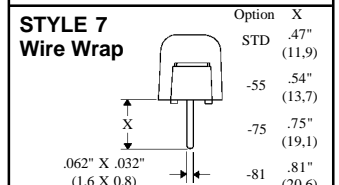
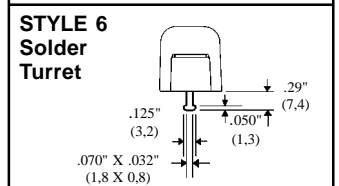
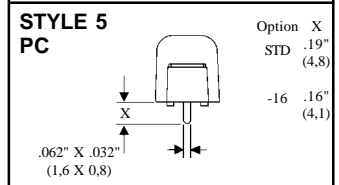
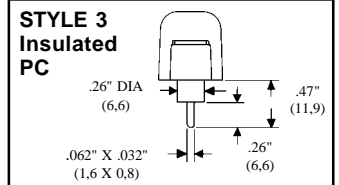
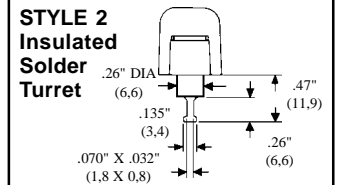
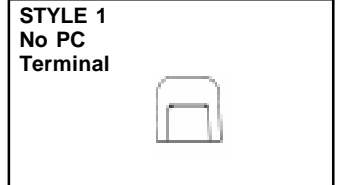
<b>7</b>	<b>2</b>	<b>X</b>	<b>X</b>	<b>X</b>	<b>X</b>
SERIES	TERMINAL STYLE	NO. OF POLES	OPTIONS		
	123	2 to 26	(Dash #s above and opposite page)		
	567		and		
	89		opposite page)		

\*Consult factory for combinations of screw options.

Molex Industrial Division  
 New England Operations  
 Gilford, NH 03246-6600  
 Phone (603) 524-5101  
 Fax (603) 524-1627  
 Internet www.beauint.com



**TERMINAL STYLES**



No. of Circuits	A		B		C	
	in.	mm	in.	mm	in.	mm
2	1.58	78,3	1.13	28,6	.83	21,1
3	1.96	49,7	1.50	38,1	1.21	30,7
4	2.33	59,2	1.88	47,6	1.58	40,2
5	2.71	68,8	2.25	57,2	1.96	49,7
6	3.08	78,3	2.63	66,7	2.33	59,2
7	3.46	87,8	3.00	76,2	2.71	68,8
8	3.83	97,3	3.38	85,7	3.08	78,3
9	4.21	107	3.75	95,3	3.46	87,8
10	4.58	116	4.13	105	3.83	97,3
11	4.96	126	4.50	114	4.21	107
12	5.33	135	4.88	124	4.58	116
13	5.71	145	5.25	133	4.96	126
14	6.08	154	5.63	143	5.33	135
15	6.46	164	6.00	152	5.71	145
16	6.83	174	6.38	162	6.08	154
17	7.21	183	6.75	171	6.46	164
18	7.58	193	7.13	181	6.83	174
19	7.96	202	7.50	191	7.21	183
20	8.33	212	7.88	200	7.58	193
21	8.71	221	8.25	210	7.96	202
22	9.08	231	8.63	219	8.33	212
23	9.46	240	9.00	229	8.71	221
24	9.83	250	9.38	238	9.08	231
25	10.21	259	9.75	248	9.46	240
26	10.58	269	10.13	257	9.83	250

Molex Industrial Division  
New England Operations  
Gilford, NH 03246-6600  
Phone (603) 524-5101  
Fax (603) 524-1627  
Internet www.beuint.com