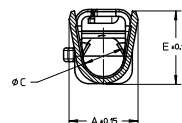
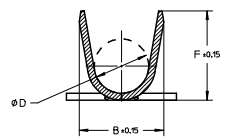


CONDUCTOR CRIMP



SECTION W-W

INSULATION CRIMP



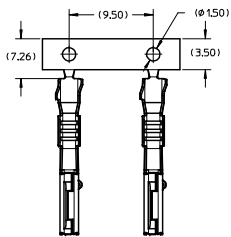
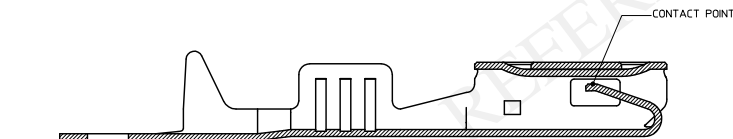
SECTION X-X

NOTES:

1. MATERIAL: COPPER ALLOY (MIN. 1 MICRON HOT DIPPED Sn PREPLATED)
2. PACKAGING: REFER TO PK-36799-001(TO BE DEVELOPED).
3. APPLICATION SPECIFICATION: REFER TO AS-36783-001(TO BE DEVELOPED).
4. PRODUCT SPECIFICATION: REFER TO PS-36783-001/PS-36790-001(TO BE DECIDED).
5. USE WITH 36792/36807

TABLE A

MOLEX P/N	GRIP CODE	METRIC (mm) WIRE SIZE	DIM A	DIM B	DIM ØC	DIM ØD	DIM E	DIM F
367990001	M	0.75-1.00	2.51	3.07	1.50	1.98	2.64	3.25
367990002	S	0.35-0.50	1.91	2.47	1.00	1.54	1.94	2.60



SECTION Y-Y

<p>INITIAL RELEASE EC NO: I2013-0004 DRAWN: PKRISHNAN01 2012/07/05 CHKD: APPR: VUTTARKAR 2012/07/17</p>	QUALITY SYMBOLS	GENERAL TOLERANCES (UNLESS SPECIFIED)	DIMENSION STYLE	SCALE	DESIGN UNITS	THIRD ANGLE PROJECTION
	▽=0	mm INCH	MM ONLY	10:1	METRIC	⊙ □
	▽=0	4 PLACES ± --- ± ---	DRAWN BY DATE			
	▽=0	3 PLACES ± --- ± ---	PKRISHNAN01 2012/07/05			
		2 PLACES ± 0.10 ± ---	CHECKED BY DATE			
		1 PLACE ± 0.20 ± ---	APPROVED BY DATE			
		0 PLACE ± --- ± ---	VUTTARKAR 2012/07/17			
		ANGULAR ±1/2°	MATERIAL NO.			
		DRAFT WHERE APPLICABLE MUST REMAIN WITHIN DIMENSIONS	SEE TABLE A			
			SIZE A			
			THIS DRAWING CONTAINS INFORMATION THAT IS PROPRIETARY TO MOLEX INCORPORATED AND SHOULD NOT BE USED WITHOUT WRITTEN PERMISSION			

MX 120G FEMALE TERMINAL

**molex**

SD-36799-001

SHEET NO. 1 OF 1