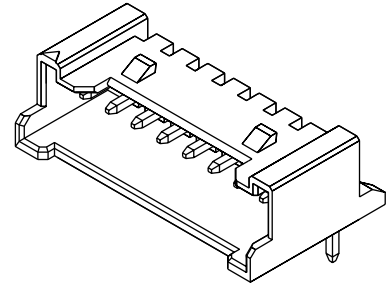


Wire-to-Board
Header

35363
Right Angle



FEATURES AND SPECIFICATIONS

Features and Benefits

- Sizes 2 to 15 and 20 circuits
- Positive locking ribs provide secure mating retention
- Four-wall shroud with guide plate protects pins and facilitates mating
- Compact low-profile design for space savings
- Polarizing end walls prevent mismatching
- Five color choices for circuit identification

Reference Information

Product Specification: PS-35507
Packaging: Bag
UL File No.: E29179
CSA File No.: LR19980
Mates With: 35507 housing
Designed In: Millimeters

Electrical

Voltage: 125V
Current: 2.0A
Contact Resistance: 20mΩ max.
Dielectric Withstanding Voltage: 500V
Insulation Resistance: 1000 MΩ min.

Mechanical

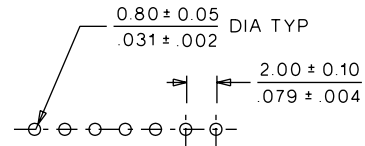
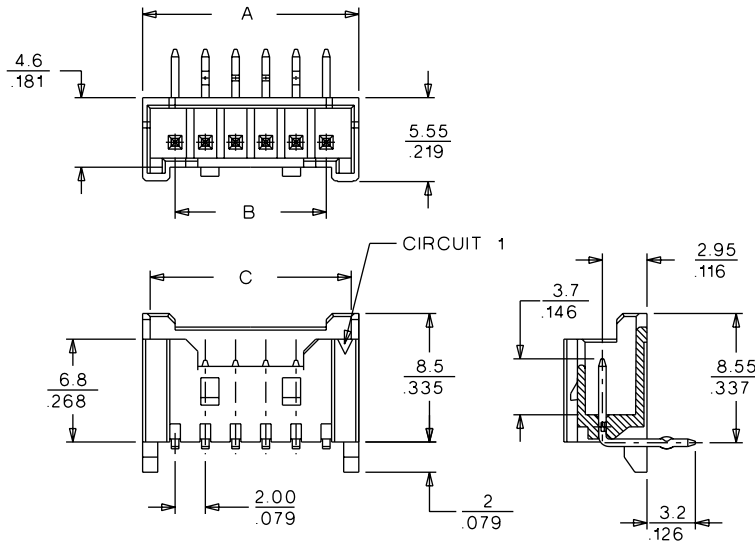
Mating Force: 5 circuits—58.8N (13.2 lb)
Unmating Force: 5 circuits—3.3N (0.7 lb)
Durability: 30 cycles

Physical

Housing: Polyamide, UL 94V-0
Contact: Brass
Plating: Tin/Lead
Operating Temperature: -40 to +105°C

B 2.00 to 2.50mm (.079 to .098") Pitch

CATALOG DRAWING (FOR REFERENCE ONLY)



PCB LAYOUT: COMPONENT SIDE

RECOMMENDED PCB THICKNESS : $\frac{1.60 \pm 0.10}{.063 \pm .004}$

ORDERING INFORMATION AND DIMENSIONS

Circuits	Order No.	Dimension		
		A	B	C
2	35363-0210	7.70 (.303)	2.00 (.079)	5.30 (.209)
3	35363-0310	9.70 (.382)	4.00 (.157)	7.30 (.287)
4	35363-0410	10.30 (.406)	6.00 (.236)	9.30 (.366)
5	35363-0510	12.30 (.484)	8.00 (.315)	11.30 (.445)
6	35363-0610	14.30 (.563)	10.00 (.394)	13.30 (.524)
7	35363-0710	16.30 (.642)	12.00 (.472)	15.30 (.602)
8	35363-0810	18.30 (.720)	14.00 (.551)	17.30 (.681)
9	35363-0910	20.30 (.799)	16.00 (.630)	19.30 (.760)
10	35363-1010	22.30 (.878)	18.00 (.709)	21.30 (.839)
11	35363-1110	24.30 (.957)	20.00 (.787)	23.30 (.917)
12	35363-1210	26.30 (1.035)	22.00 (.866)	25.30 (.996)
13	35363-1310	28.30 (1.114)	24.00 (.945)	27.30 (1.075)
14	35363-1410	30.30 (1.193)	26.00 (1.024)	29.30 (1.154)
15	35363-1510	32.30 (1.271)	28.00 (1.102)	31.30 (1.232)
20	35363-2010	42.30 (1.665)	38.00 (1.496)	41.30 (1.626)