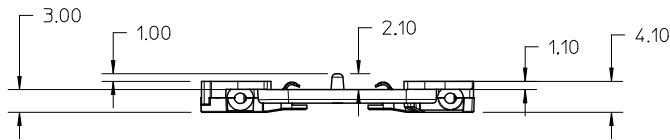


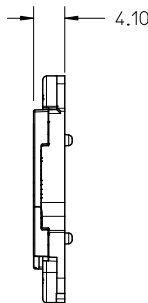
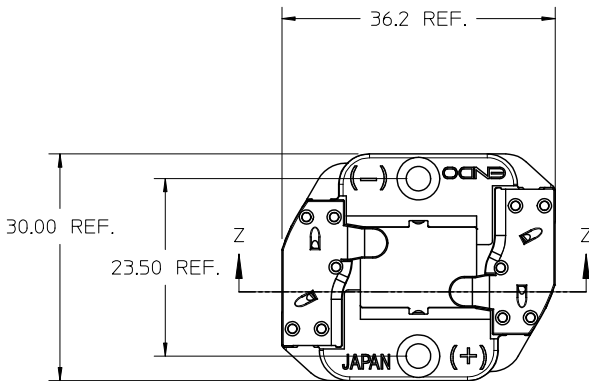
10 9 8 7 6 5 4 3 2 1



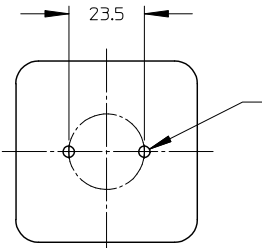
OPENINGS ON WIRE TRAP CAPS FOR VISUAL CONFIRMATION OF CONTACT TO LED PAD



SECTION Z-Z



- NOTES:
- THIS HOLDER WILL ACCEPT THE SHARP MINI ZENIGATA LED
  - MATERIALS:
    - CAPS: NATURAL COLOR PA66 NYLON 25% GF UL94V-0
    - HOUSING: NATURAL COLOR PA66 NYLON 25% GF UL94V-0
  - WIRE TRAP TERMINALS: COPPER ALLOY
    - FINISH: GOLD OVER NICKEL
  - THIS PRODUCT IS ELV AND ROHS COMPLIANT
  - APPLICABLE WIRE GAUGE - 18 OR 20 AWG
    - SOLID WIRE IS RECOMMENDED
    - IF STRANDED WIRE IS USED, PRE-TINNED IS RECOMMENDED
    - 1 cm (+/- 1 mm) STRIP LENGTH IS RECOMMENDED
  - MOUNT HOLDER USING M3 OR 4-40 SCREWS (2), 0.8 NEWTON METERS MAX TORQUE
  - UL RECOGNITION TO UL496 - PENDING  
 c-UL RECOGNITION TO CSA-C22.2 NO. 43 (2008) - PENDING  
 RATED 600V  
 UL FILE NUMBER: PENDING



M3 OR 4-40 TAPPED HOLES (2)  
 TORQUE SCREWS 0.8 NEWTON METERS MAX

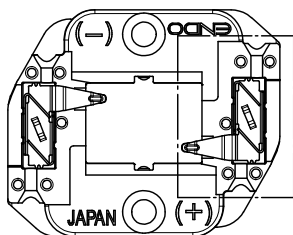
RECOMMENDED MOUNTING DIMENSIONS (NTS)

ENTER DESCRIPTION EC NO: SSL2013-0018 DRAWN: CCARRANZA 2012/08/22 CHKD: CHYKD APPR: DMCGOWAN 2012/08/23	QUALITY SYMBOLS ∇=0 ∇=0 ∇=0	GENERAL TOLERANCES (UNLESS SPECIFIED)		DIMENSION STYLE MM ONLY	SCALE 2:1	DESIGN UNITS METRIC	THIRD ANGLE PROJECTION	
		mm	INCH	DRAWN BY CCARRANZA	DATE 2011/12/27	TITLE SHARP MINI ZENIGATA-ENDO LED HOLDER		
		4 PLACES ± --- ± ---		CHECKED BY	DATE	APPROVED BY DMCGOWAN		
		3 PLACES ± --- ± ---				DATE 2011/12/27	MATERIAL NO. 1803900001	
2 PLACES ± 0.13 ± ---		ANGULAR ± 1/2°		DOCUMENT NO. SD-180390-001		SHEET NO. 1 OF 2		
1 PLACE ± 0.25 ± ---		DRAFT WHERE APPLICABLE MUST REMAIN WITHIN DIMENSIONS		MOLEX INCORPORATED THIS DRAWING CONTAINS INFORMATION THAT IS PROPRIETARY TO MOLEX INCORPORATED AND SHOULD NOT BE USED WITHOUT WRITTEN PERMISSION				

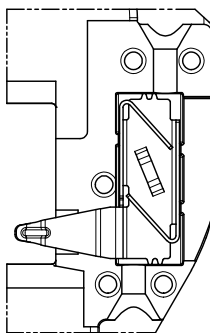
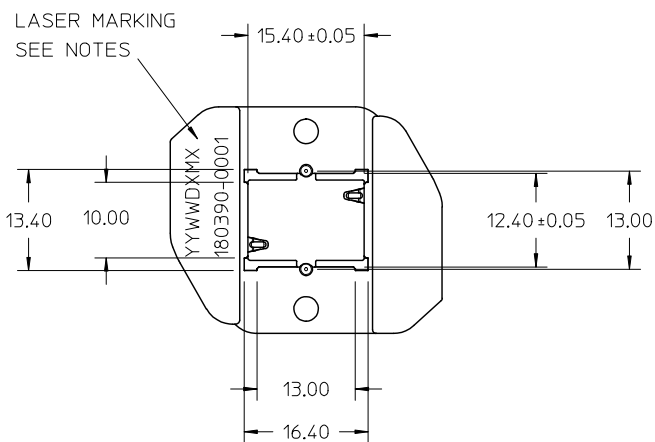
9 8 7 6 5 4 3 2 1

10 9 8 7 6 5 4 3 2 1

NOTE: WIRE TRAP CAPS ARE REMOVED FOR CLARITY



SEE DETAIL 1



VIEW OF TWO-WAY WIRE TRAP

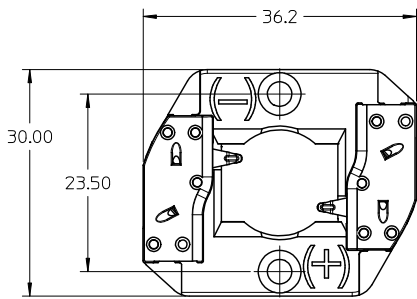
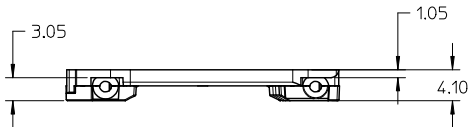
DETAIL 1  
SCALE 4:1

WIRE TRAPS CAN ACCOMMODATE  
18 OR 20 GAUGE WIRE

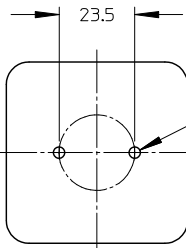
NOTES:

- PART TO BE LASER MARKED WITH 1.6mm MINIMUM TEXT HEIGHT WITH THE FOLLOWING:  
DATE CODE (YYWWD)  
MANUFACTURING PLANT (XM)  
ASSEMBLY DRAWING REVISION (X)  
PART NUMBER

ENTER DESCRIPTION EC NO: SSL2013-0018 DRAWN: CCARRANZA 2012/08/27 CHKD: CHYKO APPR: DMCGOWAN 2012/08/27	QUALITY SYMBOLS ▽=0 ▽=0 ▽=0	GENERAL TOLERANCES (UNLESS SPECIFIED)		DIMENSION STYLE MM ONLY		SCALE 2:1	DESIGN UNITS METRIC	THIRD ANGLE PROJECTION	
		mm	INCH	DRAWN BY CCARRANZA	DATE 2011/12/27	TITLE SHARP MINI ZENIGATA-ENDO LED HOLDER			
J	REV	4 PLACES ± --- ± ---		CHECKED BY	DATE	MATERIAL NO. 1803900001			
		3 PLACES ± --- ± ---		APPROVED BY DMCGOWAN	DATE 2011/12/27				
		2 PLACES ± 0.13 ± ---		DOCUMENT NO. SD-180390-001		SHEET NO. 2 OF 2			
		1 PLACE ± 0.25 ± ---		THIS DRAWING CONTAINS INFORMATION THAT IS PROPRIETARY TO MOLEX INCORPORATED AND SHOULD NOT BE USED WITHOUT WRITTEN PERMISSION					
		ANGULAR ± 1/2°							
		DRAFT WHERE APPLICABLE MUST REMAIN WITHIN DIMENSIONS							



- 1) MATERIALS:
  - a. CAPS: NATURAL COLOR PA66 NYLON 25% GF UL94V-0
  - b. HOUSING: NATURAL COLOR PA66 NYLON 25% GF UL94V-0
- 2) WIRE TRAP TERMINALS: COPPER ALLOY
  - a. FINISH: GOLD OVER NICKEL
- 3) THIS PRODUCT IS ELV AND ROHS COMPLIANT
- 4) APPLICABLE WIRE GAUGE - 18 OR 20 AWG
  - a. SOLID WIRE IS RECOMMENDED
  - b. IF STRANDED WIRE IS USED, PRE-TINNED IS RECOMMENDED
- 5) MOUNT HOLDER USING M3 OR 4-40 SCREWS (2), 0.8 NEWTON METERS MAX TORQUE
- 6) UL RECOGNITION TO UL496 - PENDING  
 c-UL RECOGNITION TO CSA-C22.2 NO. 43 (2008) - PENDING  
 RATED 600V  
 UL FILE NUMBER: PENDING



M3 OR 4-40 TAPPED HOLES (2)  
 TORQUE SCREWS 0.8 NEWTON METERS MAX

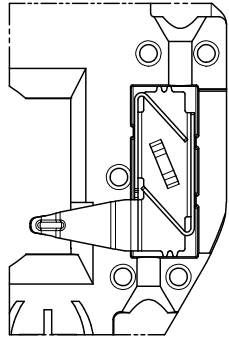
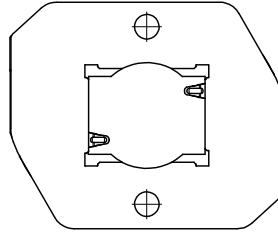
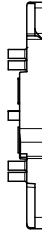
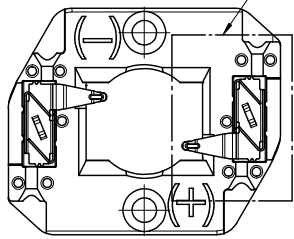
RECOMMENDED MOUNTING DIMENSIONS (NTS)

ENTER DESCRIPTION EC NO: SSL2013-0018 DRAWN: CARRANZA 2012/08/22 CHKD: DMCGOWAN APPR: DMCGOWAN 2012/08/23	QUALITY SYMBOLS	GENERAL TOLERANCES (UNLESS SPECIFIED)	DIMENSION STYLE MM ONLY	SCALE 2:1	DESIGN UNITS METRIC	THIRD ANGLE PROJECTION
	▽=0	mm INCH	DRAWN BY MDEVITO	DATE 2012/02/03	TITLE SHARP MINI ZENIGATA	
	▽=0	4 PLACES ± --- ± ---	CHECKED BY	DATE	APPROVED BY DMCGOWAN	
	▽=0	3 PLACES ± --- ± ---	DATE 2012/02/07		MATERIAL NO. 1803900002	
		2 PLACES ± 0.13 ± ---	DOCUMENT NO. SD-180390-002		SHEET NO. 1 OF 2	
		1 PLACE ± 0.25 ± ---	THIS DRAWING CONTAINS INFORMATION THAT IS PROPRIETARY TO MOLEX INCORPORATED AND SHOULD NOT BE USED WITHOUT WRITTEN PERMISSION			
		ANGULAR ± 1/2°				
		DRAFT WHERE APPLICABLE MUST REMAIN WITHIN DIMENSIONS				

10 9 8 7 6 5 4 3 2 1

NOTE: WIRE TRAP CAPS ARE REMOVED FOR CLARITY

SEE DETAIL A



VIEW OF TWO-WAY WIRE TRAP  
 WIRE TRAPS CAN ACCOMMODATE  
 18 OR 20 GAUGE WIRE

DETAIL A  
 Scale 4:1

ENTER DESCRIPTION EC NO: SSL2013-0018 DRAWN BY: CARRANZA CHKD: DMCGOWAN APPR: DMCGOWAN 2012/08/22 2012/08/23	QUALITY SYMBOLS ∇=0 ∇=0 ∇=0	GENERAL TOLERANCES (UNLESS SPECIFIED)		DIMENSION STYLE MM ONLY	SCALE 2:1	DESIGN UNITS METRIC	THIRD ANGLE PROJECTION	
		4 PLACES ± --- ± ---	mm INCH	DRAWN BY MDEVITO	DATE 2012/02/03	TITLE SHARP MINI ZENIGATA		
		3 PLACES ± --- ± ---		CHECKED BY	DATE			
		2 PLACES ± 0.13 ± ---		APPROVED BY DMCGOWAN	DATE 2012/02/07	MOLEX INCORPORATED		
		1 PLACE ± 0.25 ± ---	ANGULAR ± 1/2°	MATERIAL NO. 1803900002	DOCUMENT NO. SD-180390-002	SHEET NO. 2 OF 2		
DRAFT WHERE APPLICABLE MUST REMAIN WITHIN DIMENSIONS				SIZE B	THIS DRAWING CONTAINS INFORMATION THAT IS PROPRIETARY TO MOLEX INCORPORATED AND SHOULD NOT BE USED WITHOUT WRITTEN PERMISSION			

lb\_frame\_B\_P\_AM\_T  
 Rev. F 2009/06/18

9 8 7 6 5 4 3 2 1