



**Molex LED Array Holders simplify the installation process for small-fixture applications for OEMs using Sharp\* Mega and Mini Zenigata arrays to reduce installation time with compression contacts that eliminate hand soldering**

LED technology has been proven to reduce the amount of energy consumed and is becoming a more reliable, efficient and user-friendly way for accommodating general illumination requirements. Using unmatched interconnect technology, Molex provides a solderless solution to mounting LED arrays into OEM designs. The holders allow customers to install LED arrays quickly into fixtures, enable field replacements and facilitate upgrades to current applications.

**Features and Benefits**

Compression contacts deliver power to array	Stable connection in high-ambient temperature. Simplifies the LED installation process by eliminating hand soldering or expensive Surface Mount Technology (SMT) equipment. Reduces installation time
Double-ended wire-trap terminal to attach power source	Allows for wiring serial or parallel LED sequences, ensuring ease of array assembly
Screw-mount attachment method for securing array to heat sink	Provides voltage isolation between LED and heat sink with external mounting holes
Releasable wire trap for rework or replacement	Allows for field serviceability
High-temperature thermoplastic housing	Supports high heat-generating environments
Overall form factor is less than 50.00mm in diameter for Mega Zenigata (COB) arrays and 30.00 by 36.20mm for Mini Zenigata (COB) arrays	Ideal for lamp and small-fixture applications
Optional Zhaga cover for Mega Zenigata array only	Provides Zhaga compliant landing interface for optical

**Specifications**

**Reference Information**

Packaging: Tray  
UL File No.: Pending  
CSA File No.: Pending  
Designed In: Millimeters  
RoHS: Yes  
REACH: Yes

**Electrical**

Voltage (max.): 300V DC  
Current (max.):  
Mega Zenigata – 2.5A continuous;  
3.5A max.  
Mini Zenigata – 3.0A continuous; 4.0

Contact Resistance:  
20 milliohms max.  
Dielectric Withstanding Voltage:  
300V DC  
Insulation Resistance:  
5000 milliohms min.

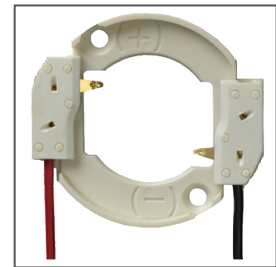
**Mechanical**

Wire Insertion Force:  
5N (1.12 lbf) max.  
Wire Pull Out Force:  
25N (5.62 lbf) max.  
Durability (min.):  
Mega Zenigata – 5 Cycles  
Mini Zenigata – 20 Cycles

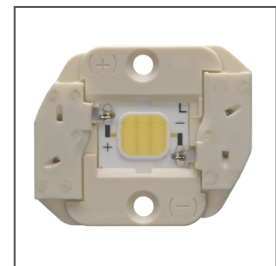
**LED Array Holder for Sharp\* Mega Zenigata (COB) and Sharp Mini Zenigata (COB) Arrays**

**180330** Mega Zenigata (COB) Array

**180390** Mini Zenigata (COB) Array



LED Array Holder for Mega Zenigata (COB) Array



LED Array Holder for Mini Zenigata (COB) Array

**Physical**

Housing: PA66 Nylon GF  
Contact:  
Copper (Cu), Nickel (Ni) and Silver (Ag)  
Plating:  
Contact Area — Select Gold (Au)  
Solder Tail Area — Silver (Ag)  
Underplating — Nickel (Ni)

\*Sharp is a registered trademark of Sharp Electronics Corporation

## Applications

All general illumination applications

- Downlighting
- Track
- Pendants
- Linear

Area Lighting

- Roadways
- Parking Lots
- Wall Packs

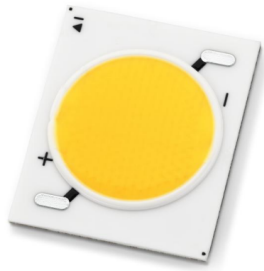


## LED Array Holder for Sharp\* Mega Zenigata (COB) and Sharp Mini Zenigata (COB) Arrays

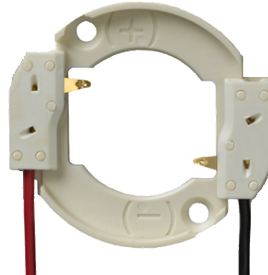


Recessed down-lighting in residential and commercial buildings

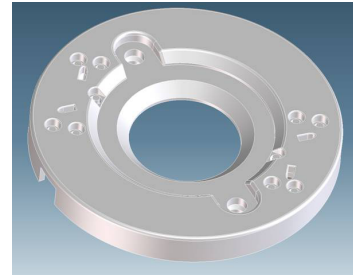
### LED Array Holder for Sharp Mega Zenigata



Sharp Mega Zenigata Array

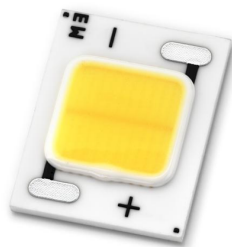


LED Array Holder for Sharp Mega Zenigata (180330-0002)

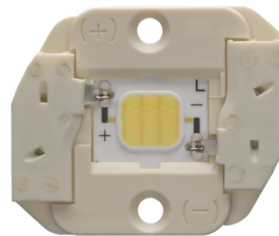


LED Array Holder for Sharp Mega Zenigata Array with Zhaga compliant cover (180330-0003)

### LED Array Holder for Sharp Mini Zenigata



Sharp Mini Zenigata Array



LED Array Holder for Sharp Mini Zenigata (180390-0002)

## Ordering Information

Order No. Sharp Mega	Component	Plating	Zhaga Cover
180330-0002	Mega Zenigata	Gold (Au)	No
180330-0003			Yes
180390-0002	Mini Zenigata		No

\*Sharp is a registered trademark of Sharp Electronics Corporation

[www.molex.com/link/sharp.html](http://www.molex.com/link/sharp.html)  
[www.molex.com/industry/solidstatelighting.html](http://www.molex.com/industry/solidstatelighting.html)