

14 CIRCUIT SHOWN FOR ILLUSTRATION ONLY.

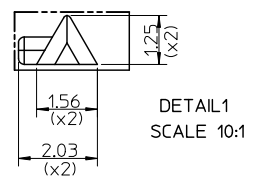
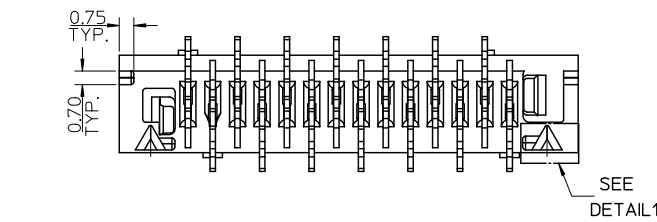
PART NO.	NUMBER OF CKTS	DIMN.	DIMN.	DIMN.	DIMN.	NOTE 7
		A	B	C	D	
90816-***04	4	10.86	3.81	6.11	7.66	
90816-***06	6	13.40	6.35	8.65	10.20	
90816-***08	8	15.94	8.89	11.19	12.74	
90816-***10	10	18.48	11.43	13.73	15.28	
90816-***12	12	21.02	13.97	16.27	17.82	
90816-***14	14	23.56	16.51	18.81	20.36	
90816-***16	16	26.10	19.05	21.35	22.90	
90816-***18	18	28.64	21.59	23.89	25.44	
90816-***20	20	31.18	24.13	26.43	27.98	
90816-***22	22	33.72	26.67	28.97	30.52	
90816-***24	24	36.26	29.21	31.51	33.06	
90816-***26	26	38.80	31.75	34.05	35.60	

90816 - \* \* \* \*

CIRCUIT SIZE.	PCB PEGS		TUBE		TAPE & REEL	
	YES	NO	YES	NO	YES	NO
0	YES	YES	YES	NO	NO	NO
2	YES	NO	NO	YES	YES	NO
3	NO	YES	NO	NO	NO	YES
5	NO	NO	NO	YES	NO	NO

0 = TIN VERSION  
3 = GOLD VERSION

- NOTES:
- 1- MATERIAL HOUSING: PPA, GLASS-FILLED, COLOUR: BLACK TERMINAL: BRASS
  - 2- FINISHES: TERMINAL GOLD: CONTACT AREA: SELECTIVE GOLD, 0.76 MICRONS MINIMUM, SMT TAILS: GOLD FLASH, 0.10 MICRONS GOLD FLASH OVER NICKEL UNDERPLATE. TIN: 3 MICRONS MINIMUM OVER NICKEL UNDERPLATE.
  - 3- PRODUCT SPECIFICATION: PS-99020-0011
  - 4- PACKAGING SPECIFICATION: FOR TAPE AND REEL SEE: PK-90816-006 FOR TUBE SEE: PK-90816-007
  - 5- MATES WITH MOLEX 90327 PART SERIES.
  - 6- ALL SMT TAILS TO LIE WITHIN A COPLANARITY BAND OF 0 - 0.10 MICROMETER REF. FROM EACH OTHER.
  - 7- 4 CIRCUIT PART NOT AVAILABLE IN TAPE AND REEL.



ADDED NOTE 7  
EC NO: E2009-0207  
DRAWN: D.BYRNES 2008/11/10  
CHKD: 2008/11/10  
APPR: J.WALLACE 2008/11/11

QUALITY SYMBOLS	GENERAL TOLERANCES (UNLESS SPECIFIED)		DIMENSION STYLE MM ONLY	
	mm	INCH	DRAWN BY	DATE
▽=0	4 PLACES ± ---	± ---	D. BYRNES	2008/08/16
▽=0	3 PLACES ± ---	± ---	CHECKED BY	DATE
	2 PLACES ± 0.25	± ---	J.WALLACE	2008/08/26
	1 PLACE ± 0.35	± ---	APPROVED BY	DATE
	ANGULAR ± 2 °		J.WALLACE	2008/08/27

SCALE 5:1	DESIGN UNITS METRIC	THIRD ANGLE PROJECTION
TITLE: PICO FLEX SMT LATCHED HEADER		
MOLEX INCORPORATED		
MATERIAL NO. SEE CHART	DOCUMENT NO. SD-90816-001	SHEET NO. 1 OF 2

