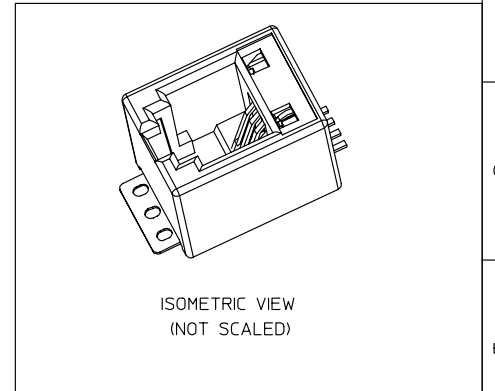
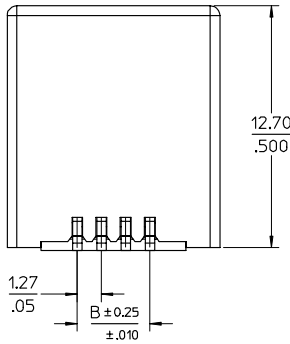


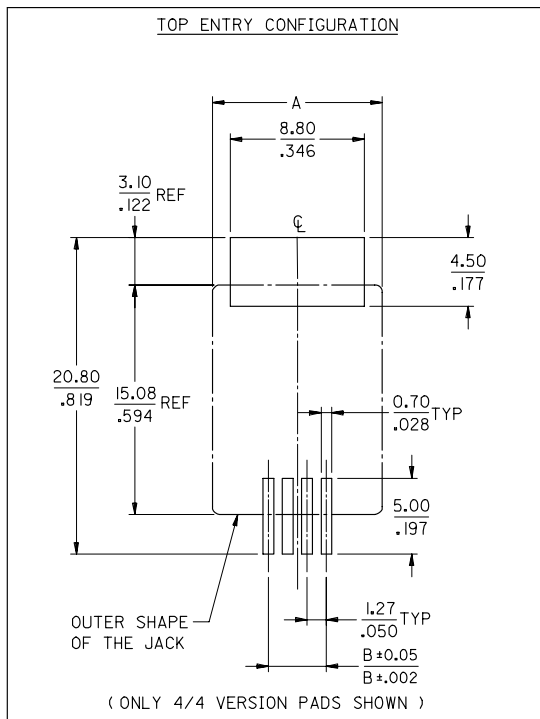
NOTES:

- 1- MATERIAL:
 - HOUSING:LCP GLASS FILLED UL 94-V0, COLOUR BLACK,
 - TERMINAL: BRASS PLATED WITH: 0.00127/.000050 MIN GOLD IN CONTACT AREA, 0.00190/.000075 MIN PURE TIN IN TAIL AREA, BOTH OVER 0.00127/.000050 MIN NICKEL OVERALL.
- 2- JACK FOR MATING WITH F.C.C.68 PLUGS (MOLEX 90075 SERIES).
- 3- PRODUCT SPECIFICATION: PS-85513-002.
- 4- PACKAGING SPECIFICATION (SEE CHART SHEET2):
 - PK-85513-001 SHEET 3 (BLISTER ON REEL 13')
 - PK-85513-001 SHEET 1 (BLISTER ON REEL 15')
 - PK-85513-001 SHEET 2 (BLISTER ON REEL 22')
- 5- FLAT SURFACE ON BOTH SIDES FOR PICK AND PLACE PURPOSE
- 6- COPLANARITY OF LEADS AND TABS: 0.10/.004 MAX
- 7- SEE RECOMMENDED PCB LAYOUT ON SHEET 2
- 8- FOR DRAWING PURPOSE, ONLY 4/4 VERSION SHOWN.
- 9- MANUFACTURING I.D CAN BE EITHER MXF,MG OR MXI.
- 10- APPLICATION SPEC AS-85513-001



| MODIFIED MATERIAL. EC NO: E2007-0716 DRW:DBYRNES 2007/02/15 CHKD: CHIKO 2007/02/15 APPR:EOMAHONY 2007/02/15 DESCRIPTION | QUALITY SYMBOLS | GENERAL TOLERANCES (UNLESS SPECIFIED) | DIMENSION STYLE | SCALE | DESIGN UNITS | THIRD ANGLE PROJECTION | | | | | | | | | | | | | | | | | | |
|--|--|---|---|-------|---|------------------------|--------|---------|----------|--------|---------|----------|--------|--------|---------|--------|--------|---------------|--|--|-------|-----|--------|--|
| | $\nabla=0$ $\nabla=0$ | <table border="1"> <thead> <tr> <th></th> <th>mm</th> <th>INCH</th> </tr> </thead> <tbody> <tr> <td>4 PLACES</td> <td>± .006</td> <td>± .0002</td> </tr> <tr> <td>3 PLACES</td> <td>± .008</td> <td>± .0003</td> </tr> <tr> <td>2 PLACES</td> <td>± 0.15</td> <td>± .010</td> </tr> <tr> <td>1 PLACE</td> <td>± 0.25</td> <td>± .010</td> </tr> <tr> <td colspan="3">ANGULAR ± 2 °</td> </tr> </tbody> </table> | | mm | INCH | 4 PLACES | ± .006 | ± .0002 | 3 PLACES | ± .008 | ± .0003 | 2 PLACES | ± 0.15 | ± .010 | 1 PLACE | ± 0.25 | ± .010 | ANGULAR ± 2 ° | | | MM/IN | 5:1 | METRIC | |
| | | mm | INCH | | | | | | | | | | | | | | | | | | | | | |
| | 4 PLACES | ± .006 | ± .0002 | | | | | | | | | | | | | | | | | | | | | |
| 3 PLACES | ± .008 | ± .0003 | | | | | | | | | | | | | | | | | | | | | | |
| 2 PLACES | ± 0.15 | ± .010 | | | | | | | | | | | | | | | | | | | | | | |
| 1 PLACE | ± 0.25 | ± .010 | | | | | | | | | | | | | | | | | | | | | | |
| ANGULAR ± 2 ° | | | | | | | | | | | | | | | | | | | | | | | | |
| | DRAWN BY | DATE | TITLE | | | | | | | | | | | | | | | | | | | | | |
| | DBYRNES | 2006/08/17 | LOW PROFILE TOP ENTRY TRUE SMT JACK WITH P&P SURFACE(SHORT VERSION) | | | | | | | | | | | | | | | | | | | | | |
| | CHECKED BY | DATE | MOLEX MOLEX INCORPORATED | | | | | | | | | | | | | | | | | | | | | |
| | EOMAHONY | 2006/08/17 | | | | | | | | | | | | | | | | | | | | | | |
| | APPROVED BY | DATE | | | | | | | | | | | | | | | | | | | | | | |
| | EOMAHONY | 2006/08/17 | | | | | | | | | | | | | | | | | | | | | | |
| | MATERIAL NO. | DOCUMENT NO. | SHEET NO. | | | | | | | | | | | | | | | | | | | | | |
| | | | 1 OF 2 | | | | | | | | | | | | | | | | | | | | | |
| | DRAFT WHERE APPLICABLE MUST REMAIN WITHIN DIMENSIONS | | SEE CHART | | SD-85513-010 | | | | | | | | | | | | | | | | | | | |
| | | | SIZE A3 | | THIS DRAWING CONTAINS INFORMATION THAT IS PROPRIETARY TO MOLEX INCORPORATED AND SHOULD NOT BE USED WITHOUT WRITTEN PERMISSION | | | | | | | | | | | | | | | | | | | |

RECOMMENDED PCB LAYOUTS
(SEE FROM COMPONENT SIDE)



| PART. NO. | HOUSING SIZE | LOADED CKTS | TOOLED | A | B | PACKAGING | PACKAGING SPEC. |
|------------|--------------|-------------|--------|---------------|--------------|---------------------|----------------------|
| 85513-5013 | | | YES | | | BLISTER ON REEL 13* | PK-85513-001 SHEET 3 |
| 85513-5001 | 8 | 8 | YES | 15.24 .600 | 8.89 .350 | BLISTER ON REEL 15* | PK-85513-001 SHEET 1 |
| 85513-5009 | | | YES | | | BLISTER ON REEL 22* | PK-85513-001 SHEET 2 |
| 85513-5014 | | | YES | | | BLISTER ON REEL 13* | PK-85513-001 SHEET 3 |
| 85513-5002 | 6 | 6 | YES | 13.21 .520 | 6.35 .250 | BLISTER ON REEL 15* | PK-85513-001 SHEET 1 |
| 85513-5010 | | | YES | | | BLISTER ON REEL 22* | PK-85513-001 SHEET 2 |
| 85513-5015 | | | YES | | | BLISTER ON REEL 13* | PK-85513-001 SHEET 3 |
| 85513-5003 | 6 | 4 | YES | 13.21 .520 | 3.81 .150 | BLISTER ON REEL 15* | PK-85513-001 SHEET 1 |
| 85513-5011 | | | YES | | | BLISTER ON REEL 22* | PK-85513-001 SHEET 2 |
| 85513-5016 | | | YES | | | BLISTER ON REEL 13* | PK-85513-001 SHEET 3 |
| 85513-5004 | 4 | 4 | YES | 11.18 .440 | 3.81 .150 | BLISTER ON REEL 15* | PK-85513-001 SHEET 1 |
| 85513-5012 | | | YES | | | BLISTER ON REEL 22* | PK-85513-001 SHEET 2 |

| SEE SHEET 1 EC NO: E2007-0716 DRAWN BY: DBYRNES CHKD: CHIKO APPR: EOMAHONY | DESCRIPTION 2007/02/15 2007/02/15 2007/02/15 | QUALITY SYMBOLS | GENERAL TOLERANCES (UNLESS SPECIFIED) | DIMENSION STYLE | SCALE | DESIGN UNITS | THIRD ANGLE PROJECTION | | | | | | | | | | | | | | | | | |
|--|---|--|---|---|--------------|------------------|------------------------|--------|---------|----------|--------|---------|----------|--------|--------|---------|--------|--------|---------------|--|--|-------|-----|--------|
| | | $\nabla=0$ $\sphericalangle=0$ | <table border="1"> <tr> <th></th> <th>MM</th> <th>INCH</th> </tr> <tr> <td>4 PLACES</td> <td>± .005</td> <td>± .0004</td> </tr> <tr> <td>3 PLACES</td> <td>± .006</td> <td>± .0005</td> </tr> <tr> <td>2 PLACES</td> <td>± 0.15</td> <td>± .010</td> </tr> <tr> <td>1 PLACE</td> <td>± 0.25</td> <td>± .010</td> </tr> <tr> <td colspan="3">ANGULAR ± 2 °</td> </tr> </table> | | MM | INCH | 4 PLACES | ± .005 | ± .0004 | 3 PLACES | ± .006 | ± .0005 | 2 PLACES | ± 0.15 | ± .010 | 1 PLACE | ± 0.25 | ± .010 | ANGULAR ± 2 ° | | | MM/IN | 1:1 | METRIC |
| | MM | INCH | | | | | | | | | | | | | | | | | | | | | | |
| 4 PLACES | ± .005 | ± .0004 | | | | | | | | | | | | | | | | | | | | | | |
| 3 PLACES | ± .006 | ± .0005 | | | | | | | | | | | | | | | | | | | | | | |
| 2 PLACES | ± 0.15 | ± .010 | | | | | | | | | | | | | | | | | | | | | | |
| 1 PLACE | ± 0.25 | ± .010 | | | | | | | | | | | | | | | | | | | | | | |
| ANGULAR ± 2 ° | | | | | | | | | | | | | | | | | | | | | | | | |
| | | DRAFT WHERE APPLICABLE MUST REMAIN WITHIN DIMENSIONS | SEE CHART | MATERIAL NO. | DOCUMENT NO. | SHEET NO. 2 OF 2 | | | | | | | | | | | | | | | | | | |
| | | | | THIS DRAWING CONTAINS INFORMATION THAT IS PROPRIETARY TO MOLEX INCORPORATED AND SHOULD NOT BE USED WITHOUT WRITTEN PERMISSION | | | | | | | | | | | | | | | | | | | | |