

Turned contacts turned crimp male contact for wire gauge 20 - 16

Part No. VN 01 016 0026 (1)C



Series Contacts

Subseries Contact Turned contacts

#### COMMON CHARACTERISTICS

Wire gauge from		0,75
Wire gauge to		1,0
Wire gauge (AWG) from		20
Wire gauge (AWG) to		16
Packaging / supplied as		Single contact
No. of pieces		100
Sex of Contact		Pin
Type of contact		Turned crimp contact

#### CLIMATICAL CHARACTERISTICS

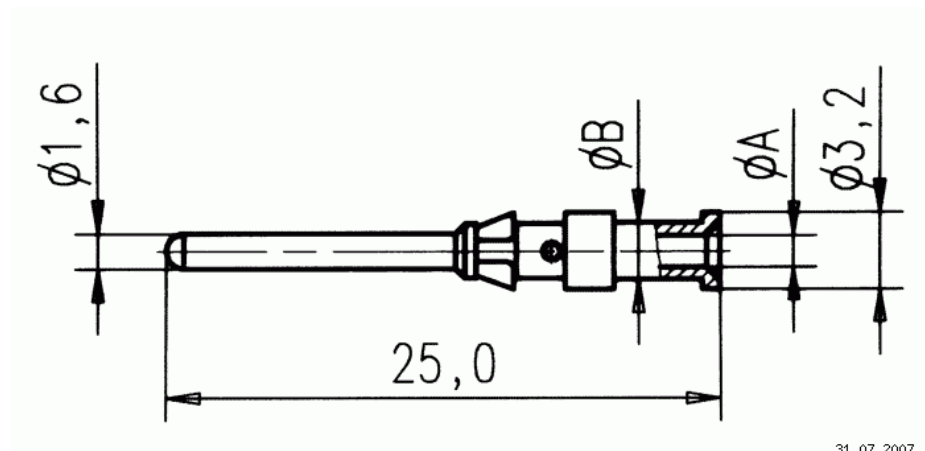
Upper temperature		+ 125 °C
Lower temperatur		- 40 °C

Turned contacts turned crimp male contact for wire gauge 20 - 16

Part No. VN 01 016 0026 (1)C

Series Contacts

Subseries Contact Turned contacts



Ma zeichnung Dimensions in mm (Inch)

31.07.2007